

LIGHTING FEATURES IN JAPANESE TRADITIONAL ARCHITECTURE

Cabeza-Lainez J.M, Saiki T., Almodovar-Melendo J.M., Jiménez-Verdejo J.R.

1. Introduction.

2. Vernacular examples:

- Shôji: latticed paper-windows.

- Noki: overhangs.

- Engawa: verandas oriented to the South

3. Temples.

- Karesansui: void spaces treated like a pond filled with rocks and gravel.

4. Modern evolution

- Bruno Taut.

- The Raymonds.

5. Conclusion.

INTRODUCTION





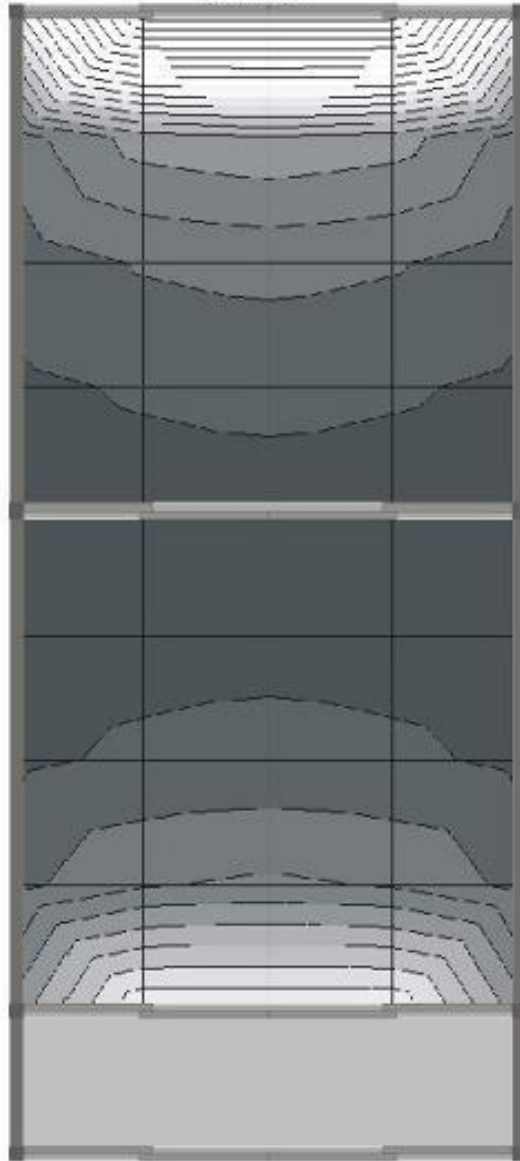
VERNACULAR EXAMPLES



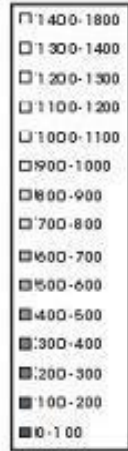
8 8 '98

KOBE - DECEMBER 12H - CLEAR+ SUN
WITH EAVES

NORTH

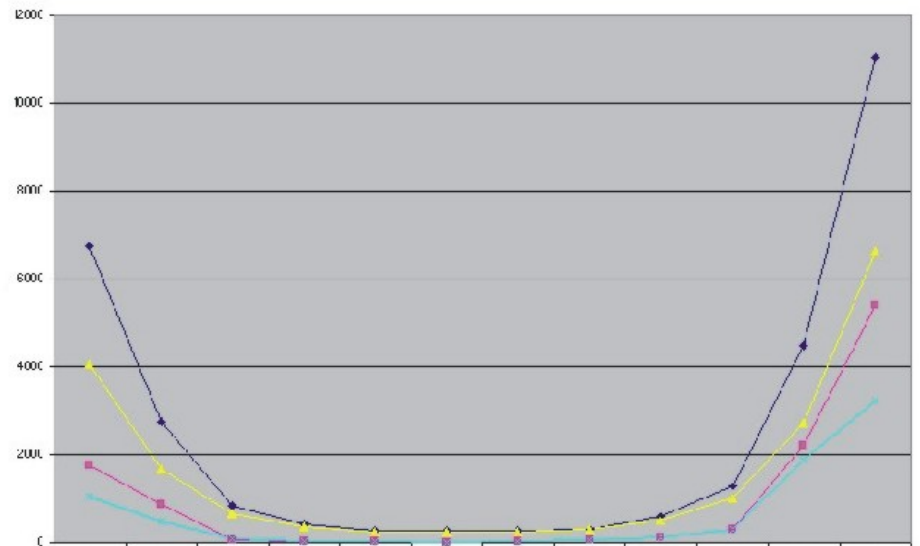


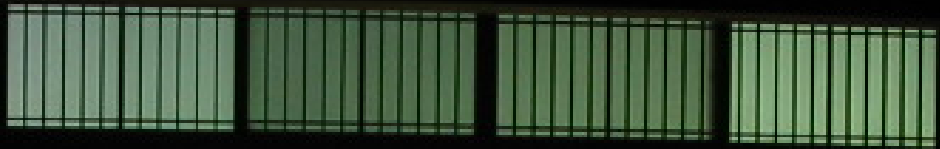
LUX



CLEAR+ SUN 12H

- ◆ JUNE WITHOUT EAVES
- ◆ DECEMBER WITHOUT EAVES
- ◆ JUNE WITH EAVES
- ◆ DECEMBER WITH EAVES

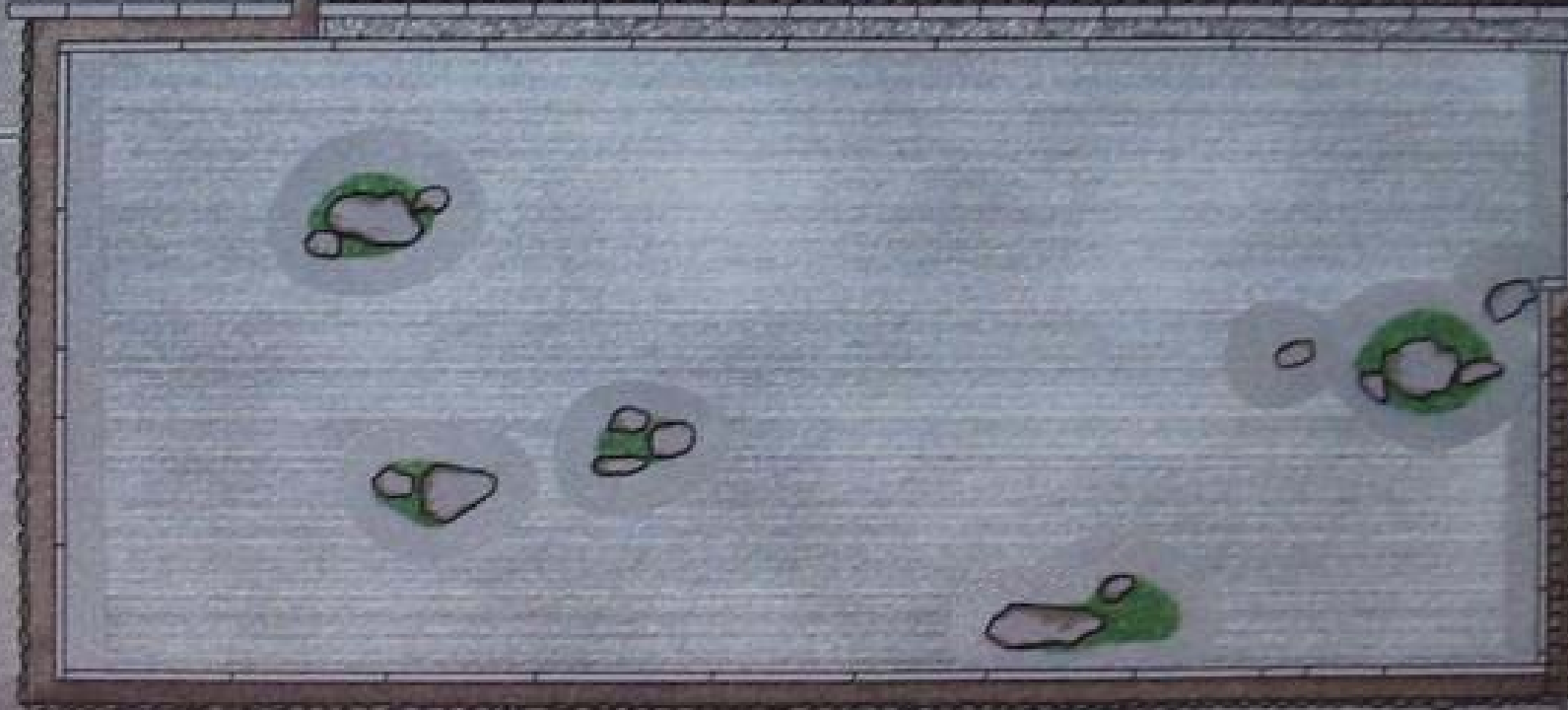




TEMPLES

龍安寺石庭

方丈



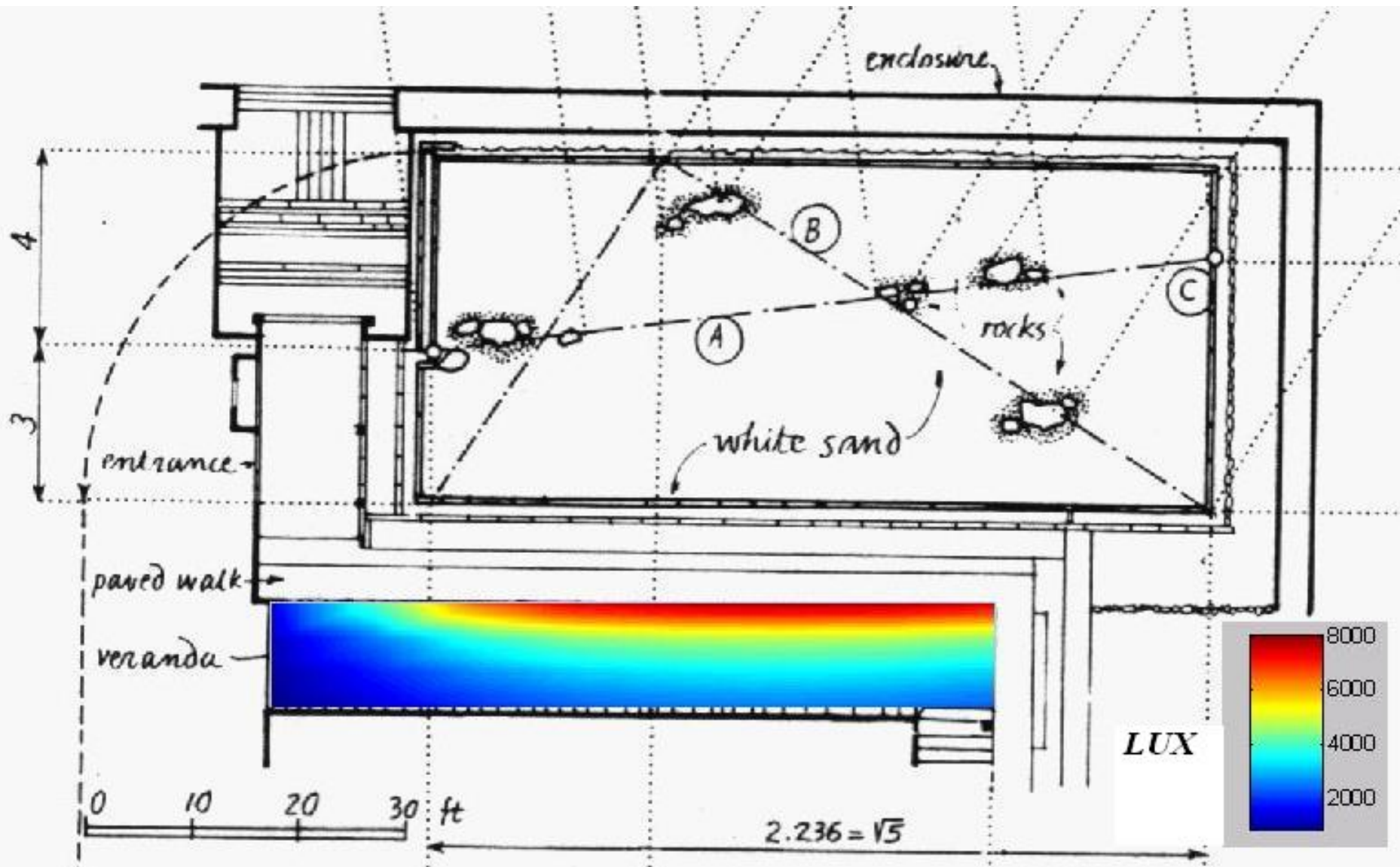
築地塀

イラスト/蓬生雄









MODERN EVOLUTION





S.L.
Isaburo Ueno

Drummond Park

28.

10.

36

Manchester

BT

S.L.
Isaburo Ueno

Drummond Park

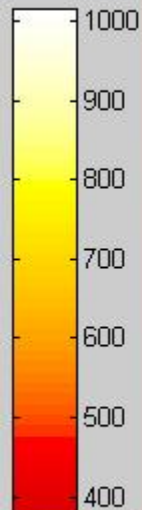
28.

10.

36

Manchester

LUX



S.L.
Isaburo Ueno

Drummond Park

28.

10.

36

Manchester

BT

S.L.
Isaburo Ueno

Drummond Park

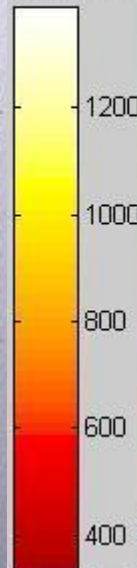
28.

10.

36

Manchester

LUX



1200

1000

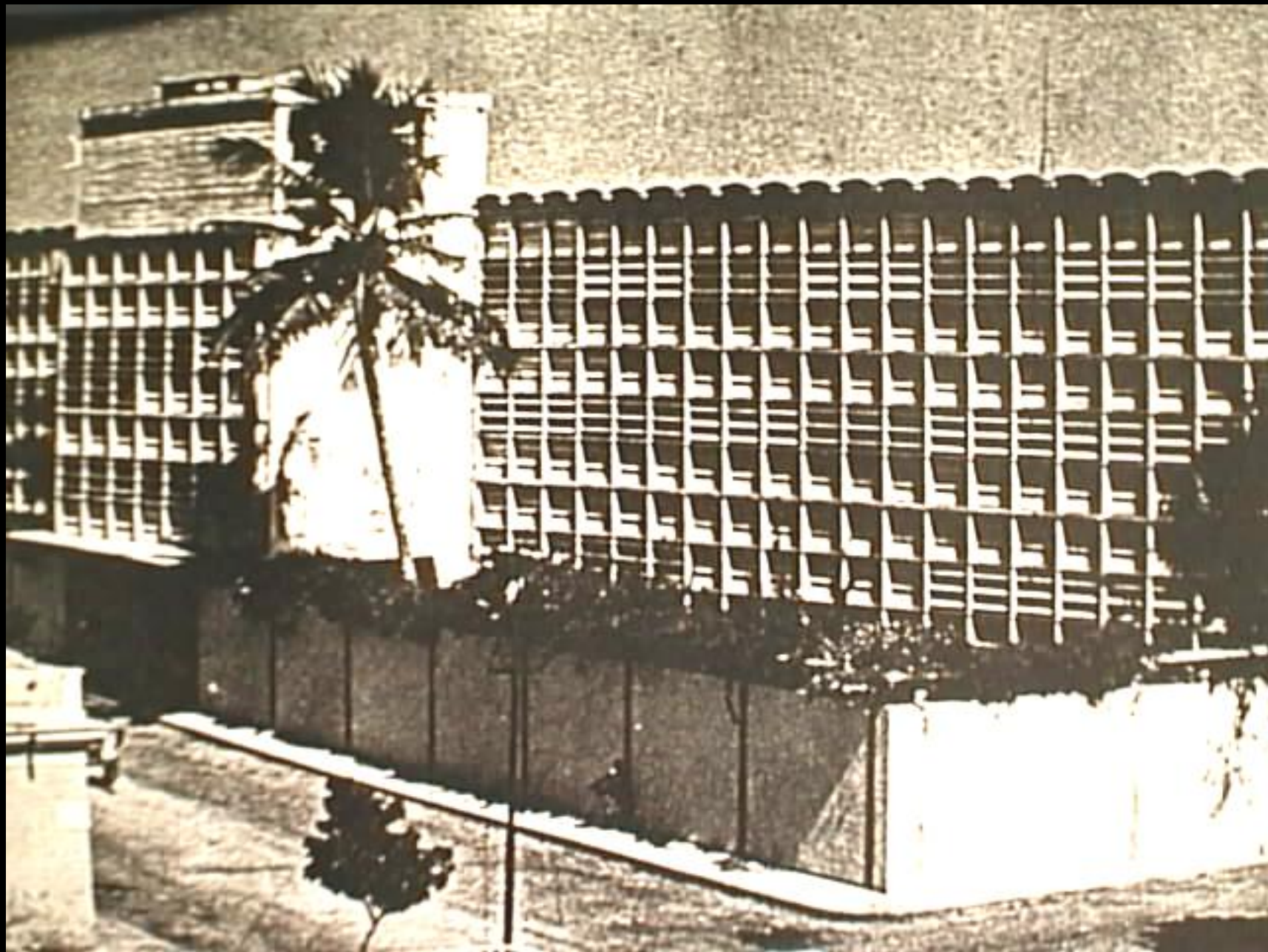
800

600

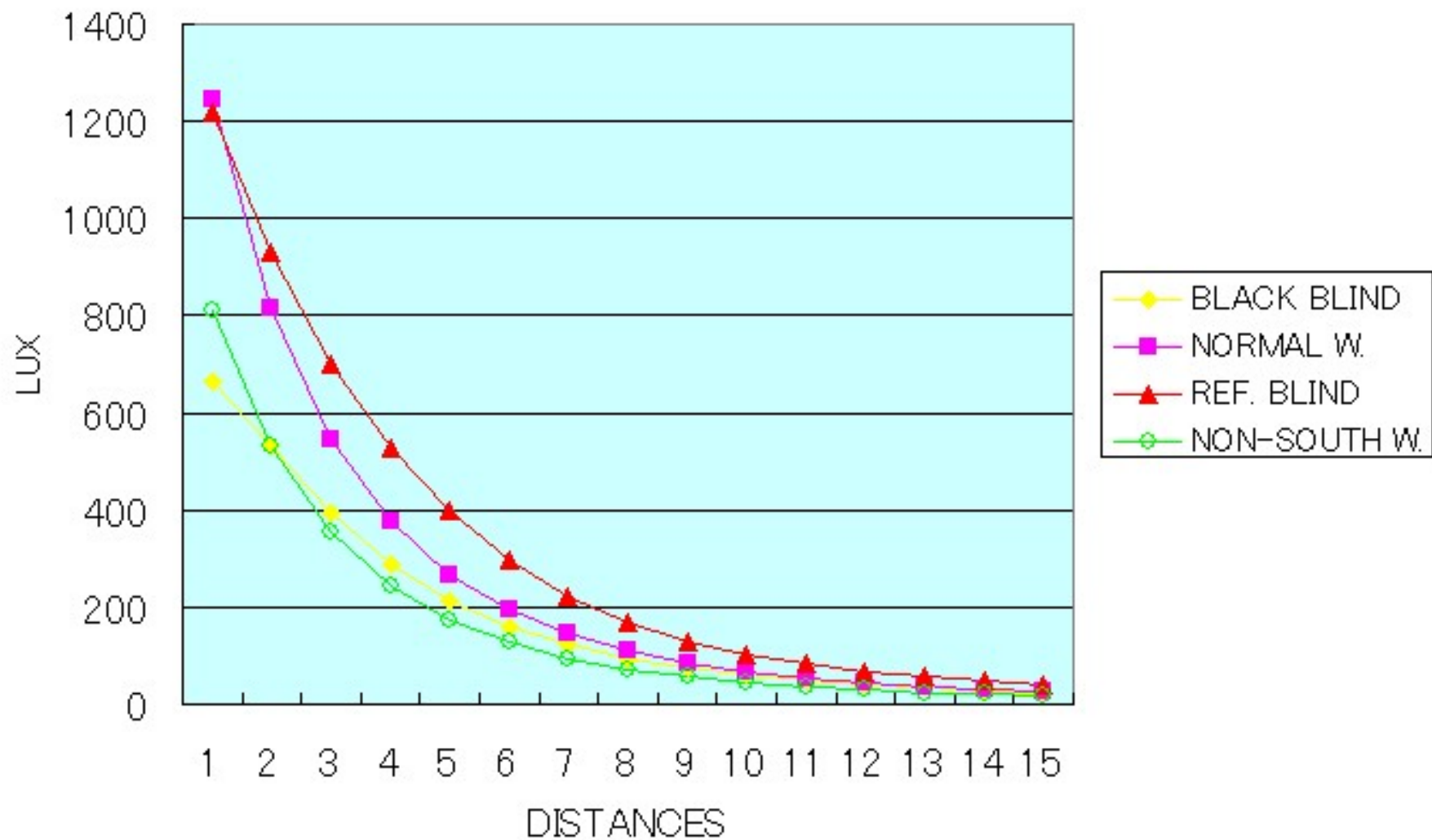
400







22 MARCH 12H 3M. BLIND COMPARISON



CONCLUSION



盟

Alliance

Chinese Meng, Japanese Mei