



Ecole polytechnique fédérale de Lausanne

Gender Dimension in Research Proposals: the role of EPFL's Research Office

Caroline Vandevyver



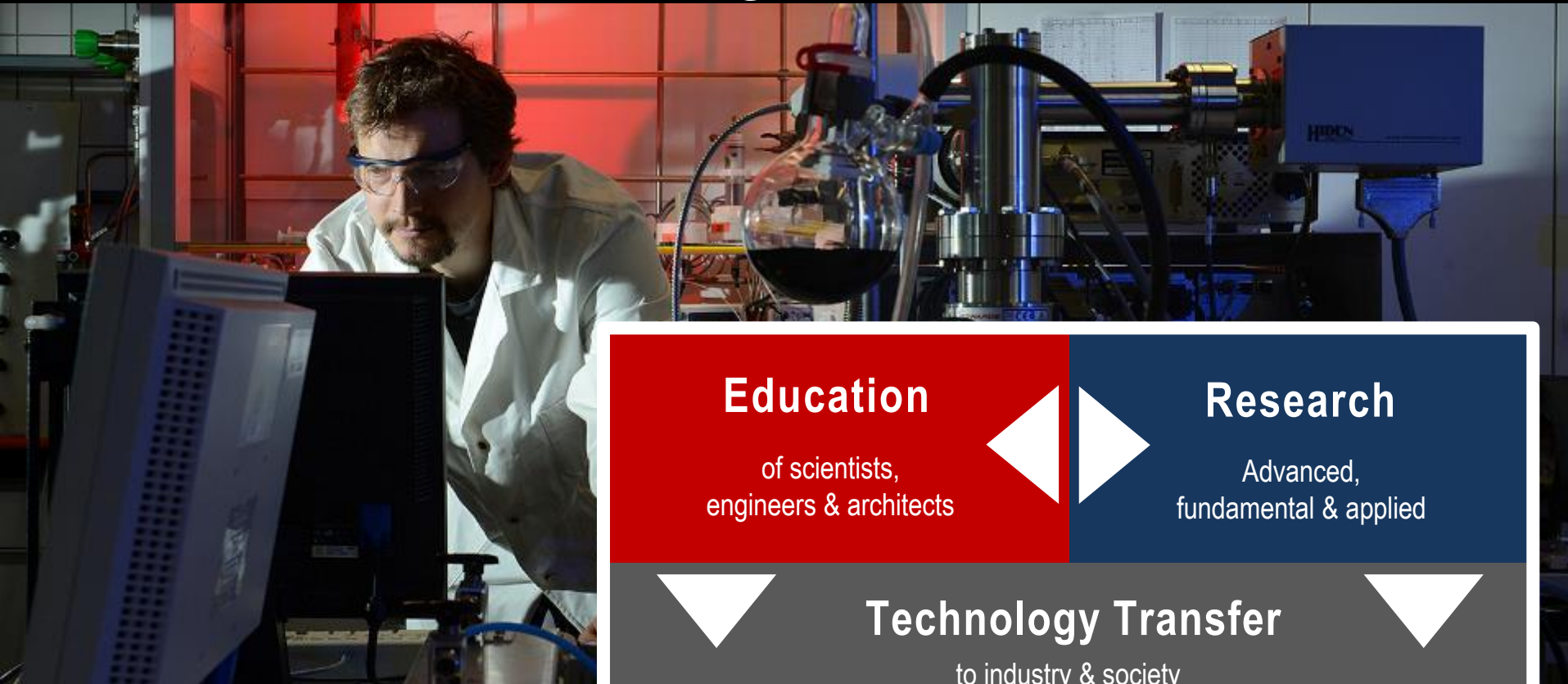
Schweizerische Eidgenossenschaft
Confédération suisse
Confederazione Svizzera
Confederaziun svizra

**SERVICE
ÉGALITÉ**



**UNIVERSITÉ
DE GENÈVE**

EPFL's three missions according to the Federal Act



**5 Schools
13 Sections**

ENAC

Architecture, Civil
Engineering, Environmental
Science & Engineering

SB

Mathematics
Chemistry
Physics

STI

Electrical Engineering
Microengineering
Mechanical Engineering
Materials Science

IC

Computer
Science
Communication
Science

SV

Life Sciences
& Technology
Bioengineering

2 Colleges

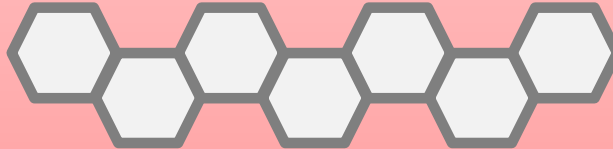
CDM

Management
of Technology
Financial Engineering

CDH

Human &
Social Sciences

**7 Interdisciplinary
Centers**

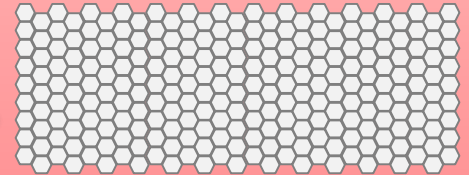


Transport, Energy, Neuroprosthetics, Design (EPFL+ECAL Lab) etc...

26 Institutes



**350 Laboratories
and Research Groups**



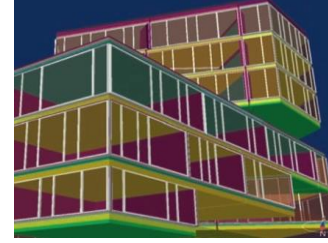


EPFL Neuchâtel - Microcity

EPFL IMT Ne: 200-250 students & scientists

CSEM: 250-300 scientists & staff

11 chairs including 3 sponsored research chairs:
(Patek Philippe and PX Group and Richemont)



Blue Factory – Fribourg Project Smart Living Lab

4 sponsored research chairs

(2 by the canton of Fribourg + 2 from EPFL)

1 Invited Professor

50 scientists & staff



Campus Biotech Geneva

Neuro/Immuno-engineering

(10-12 research chairs)

Human Brain Project (HBP)

Center for Neuroprosthetics (CNP)

EPFL-UNIGE research center

17'000m²

EPFL
Main
Campus



EPFL Valais Wallis

15 research chairs in the fields of energy (hydraulic, biomass, CO2...), health (biotech), bioengineering (SUVA) and ophthalmology (IRO) EPFL-HES campus in Sion
250-300 scientists & staff



Gender dimension in research content

European teens – especially girls – dream about cars



Safety is a real concern for girls when taking public transportation. ©iStock

17.03.17 - A study on mobility patterns among young people shows that under-18s have a very positive image of cars. The researchers' approach relied heavily on social media.

Food data at your fingertips

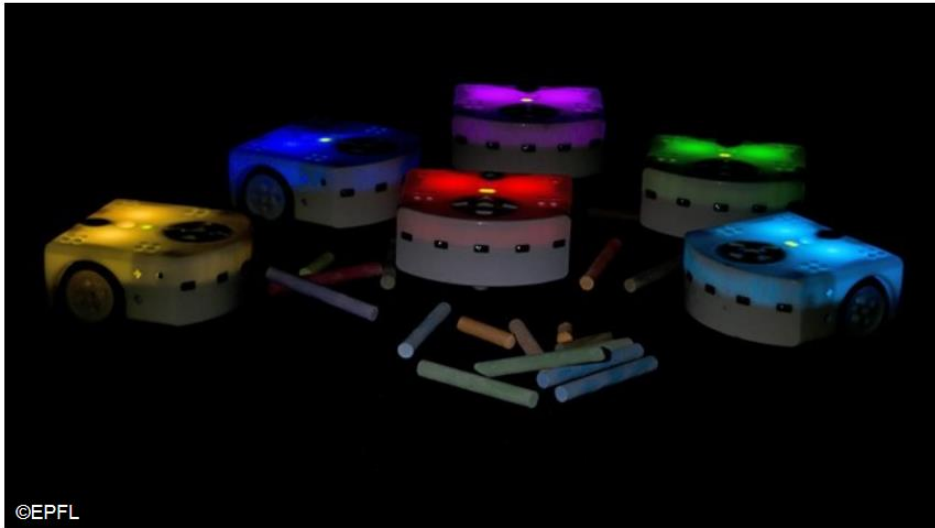


The app scans the bar code of products available in large grocery stores. © Alain Herzog - EPFL

22.11.16 - EPFL is launching openfood.ch, a website that provides the public with data on more than 14,000 food products sold in Switzerland. The website's data set will be a real gold mine when it comes to developing applications and innovative projects aimed at improving people's diet.

Gender dimension in research content

The robot Thymio is finding its niche in French schools



03.06.16 - Thymio, the teaching robot designed by EPFL and widely used in French-speaking Switzerland, is now making inroads elsewhere in Europe. In France, it has been incorporated in an important initiative to teach digital sciences in nursery and primary schools.

Deprivation: a decisive factor in obesity



25.01.17 - A joint study involving Lausanne University Hospital (CHUV) and the Ecole polytechnique fédérale de Lausanne (EPFL) shows that people with a genetic predisposition to obesity are more likely to develop the condition if they find themselves in a situation of deprivation. The city of Lausanne was used as a test site by the researchers.

Gender dimension in research content



SCIENCE ▾

PL

The Human Brain Project
which strives to accelerate
brain-related medicine
This acceleration will be
research programmes in
simulation and multi-scale
enabling Research Infra



EXPLORE
THE
BRAIN



BRAIN
SIMULATION



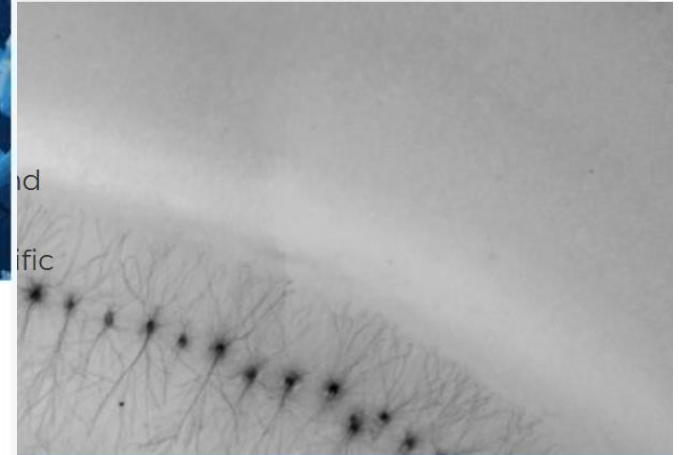
Young
Researchers
Event: Integrating
neuroscience data
into models and
simulations

▾

EDUCATION

FOR YOU... ▾

ABOUT ▾



ROBOTS



MASSIVE
COMPUTING



OPEN,
ETHICAL,
ENGAGED

Research Office – Facts & Figures

- ◆ Informs the EPFL research community on funding opportunities
- ◆ Provides support in the application process & contracting for public and not-for-profit funding
- ◆ Is responsible for ethical aspects linked to EPFL research projects
- ◆ Provides support in the management of large collaborative research projects

Swiss National Science Foundation Funding

Gender and Excellence: Challenges in Research Funding.

Focus on gendered dimensions in the perception and evaluation of excellence as well as on the **gender perspective in research**: need to take into account potential sex and gender differences with respect to the way research is carried out.



European Funding

Working towards gender equality is an essential part of European research and innovation policy. New developments related to careers, decision-making and, most recently, how the **gender dimension**¹ is considered in research and innovation content have been implemented.



¹ Taking into account as relevant the biological characteristics and the social and cultural features of women and men.

Gender in H2020: 3 objectives

HORIZON 2020

Gender balance
in decision
making
processes

Gender
dimension in
research and
innovation (R&I)
content

Gender
balance in
research
teams at all
levels



EU – Mapping presence of a gender dimension in research content

Table 7.10. Proportion of a country's scientific publications including a gender dimension in their research content, by field of science, 2002–2005 and 2010–2013

	Natural sciences		Engineering and technology		Medical sciences		Agricultural sciences		Social sciences		Humanities	
	02–05	10–13	02–05	10–13	02–05	10–13	02–05	10–13	02–05	10–13	02–05	10–13
World	0.1	0.2	0.0	0.1	2.8	3.9	0.0	0.0	6.8	7.2	3.9	3.9
EU-28	0.1	0.2	0.0	0.1	2.5	3.8	0.0	0.0	5.6	6.2	2.7	3.2
BE	0.2	0.2	0.0	0.1	2.4	3.5	0.0	0.0	4.3	5.1	1.6	2.4
BG	0.1	0.1	0.0	0.2	1.7	2.5	0.0	0.0	8.8	1.6	6.3	6.3
CZ	0.1	0.1	0.0	0.1	1.6	3.1	0.1	0.0	5.5	5.5	2.9	2.5
DK	0.3	0.3	0.1	0.1	4.5	5.3	0.0	0.0	2.6	4.6	2.5	3.6
DE	0.1	0.1	0.0	0.1	1.9	3.0	0.0	0.0	4.6	5.1	2.0	1.4
NO	0.3	0.3	0.1	0.1	6.0	7.6	0.1	0.0	7.6	6.8	4.4	3.8
CH	0.1	0.2	0.0	0.1	2.4	3.5	0.0	0.0	5.8	4.8	2.5	2.7
ME	0.0	0.0	0.0	0.0	2	5.8	0.0	0.0	0.0	6.1	2	0.0
MK	0.0	0.4	0.0	0.0	2.1	4.4	0.0	0.0	0.0	5.4	33.3	16.7
AL	0.0	0.5	0.0	0.8	7.0	7.0	0.0	0.0	0.0	0.0	0.0	25.0
RS	0.0	0.1	0.0	0.1	0.0	5.0	0.0	0.0	2	4.3	2	3.1

The propensity of integrating a gender dimension into research content is increasing. However, this is a new indicator, numbers should be seen as baseline levels, allowing their evolution to be monitored in the future

Source: SHE Figures 2015, EC

Research Office – Our services in a nutshell

Pre-award

ReO

- Promotion of funding opportunities
- Proposal pre-screening
- Proposal editing
- Grant application support

Award

ReO

- GAP & Signature
- Ethical Clearance Report
- Data Management Plan
- GrantsDB management

Post-award

ReO/SF/Library/RH

- Account opening (SF)
- Financial reporting & Audits (SF)
- Purchase of equipment (ReO/DABS)
- Ethics – Follow-Up (ReO)
- Timekeeping – Follow-Up (ReO & HR)
- Amendments – formal notifications (ReO)
- Data Management (Library/ReO/VPSI)

Close-out

ReO/SF/VPSI

- Financial Audits (SF)
- Ethics Audits (ReO)
- DMP Audits (VPSI)
- Data Storage (VPSI)

Role ReO – gender dimension in research content

Pre-award

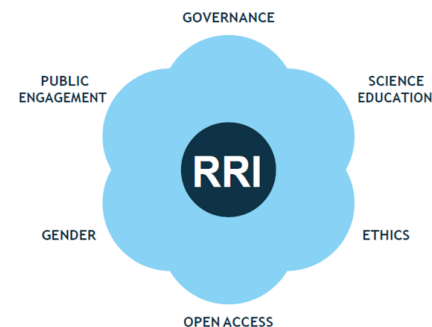
ReO

- Promotion of funding opportunities
- Proposal pre-screening
- Proposal editing
- Grant application support

- Draw **attention to gender dimension** in the content of R&I
 - means integrating sex and gender analysis into research.
 - taking into account biological characteristics and social/cultural features of both women and men in R&I.
- Organization of awareness raising **events**

Workshop – Responsible Research and Innovation (RRI)

Aim: to raise awareness about the concept of RRI and the RRI Toolkit among all stakeholders involved – Focus on outreach/advocacy on RRI with the ultimate aim – implementation of RRI.



Role ReO – gender dimension in research content

Pre-award

ReO

- Promotion of funding opportunities
- Proposal pre-screening
- Proposal editing
- Grant application support

➤ Bring res

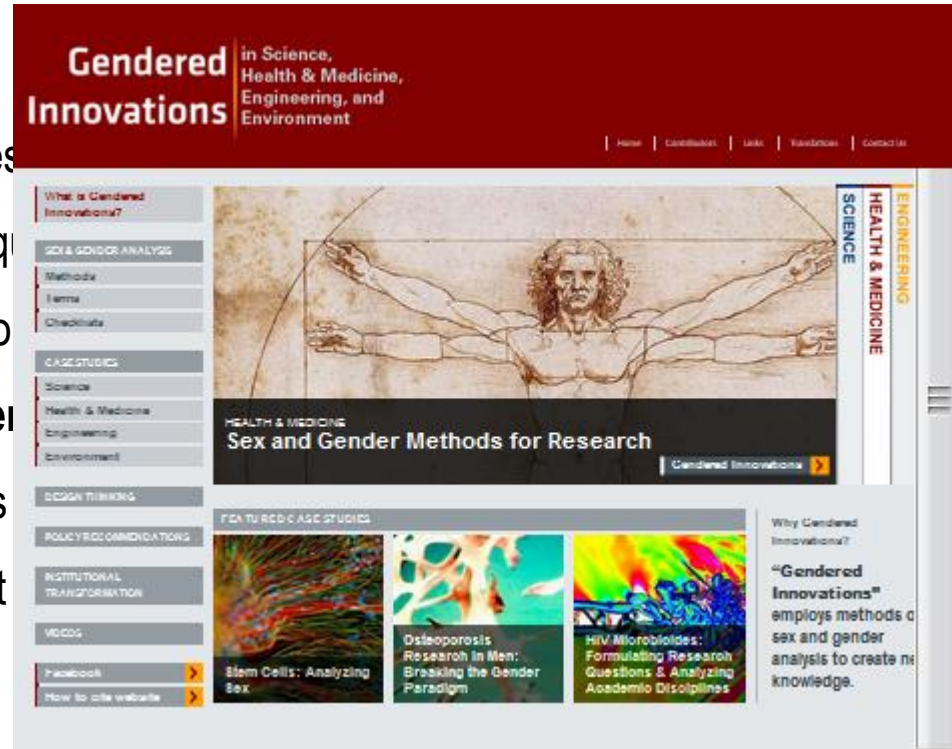
- Equ

- Co

➤ "Gender

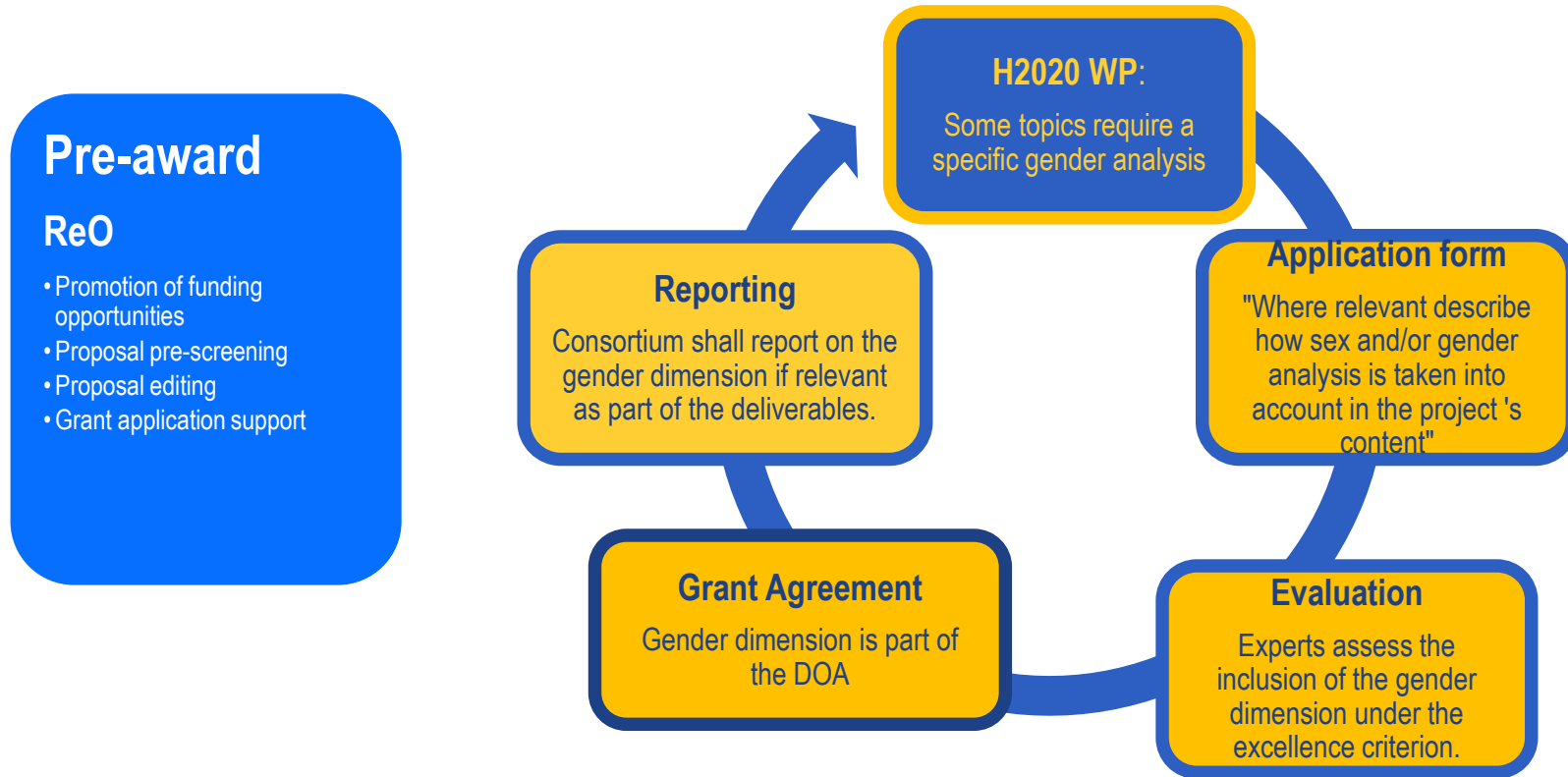
analysis

different



er
for
ovations/

Role ReO – gender dimension in research content



Role ReO – gender dimension in research content

Pre-award

ReO

- Promotion of funding opportunities
- Proposal pre-screening
- Proposal editing
- Grant application support

- Include partner(s) with **gender expertise**
- Use **check lists** from **Gendered Innovations** project
- Answer question 1.3 of the **application form** on gender / sex analysis
- Training on **gender equality** is an eligible cost
- **Leaving out gender dimension is a lost opportunity on innovation and weakens excellence**
- **Gender balance** in research teams is a ranking factor

Role ReO – gender dimension in research content

Post-award

ReO/SF/Library/RH

- Account opening (SF)
- Financial reporting & Audits (SF)
- Purchase of equipment (ReO/DABS)
- Ethics – Follow-Up (ReO)
- Timekeeping – Follow-Up (ReO & HR)
- Amendments – formal notifications (ReO)
- Data Management (Library/ReO/VPSI)

- **Start-to-Run** workshops for large projects
 - Employment of project team members: European Charter for Researchers and the Code of Conduct for the Recruitment of Researchers
 - Gender Dimension
- Follow-up on **reporting** issues

The screenshot displays the 'Grant Management' interface for 'Project Continuous Report'. It shows a progress bar with five categories: Publishable Summary, Deliverables, Publications, Patents (IPR), and Gender, each with a green checkmark. Below this, the 'Gender' section is expanded, showing the 'Gender Dimension in the Project' and 'Gender of R&D participants involved in the project'.

Gender

Gender Dimension in the Project

Does the project include a gender dimension in research? ☐ Yes ☒ No

Gender of R&D participants involved in the project

Please include in the count the participants working for Third Parties (if appropriate)

Organisation	Number of Female participi	Number of Male participar	Total Number of participar
1 - ECOLE POLYTECHNIQUE FEDERALE DE LAUSANNE	1	0	1

Role ReO – gender dimension in research content

Close-out

ReO/SF/VPSI

- Financial Audits (SF)
- Ethics Audits (ReO)
- DMP Audits (VPSI)
- Data Storage (VPSI)

- **Article 32 of the H2020 GA: RECRUITMENT & WORKING CONDITIONS** for researchers
 - Preparation of audits on Gender Issues
- Follow-up on **reporting** issues



Thank you !