



# STUDENT SERVICES' SESSION

## Programme

*Introduction by Daniela Sauge, Head of Academic Exchange Office*

1. Culture
2. Sports
3. Santé Psychologie – Health Psychology
4. Soutien Enseignement et Apprentissage – Learning support
5. Maison des Langues
6. Bibliothèque – Library
7. Egalité – Equality
8. STEPS – Security
9. Centre d'impression
10. Geneva Summer Schools
11. IT

# Cultural activities

## What is culture at UNIGE?

- 60-70 classes and workshops on music, dancing, nature, drama, audio recording and edition, photography and image edition, writing
- A film club with 30-40 session per year
- A choir, an orchestra, a chamber choir, a current music choir and a gospel choir
- 10-20 events per year
- 80-100 free tickets for students each week



# Classes and activities

Ableton Live  
Academic drawing  
Argentinian tango  
Artist's workshop  
Audio recording  
Bachata  
Brass ensemble  
Cinema: film analysis  
Classical dance  
Contemporary dancing  
Cuban salsa  
Current music choir  
Digital arts and literature  
Digital photography  
Drama and migration  
Eco-slam  
English Language drama  
Engraving  
Flamenco  
French drama  
Gender studies writing workshop

Graphic design  
Hip hop  
IArts : artificial intelligence and the arts  
Instruments and vocals  
Italian language drama  
Lindy hop  
Middle Eastern Dances  
Modern Jazz  
Musical comedy  
Photo lab  
Photo report  
Podcast  
Poetry-action  
Serigraphy  
Sonic exploration and concrete music  
Spanish language drama  
Super 8  
Support to creation  
Sustainable cosmetics  
Tap dancing  
Theatrical improvisation

Typography  
University chamber choir  
University gospel choir  
University orchestra  
Urban vegetable gardening  
Video game  
Video production  
Waacking  
Weapon play



# Film club / Ciné-club

- 3 thematic cycles (30-40 session per year)
- Every Monday at 8pm at Cinelux or Auditorium Arditi
- Sessions open to all with a single rate
- A committee composed mainly of students (10-15 people) who decide on the program
- A magazine with feature articles written by the committee

## Musical trainings

- A choir
- An orchestra
- A chamber choir
- A gospel choir
- A current music choir

## Events


- Theatrical performances
- Musicals
- Concerts
- Performances
- Photo exhibitions

## Free tickets for students

- Tickets offered by cultural institutions in the region (music, theater, cinema, etc.)
- A weekly offer (about 100 tickets) published in the Culture newsletter every Friday

# VIE DE CAMPUS


## CULTURE. UNIGE.CH

 UNIVERSITÉ  
DE GENÈVE


UNIVERSITÉFACULTÉSETUDESCOLLABORATEURSSERVICESALUMNI🛒0👤

VIE DE CAMPUSVie de camp...Aides financ...CarrièreCultureEnseigner A...ObservatoireSanté Psych...SocialSports


À L’AFFICHE



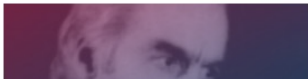
**SÉANCES D’ESSAI**  
41 activités à essayer sans inscription préalable  
Du 26 septembre au 1er octobre



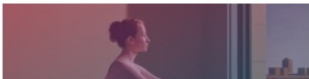
**NOUVEAUTÉS**  
11 nouvelles activités en automne 2022  
Instagram, waaking, éco-slam, IA, Arts,...



**QU’EST-CE QUE TU CROIS?!**  
Spectacle de l’atelier Théâtre et migration  
Les 22 et 23 septembre à Uni Mail

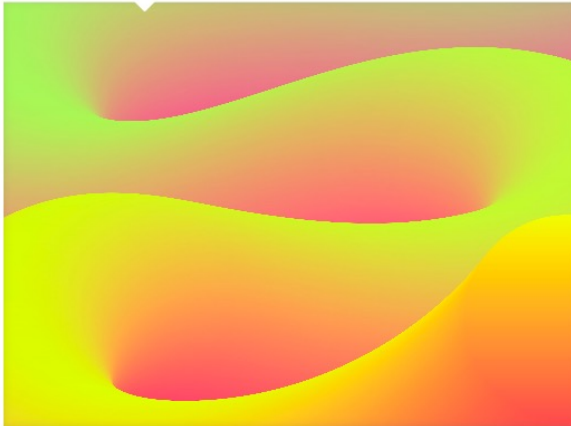


**NOUVEAUX ÉPISODES DE V.O.**  
Le podcast cinéma du campus



**DE LA TOILE À L’ÉCRAN**  
Prochain cycle du Ciné-club  
Dès le 3 octobre

ACTIVITÉS AUTOMNE 2022



TOUTES LES ACTIVITÉS

AUDIO

DANSE

ÉCRITURE

IMAGE

MUSIQUE

NATURE

NUMÉRIQUE

SOCIÉTÉ

THÉÂTRE



VIE DE  
CAMPUS

---

**SPORTS.**  
UNIGE.CH



VIE DE CAMPUS  
**SPORTS.**UNIGE.CH



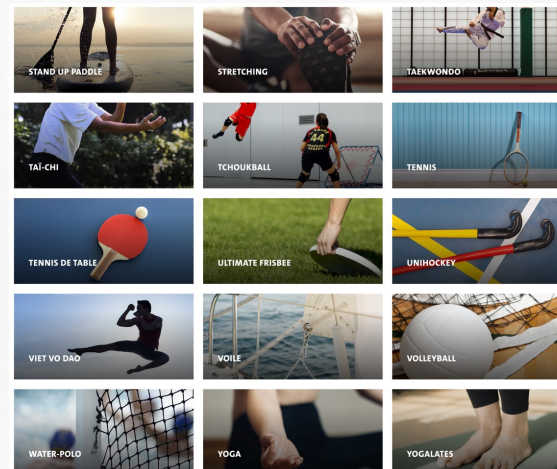
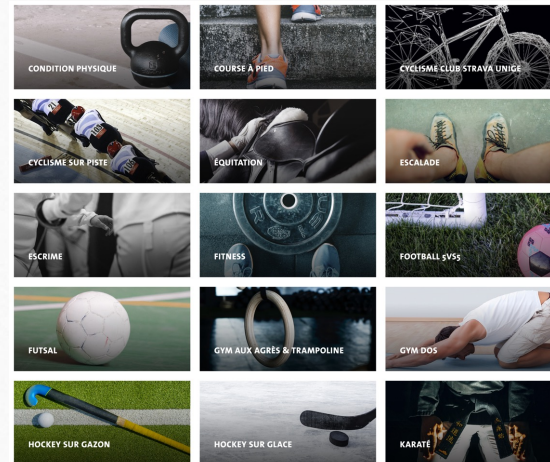
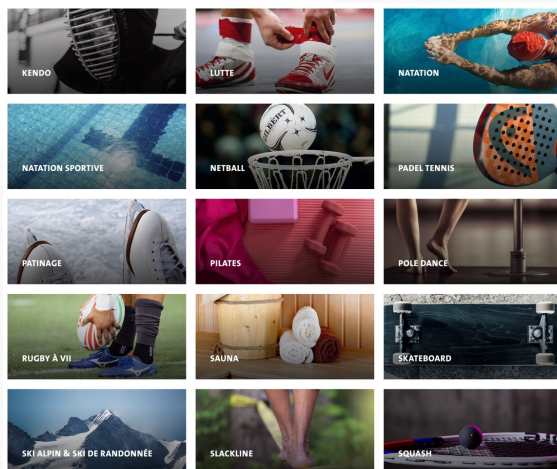
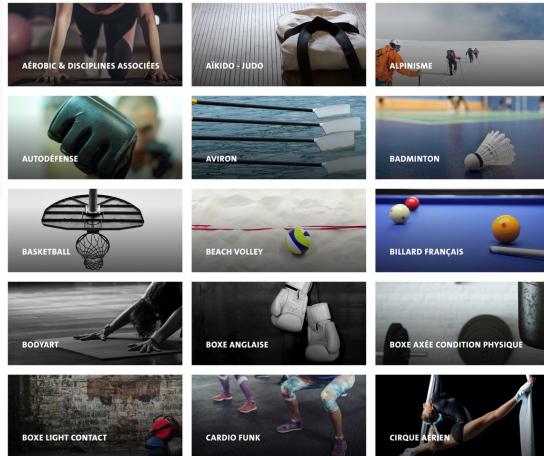
Hes·SO GENÈVE



UNIVERSITÉ  
DE GENÈVE



# + DE 60 DISCIPLINES



40+ activités  
hebdomadaires  
gratuites

Inscription dès le  
vendredi 23  
septembre, 12h sur  
[sports.unige.ch](https://sports.unige.ch)



# SEMAINE COURS D'ESSAI

## LUNDI 19.9

10:00 – 11:00	<b>BODYART</b> .....	MAIL – S140
11:00 – 12:00	<b>HATHA YOGA</b> .....	MAIL – S140
16:30 – 18:00	<b>YOGALATES</b> .....	MAIL – S140
17:30 – 19:00	<b>BOXE LIGHT CONTACT</b> .....	CSU-CHAMPEL
17:30 – 19:00	<b>FOOTBALL</b> .....	CSU-CHAMPEL
18:00 – 19:00	<b>CONDITION PHYSIQUE ET TBC</b> .....	TIR
18:00 – 19:00	<b>PILATES</b> .....	CAMPUS BIOTECH
19:00 – 20:30	<b>BASKETBALL</b> .....	CSU-CHAMPEL
19:00 – 20:00	<b>CONDITION PHYSIQUE ET TBC</b> .....	TIR
19:00 – 20:00	<b>NATATION – DÉBUTANT</b> (places limitées) .....	VERNETS
20:10 – 21:40	<b>AÉROBIC CARDIO MUSCU</b> .....	AUBÉPINE
20:30 – 22:00	<b>BASKETBALL 3X3</b> .....	CSU-CHAMPEL

## MARDI 20.9

10:15 – 11:30	<b>HATHA YOGA</b> .....	MAIL – S140
17:00 – 18:00	<b>YOGA HATHA FLOW</b> .....	TIR
17:45 – 18:45	<b>SQUASH</b> .....	CSU-CHAMPEL
18:00 – 19:15	<b>CARDIO FUNK</b> .....	EMILIE GOURD
18:00 – 19:00	<b>YOGA HATHA FLOW</b> .....	TIR
18:15 – 19:45	<b>BADMINTON</b> .....	DE STAËL
18:15 – 19:45	<b>CONDITION PHYSIQUE ET TBC</b> .....	HUGO-DE-SENGER
18:30 – 20:00	<b>BASKETBALL</b> .....	CSU-CHAMPEL
19:15 – 20:15	<b>CONDITION PHYSIQUE ET TBC</b> .....	TIR
19:15 – 20:00	<b>STRETCHING</b> .....	EMILIE GOURD
20:00 – 21:30	<b>BASKETBALL</b> .....	CSU-CHAMPEL
20:00 – 21:30	<b>VOLLEYBALL – MOYEN</b> .....	HUGO-DE-SENGER
20:15 – 21:45	<b>YOGALATES</b> .....	TIR

## MERCREDI 21.9

08:30 – 09:45	<b>YIN YOGA &amp; BALLS</b> .....	MAIL – S180
12:15 – 13:00	<b>AÉROBIC HIGH-IMPACT</b> .....	HUGO-DE-SENGER
13:15 – 14:15	<b>HATHA YOGA</b> .....	HUGO-DE-SENGER
14:30 – 16:00	<b>YOGALATES</b> .....	HUGO-DE-SENGER
17:30 – 19:00	<b>FOOTBALL</b> .....	CSU-CHAMPEL
17:30 – 19:00	<b>GYM AUX AGRÈS ET TRAMPOLINE</b> .....	CSU-CHAMPEL
18:15 – 19:45	<b>BADMINTON</b> .....	DE STAËL
18:20 – 19:50	<b>AÉROBIC CARDIO MUSCU</b> .....	DE STAËL
18:30 – 20:00	<b>VOLLEYBALL – DÉBUTANT/MOYEN</b> .....	CALVIN
18:30 – 20:00	<b>VOLLEYBALL – MOYEN</b> .....	CSU-CHAMPEL
18:30 – 20:00	<b>ZUMBA FIT</b> .....	EMILIE GOURD
20:00 – 21:30	<b>VOLLEYBALL – AVANCÉ</b> .....	CSU-CHAMPEL
20:00 – 21:30	<b>VOLLEYBALL – MOYEN</b> .....	CALVIN

## JEUDI 22.9

09:00 – 10:00	<b>PILATES</b> .....	MAIL – S180
10:00 – 11:00	<b>PILATES</b> .....	MAIL – S180
17:45 – 18:45	<b>SQUASH</b> .....	CSU-CHAMPEL
18:00 – 19:00	<b>TENNIS – TOUS NIVEAUX</b> .....	CSU-CHAMPEL
18:00 – 19:30	<b>FOOTBALL</b> .....	CSU-CHAMPEL
18:00 – 19:00	<b>GYM DOS</b> .....	HUGO-DE-SENGER
18:15 – 19:45	<b>BADMINTON</b> .....	DE STAËL
18:20 – 19:50	<b>AÉROBIC STEPS</b> .....	DE STAËL
18:30 – 20:00	<b>HATHA YOGA</b> .....	EMILIE GOURD
18:30 – 20:00	<b>VOLLEYBALL – DÉBUTANT/MOYEN</b> .....	CALVIN
19:00 – 20:00	<b>NATATION – MOYEN</b> (places limitées) .....	VERNETS
19:00 – 20:00	<b>TENNIS – TOUS NIVEAUX</b> .....	CSU-CHAMPEL
19:15 – 20:15	<b>CONDITION PHYSIQUE ET TBC</b> .....	TIR
20:00 – 21:00	<b>TENNIS – TOUS NIVEAUX</b> .....	CSU-CHAMPEL
20:00 – 21:15	<b>HATHA VINYASA YOGA</b> .....	ECOLE DU MAIL
20:00 – 21:30	<b>VOLLEYBALL – MOYEN</b> .....	CALVIN
20:15 – 21:15	<b>CONDITION PHYSIQUE ET TBC</b> .....	TIR

## VENREDI 23.9

09:00 – 10:00	<b>POWER YOGA</b> .....	MAIL – S180
10:00 – 11:00	<b>PILATES</b> .....	MAIL – S180
10:15 – 11:30	<b>SOULFUL YOGA FLOW</b> .....	MAIL – S140
11:00 – 12:00	<b>TAI CHI</b> .....	MAIL – S180
17:45 – 18:45	<b>CONDITION PHYSIQUE ET TBC</b> .....	TIR
18:15 – 19:50	<b>AÉROBIC TOTAL BODY CONDITIONING</b> .....	AUBÉPINE
18:30 – 20:00	<b>BASKETBALL</b> .....	CALVIN
18:30 – 20:00	<b>VOLLEYBALL – AVANCÉS</b> .....	CSU-CHAMPEL

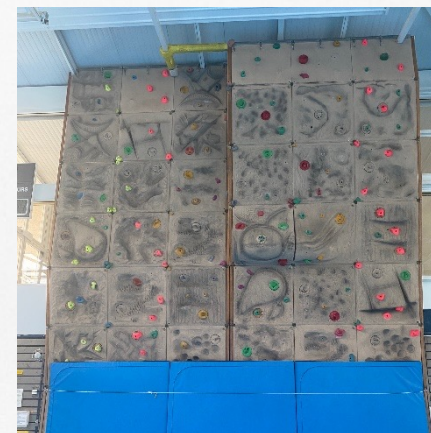
## SAMEDI 24.9

11:00 – 12:00	<b>AÉROBIC CARDIO-FIT</b> .....	CSU-CHAMPEL
---------------	---------------------------------	-------------

■ Activité hebdomadaire gratuite  
■ Cours au semestre payant  
Tous les détails et conditions sur [sports.unige.ch](https://sports.unige.ch)



# CENTRE SPORTIF UNIVERSITAIRE - Champel







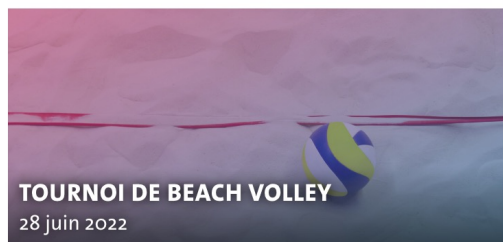
# PROGRAMME D'HIVER

- 3 camps de ski (Zermatt, Crans-Montana, St-Moritz)
- 1 camp d'alpinisme
- 1 camp d'escalade
- 1 camp de ski/grimpe
- 1 camp de randonnée à ski
- 4 week-end de randonnée à ski
- 8 samedis de ski
- 13 sorties de randonnées à ski

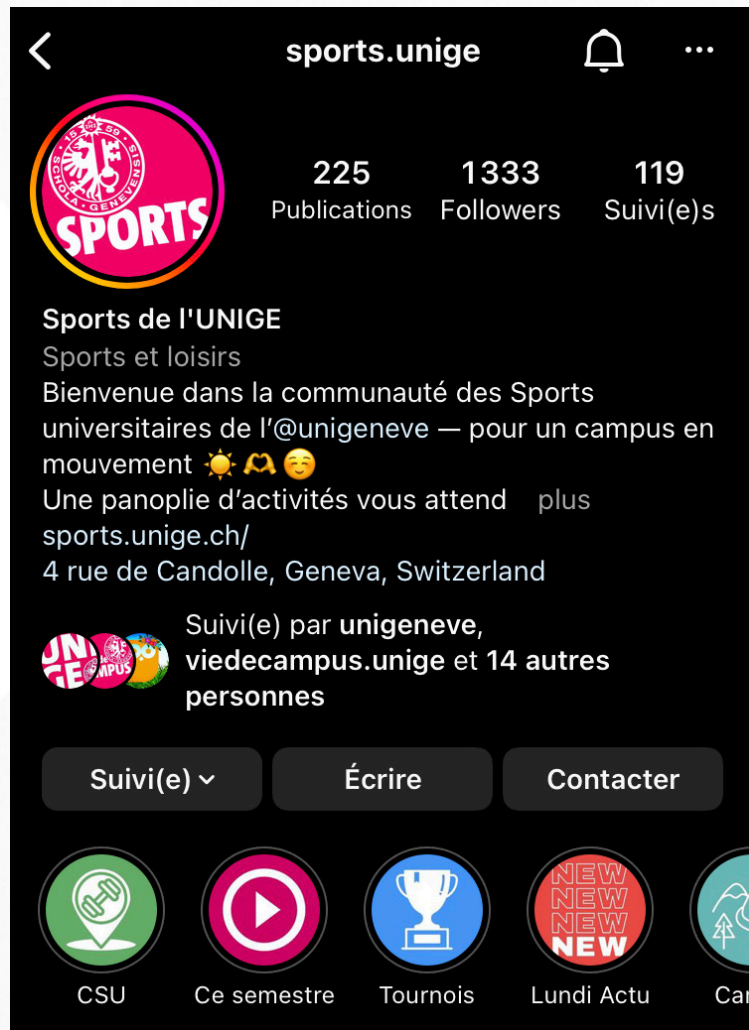
Ouverture des inscriptions le 1<sup>er</sup> novembre 2022.

# COMPÉTITIONS

- Des tournois internes
- Championnats suisses
- Championnats d'Europe



# RESTEZ INFORMÉ-E!



Suivez-nous sur les réseaux sociaux!

- Instagram
- Facebook



# QUESTIONS ?

---

## **CONTACT**

sports.unige.ch

[sports@unige.ch](mailto:sports@unige.ch)



Mobility IN

**SANTE  
—PSYCHOLOGIE.**  
UNIGE.CH



THE  
GRADUATE  
INSTITUTE  
GENEVA

—  
INSTITUT DE HAUTES  
ETUDES INTERNATIONALES  
ET DU DEVELOPPEMENT  
GRADUATE INSTITUTE  
OF INTERNATIONAL AND  
DEVELOPMENT STUDIES

Health  
Psychology  
&  
Special Needs



# Health Guidance

Are you worried about your physical health?

## UNIGE Doctor

### Discussion regarding

- Answers to your questions
- Health advice
- HIV tests vouchers
- Addresses of specialist doctors (gynecologist, etc.)

**Free of Charge**

More Info:

[sante-psychologie.unige.ch](https://sante-psychologie.unige.ch)  
[sante@unige.ch](mailto:sante@unige.ch)

## HUG Doctor

### Clinical consultation

- Clinical examination, radiography, laboratory tests, etc
- Medical monitoring and follow-up
- Prescriptions
- Medical certificate

**At a cost**

Reimbursed  
by medical insurance

*Subject to medical  
Confidentiality*



Plus d'infos:  
[Rendez-vous.SMPR@hcuge.ch](mailto:Rendez-vous.SMPR@hcuge.ch)  
+41 79 553 56 57



# Health Insurance ?

**ALWAYS REPORT YOUR  
HEALTH INSURANCE TO THE  
S.A.M.**

(Service des assurances maladies)

## Students living in Switzerland

**All foreign students will need to request a  
B training permit**

**And**

**Report their choice of Health Insurance to the S.A.M.**

**Only students NOT ENGAGED IN REMUNERATED ACTIVITIES IN SWITZERLAND  
can keep their «European Health Card» or «International Health Insurance»  
as long as declared to the S.A.M.**

**The «European Health Card» or any other «International Health Insurance»  
does not allow you to work in Switzerland**

**Students WITH REMUNERATED ACTIVITIES IN SWITZERLAND  
need to choose a Swiss Student Health Insurance (ScoreStudies, etc.)  
and declare it to the S.A.M.**



# Students living in France (frontalier)

## Health Insurance ?

### For Swiss and foreign students (EU or outside EU)

#### WITH Remunerated activities in Switzerland

Students need to choose between  
**CMU Frontalier (French system)**  
or  
**LAMal frontalier (Swiss system)**



**When working in Switzerland  
ALWAYS  
DECLARE YOUR  
HEALTH INSURANCE  
TO THE S.A.M.**

(Service des assurances maladies Suisse)

#### WITHOUT Remunerated activities in Switzerland

**EU / EFTA students:** Medical treatment in France  
using the «European Health Card»

**Outside EU students:** See with French authorities  
for medical treatment in France





# Psychological Counseling

## Are you anxious about your psychological health ?

Are exams making you nervous ?  
Is lack of sleep getting the better of you ?  
Feeling stressed or depressed ?  
Family or couple problems, eating disorder,  
violence, harassment, bereavement, etc.. ?

*CHF 25.- / In-house session  
(possible financial support)*

*Various types of therapeutic follow-ups  
are at your disposal*

*Multilingual confidential  
sessions*

**More Info:**

[sante-psychologie.unige.ch](https://sante-psychologie.unige.ch)  
[psychologique@unige.ch](mailto:psychologique@unige.ch)



# Special Needs Besoins Particuliers

- 1) Read our web page thoroughly
- 2) Fill in our online request **FORM**,
- 3) Add all your **DETAILED, RECENT**, medical tests, certificates etc..

**More Info:**

[sante-psychologie.unige.ch](http://sante-psychologie.unige.ch)  
[Besoins-particuliers@unige.ch](mailto:Besoins-particuliers@unige.ch)

# Learning support @UNIGE

« Succeed in your studies » program :

Workshops

Individual interviews

Soft skills training and development

Campus coach : peer mentorship program

Teaching evaluation (by students)

Learning support - Vie de camp X

https://unige.ch/dife/en/teaching-learning/learning/

UNIVERSITÉ DE GENÈVE

UNIVERSITY FACULTIES STUDENTS SERVICES

Portal | EN FR

# CAMPUS LIFE

Campus Life Finances Career Culture Teaching & Learning Observatory Health & Wellness Social Sports

## TEACHING & LEARNING

### Learning support

- SUCCEED IN YOUR STUDIES >
- CAMPUS COACH >
- EVALUATE YOUR TEACHINGS >
- DISTANCE LEARNING >
- TRANSVERSAL SKILLS >



Scan me !

# More resources available in French...



## Réussir ses études

### DES RESSOURCES POUR UN APPRENTISSAGE OPTIMISÉ!

L'UNICE s'engage à soutenir la qualité de l'enseignement et à développer des formes innovantes d'enseignement, proposant un cadre favorable à l'apprentissage et améliorant l'expérience étudiante. Nous mettons par ailleurs tout en oeuvre pour assurer la réussite académique de nos étudiant-es. Sur cette page, vous trouverez des ressources et des outils pour vous accompagner tout au long de votre cursus, de la découverte de votre environnement académique au développement de vos compétences transversales.

#### ACCÉDER AUX PLATEFORMES

- Programme des cours
- Mediaserver
- Moodle
- Portfolio
- MOOCs gratuits pour vous

#### METTRE TOUTES LES CHANCES DE SON CÔTÉ

- Ateliers Réussir ses études
- Campus Coach: mentorat étudiant-es
- Apprendre à apprendre
- Évaluer ses cours

#### ÉTUDIER À DISTANCE

- Les modalités d'enseignement
- Maltriser Moodle & Cie
- Ressources à distance
- Apprendre à apprendre à distance

#### ÉTOFFER SES COMPÉTENCES

- Liste des cours transversaux
- Compétences transversales
- Maison des Langues
- Mobilité académique
- Take IT easy: digital skills

#### EXPLOITER LA DOCUMENTATION

- Bibliothèque
- Brocante aux livres
- Repro Mail - impressions
- Imprimantes & Copieurs

#### TROUVER DES RÉPONSES

- FAQ Enregistrement des cours
- FAQ Évaluation des cours



Scan me !



# ... and in our Moodle space

## Les ressources de l'apprentissage à distance



Retrouvez ici tous nos tutoriels pour vous aider à gérer vos apprentissages à distance! Nous mettons aussi à votre disposition toutes les ressources de nos homologues qui pourraient vous aider!

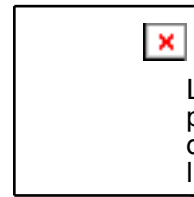
- Assimiler ses cours et préparer son support de révision en collaborant
- Collaborer oui... Mais avec quels outils?
- Elaborer des "to-do list" efficaces
- Gérer ses cours à distance
- Je dois suivre un cours sur Zoom... Je fais quoi?
- Je dois passer un examen avec Moodle test... Je fais quoi?
- Je passe un oral sur Zoom... Qu'est-ce que je dois savoir?
- Planifier l'écoute de ses cours enregistrés
- Prendre des notes efficacement en écoutant ses cours



Scan me !

# ANY QUESTIONS ?

 La partie de l'image avec l'ID de relation rld6 n'a pas été trouvé dans le fichier.



La partie de l'image avec l'ID de relation rld4 n'a pas été trouvé dans le fichier.

sea@unige.ch

# Maison des Langues



 **MAISON DES LANGUES**

[mdl.unige.ch](http://mdl.unige.ch)



**UNIVERSITÉ  
DE GENÈVE**



# Maison des Langues Université de Genève



Support courses in several languages:

- Français
- Deutsch
- Русский
- English
- Español

# Maison des Langues Université de Genève



Support **French** courses:

- courses are **free** of charge for all **Mobility IN students**
- for all levels
- 2 or 4 hours per week
- 3 to 6 **ECTS credits**

Information session: September 19 at 10:15, room MR290 (Uni Mail)

# Maison des Langues Université de Genève

Support **French** courses:

- Beginner and elementary levels Pre-A1, A1, A2
- Intermediate and advanced levels B1, B2, C1
- Specific courses : grammar, oral, argumentation, synthesis
- Discover Geneva, Switzerland and the francophone world
- French for academic purposes B2-C1
- French advanced course C2

**Orientation week: 19-23 September 2022**





# Maison des Langues Université de Genève



Support **English, German, Spanish** and **Russian** courses :

- Beginner, intermediate and advanced levels
- Specific courses : conversation, academic skills, Swiss German
- Preparation to IELTS & GOETHE

*Price per semester: from CHF 260.- to CHF 300*

**Orientation week: 19-23 September 2022**

# Maison des Langues Université de Genève

Tandem linguistique

University platform  
for language exchange

Free online registration

More than 70 languages



 MAISON DES LANGUES

[mdl.unige.ch](http://mdl.unige.ch)



UNIVERSITÉ  
DE GENÈVE

# UNIGE LIBRARY

---

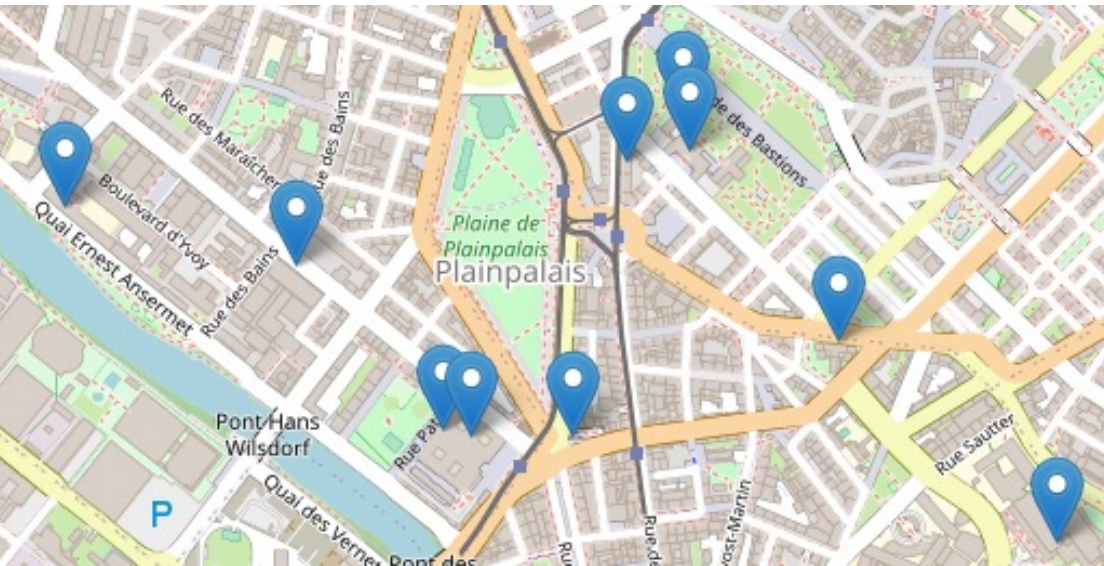


**UNIVERSITÉ  
DE GENÈVE**

**BIBLIOTHÈQUE**



# UNIGE LIBRARY



## NUMEROUS WORKPLACES

- **Several locations** in the city
- **+2'700 workplaces**
- Wireless network, computers, copy machines, printers and scanners

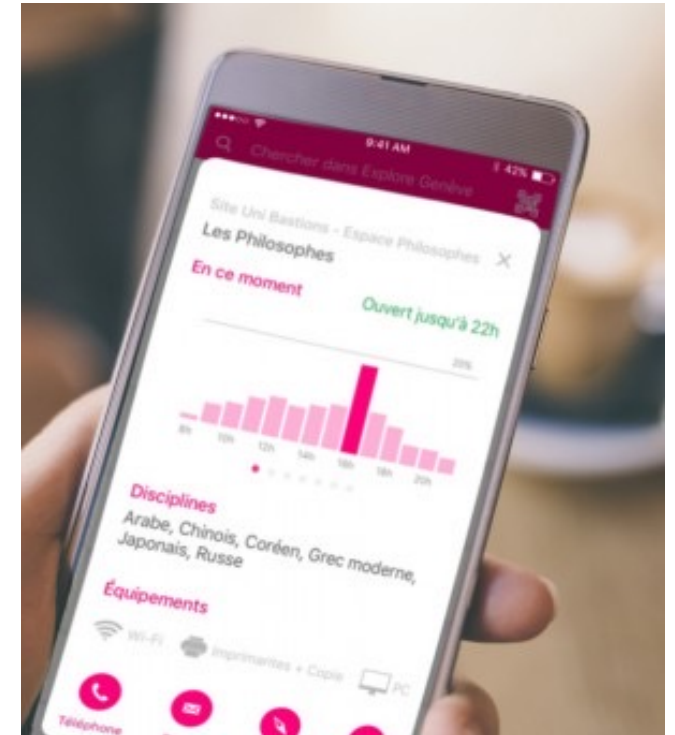
## EXTENDED OPENING HOURS

- Mo-Fr: 8am – 10pm
- Sa-Su: 9am – 6pm

**Registration** is mandatory to borrow: [unige.ch/-/library/registration](https://unige.ch/-/library/registration)

# Use the **UNIGE** Mobile App to...

- Search documents in the Library Catalog
- Display each space in a map
- Check the real-time attendance of workspaces
- Scan QR-codes from ebook posters to access to document on shelves
- ...



# Improve your information literacy skills



<https://infotrack.unige.ch/en>



25 funny course videos  
with quizzes available  
in English!

# Welcome

# Equality and diversity office



# Equality and diversity at UNIGE

## 4 main targets

These 4 targets are based on the institution's strategic commitments and regulatory and legal texts.

- Code of ethics and professional conduct for the Geneva institutions of higher education
- The Swiss Charter for Diversity in the workplace

- ✓ Prevention and protection
- ✓ Egalitarian and inclusive culture
- ✓ Research and innovation
- ✓ Knowledge transfer

# Prevention and Protection

#UNINIE against harassment: «Don't turn a blind eye»  
a website, a guidebook, a confidential adress [confiance@unige.ch](mailto:confiance@unige.ch)

Parenting guidebook: student – collaborator - hierarchy  
Update available online this autumn

FEM DO CHI: feminist self-defence workshop for students in the autumn  
Week-end of 19-20 november

# Egalitarian and inclusive culture

**Inclusive communication** In order to move away from the predominant use of the masculine form used as a generic and to standardize all forms of inclusive language practices.

**Change of first name, last name and/or gender directive:** the procedure is applicable to the entire university community

**Have a look on the Memento**

**Menstrual precariousness:** communication campaign and events related to the taboo of menstruation, pilot project of distributors of napkins and tampons for ladies.

# Research and innovation

## Annual Gender Award “Prix Genre”

UNIGE students in Bachelor’s and Master’s programs.

Send your thesis before 19 October.

## Interfaculty platform on gender

It’ll help you choosing courses on equality, gender, sexualities and diversity in the different curriculum.



# Equality and diversity annual events

**November 25<sup>th</sup>** : International Day for the Elimination of Violence against Women

**March 8<sup>th</sup>** : International Women's Day

**March 23<sup>th</sup>**: Sexual Harassment Awareness Day

**May 17<sup>th</sup>** : International Day Against Homophobia, Transphobia and Biphobia

For any question: CUAE and Equality commission of your faculty

# Follow & contact us

## Egality & diversity office



@unigeegalite



@egaliteunige



@egaliteunige



[www.unige.ch/egalite](http://www.unige.ch/egalite)





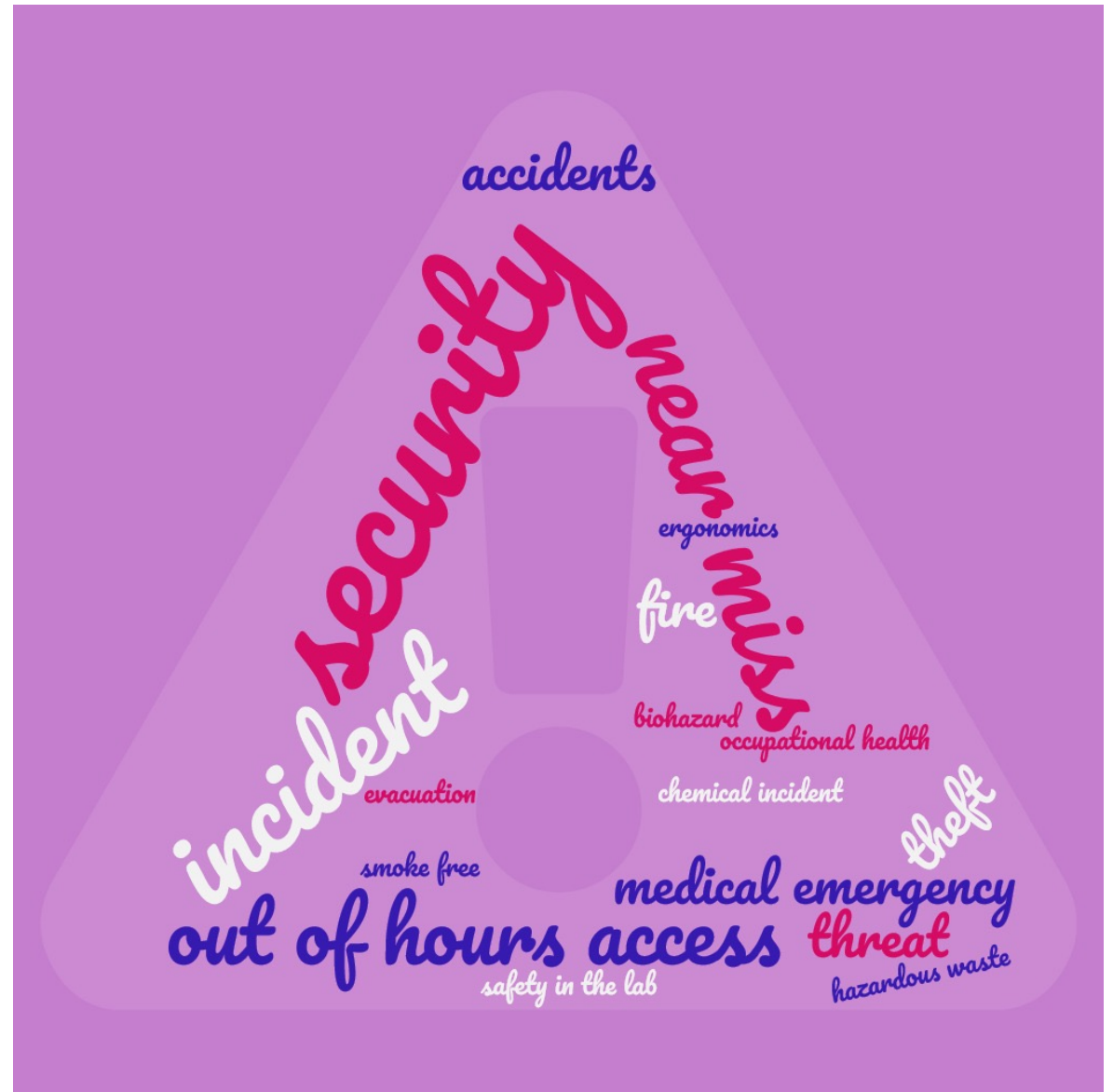
UNIVERSITÉ  
DE GENÈVE

SANTÉ AU TRAVAIL,  
ENVIRONNEMENT,  
PRÉVENTION, SÉCURITÉ

STEPS: occupational health – environmental protection – prevention – safety / security

We deal with issues concerning the health protection of students, staff and contractors

Contact us: [steps@unige.ch](mailto:steps@unige.ch)







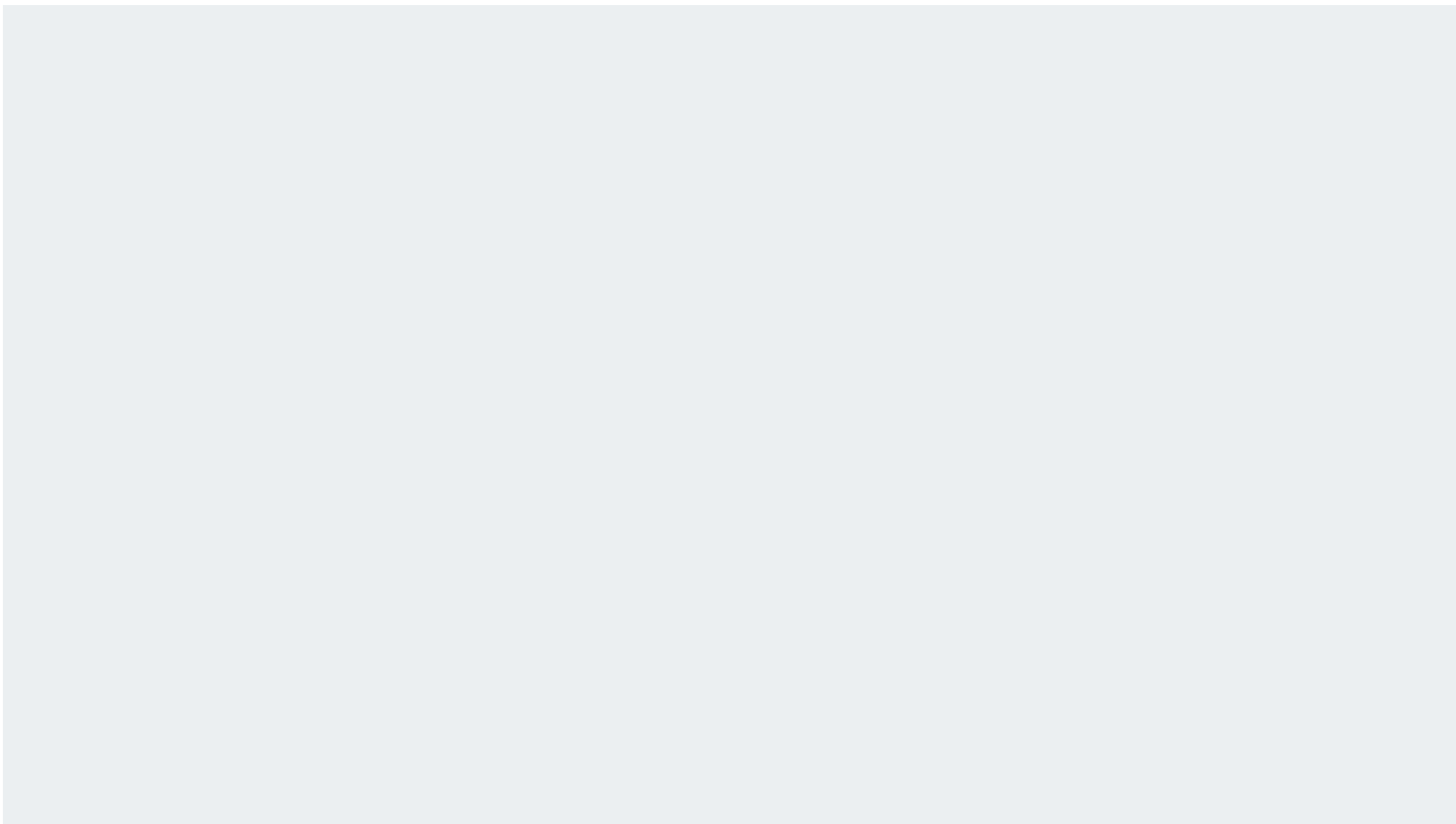
*Safety / Security*  
*24/7*  
*+41 22 379 1222*



Download our Booklet :  
«Safety at the University»  
[unige.ch/steps](https://unige.ch/steps)

COVID : check  
[unige.ch/coronavirus](https://unige.ch/coronavirus)

Download the UNIGE Mobile app!  
On Google play / App Store



# **CENTRE D'IMPRESSION**

**[WWW.UNIGE.CH/IMPRESSION](http://WWW.UNIGE.CH/IMPRESSION)**

**LE 16 SEPTEMBRE 2022**

# QUE FAISONS-NOUS ? / WHAT DO WE DO ?

Nous imprimons TOUT 😊

- Impression offset
- Impression numérique
- Impression grand format
- Reliure

We print EVERYTHING 😊

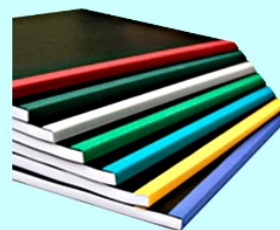
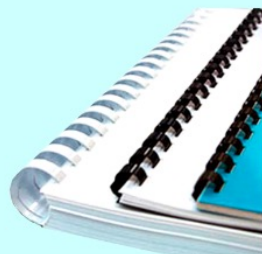
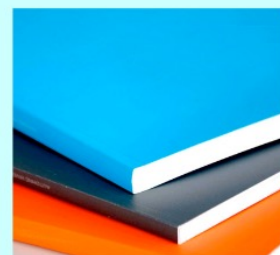
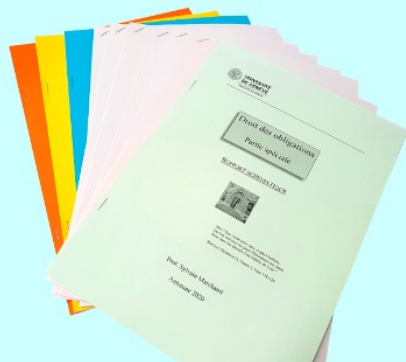
- Offset printing
- Digital printing
- Large format printing
- Binding



## QUE FAISONS-NOUS ? / WHAT DO WE DO ?

- Polycopié
- Thèse
- Mémo
- Poster / Roll-up
- Flyer
- Et beaucoup plus

- Polycopie
- Thesis
- Memo
- Poster / Roll-up
- Flyer
- And more



## QUOI DE PLUS ? / WHAT ELSE ?

- Vente de Polycopiés  
[www.polycopie.unige.ch](http://www.polycopie.unige.ch)
  - Impression à la demande
  - Conseils
  - Boutique en ligne :
- Online polycopies sale  
[www.polycopie.unige.ch](http://www.polycopie.unige.ch)
  - Print on demande
  - Advices
  - Web shop :

# WEB TO PRINT

# QUOI DE PLUS ? / WHAT ELSE ?

Web to Print : [www.impresssion.unige.ch](http://www.impresssion.unige.ch)


Toutes les catégories

**Brochures**

Liens utiles

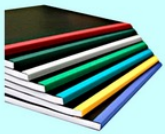



- Polycopiés
- Moodle
- Boutique UNIGE
- Charte graphique

**BROCHURES**











Tout type de document relié  
Livres, polycopié, brochure, prospectus, magazine

**DANS CETTE CATÉGORIE:**

 <b>ACHETER MAINTENANT</b> BROCHURE À BANDE Brochure bandes fastback	 <b>ACHETER MAINTENANT</b> BROCHURE DOS CARRÉ COLLÉ Brochure dos carré collé	 <b>ACHETER MAINTENANT</b> BROCHURE PIQUÉ PLI Brochure agrafée dans le pli	 <b>ACHETER MAINTENANT</b> BROCHURE SPIRALE WIRO Brochure spirale wiros
---	---	---	--



# QUOI DE PLUS ? / WHAT ELSE ?

DANS CETTE CATÉGORIE:			
 <p><b>A0</b> 84.1 x 118.9</p> <p>ACHETER MAINTENANT</p>	 <p><b>A1</b> 59.4 x 84.1</p> <p>ACHETER MAINTENANT</p>	 <p><b>A2</b> 42.0 x 59.4</p> <p>ACHETER MAINTENANT</p>	 <p><b>Banner</b></p> <p>ACHETER MAINTENANT</p>
<p>POSTER A0</p> <p>Affichage, poster, présentation</p> <p>Affiches grand format</p>	<p>POSTER A1</p> <p>Affichage, poster, présentation</p> <p>Affiches grand format</p>	<p>POSTER A2</p> <p>Affichage, poster, présentation</p> <p>Affiches grand format</p>	<p>BANNER</p> <p>Banner, banderole, bâche Sur tissu, plastique, papier</p> <p>Banner</p>
 <p>ACHETER MAINTENANT</p>	 <p>Qté <input type="text"/></p> <p>ACHETER MAINTENANT</p>	<p>AFFICHES / POSTERS</p>  <p>ACHETER MAINTENANT</p>	 <p>ACHETER MAINTENANT</p>
<p>ROLL-UP</p> <p>Livré avec la sacoche de transport</p> <p>Collé ou pincé</p>	<p>EMBALLAGE-POSTERS</p> <p>Tube télescopique</p> <p>Emballage-en-carton</p>	<p>AUTRES FORMATS</p> <p>Pour le Centre d'Impression</p> <p>Toutes options</p>	<p>DEMANDE DE DEVIS</p> <p>Toutes vos impressions spéciales.</p> <p>Devis personnalisé</p>

# POURQUOI NOUS ? / WHY US ?

Prix avantageux

Délais

Proximité

Reliure en libre service

Accueil

Good prices

Timing

Closeness

Free binding service

Welcome



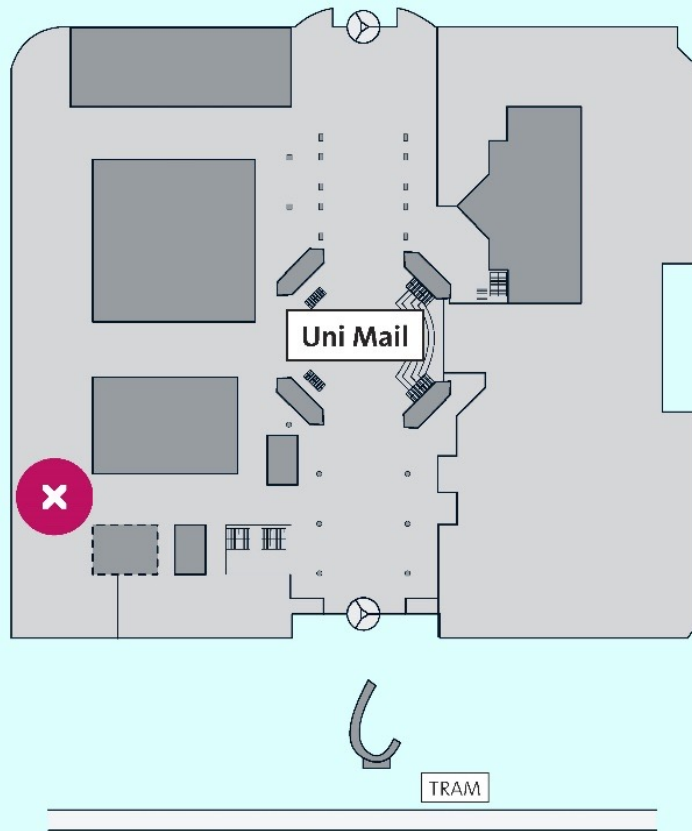
# IMPRIMER EST ÉCOLOGIQUE ! / PRINT IS GREEN !



**PAS CONVAINCU? VENEZ NOUS VOIR, NOUS VOUS EXPLIQUERONS POURQUOI.**  
**NOT CONVINCED? COME TO VISIT US, WE'LL EXPLAIN WHY.**

## CENTRE D'IMPRESSION

Où nous trouver



[WWW.UNIGE.CH/IMPRESSION](http://WWW.UNIGE.CH/IMPRESSION)

[WWW.IMPRESSION.UNIGE.CH](http://WWW.IMPRESSION.UNIGE.CH)

[Impression@unige.ch](mailto:Impression@unige.ch)



# GENEVA SUMMER SCHOOLS



UNIVERSITÉ  
DE GENÈVE



# Target Audience

- 3rd year Bachelor students
- Master's students
- PhD candidates
- Junior professionals



# Admission Requirements

- Fee-based courses
- Competitive
- No mandatory previous knowledge for most of our courses

# Topics of Global Significance

- Geneva: capital of multilateralism
- Recognised areas of expertise
  1. peace, security and disarmament
  2. humanitarian action and humanitarian law, human rights and migration
  3. labour, economics, trade, science and telecommunications
  4. health
  5. the environment and sustainable development





# Knowledge Sharing

- Experts from IOs and NGOs
- Keynote speakers
- University community
- Academic lectures
- Visits, round tables and debates





# What we offer

- Credit transfer
- Special fares **(50% for you)**
- Assistance with accommodation
- Networking opportunities
- Global perspective
- Innovative learning methods



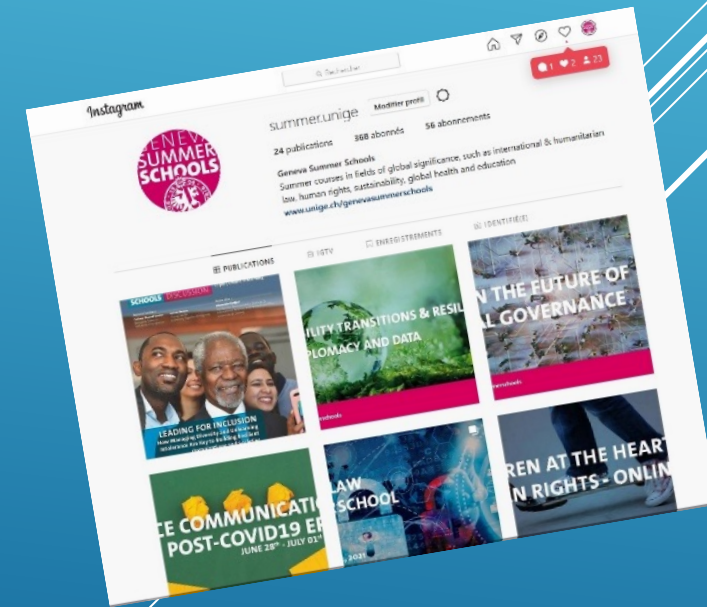
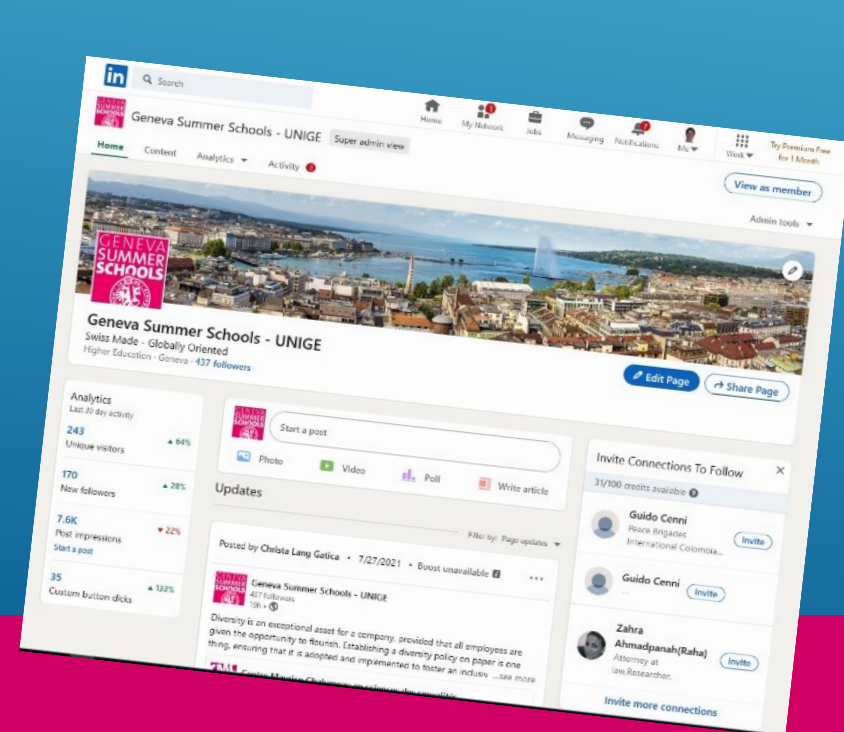
# Next steps

- Visit our website at <https://www.unige.ch/genevasummerschools/>
- Choose your course
- Register early (between 1st December 2022 and 15 April 2023)
- Extend your accomodation (if applicable)
- Extend your study permit (if applicable)



# Contact us

- Email: [gss@unige.ch](mailto:gss@unige.ch)
- Phone: +41 22 379 80 90
- Website: [www.unige.ch/genevasummerschools/](http://www.unige.ch/genevasummerschools/)
- Social Media: #summerunige @summer.unige



# Questions?



UNIVERSITÉ  
DE GENÈVE

DIVISION DU SYSTÈME ET DES  
TECHNOLOGIES DE L'INFORMATION  
ET DE LA COMMUNICATION

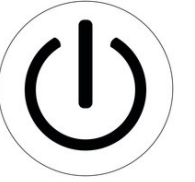
# WELCOME TO THE DIGITAL CAMPUS







# KEY INFO FOR A GOOD START



1. What are the most important tools ?
2. How to manage my passwords ?
3. What is the « multiservice card » ?
4. How to install the basics (e.g., Wi-Fi) ?
5. How do I keep my computer protected ?
6. How can I obtain IT support ?



# 1. IMPORTANT TOOLS



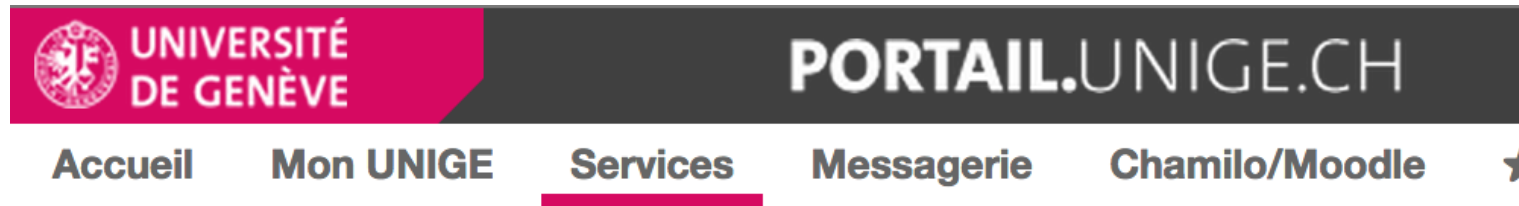
- UNIGE Portal
- Webmail
- Moodle
- Mediaserver
- Zoom
- UNIGE Mobile App



<https://catalogue-si.unige.ch>



# UNIGE PORTAL



- Address: <https://portail.unige.ch>
- Useful for managing ...
  - your multiservice card
  - your password
  - your lectures and exams (check with your faculty before)
  - your print credits



# WEBMAIL



Address: <https://outlook.office.com> or from the portal

Important information received:

- Administrative (courses, exams, etc.)
- Academic (Moodle, etc.)

Official communication channel with you



# MOODLE



- Address : <https://moodle.unige.ch>
- Useful for ...
  - accessing your learning materials
  - submitting your works
  - conducting online activities (groups, quiz, etc.)







# MEDIASERVER



Address: <https://mediaserver.unige.ch>

Useful for accessing to ...

- recorded lectures
- multimedia educational contents



# ZOOM



Address: <https://unige.zoom.us>

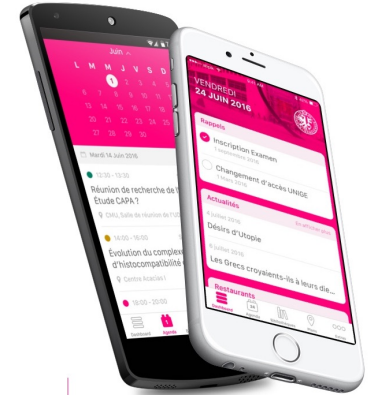
Useful for ...

- access your online lectures
- communicate with your teachers



# UNIGE MOBILE APP

- Available on



- Useful to ...

- configure your Wi-Fi, email, VPN, ISIs+ account
- check your exam times
- find your classrooms and your teacher's offices
- consult the opening times and attendance of the Library's sites
- consult the menus of the cafeterias and get special discounts thanks to UNIPASS



## 2. ACCOUNTS & PASSWORDS

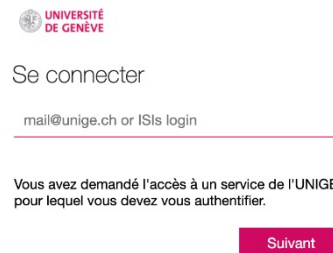


### UNIGE ISIs and ISIs+

SWITCHedu-ID

- You need it to access...

- UNIGE Portal
- Webmail
- Zoom
- Wi-Fi



- You need it to access...

- Moodle
- Mediaserver
- Portfolio
- SLSP-swisscovery



To create it: <https://unige.ch/-/mes-comptes>



# 3. YOUR MULTISERVICE CARD

- You need it to ...
  - print, copy, scan documents
  - borrow books at the library
  - prove your student status (**exams**, sports, cafeteria, etc.)
- What if I lose my card ?
  - Block it (via the portal)
  - Ask for a new card (helpdesk)



NEED TO BE VALIDATED  
IN THE TERMINALS







## 4. HOW TO INSTALL THE BASICS ?



<https://plone.unige.ch/distic/pub/welcome-days/>

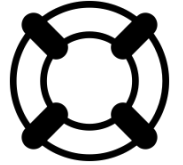


## 5. KEEP YOUR COMPUTER PROTECTED

- By carefully managing your passwords
  - **Never share** your ISIs password
- By applying updates (Windows, Mac OS, software, browsers) as soon as possible
- By opening only messages whose sender you know
  - For more information :  
<https://www.unige.ch/start-it/La-securite-etudiants/Securite.html>



## 6. IT SUPPORT



- Appointed and trained students are available to help you, in the computer rooms and libraries
  - To locate them: [unige.ch/-/are-i](https://unige.ch/-/are-i)
- Helpdesk (passwords, multiservice card)
  - Address: <https://catalogue-si.unige.ch/en/support-etudiants>