

Annexe A

Cartes additionnelles

A.1 Isochrones

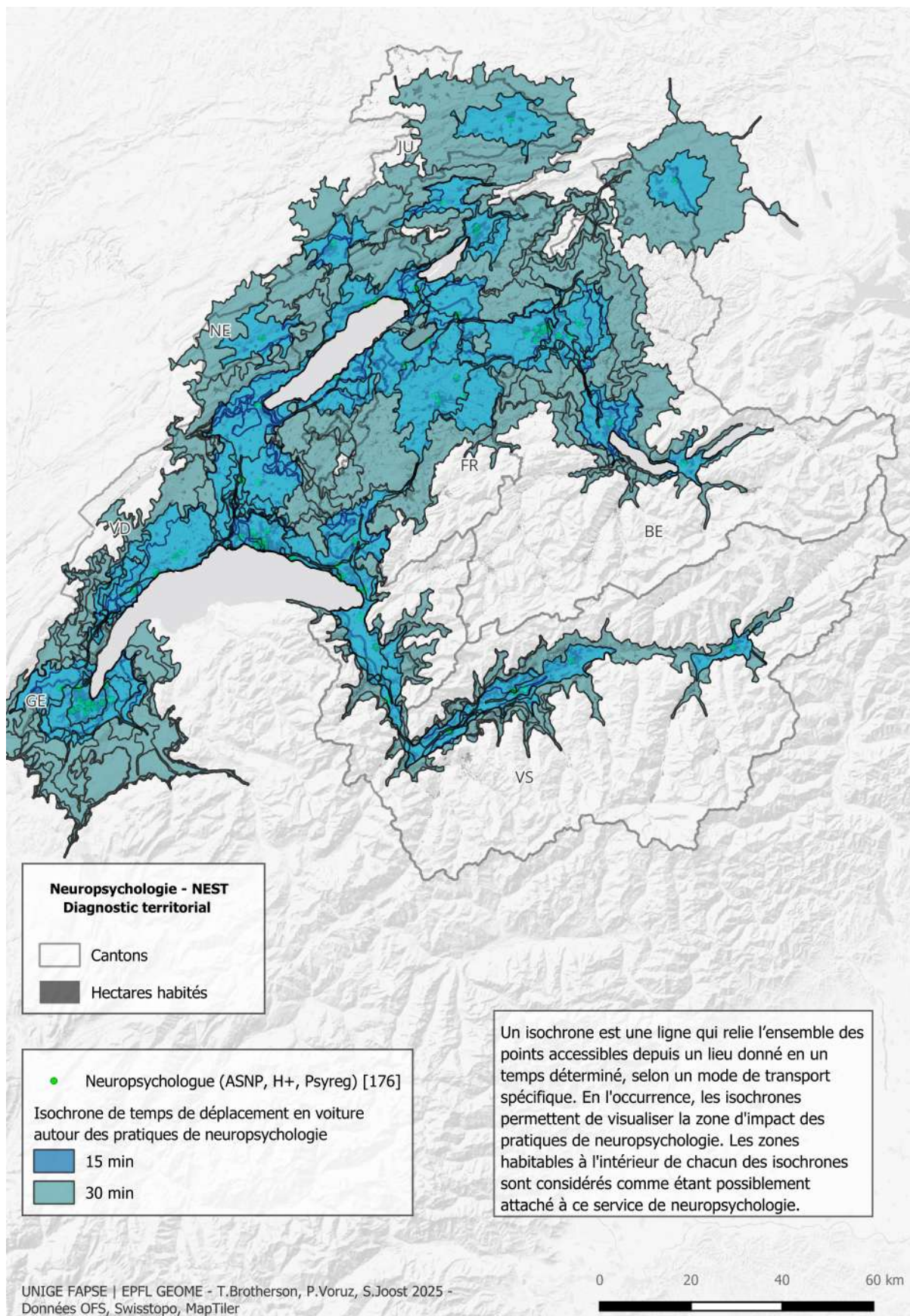
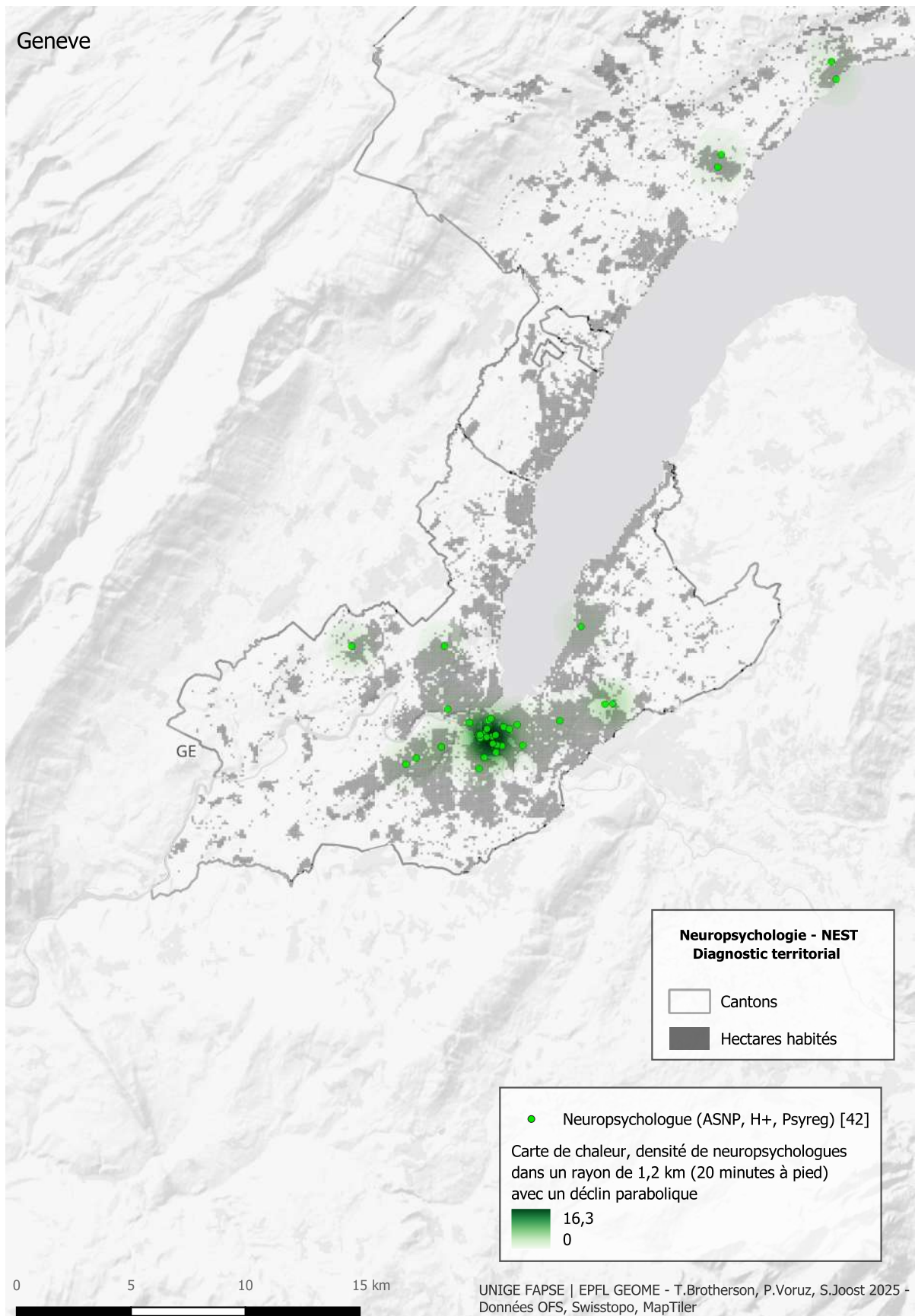
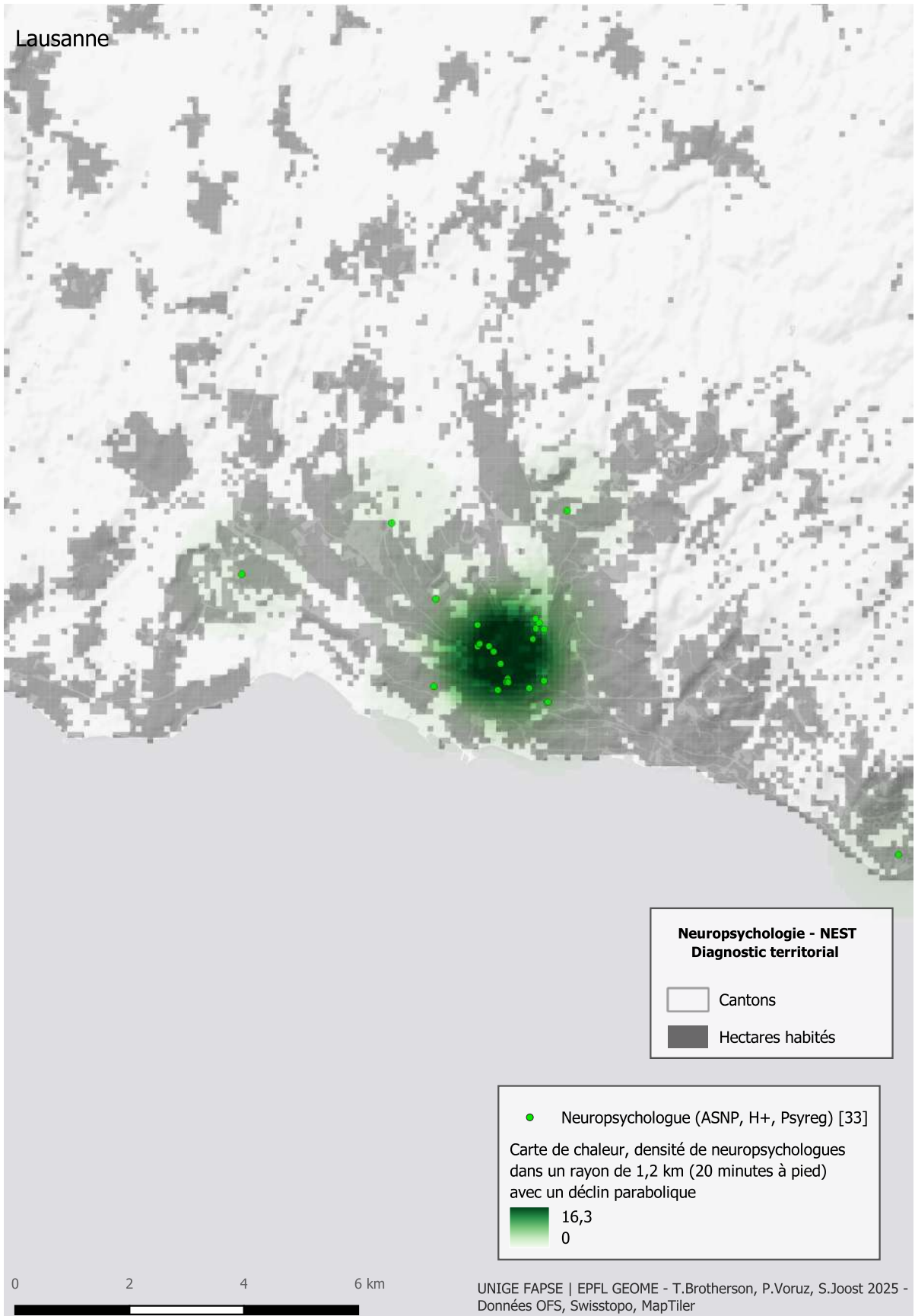


FIGURE A.1 – Isochrones 15 min (contour clair) et 30 min (contour foncé) en voiture autour des 176 pratiques. Les « trous » de la bordure alpine et jurassienne définissent des déserts neuropsychologiques.

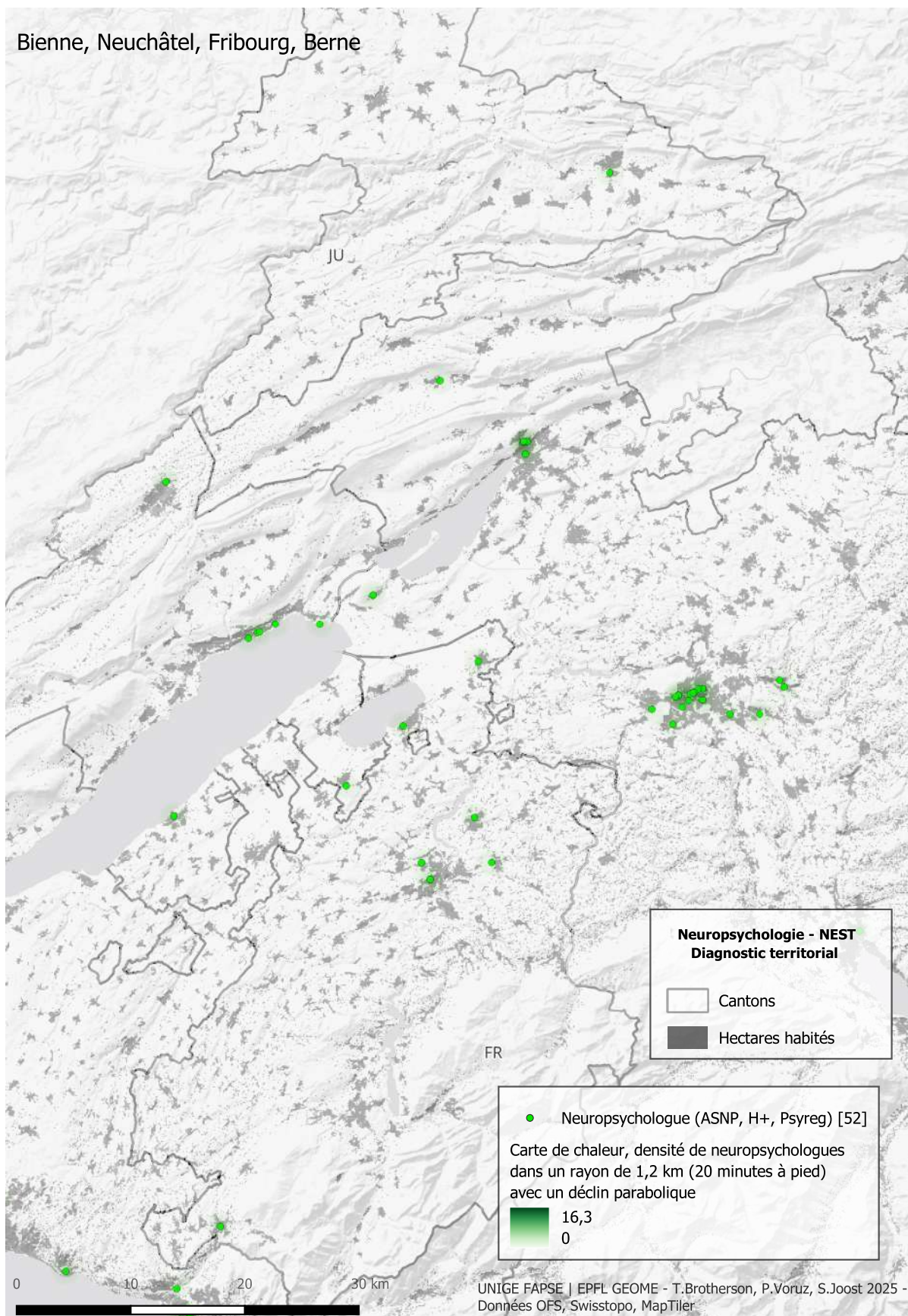
A.2 Zoom sur la répartition des neuropsychologues



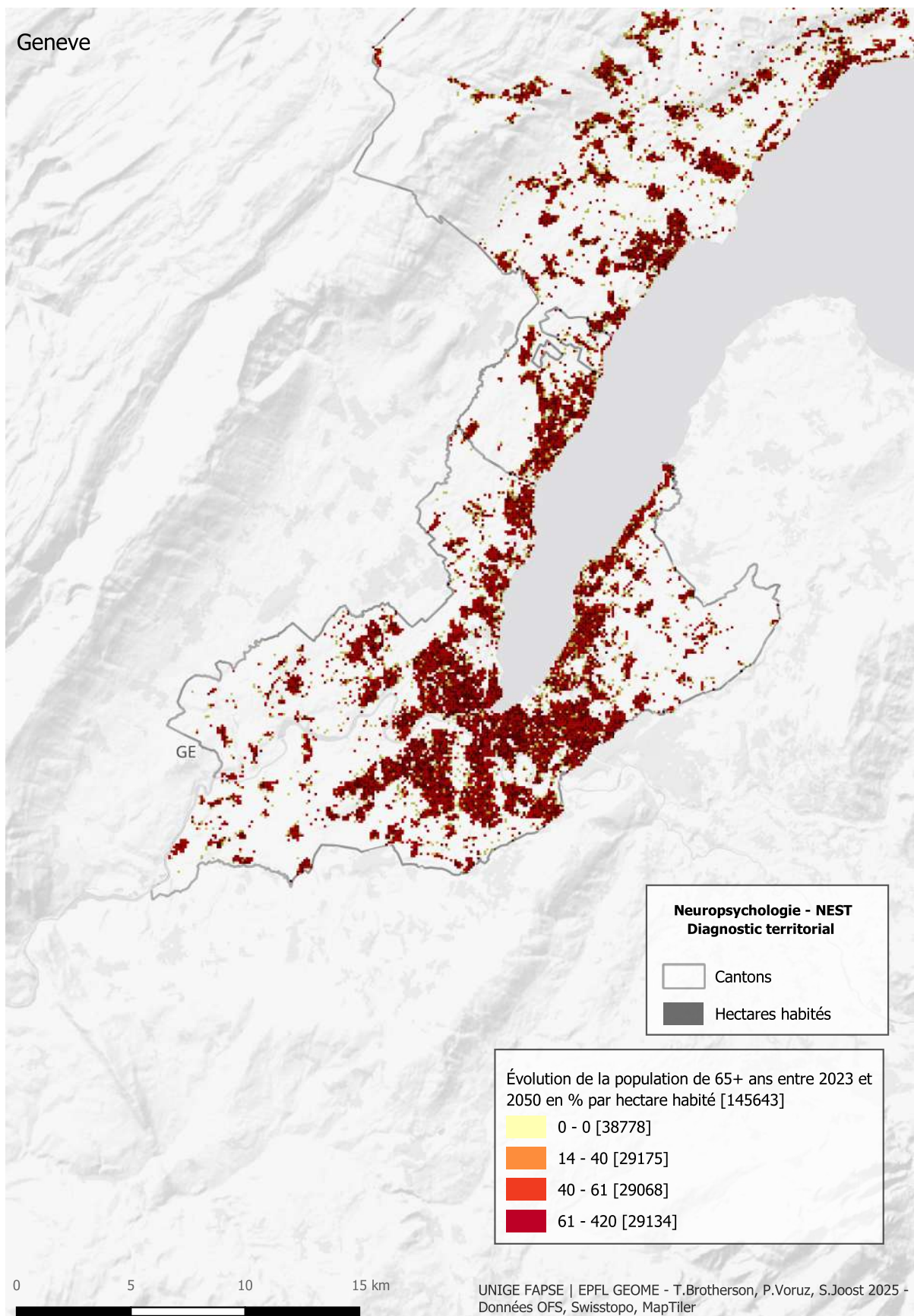
Lausanne



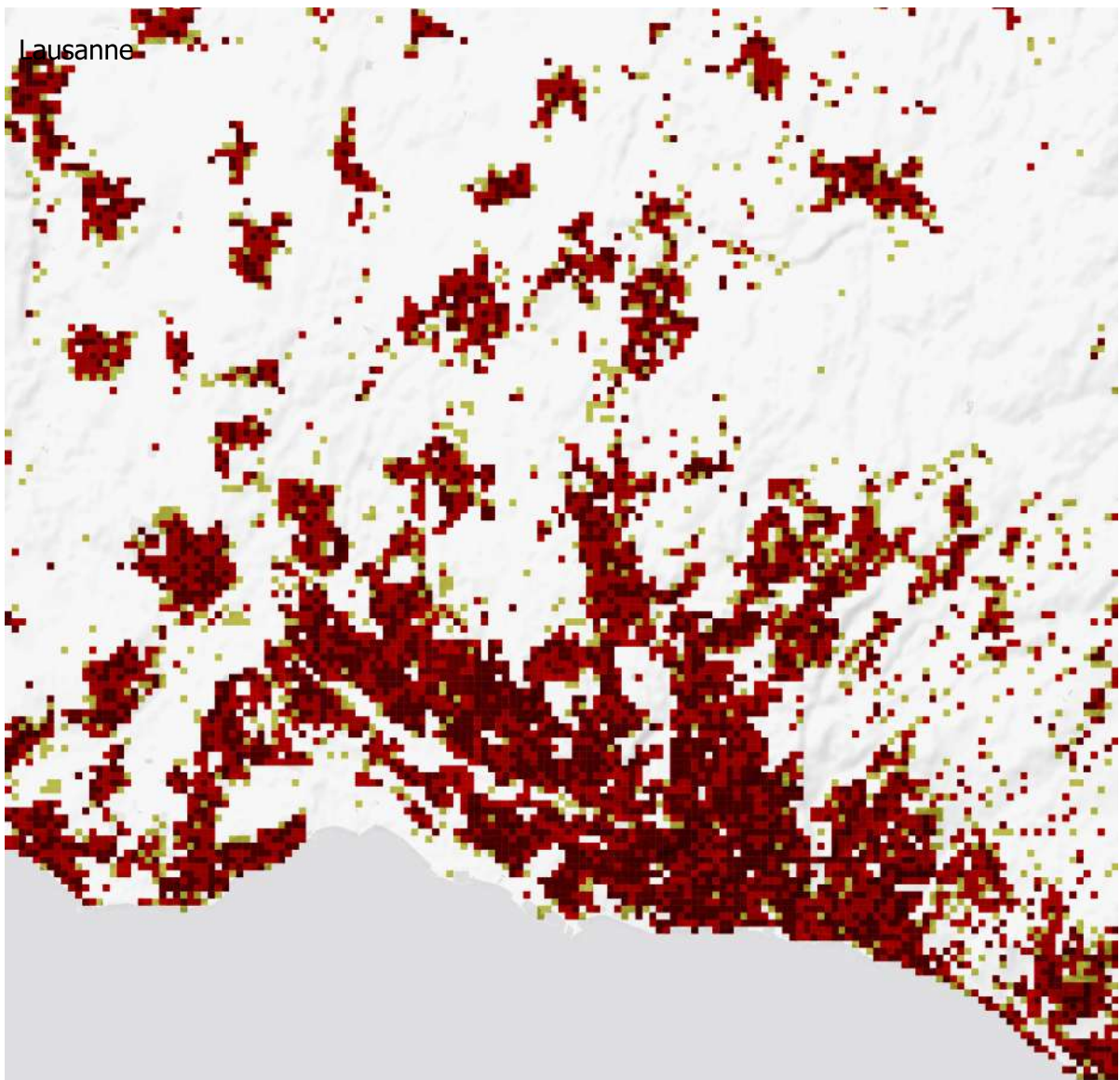
Bienne, Neuchâtel, Fribourg, Berne




A.3 Zoom sur l'évolution de la population âgée de 65 ans et plus




Lausanne







Neuropsychologie - NEST
Diagnostic territorial

 Cantons

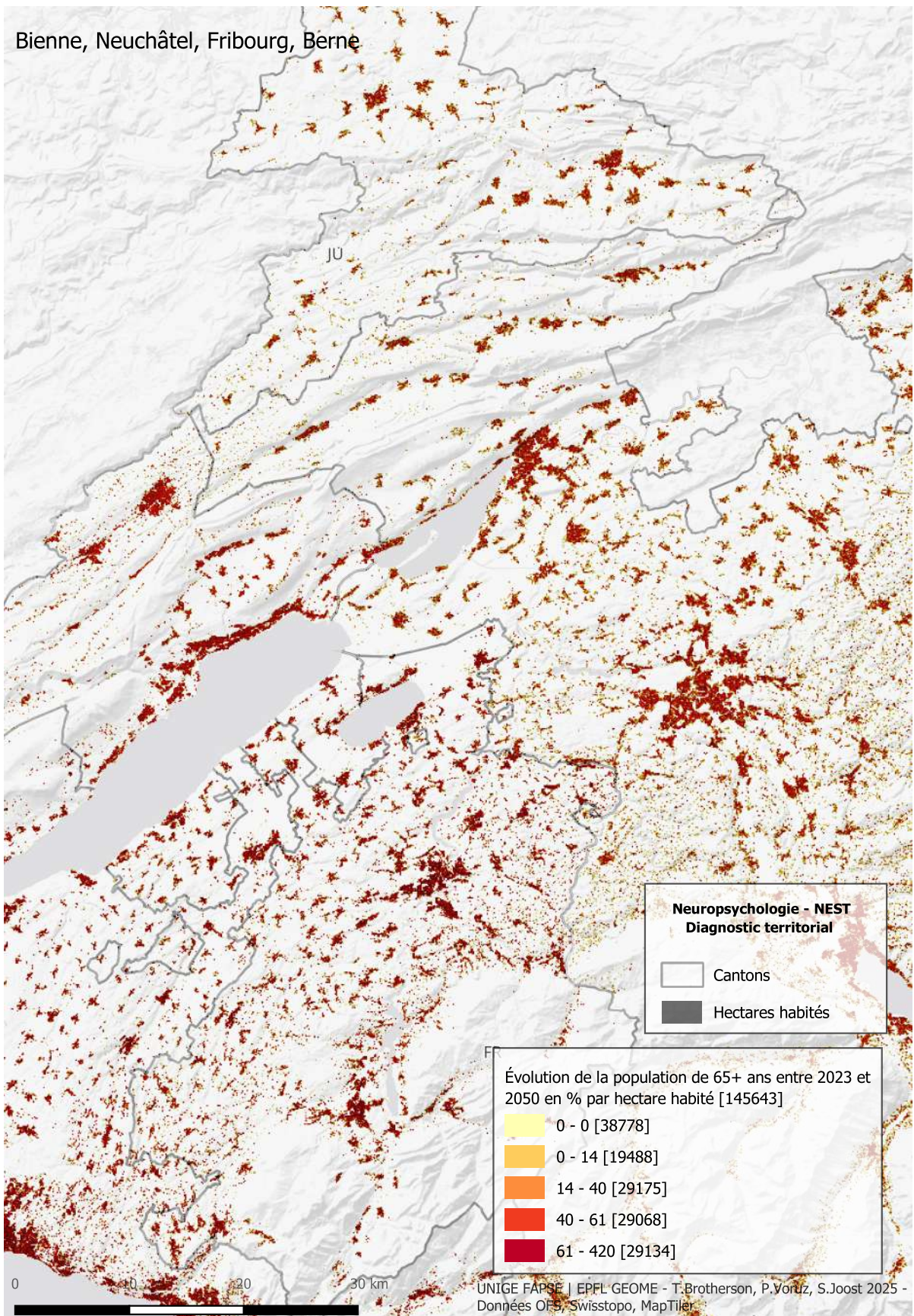
 Hectares habités

Évolution de la population de 65+ ans entre 2023 et 2050 en % par hectare habité [145643]

	0 - 0 [38778]
	14 - 40 [29175]
	40 - 61 [29068]
	61 - 420 [29134]



Bienne, Neuchâtel, Fribourg, Berne



Annexe B

Résultats du questionnaire

Cf. fichier joint AnnexeB_resultats_questionnaire.pdf

Annexe C

Registre des neuropsychologues

Cf. fichier joint AnnexeC_registre_neuropsychy.csv