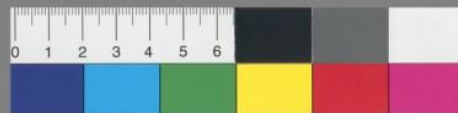


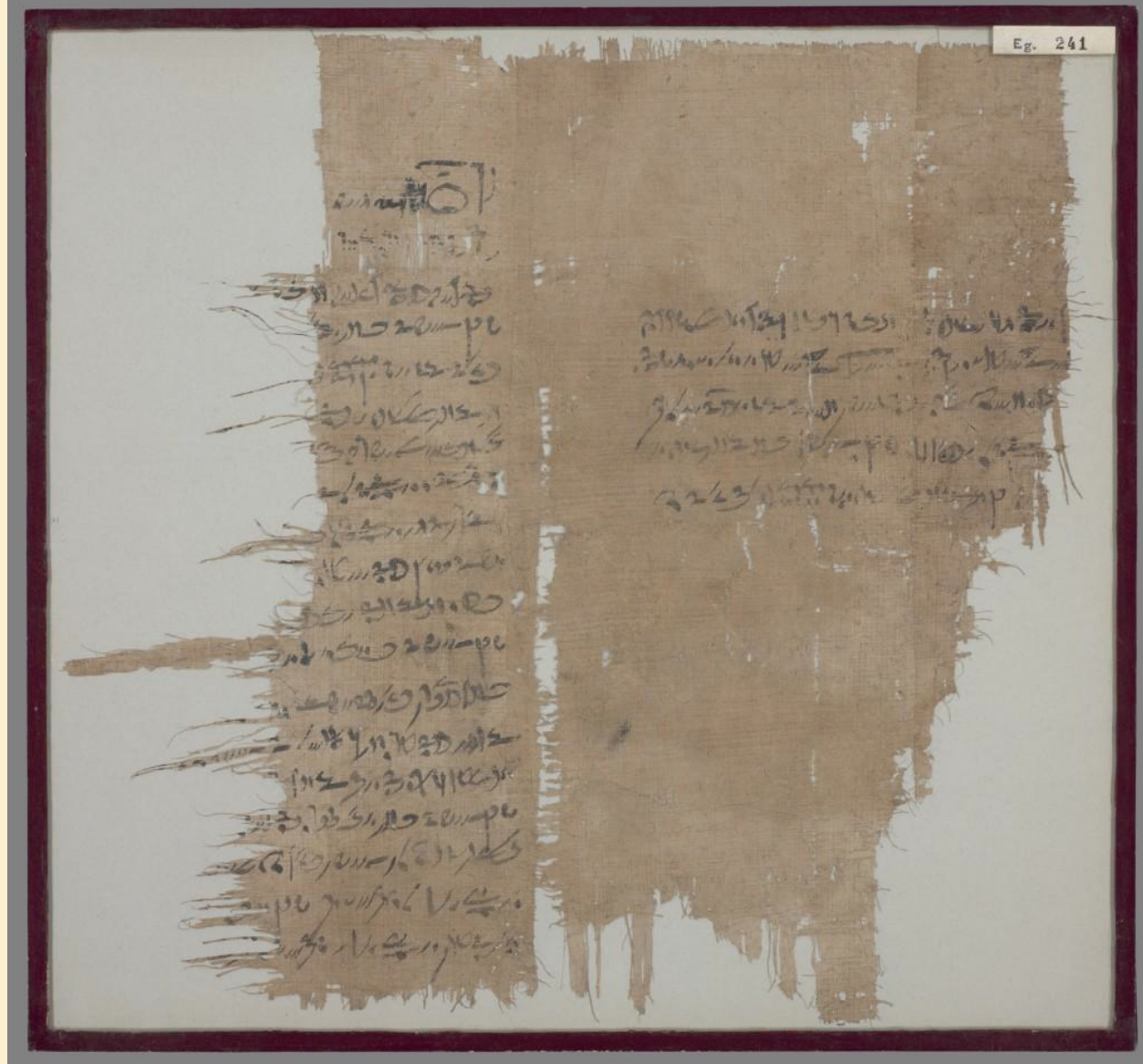
Handwritten text in Coptic script, likely a fragment of a papyrus document. The text is written in a dense, cursive style on a textured, aged surface. The script is arranged in approximately 10 horizontal lines, with some characters appearing to be in a different script or dialect, possibly indicating a mix of languages or a specific dialect. The ink is dark, and the background is a light, mottled brown.

Papyrus Prisse



Papyrus démotique

Règlement d'association  
Religieuse (BN).







© 2003 Musée du Louvre / Christian Décamps

Tablette d'écolier (Kémit)