

Day 2: Transporters and liver disease

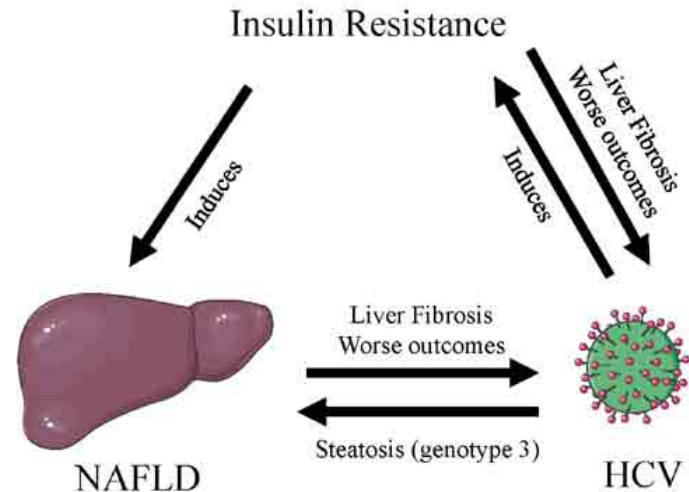
09:00 to 10:10	Transporters and liver disease
10:00 to 10:30	Coffee break
10:30 to 11:30	Transporters and liver imaging
11:45 to 13:00	Lunch
13:00 to 17:45	Easy walk, Glacier 3000, or ...
17:45 to 18:00	Coffee
18:00 to 19:00	Transporters and drug distribution
19:00	Drink and dinner

Session 1. Transporter and liver disease



- Hepatologist
- Laboratory of Virology
- University of Geneva
- EASL treasurer

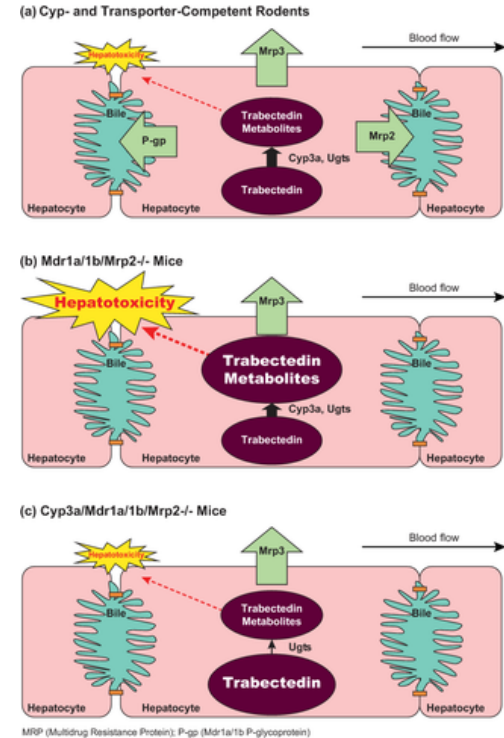
- **Research topic** Hepatic and extrahepatic manifestations associated with human hepatitis C virus (HCV) infection
- Chronic viral hepatitis and hepatocyte transporters
- **Medical University of Geneva**



■ Director ADME



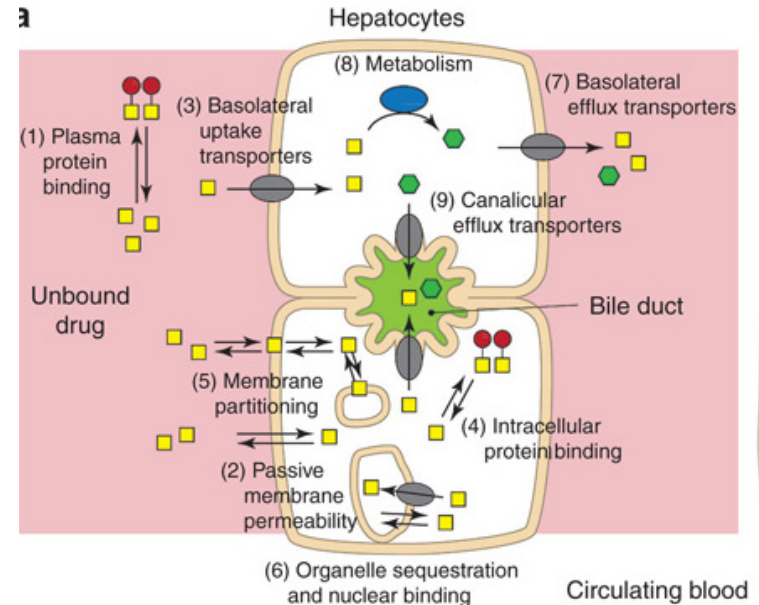
- Changes in activity of hepatocyte transporters in patients with renal impairment
- Hepatocyte Transporter Network





- Pharmacotherapy and Experimental Therapeutics
- School of Pharmacy, Chapel Hill

- **Research topic** All aspects of hepatocyte transporters including liver imaging
- Hepatic transporters and liver disease
- Hepatocyte Transporter Network



10:00 Coffee break

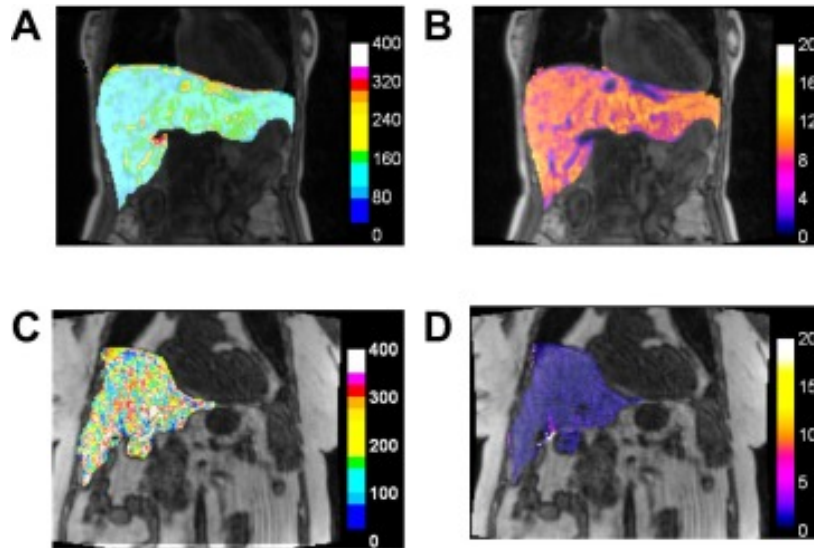
Session 2. Transporters and liver imaging



Bernard Van Beers

- Clinician and researcher in the department of Radiology, Clichy
- Collaboration with Catherine Pastor

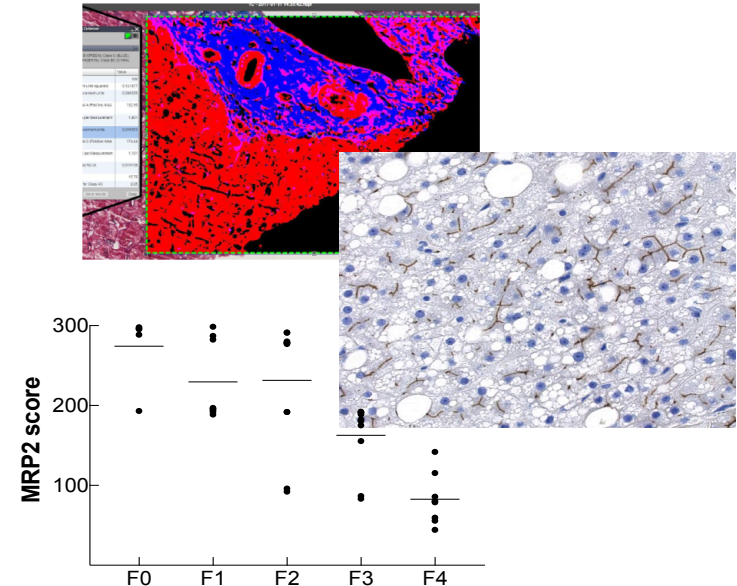
- **Research topic** Quantification of biomarkers to assess liver disease by MRI
- MRI with Gd-EOB-DTPA in chronic liver disease
- **Hepatocyte Transporter Network**

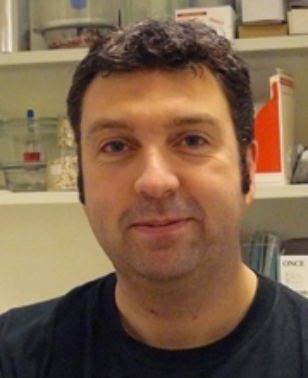




- MD and PhD
- Geneva University Hospital and University of Paris
- Collaboration with Bernard van Beers

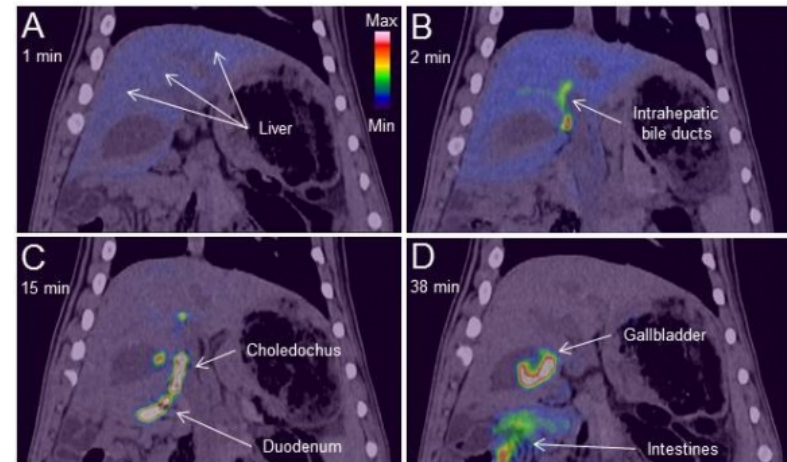
- Gd-EOB-DTPA transport across hepatocyte membranes correlates with transporter scores in chronic liver disease
- Hepatocyte Transporter Network





- Radiochemist and senior scientist at the Department of Nuclear Medicine and PET Centre in Aarhus

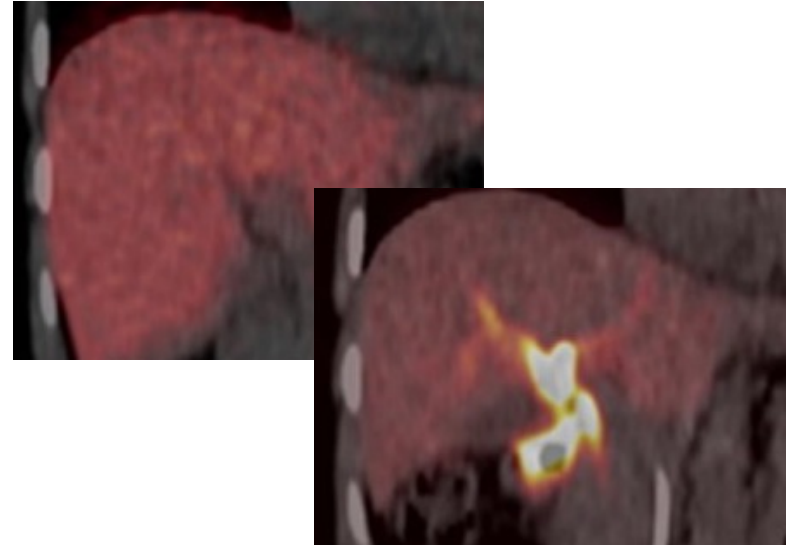
- Research topic** Development of PET tracers to study liver functions
- Bile acid tracer to analyse enterohepatic circulation by PET
- Hepatocyte Transporter Network





- Director of the Liver PET research group at the University Hospital of Aarhus

- **Research topic** Functional Molecular Imaging in Hepatology
- Conjugated bile acid tracer ^{11}C -CSar distribution in healthy humans and patients
- **Hepatocyte Transporter Network**



11:45 Lunch

To go to the Glacier 3000

Voucher available
at the desk or Catherine
64 CHF instead of 80 CHF
40 CHF with Swiss half pass



Free with your Free Access card

13:29 or 14:29
“Parc des sports”
near the hotel

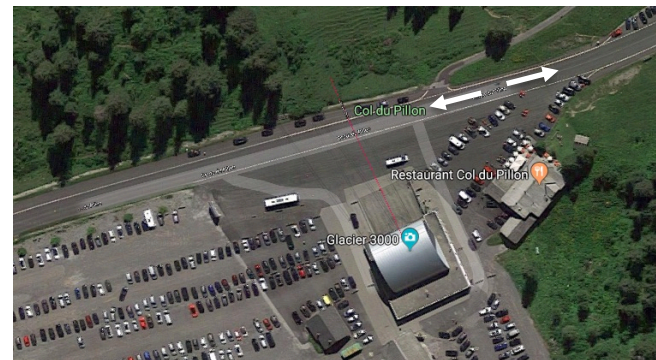


10 min

16:10 or 17:10
Last bus !



10 min





Easy walk to Vers-L'Église
13:30 Eurotel

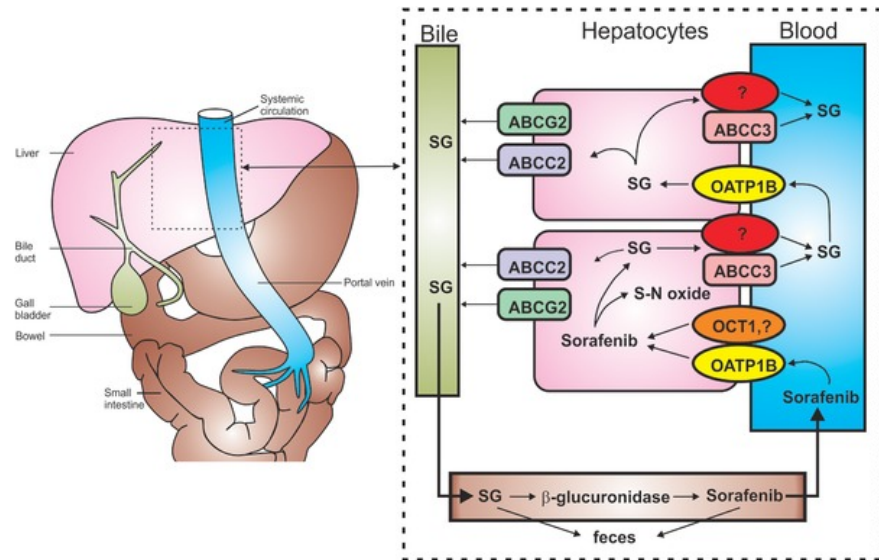
17h45 Coffee

Session 3. Transporters and drug distribution



- Pharmaceuticals and Pharmaceutical Chemistry
- Ohio State University

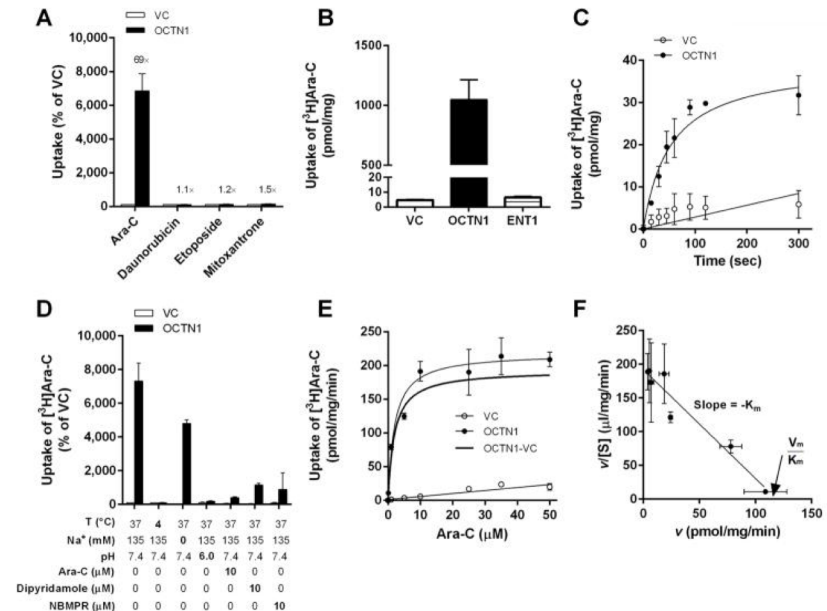
- **Research topic** Translational and clinical pharmacology of anti-cancer agents
- Sorafenib metabolism, transport, and enterohepatic recycling
- Hepatocyte Transporter Network





- Pharmaceuticals and Pharmaceutical Chemistry
- Ohio state University

- **Research topic** Contribution of solute carriers to chemotherapy
- Strategies to reduce Solute Carrier-mediated toxicity
- Hepatocyte Transporter Network

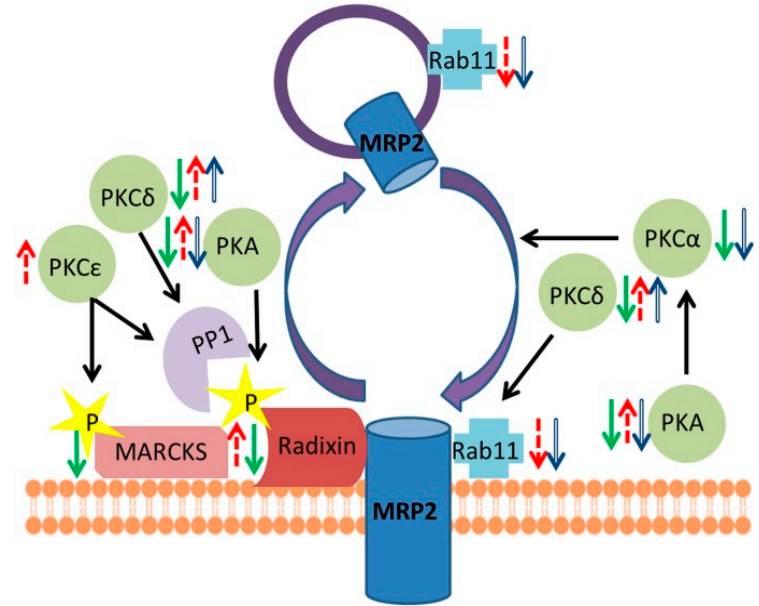




Nathan Cherrington

- Centre for Toxicology
- University of Arizona, Tucson

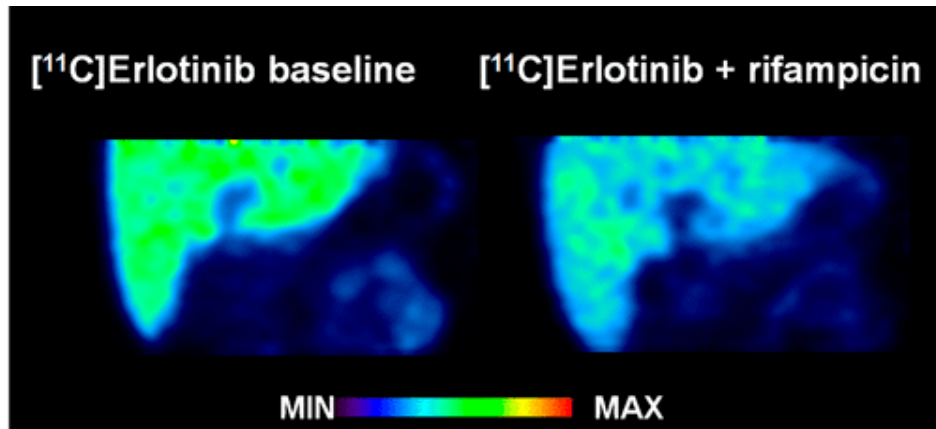
- **Research topic** Nonalcoholic Fatty Liver Disease and hepatocyte transporters
- Multiple Mechanisms of ADME Phenoconversion in NASH
- Hepatocyte Transporter Network





- Department of Clinical Pharmacology
- Medical University of Vienna

- **Research topic** Transporters and preclinical and clinical PET imaging
- OATP2B1-mediated hepatic uptake of erlotinib assessed with PET imaging
- Hepatocyte Transporter Network

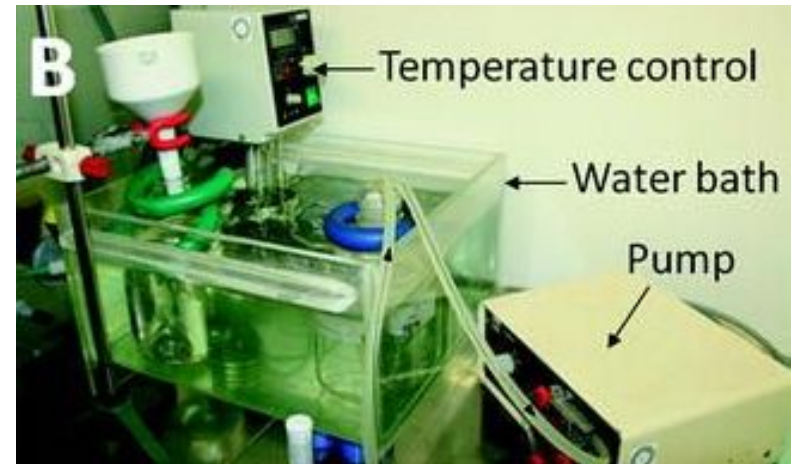




- Head of the Siegfried Weller Institut für Unfallmedizinische Forschung, Tübingen

Research topics

- Expert in the isolation of human hepatocytes
- [PubMed](#)



19:00 Drink and Swiss menu

