

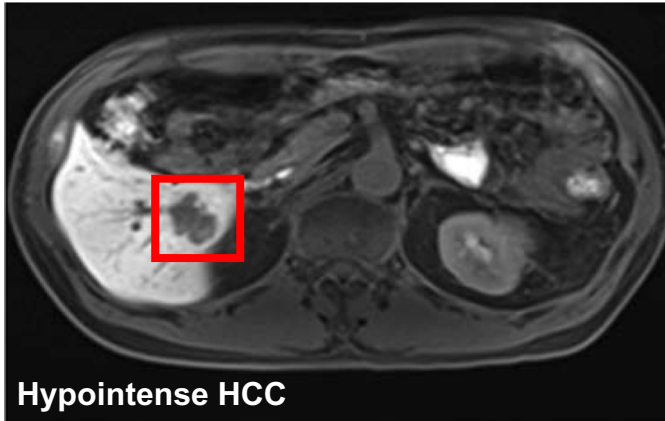


# Gd-EOB-DTPA transport across hepatocyte membranes and transporter scores in chronic liver disease

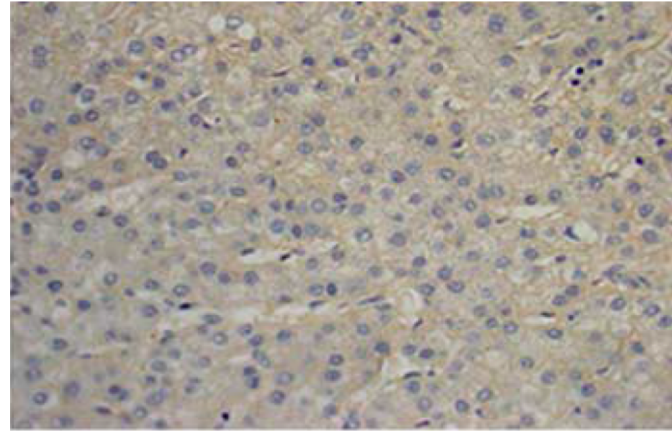
Catherine M PASTOR, MD, PhD  
catherine.pastor@unige.ch

# EOB-DTPA in hepatocellular carcinomas

No EOB-DTPA uptake  
into tumour cells

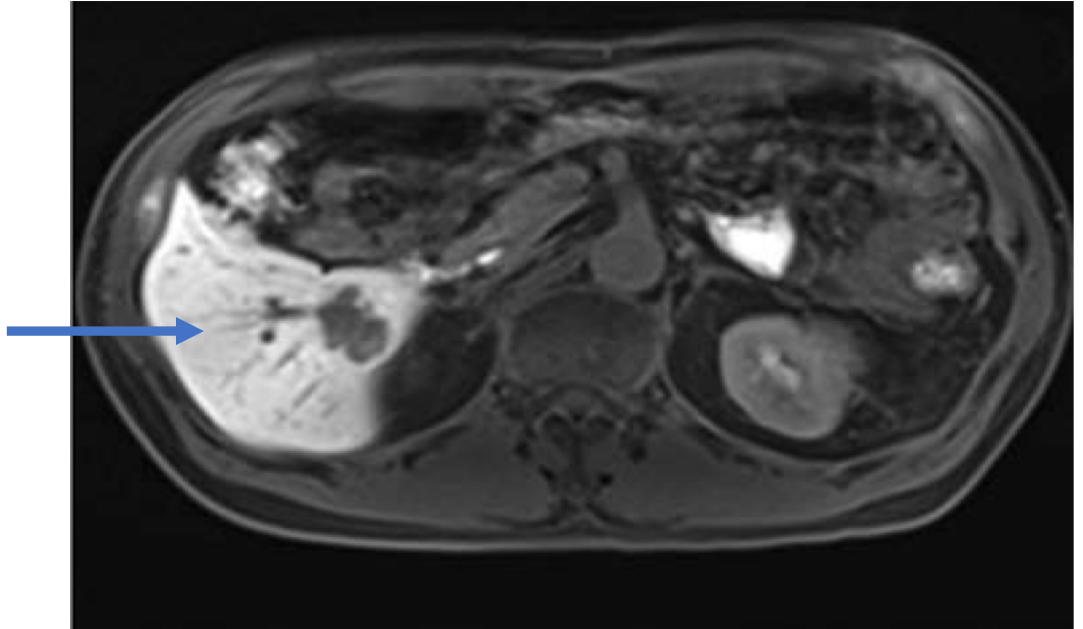


No OATP1B3 expression in  
the lesion



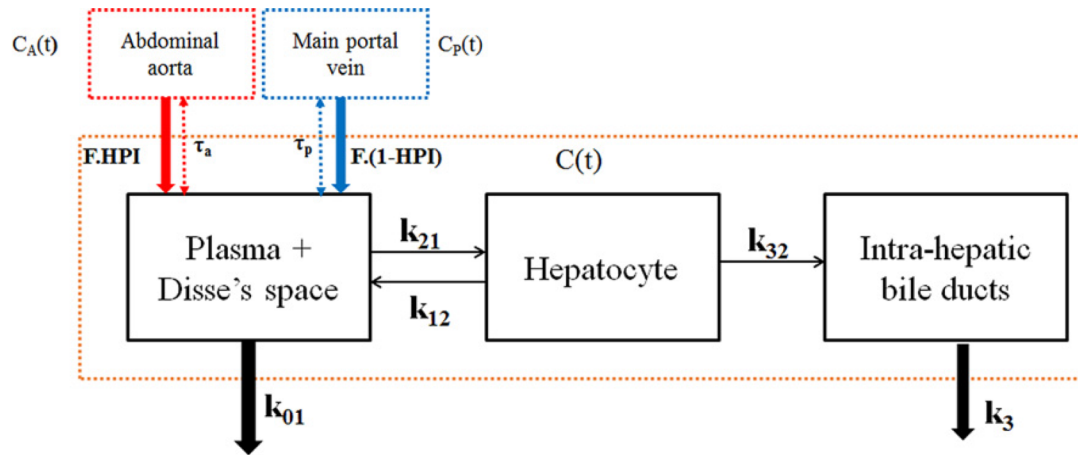
➡ Drugs similar to EOB-DTPA are unlikely to enter into tumour cells

**Expression of OATP1B3  
and MRP2 in  
surrounding parenchyma?**



# EOB-DTPA distribution in livers with chronic liver disease

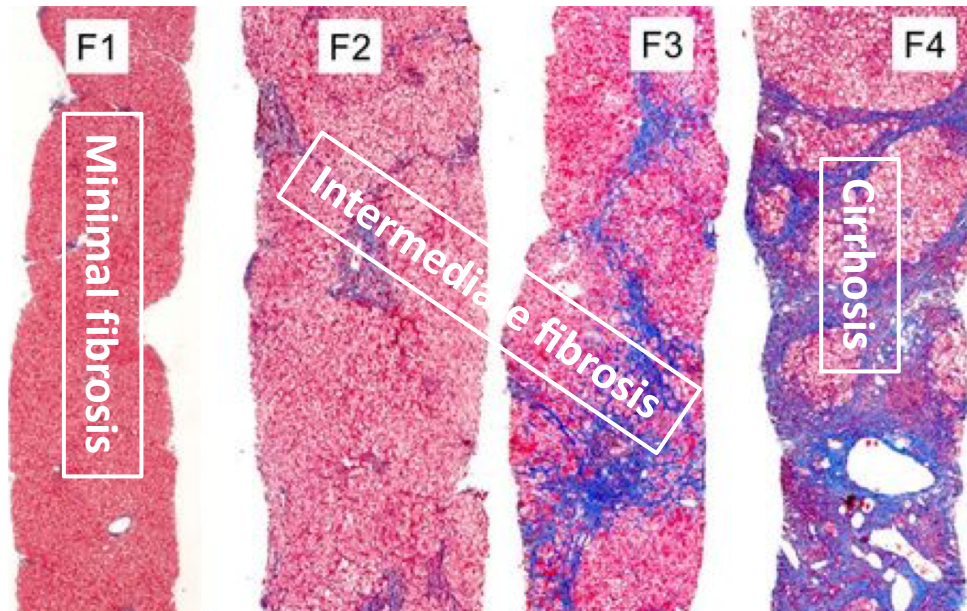
- 42 patients had MRI with EOB-DTPA and liver biopsies
- We used a dual-input three-compartment model to quantify EOB-DTPA clearances across OATPs, MRP2, and MRP3
- First, patients were grouped according to liver fibrosis



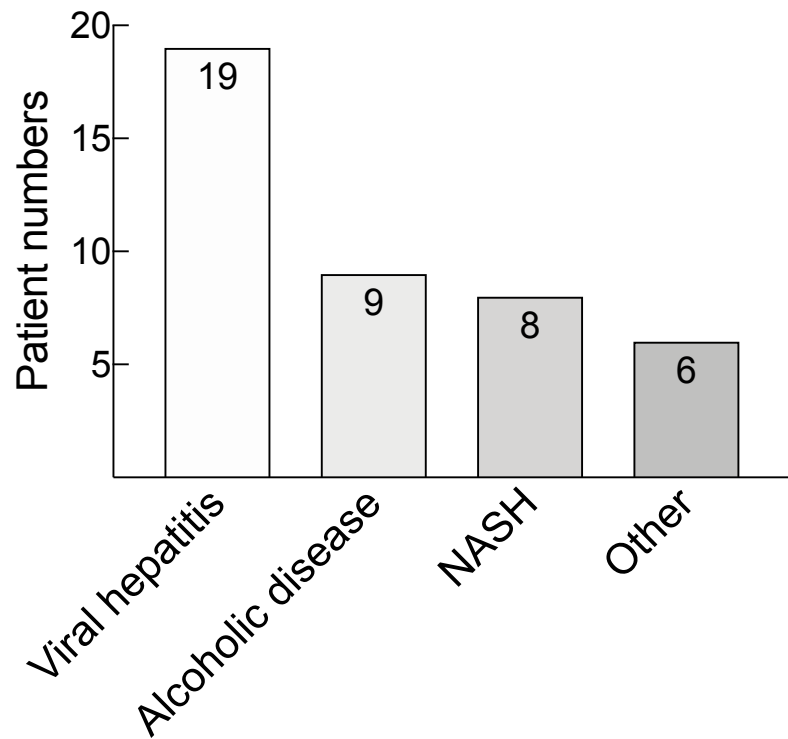


# EOB-DTPA clearances and fibrosis expansion

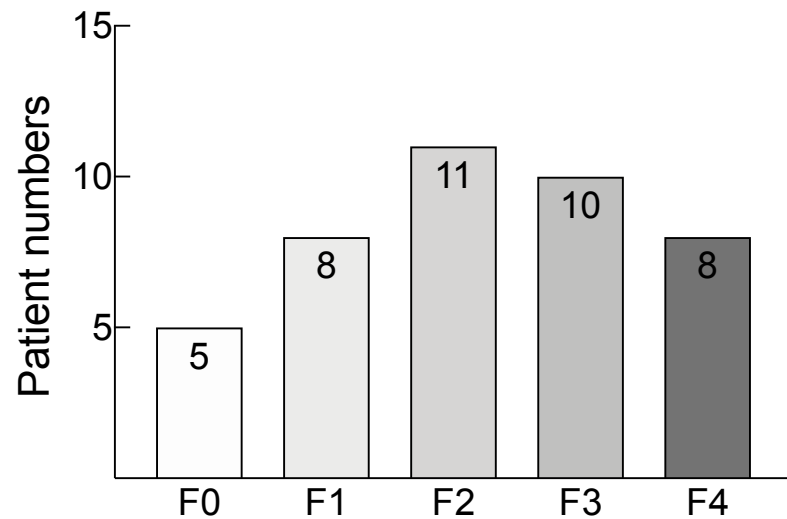
- Liver fibrosis estimated by the METAVIR score



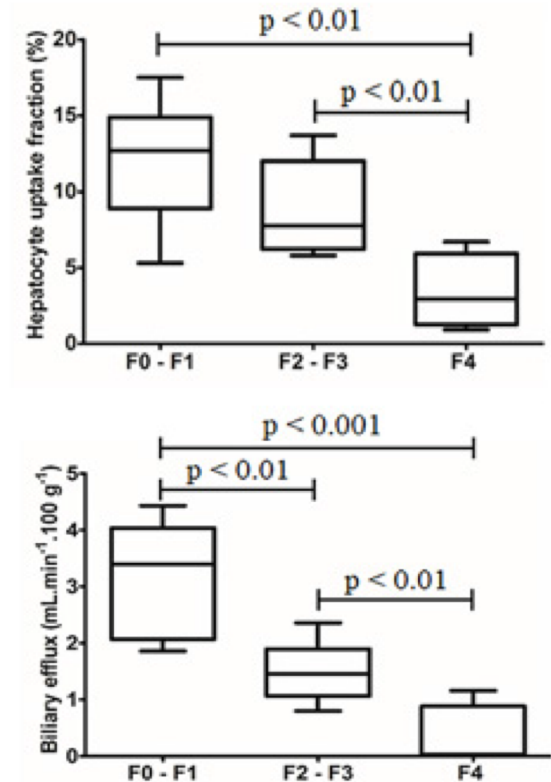
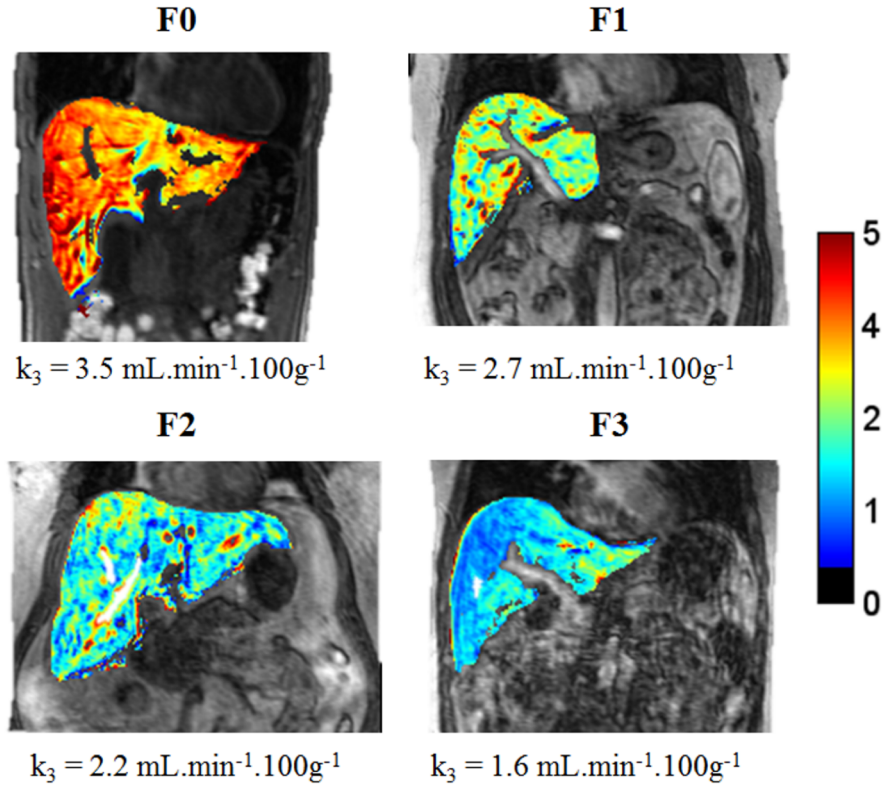
**Aetiology**



**METAVIR score**

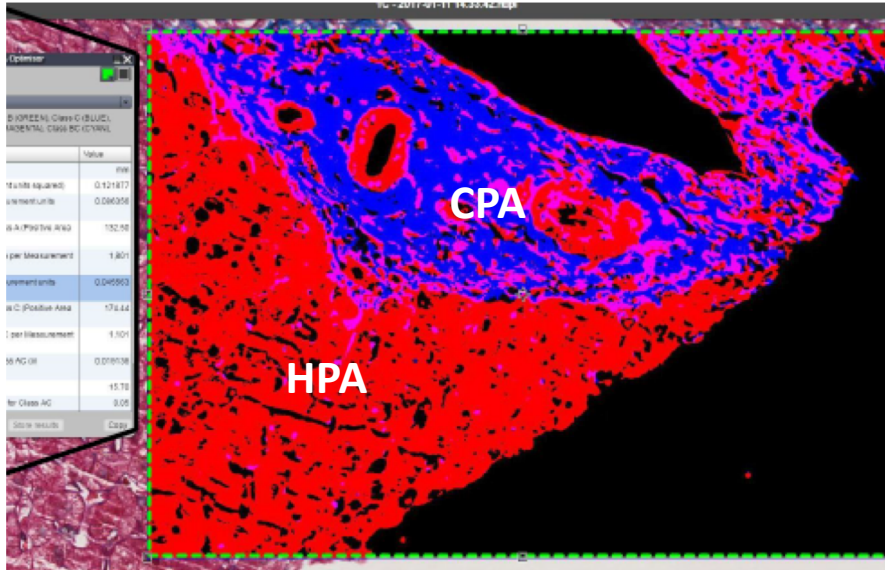


## EOB-DTPA biliary clearances ( $\text{mL} \cdot \text{min}^{-1} \cdot 100 \text{ g}^{-1}$ )

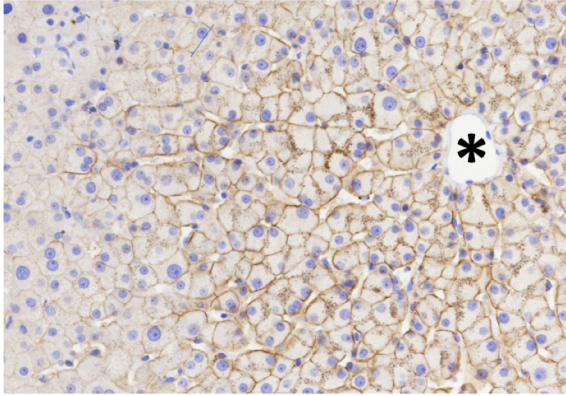


# **Correlation between EOB-DTPA clearances and new transporter scores**

# Estimation of residual hepatocytes

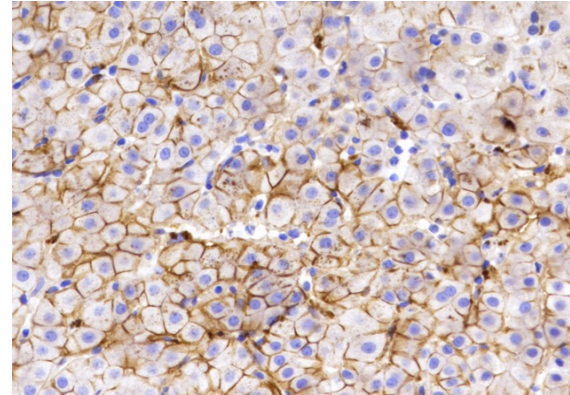


- Morphometric analysis
- Mean collagen area (CPA, %)
- Mean hepatocyte area (HPA, %) =  $100 - \text{CPA}$

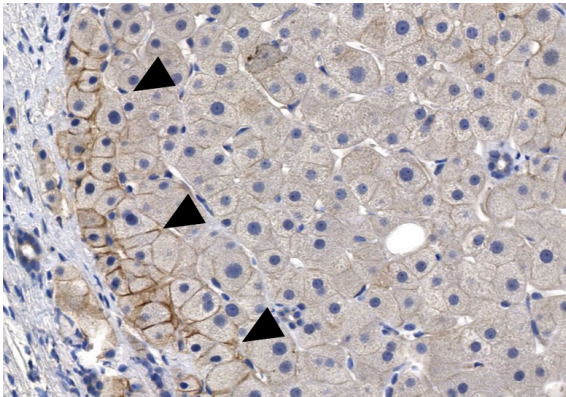


Score 3  
Low  
centrolobular

## OATP1B1/B3 expression



Score 1  
Lobular  
expansion

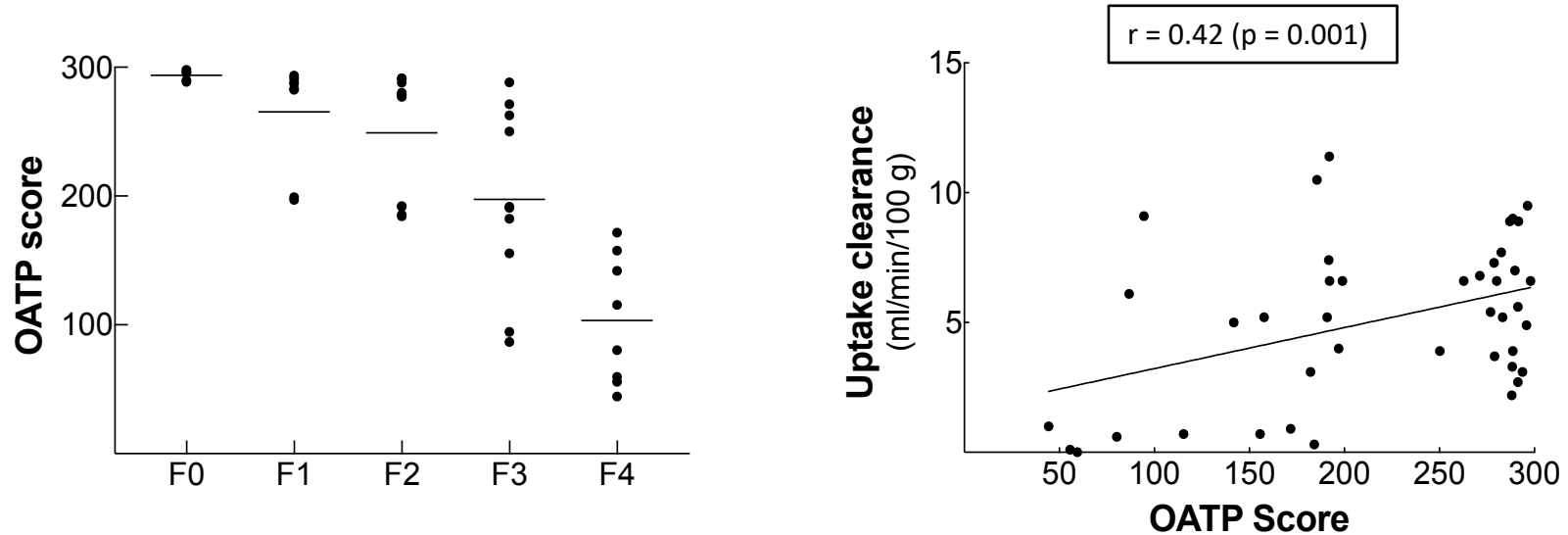


Score 2  
Progressive  
expansion

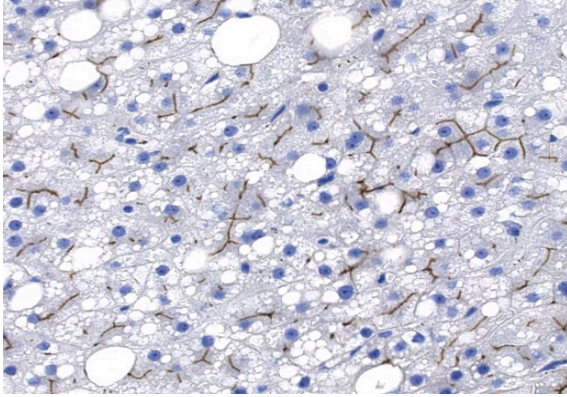
Transport score: (1,2, or 3) x HPA



# OATP1B1/B3 transport score correlates to uptake clearance

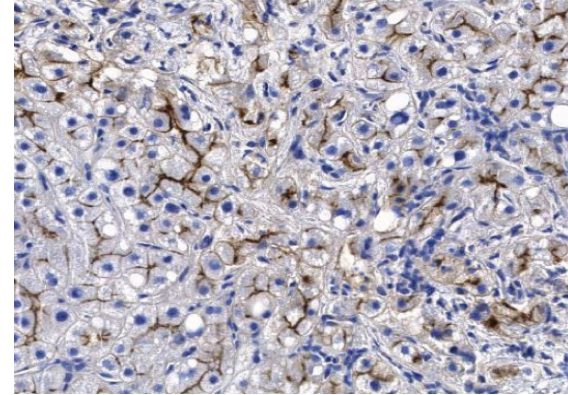


➡ For drugs similar to EOB-DTPA, uptake clearance should be related to residual hepatocytes and OATP1B1/B3 expression

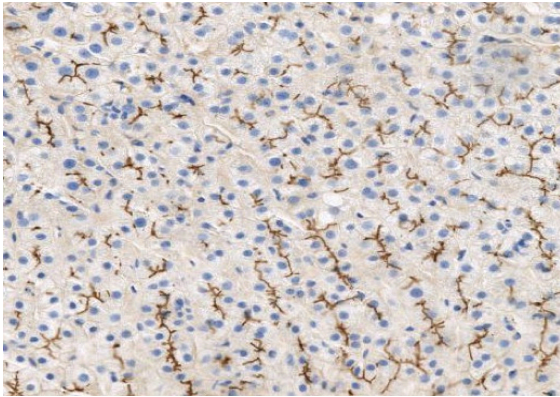


Score 3  
Thin  
Regular,  
Panlobular

## MRP2 expression



Score 1  
Thick  
Irregular

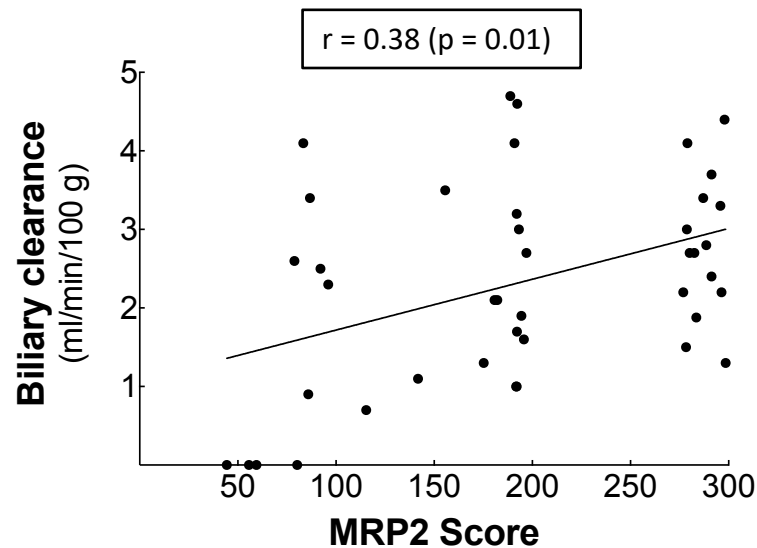
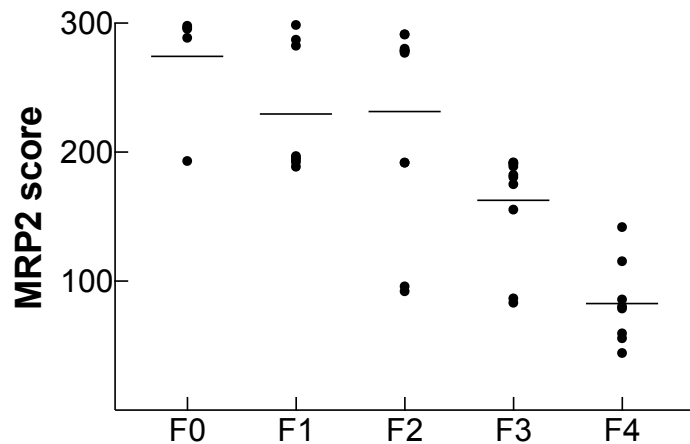


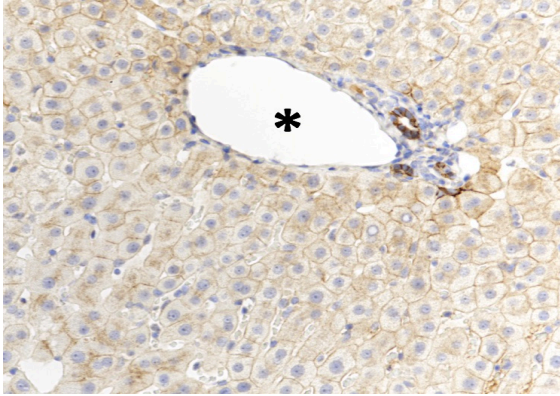
Score 2  
Thick

Transport score: (1,2, or 3) x HPA



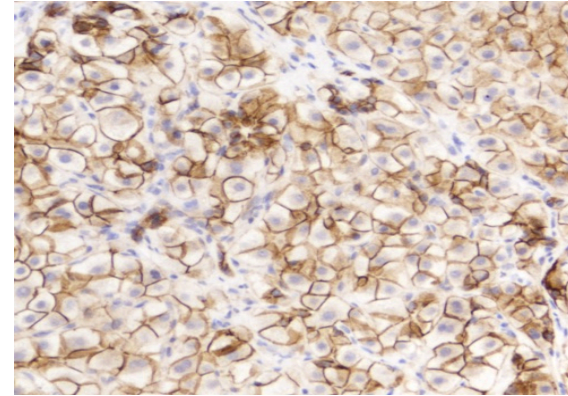
# MRP2 transport score correlates to biliary clearance



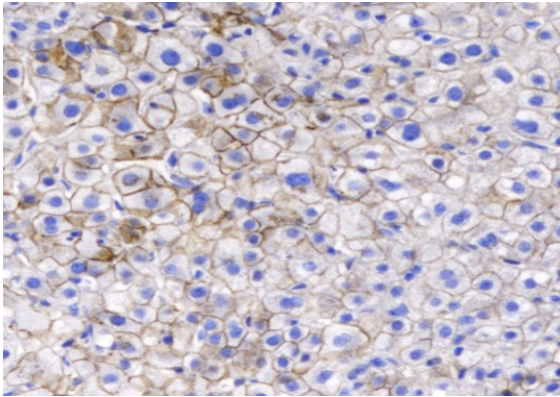


Score 3  
Minor  
Periportal

## MRP3 expression



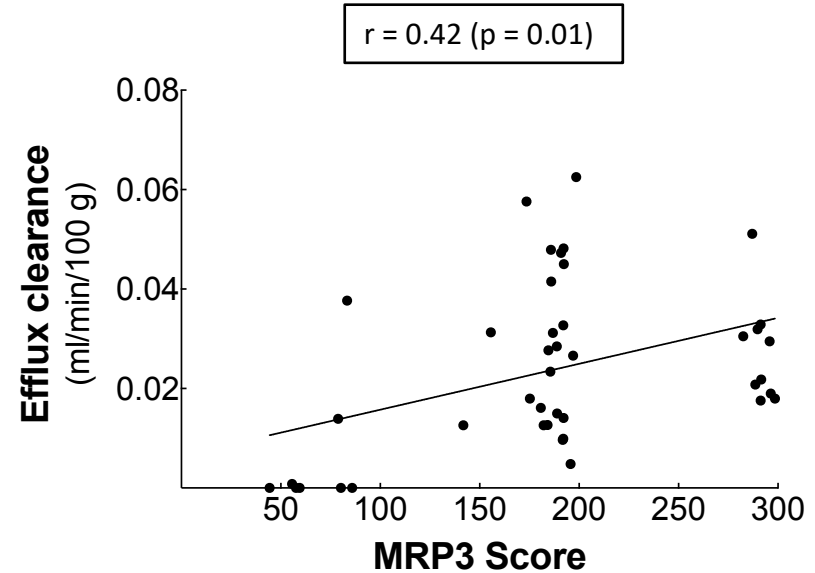
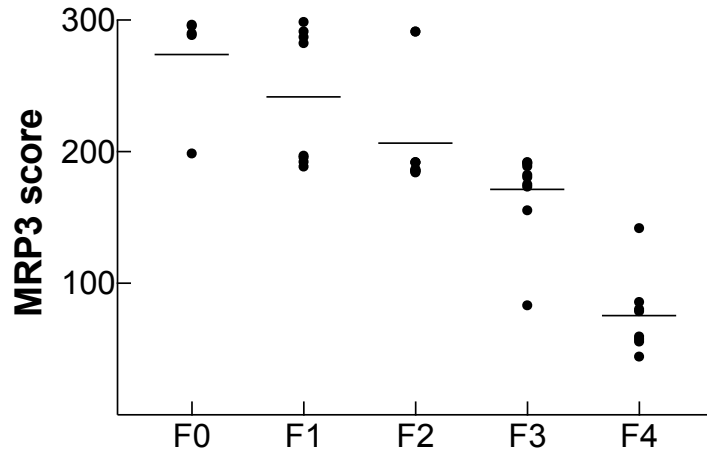
Score 1  
Panlobular  
Expansion



Score 2  
Focal  
Lobular  
Expansion

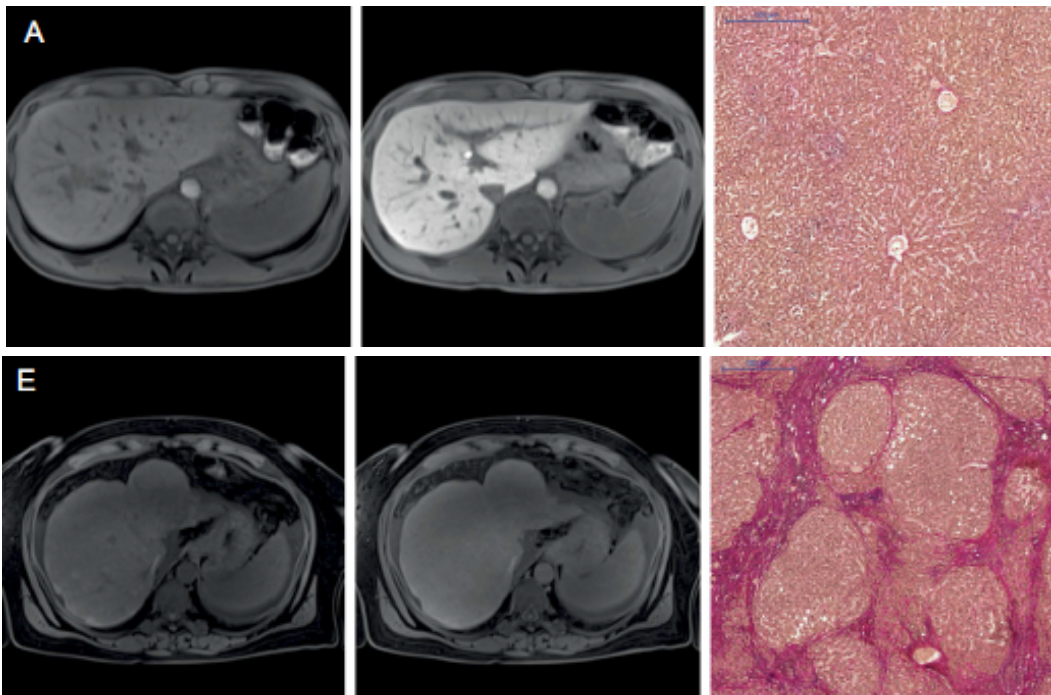
Transport score: (1,2, or 3) x HPA

# MRP3 score correlates to efflux clearance back to sinusoids

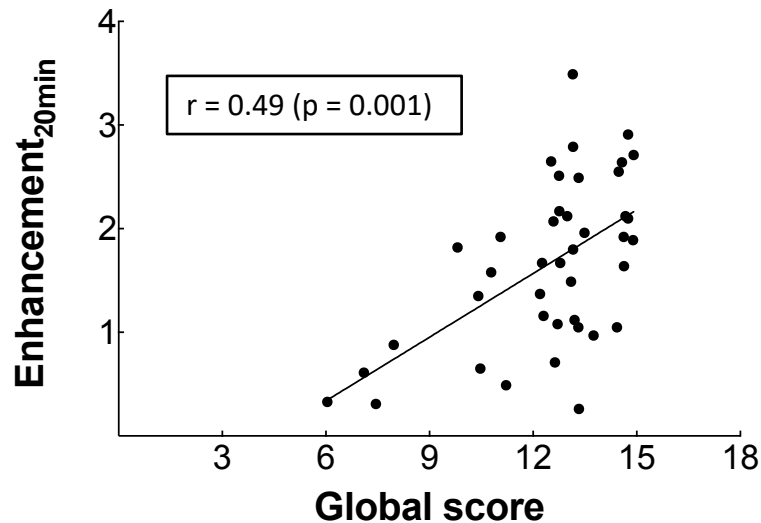


Pre-injection

20 min after  
EOB-DTPA injection



N Verloh, Sci Reports, 2015, 5, 15408



Global score of biopsy

$$0.093 \text{ HPA} + 0.55 \text{ OATP}_s + 0.13 \text{ MRP2}_s + 1.21 \text{ MRP3}_s$$

## Important points

- Quantification of residual hepatocytes
- With increasing liver fibrosis, OATP1B1/B3 expression extends from zones 3 to the entire lobule, while high MRP3 expression appears progressively in the entire lobule
- Pathological expression of MRP2 corresponds to a progressive thickening and irregular expression that remains visible in the entire lobule

## Important points

- OATP1B1/B3, MRP2, and MRP3 expression in residual hepatocytes determine EOB-DTPA clearances and decreased concentrations observed in patients with liver disease
- Similar changes might be anticipated with drugs close to EOB-DTPA