

THE FIRST YEAR – 2023-2024

TABLE OF CONTENTS

Welcome to the Department of English	1
The First Year at a Glance	2
BA1: English Literature.....	3
Lecture: Introduction to the Study of Literature	3
Analysis of Texts (AT) Travaux pratiques	4
Composition (Academic and Critical Writing Skills) Travaux pratiques	4
A Note on Grading – BA1 English Literature Programme	5
BA2: English Linguistics	6
Lecture: Introduction to English Linguistics.....	6
English Linguistics Travaux pratiques.....	6
A Note on Grading – BA2 English Linguistics Programme.....	7
Practical Language Travaux pratiques	7
Module à option.....	8
Signing up	8
Analysis of Texts (AT) TP Groups	9
Composition (Academic and Critical Writing Skills) TP Groups.....	9
English Linguistics TP Groups.....	10
Practical Language TP Groups.....	10
Faculty Information Session about On-Line Registration (IEL).....	10
The Writing Lab.....	11
Statement on Plagiarism	11
The Library for English Literature	12
AELLA.....	12
The Commission mixte.....	13
Members of the <i>Commission mixte</i> 2023-2024.....	13
Plan d'études de langue et littérature anglaises	15

Welcome to the Department of English

The Department of English is dedicated to the study of English language and literature in a wide range of historical and cultural contexts, from the origins of the language to the most contemporary forms of literature. There is at least one professor for each of the department's five principal areas of study: Anglo-Saxon and Medieval literature, Modern English literature of the sixteenth to the eighteenth century, Modern English literature of the eighteenth to the twentieth century, American literature, and Linguistics. In addition, the study of Contemporary literatures in English is supervised by a *maître d'enseignement et de recherche*. The department's distinguished record in research and scholarship serves the cause of good teaching: your instructors are also scholars actively engaged in defining their respective fields; as teachers, they are committed to making the study of English an intellectually challenging and rewarding experience.

This brochure describes the first year in English at the University of Geneva. It supplements information to be found in the *Programme des cours* of the Faculté des Lettres and the *Plan d'études* of the department. For easy reference, you will find a schematic summary of the BA *Plan d'études* at the end of this brochure.

When you first arrive in the English Department, it is likely that you'll feel confused and overwhelmed. Study at university level works in a very different way from study at *Collège, Gymnase or Lycée*. We work in different buildings across the city, for one thing, and for another, you'll be exposed to new and exciting, and very different ways of reading literature. However, all of us on the staff of the English Department are here to help you become part of this new environment. Do not hesitate to call on any of us: we have posted reception hours on the noticeboards and the departmental website when you may visit us in our offices, and we urge you to do so whenever you have a question. If the question relates to a specific class, address it to the instructor. Reception hours are not normally held during exam sessions. Questions about the programme in English may be addressed to the Director of the Department.

For administrative matters, our secretaries can assist you during the hours posted on the departmental website. You may also call the secretariat at 022.379.70.34. Questions about the BA programme in English may be addressed to the current Director of the Department, **Professor Simon Swift**.

The English Department, with the secretariat and the offices of teachers of English literature, is located on the second floor of the Comédie building at 12, boulevard des Philosophes (above the restaurant *Le Philanthrope*). The offices of teachers of English linguistics, in turn, are located on the seventh floor of the Landolt building at 2, rue de Candolle.

Classes will take place in various buildings during the renovation of the building known as “Bastions”. Please consult the Department’s website to identify their locations. We encourage you to consult the departmental website regularly for all sorts of current information, events, opportunities, and last-minute changes in the course schedule:

<https://www.unige.ch/lettres/angle>.

In addition, students are strongly encouraged to subscribe to the English department’s e-mail list. The link to subscribe, as well as to cancel or modify a subscription, can be found here:

<https://www.unige.ch/lettres/angle/fr/etudiants/inscription-au-mailing-list/>

Many books used in our classes are either ordered through the English book section of Librairie Payot, 7, rue de la Confédération, or can be ordered online (the correct edition and ISBN reference number will be indicated by your teacher). Other course readers can be ordered through the university’s printing service: polycopie.unige.ch. Your teachers will inform you where their book orders have been placed. There is a photocopying machine available for your use in our library, as well as a printer.

The First Year at a Glance

University classes begin a quarter of an hour after the time stated on the timetable, to allow students to change buildings as necessary. Students must nevertheless arrive punctually for the start of class.

The first-year curriculum in English is an integrated programme of introduction to English linguistics and to literary studies. It consists of the courses shown in the box on the next page, all of which, with the exception of the Writing Lab, are required.

BA1 and BA2 are required modules. Successful completion of BA1 is required before students can proceed to the advanced English Literature modules (BA4, BA5, BA6, BA7); successful completion of BA2 is required to advance to BA3 in English Linguistics.

Module BA1

- Introduction to English Literature
A year-long lecture course given by Prof. Simon Swift and Dr Martin Leer. Tuesday 10:00-12:00, Pont Rouge - Forum 211 in autumn and Athénée - Abeilles in spring.
- Analysis of Texts (AT): *Travaux Pratiques* (TP)
2 hours a week for the whole year. Six groups are offered.
- Composition (Academic and Critical Writing Skills): *Travaux Pratiques* (TP)
One hour a week for the whole year. Four groups are offered.
- A Writing Lab, open four half-days per week in Comédie 213.

Module BA2

- Introduction to English Linguistics
A year-long lecture course given by Dr Tabea Ihsane. Thursday 12:00-14:00, Pont Rouge - Forum 211.
- English Linguistics *Travaux Pratiques* (TP)
2 hours a week for the whole year. Four groups are offered.
- Practical Language *Travaux Pratiques* (TP)
2 hours a week for the whole year. Three groups are offered.

BA1: English Literature

The first-year programme in English literature (module BA1) consists of a weekly lecture course (2 hours), a class in textual analysis (2 hours) and a class in composition/critical writing (one hour).

Lecture: Introduction to the Study of Literature

Tuesday 10:00-12:00	Simon Swift	Pont Rouge - Forum 211 in autumn
Tuesday 10:00-12:00	Martin Leer	Athénée - Abeilles in spring

The BA1 lecture course introduces students to the reading of English literature and the writing about it. It is divided into four parts over two semesters: the first on poetry and the essay taught by Simon Swift; the second on drama and narrative taught by Martin Leer. Each weekly lecture is supported by an Analysis of Texts class where issues raised in the lecture can be discussed by students with their tutor.

In the first semester we will begin to think about what is at stake in the reading of a poem in English through close examination of a range of poetic examples. We will consider the essay as a form that has a history, ask what essays are trying to do, and what reading them can teach us about how to write them.

In the second semester some of the essential features of drama will be introduced through a close reading of William Shakespeare's *Hamlet*, Folger Shakespeare Library (Simon & Schuster, updated, bigger edition, 2012) ISBN 978-1-4516-6941-1 (copies are available from Payot and online). Narrative will be studied through a close reading of Virginia Woolf's *Mrs Dalloway* (Norton Critical Edition) ISBN 978-0-393-65599-5 (copies are available from Payot and online).

Students must order and buy the BA1 Lecture Course Reader "Introduction to the Study of Literature" from polycopie.unige.ch before classes begin. It takes 48 hours for the order to be processed and ready to collect from Uni-Mail. The reader costs approximately 15 CHF.

The lecture course begins on **Tuesday, 26 September 2023**.

Analysis of Texts (AT) *Travaux pratiques*

The groups of Analysis of Texts are devoted to close study of the literary texts listed in the programme for the Introduction to Literature lecture course. Each group is taught by one instructor per semester, who assigns written work and administers written tests. The group provides a forum for discussion and addresses questions of textual analysis for a two-hour period each week.

The Analysis of Texts TP groups are scheduled on **page 9** and begin on **Tuesday, 26 September 2023**.

Composition (Academic and Critical Writing Skills) *Travaux pratiques*

Students will need to learn the conventions of academic writing, since these are a vital contribution to the grade of their written work.

Active participation in class and further study and assignments at home are required. An attestation certifying satisfactory completion of this course is required for completion of the BA1 module.

Required texts:

(1) A textbook (*Rules for Writers, 10th, NEW* edition) that will be sold in class. Please have the exact amount (**34 francs**) with you on the first day of classes: Tuesday 26 September (Groups 1 and 2) and Friday 29 September (Groups 3 and 4).

(2) A print on-demand reader. To order a copy

- Go to polycopie.unige.ch/en/ (You will be asked for your password)
- In the Search bar, type “Fachard”
- Select the reader entitled “Composition, Autumn 2023”
- Click on “Add to Cart”
- Click on “Proceed to checkout” and complete your order.

The Composition (Academic and Critical Writing Skills) TP groups are scheduled on **page 9** and begin on **Tuesday, 26 September 2023**.

A Note on Grading – BA1 English Literature Programme

Each student will be evaluated as follows during the year: an in-class mid-term assessment and a take-home essay in the Autumn semester; and through a take-home attestation essay, a four-hour test under controlled conditions and a second take-home essay in the Spring semester. The test in the Spring covers everything studied till then. The grade for module BA1 will comprise the mid-term assessment and take-home essay in the Autumn, together with the second take-home essay and the test in the Spring. Successful completion of all research tasks and assessments is required to gain the necessary credits for module BA1.

Only students who receive an overall grade of 4.0 or more will qualify for modules BA4-7. Students who receive a grade of less than 4.0 will have the **option** to re-take the final exam during the September exam session. Students who fail this second attempt at BA1 are advised to retake the entire module in the following year (third and final attempt). Those students who have failed in June but do not wish to re-sit an exam on the entire module in the September examination session can directly retake all classes and *contrôles continus* in the following academic year (this will then count as their second attempt at BA1).

Participation in class discussion is an essential part of the learning process. For this reason, the amount and quality of your contributions to class discussion will be taken into account in the grades given for each written exercise. Regular attendance is required and is a condition for permission to take the written examinations of the *contrôle continu*.

BA2: English Linguistics

The first year programme in English linguistics (module BA2) consists of a lecture course, related *Travaux Pratiques* (TP), and Practical Language.

Lecture: Introduction to English Linguistics

Thursday 12:00-14:00 Tabea Ihsane Pont Rouge - Forum 211

This course provides an introduction to linguistics as “the scientific study of language.” After a short introduction to general issues – the aims and methods of linguistics, a brief overview of the different fields in linguistics – the lectures will concentrate on the core areas of linguistics: semantics/pragmatics (meaning), phonetics/phonology (sounds and sound patterns), morphology (word formation), and syntax (sentence formation). This implies acquiring the descriptive tools and illustrating how these descriptive tools can be applied to the study of the English language. The final section of the course will focus on one area of the grammar of English, the auxiliary system, and we will study this topic against the general background outlined in the first part of the course.

Material for the lecture course and the TP in English linguistics will be made available on the course website (see <https://moodle.unige.ch>).

The lecture course begins on **Thursday, 21 September 2023**.

English Linguistics *Travaux pratiques*

The *travaux pratiques* (TP) are “hands-on” sessions designed to reinforce and practise the notions introduced in the lecture course “Introduction to English Linguistics.” They also focus on the acquisition of specific skills, such as examining linguistic data, identifying linguistic problems, solving the problems using linguistic tools, and writing short essays.

Material for the lecture course and the TP in English linguistics will be made available on the course website (see <https://moodle.unige.ch>).

The English linguistics TP groups are scheduled on **page 10** and begin on **Monday, 25 September 2023**.

A Note on Grading – BA2 English Linguistics Programme

The English Linguistics programme is divided into four parts. The content of each section provides the basis for a written test in the form of exercises and short essays. For the last test, students will be asked to write a complete essay. The grade for module BA2 will consist of the average of the grades obtained in the four tests. This average must equal 4.0 or more in order for the student to qualify for modules BA3 and BA7. Students who receive a grade of less than 4.0 in the *contrôle continu* will have the **option** to be examined again on the entire BA2 module in the September examination session. Students who fail that exam (their second attempt at BA2) are advised to retake all classes and *contrôles continus* in the following academic year (third and final attempt). Those students who have failed in June but do not wish to re-sit an exam on the entire module in the September examination session can directly retake all classes and *contrôles continus* in the following academic year (this will then count as their second attempt at BA2).

Practical Language *Travaux pratiques*

Practical Language classes use texts and other media on a variety of topics related to the cultures of the English-speaking world to help students consolidate and improve their proficiency in grammar, vocabulary and language use. In addition to language practice, the course aims to introduce a basic descriptive framework for the English language. This is designed to enable students to develop their own mastery of the language independently, and to be useful for those who aim to go on to teach.

Active participation in class and further study at home are required. Assessment is continuous during the academic year. An attestation certifying satisfactory completion of this course is required for completion of the BA2 module.

Required course material:

(1) a reader, to be purchased at polycopie@unige.ch; (2) Douglas Biber et al., “Longman Student Grammar of Spoken and Written English” (Pearson, 2013). Copies of this book will be available for purchase at Payot – Rive Gauche (rue de la Confédération 7, 1204 Geneva); price: 35.90 with student discount.

The Practical Language TP groups are scheduled on **page 10** and begin on **Wednesday, 27 September 2023**.

Module à option

Students who choose subjects other than English as their two main branches may take either BA1 or BA2 as their 15th BA module (*module à option*).

Signing up

All students must attend **each of the six courses listed above**: the two lecture courses in Literature and Linguistics; two *travaux pratiques* groups (Analysis of Texts TP and Composition TP) attached to the BA1 lecture course; and two *travaux pratiques* groups (English Linguistics TP and Practical Language TP) attached to the BA2 lecture course.

Visits to the Writing Lab are highly recommended, but voluntary except when required by an instructor. Lecture courses and the Writing Lab do not require separate sign-ups, but you **MUST** sign up for **ONE** of **EACH** of the *travaux pratiques* groups shown below and on the next page. Your registration will not be complete until you have signed up for **all four**. Movement between groups is **not** allowed.

Sign-up for all groups will be done **online** via the following link – which you will also find in the right-hand column of our department homepage – from

Monday, 18 September, 18:00 until Wednesday, 20 September, 18:00:

<https://www.unige.ch/lettres/angle/inscription-tp>. You will be able to access the results of the sign-up using that same link on **Friday, 22 September at 12:00**.

If you have questions about registration, you can ask them during our ***permanence*** on **Tuesday, 19 September 2023** between **17:00** and **18:30**, in room **Phil 102**.

The person in charge of sign-ups is **Alexandre Fachard**. All questions are to be addressed to him by email: Alexandre.Fachard@unige.ch

Analysis of Texts (AT) TP Groups

The *travaux pratiques* in AT (2 hours/week) are organised into six groups. Students should sign up by ranking all groups in order of preference; we will endeavour to place students in one of their preferred groups. If you have a compulsory class in your second discipline on Tuesdays, 10-12 (i.e., the same time as the BA1 lecture course) you should sign up for an AT group meeting on Thursday.

32E0270	TP	Analysis of Texts – Group 1	Enseignants Lettres	AN	Ma 14-16	PHIL 012
32E0270	TP	Analysis of Texts – Group 2	Enseignants Lettres	AN	Ma 16-18	IFAGE 407
32E0270	TP	Analysis of Texts – Group 3	Enseignants Lettres	AN	Me 8-10	PHIL 206
32E0270	TP	Analysis of Texts – Group 4	Enseignants Lettres	AN	Me 10-12	PHIL 214
32E0270	TP	Analysis of Texts – Group 5	Enseignants Lettres	AN	Je 16-18	IFAGE 405
32E0270	TP	Analysis of Texts – Group 6	Enseignants Lettres	AN	Je 16-18	IFAGE 406

Composition (Academic and Critical Writing Skills) TP Groups

The *travaux pratiques* in Composition (one hour a week) are organised into four groups. Students should sign up by ranking all groups in order of preference; we will endeavour to place students in one of their preferred groups.

32E0271	TP	Composition – Group 1	Enseignants Lettres	AN	Ma 12-13	IFAGE 406
32E0271	TP	Composition – Group 2	Enseignants Lettres	AN	Ma 13-14	IFAGE 406
32E0271	TP	Composition – Group 3	Enseignants Lettres	AN	Ve 10-11	Maraîchers 201
32E0271	TP	Composition – Group 4	Enseignants Lettres	AN	Ve 11-12	Maraîchers 201

English Linguistics TP Groups

The *travaux pratiques* in English linguistics (2 hours/week) are organised into four groups. Students should sign up by ranking all groups in order of preference; we will endeavour to place students in one of their preferred groups.

32E0020	TP	English Linguistics – Group 1	Enseignants Lettres	AN	Lu 8-10	UOG - Amphi
32E0020	TP	English Linguistics – Group 2	Enseignants Lettres	AN	Lu 10-12	UOG - Amphi
32E0020	TP	English Linguistics – Group 3	Enseignants Lettres	AN	Lu 12-14	UOG - Amphi
32E0020	TP	English Linguistics – Group 4	Enseignants Lettres	AN	Ma 8-10	UOG - Amphi

Practical Language TP Groups

The *travaux pratiques* in Practical language (2 hours/week) are organised into three groups, listed below. Group 1 is listed twice because it is taught in different classrooms in the autumn (Room SCII 457) and spring (Room SIP 3H8). Students should sign up by ranking all groups in order of preference; we will endeavour to place students in one of their preferred groups.

32E0272	TP	Practical Language – Group 1	A. Fachard, ce	A	Me 12-14	SCII 457
32E0272	TP	Practical Language – Group 1	A. Fachard, ce	P	Me 12-14	SIP 3H8
32E0272	TP	Practical Language – Group 2	A. Fachard, ce	AN	Ve 12-14	Maraîchers 201
32E0272	TP	Practical Language – Group 3	A. Fachard, ce	AN	Ve 14-16	Maraîchers 201

Faculty Information Session about On-Line Registration (IEL)

Students must attend the obligatory Faculty information session for all new students about on-line registration, which will take place on **Thursday, 28 September 2023** at **18:15** in room **U 300 - Uni Dufour**.

The Writing Lab

The Writing Lab is an individual tutorial service provided for those who seek to improve their written English. It is located next to the Secretariat in the English Department (CO 213), on the second floor of the Comédie building (12, boulevard des Philosophes), and is open several half-days per week. You may schedule a 30-minute appointment with a tutor online in order to discuss a piece of writing at any stage (from outline to finished paper). First-year students are usually requested to visit the lab at least once, although the service is also available to upper-level students. Students may be asked by their instructors to attend the Writing Lab throughout their studies. Sign-up: <https://calendly.com/edwl/>.

Statement on Plagiarism

Plagiarism is the misrepresentation of the words or ideas of another as one's own. It applies to published material (whether in print or electronically), as well as unpublished material, such as the work of another student. At the University of Geneva, plagiarism is treated as a form of fraud. Article 38 of the Règlement de l'Université provides for a series of disciplinary measures to be taken against such conduct, ranging from the annulment of the student's examination session to expulsion from the University:

1. *En cas de fraude ou de tentative de fraude, le jury ou, le cas échéant, le surveillant fait immédiatement rapport au doyen de la faculté ou au président de l'école.*
2. *Sur proposition de l'ensemble des enseignants responsables des matières qui font l'objet des examens, le collège des professeurs peut annuler tous les examens subis par le candidat dans la session et ajourner les examens du candidat à une autre session. L'annulation de la session entraîne l'échec du candidat à cette session.*
3. *Le collège des professeurs peut aussi, le cas échéant, proposer au rectorat l'exclusion temporaire, pour une année au plus, ou l'exclusion définitive du candidat.*

Avoiding plagiarism is basically a matter of acknowledging one's sources. The procedures for doing so are explained in detail in the *Style Sheet*, which is available to download from the homepage of the English Department website. For more information about plagiarism and how to avoid it, consult the following website: https://owl.purdue.edu/owl/teacher_and_tutor_resources/preventing_plagiarism/avoiding_plagiarism/index.html

The Library for English Literature

The library is the heart of every university, and the Department of English is fortunate enough to have a good one. Located in the renovated Jura building of Uni Bastions, the library houses approximately 25,000 volumes of English literature, criticism, general background and reference, in addition to journals of literary criticism and theory. Books and journals in the field of English linguistics are also available on loan or for consultation. Its hours are 8:00-22:00 Monday through Friday, and 9:00-18:00 Saturdays and Sundays, with a reduced schedule during university vacation periods. In addition to books from UNIGE library collections, students may also borrow from libraries throughout Switzerland that are part of the same network called SLSP. The student card is also the library card, but it is necessary to register online to activate your account. The two-step procedure is described on the library web pages (<https://www.unige.ch/biblio/en/services/registration>). Essential ebooks, journals and online databases for English studies are listed on the library website (<http://www.unige.ch/biblio/anglais>). On the same pages students will find full contact details for H el ene Vincent, the subject librarian for English collections. Questions are welcome at all times.

The main discovery tool students can use to search UNIGE collections is called *swisscovery unige* (<https://swisscovery.unige.ch>). Information on *s ances de formation* for library users can be found at the library desk or online (<https://www.unige.ch/biblio/en/training>).

In addition to the University Library, the Biblioth que de Gen ve (BGE), located in the Parc des Bastions, also has an important collection of books in English literature. To be able to access the BGE online resources it is necessary to fill in a form (<http://www.unige.ch/biblio/vge>). This only needs to be done once during the course of your studies at UNIGE.

AELLA

The *Association des  tudiant.e.s en Langue et Litt rature Anglaises* (AELLA) is the English Department's student association. Its main aim is to promote and celebrate anglophone literatures and cultures within the department by organising cultural and social events. The committee members organize gatherings throughout the year (*ap ros*, game nights) and plan cultural visits. They also run activities such as the Film Club and the Creative Writing Group, which are run by students for students. The AELLA helps make students' voices heard: the committee members answer any questions students may have; they work out solutions to their problems and they forward their concerns or requests to the *Commission mixte*. If you want to find out more about the association and its activities, you can follow it on Facebook and Instagram. You can contact the committee via the e-mail address aella@unige.ch, or via its Facebook and Instagram pages.

The *Commission mixte*

The *Commission mixte* is a body of students, members of the *corps d'enseignement et de recherche* and professors who meet two or three times a year to exchange views on department problems and ways of solving them. The discussions cover topics such as the *Plan d'études*, examinations, teaching and other practical matters. Students interested in becoming delegates can propose their candidature during the department's Annual General Meeting, which usually takes place early in the Spring term. They are also invited to read the reports of the last meetings of the *Commission mixte* (<http://www.unige.ch/lettres/angle/en/current-students/commission-mixte/>) or contact by email one of the present members listed below:

Members of the *Commission mixte* 2023-2024

Corps professoral



Prof. Simon SWIFT
Simon.Swift@unige.ch

Corps d'enseignement et de recherche



Dr Elizabeth KUKORELLY
Elizabeth.Kukorelly@unige.ch



Eliis Maria PETERS
Eliis.Peters@unige.ch

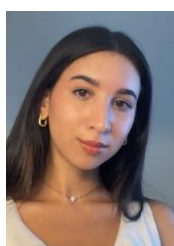
Student Members



Caique CARDOSO
Caique.Cardoso@unige.ch



Lorys FIOLETTI
Lorys.Fioletti@etu.unige.ch



Alexandra PINTO BRITES
Alexandra.Pinto@etu.unige.ch



Christina ZHOLDOKOVA
Christina.Zholdokova@etu.unige.ch



**UNIVERSITÉ
DE GENÈVE**
FACULTÉ DES LETTRES

DÉPARTEMENT DE LANGUE ET LITTÉRATURE ANGLAISES

PLAN D'ETUDES DE LANGUE ET LITTÉRATURE ANGLAISES

BACCALAURÉAT UNIVERSITAIRE
BACHELOR OF ARTS (BA)

Entrée en vigueur : Septembre 2023



Avant-propos

Le plan d'études de langue et littérature anglaises propose un programme en deux stades au cours desquels l'étudiant-e acquiert une liberté progressive dans le choix de ses sujets en fonction de ses connaissances de base :

- I. Le premier niveau du Baccalauréat universitaire (Bachelor of Arts, BA) offre une introduction générale à la discipline, tant en littérature qu'en linguistique.
- II. Au deuxième niveau du BA, les études se poursuivent de manière à la fois plus avancée et plus articulée, notamment autour de périodes historiques en littérature et de sujets plus spécialisés en linguistique. Le diplôme de Baccalauréat universitaire (BA) atteste donc d'une connaissance des diverses formes de la littérature anglophone de ses origines à nos jours, ainsi que d'une certaine compétence en linguistique anglaise.

L'obtention du Baccalauréat se fait selon un système de crédits accordés par modules. Une liste des enseignements correspondant à chaque module est publiée annuellement. Les enseignements sont dispensés et évalués en anglais. Quatre types d'enseignement sont distingués :

- Cours et travaux pratiques d'introduction (modules BA1 et BA2) : voir détails ci-dessous.
- Séminaire : normalement semestriel, 2 heures par semaine.
- Cours : normalement semestriel, 2 heures par semaine.
- Cours-séminaire : normalement semestriel, 2 heures par semaine.
- Abréviations :

CR : cours

CS : cours-séminaire

SE : séminaire

TP : travaux pratiques

Certains modules demandent l'obtention d'une attestation de séminaire pour leur validation. Les modalités pour l'obtention de cette attestation sont différentes selon les séminaires; elles sont définies par l'enseignant-e en début de semestre. Les évaluations se font sous la forme d'un examen écrit ou d'un examen oral ou d'un travail écrit ou d'un contrôle continu. Les modalités des travaux écrits et des contrôles continus sont définies par l'enseignant-e en début d'enseignement.



BACCALAURÉAT UNIVERSITAIRE

BACHELOR OF ARTS (BA)

Condition d'admission :

Les enseignements du Département d'anglais sont ouverts à tout-e étudiant-e ayant acquis une maîtrise suffisante de la langue anglaise pour lui permettre de lire des textes littéraires, d'analyser les formes de la langue, d'écouter et de participer à des discussions dans le cadre des enseignements, et de rédiger des travaux écrits en anglais. Normalement, les étudiant-e-s non anglophones ont fait au moins quatre ans d'études d'anglais (généralement au niveau secondaire).

Premier niveau

Module BA1	Littérature anglaise	12 crédits
Description	/	
Pré-requis	/	
Enseignement(s)	<ul style="list-style-type: none"> • 1-2h/Année de CR, Introduction aux études littéraires. • 2h/Année de TP, Analyse de textes. • 1h/Année de TP, Composition (<i>Academic and Critical Writing Skills</i>). 	
Attestation	Reddition régulière et réussie de travaux dans le cadre des TP de Composition.	
Evaluation	Contrôle continu en Analyse de textes, selon les modalités définies en début d'enseignement.	
Condition(s)	La note de 4 est requise pour la réussite de ce module.	
Remarque(s)	La réussite de ce module (note minimale : 4) conditionne l'accès aux modules BA4, BA5, BA6 et BA7.	



**UNIVERSITÉ
DE GENÈVE**

FACULTÉ DES LETTRES

Module BA2	Linguistique et langue anglaises	12 crédits
Description	/	
Pré-requis	/	
Enseignement(s)	<ul style="list-style-type: none"> • 1-2h/Année de CR, Introduction à la linguistique anglaise. • 2h/Année de TP, Linguistique anglaise. • 2h/Année de TP, Perfectionnement de langue (<i>Practical Language</i>). 	
Attestation	Portant sur le TP de perfectionnement de langue, selon les modalités définies en début d'enseignement.	
Evaluation	Contrôle continu portant sur l'ensemble des enseignements de linguistique du module, selon les modalités définies en début d'enseignement.	
Condition(s)	La note de 4 est requise pour la réussite de ce module.	
Remarque(s)	La réussite de ce module (note minimale : 4) conditionne l'accès au module BA3.	

Deuxième niveau

Module BA3	Linguistique anglaise	12 crédits
Description	/	
Pré-requis	Réussite de BA2 au préalable.	
Enseignement(s)	<ul style="list-style-type: none"> • 2 x 2h/Semestre de CS, Enseignements de linguistique anglaise. 	
Attestation	Portant sur l'un des enseignements, selon les modalités définies en début d'enseignement.	
Evaluation	Examen oral (env. 30 minutes) portant sur l'autre enseignement.	
Condition(s)	/	
Remarque(s)	/	

Module BA4	Littérature et civilisation anglo-saxonnes et médiévales	12 crédits
Description	/	
Pré-requis	Réussite de BA1 au préalable.	
Enseignement(s)	<ul style="list-style-type: none"> • 2h/Semestre de CR, Enseignement de littérature et civilisation anglo-saxonnes et médiévales. • 2h/Semestre de SE, Séminaire de littérature et civilisation anglo-saxonnes et médiévales. 	
Attestation	Portant sur le séminaire, selon les modalités définies en début d'enseignement.	
Evaluation	Examen écrit (4 heures) portant sur le cours.	
Condition(s)	/	
Remarque(s)	/	

Module BA5	Littérature moderne des 16^e, 17^e et 18^e siècles	12 crédits
Description	/	
Pré-requis	Réussite de BA1 au préalable.	
Enseignement(s)	<ul style="list-style-type: none"> • 2h/Semestre de CR, Enseignement de littérature moderne des 16e, 17e et 18e siècles • 2 x 2h/Semestre de SE, Enseignements de littérature moderne des 16e, 17e et 18e siècles 	
Attestations	Une portant sur le cours et une sur un des deux séminaires, selon les modalités définies en début d'enseignement.	
Evaluation	Contrôle continu portant sur le séminaire qui n'a pas été choisi pour l'attestation, selon les modalités définies en début d'enseignement.	
Condition(s)	/	
Remarque(s)	La littérature américaine des 16e-21e siècles est enseignée sous le module BA7.	



**UNIVERSITÉ
DE GENÈVE**

FACULTÉ DES LETTRES

Module BA6	Littérature moderne et contemporaine des 19^e, 20^e et 21^e siècles	12 crédits
-------------------	--	-------------------

Demi-module BA6a	Littérature moderne et contemporaine des 19^e, 20^e et 21^e siècles (a)	6 crédits
Description	/	
Pré-requis	Réussite de BA1 au préalable.	
Enseignement(s)	<ul style="list-style-type: none"> • 2h/Semestre de CR, Enseignement de littérature moderne et contemporaine des 19^e, 20^e et 21^e siècles • 2h/Semestre de SE, Séminaire de littérature moderne et contemporaine des 19^e, 20^e et 21^e siècles. 	
Attestation	Portant sur le séminaire, selon les modalités définies en début d'enseignement.	
Evaluation	Examen écrit (4 heures) portant sur le cours.	
Condition(s)	/	
Remarque(s)	La littérature américaine des 16 ^e -21 ^e siècles est enseignée sous le module BA7.	

Demi-module BA6b	Littérature moderne et contemporaine des 19^e, 20^e et 21^e siècles (b)	6 crédits
Description	/	
Pré-requis	Réussite de BA1 au préalable.	
Enseignement(s)	<ul style="list-style-type: none"> • 2h/Semestre de SE, Séminaire de littérature moderne et contemporaine des 19^e, 20^e et 21^e siècles. 	
Attestation	/	
Evaluation	Travail écrit noté selon les modalités définies en début d'enseignement.	
Condition(s)	/	
Remarque(s)	La littérature américaine des 16 ^e -21 ^e siècles est enseignée sous le module BA7.	



**UNIVERSITÉ
DE GENÈVE**

FACULTÉ DES LETTRES

Module BA7	Littérature et civilisation américaines des 16^e-21^e siècles	12 crédits
Description	/	
Pré-requis	Réussite de BA1 au préalable.	
Enseignement(s)	<ul style="list-style-type: none"> • 2h/Semestre de CR, Enseignement de littérature américaine des 16^e-21^e siècles. • 2h/Semestre de SE, Séminaire de littérature américaine des 16^e-21^e siècles. 	
Attestation	Portant sur le séminaire, selon les modalités définies en début d'enseignement.	
Evaluation	Examen oral (env. 30 minutes) portant sur le cours.	
Condition(s)	/	
Remarque(s)	/	



MODULES OFFERTS AUX ETUDIANT-E-S D'AUTRES DISCIPLINES

Toutes les conditions spécifiées plus haut dans la description des modules s'appliquent.

Pour les étudiant-e-s dont les deux branches principales sont des disciplines autres que l'anglais :

Module BA1	Littérature anglaise	12 crédits
Module BA2	Linguistique et langue anglaises	12 crédits
Module BA3	Linguistique anglaise	12 crédits
Module BA4	Littérature et civilisation anglo-saxonnes et médiévales	12 crédits
Module BA5	Littérature moderne des 16^e, 17^e et 18^e siècles	12 crédits
Module BA6	Littérature moderne et contemporaine des 19^e, 20^e et 21^e siècles	12 crédits
Module BA7	Littérature et civilisation américaines des 16^e-21^e siècles	12 crédits