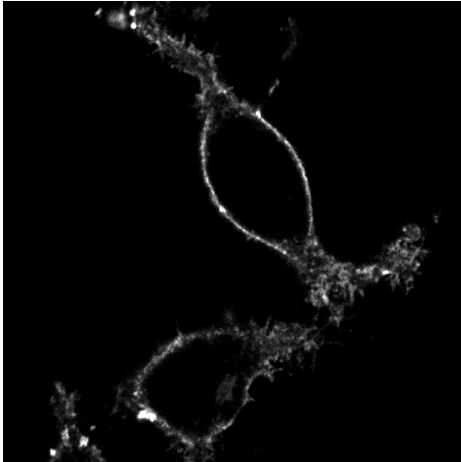
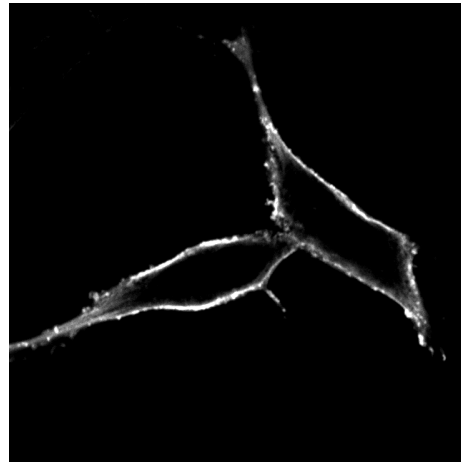


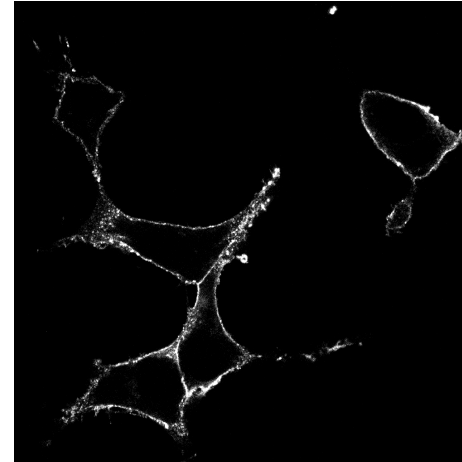
**anti-HA
(AF291)**



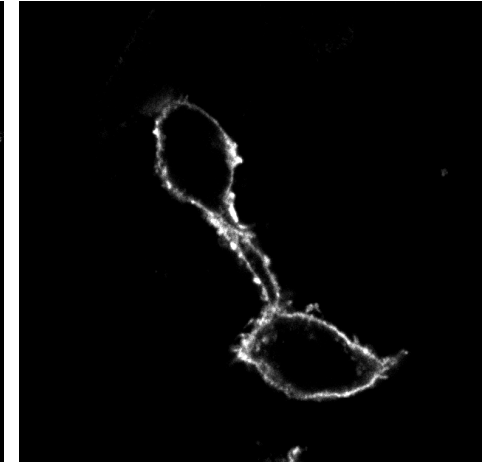
**anti-EPEA
(AI215)**



**anti-Flag
(TA001)**



**anti-Myc
(TA002)**



(Antibodies detect a surface protein exhibiting the indicated epitope tag)

These and many other antibodies are described and can be ordered from ABCD Antibodies (<https://abcd-antibodies.com/>).

All antibodies available within 1 week (depending on the choice of Fc: mouse, human, rabbit and guinea pig)

Price: 100 µg / 200.- CHF