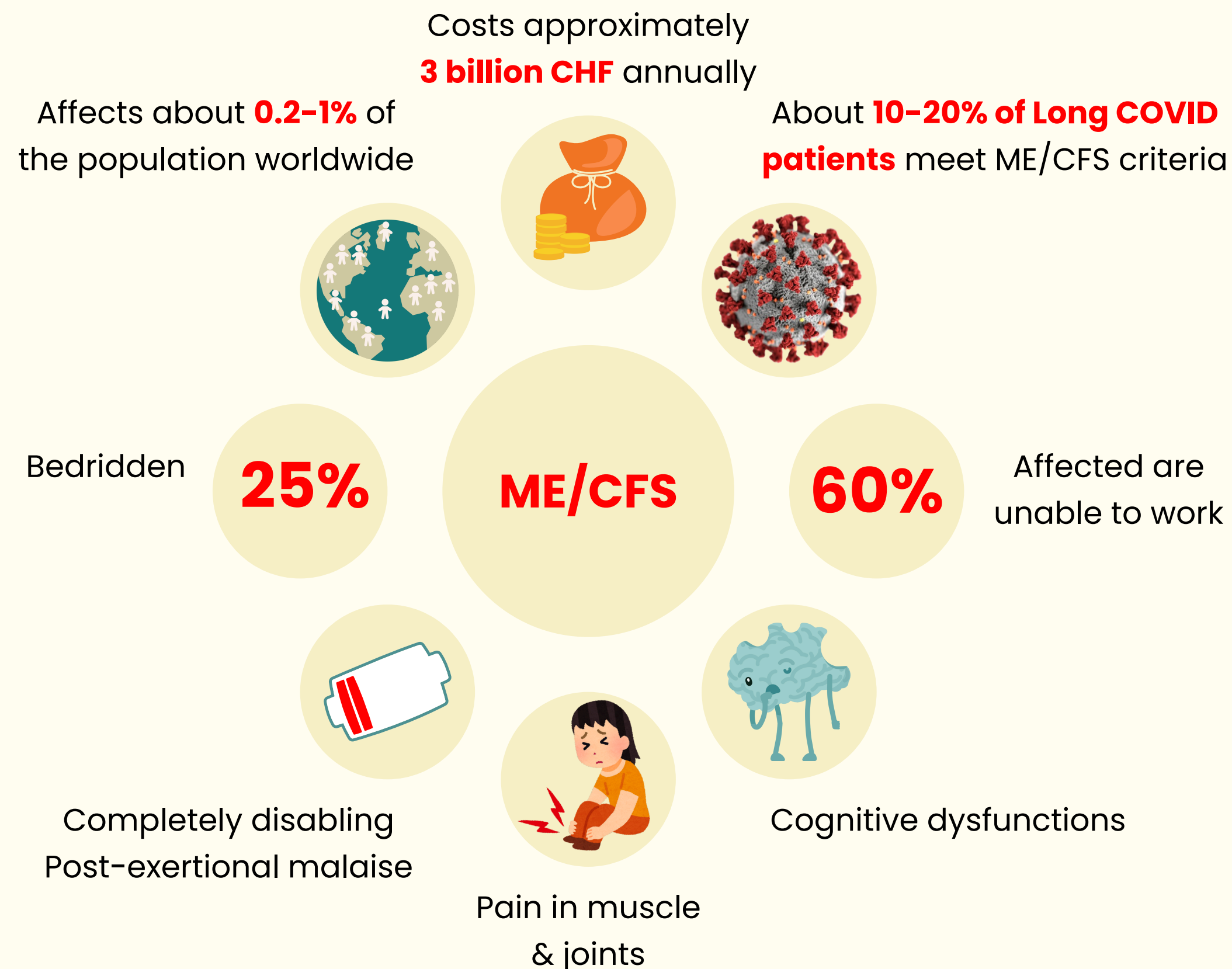


MYALGIC ENCEPHALOMYELITIS/CHRONIC FATIGUE SYNDROME (ME/CFS): A COMPLEX & NEGLECTED NEURO-IMMUNOLOGICAL DISEASE

ME/CFS is a severe, chronic, neuro-immunologic disease.

Often triggered by viral or bacterial infections such as Epstein-Barr virus, enteroviruses, Borrelia burgdorferi, or more recently SARS-CoV-2.



Needs

Establish a comprehensive research platform for ME/CFS in Switzerland

- **Formation of expert groups and continuous literature reviews**
- **Cohort development**
- **Use the cohort as a platform to conduct initial research projects**
- **Dissemination, communication, and awareness**

- Develop a longitudinal cohort of people with ME/CFS in Switzerland that can support various clinical and epidemiological projects
- Compile an evidence-informed list of potential off-label treatments
- Describe the affected patient population, cluster symptom profiles and clinical trajectories, and perform potential additional research projects as defined by the expert committee
- Ensuring wide dissemination of the findings through educational videos; project outcomes will be presented at the Geneva Health Forum

More Info:
olivia.keiser@unige.ch