

# Installing and configuring the Shrewsoft VPN IPSEC client for Windows (2k, XP, Vista, 7/8.x/10)

AHU, IX/28/2015

## 1. Installation

### 1.1. Download the client software

The vpn client software: [vpn-client-2.2.2-release.exe](#) can be installed on 32 and 64 bits Microsoft Windows operating systems.

### 1.2. UniGE profile download

**Do NOT use Internet Explorer** (use Firefox or Google Chrome) to download the profile file: <http://wadme80.unige.ch/pubfiles/UniGE.vpn>

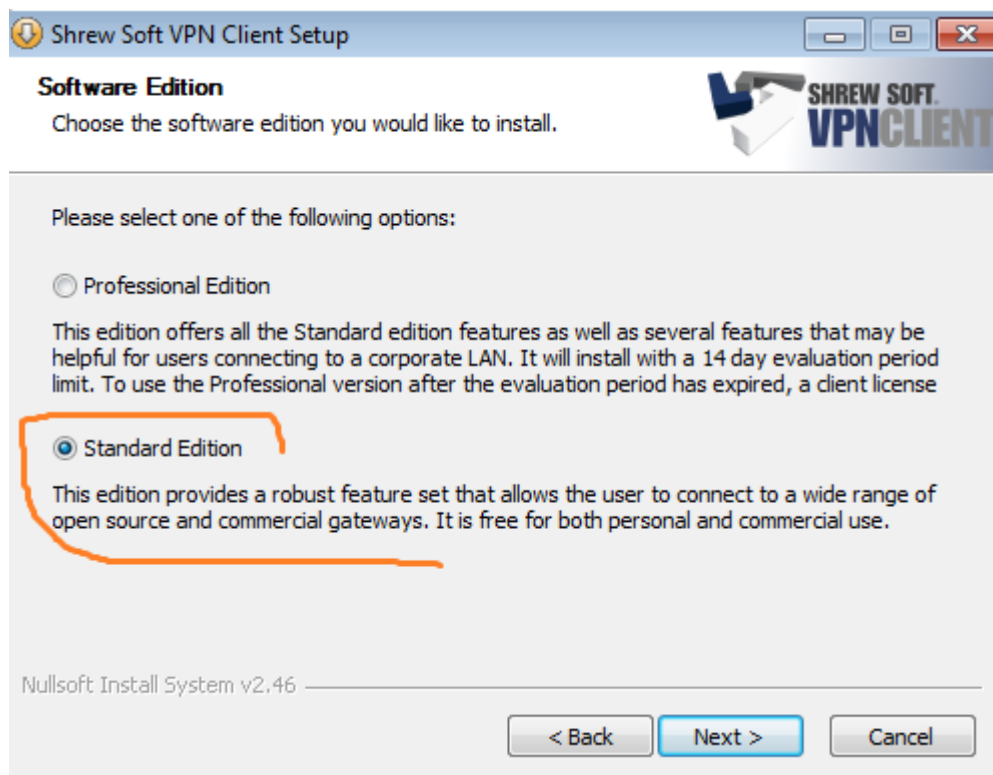
### 1.3. Installation

Run the previously downloaded vpn client software:

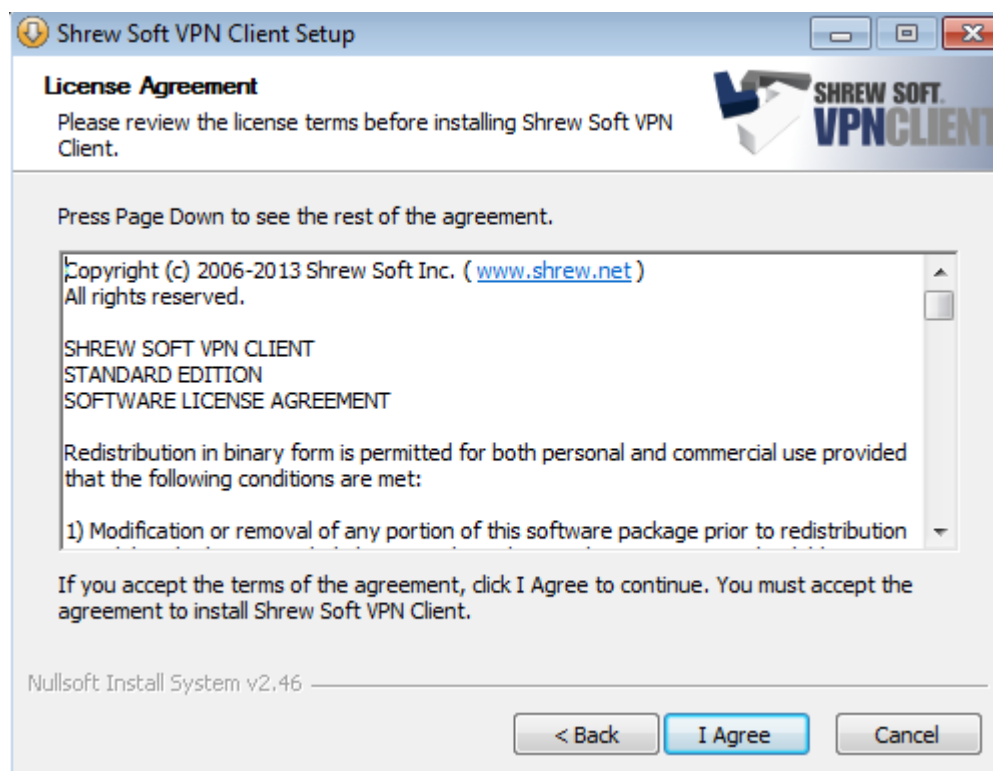


Click **Next >**

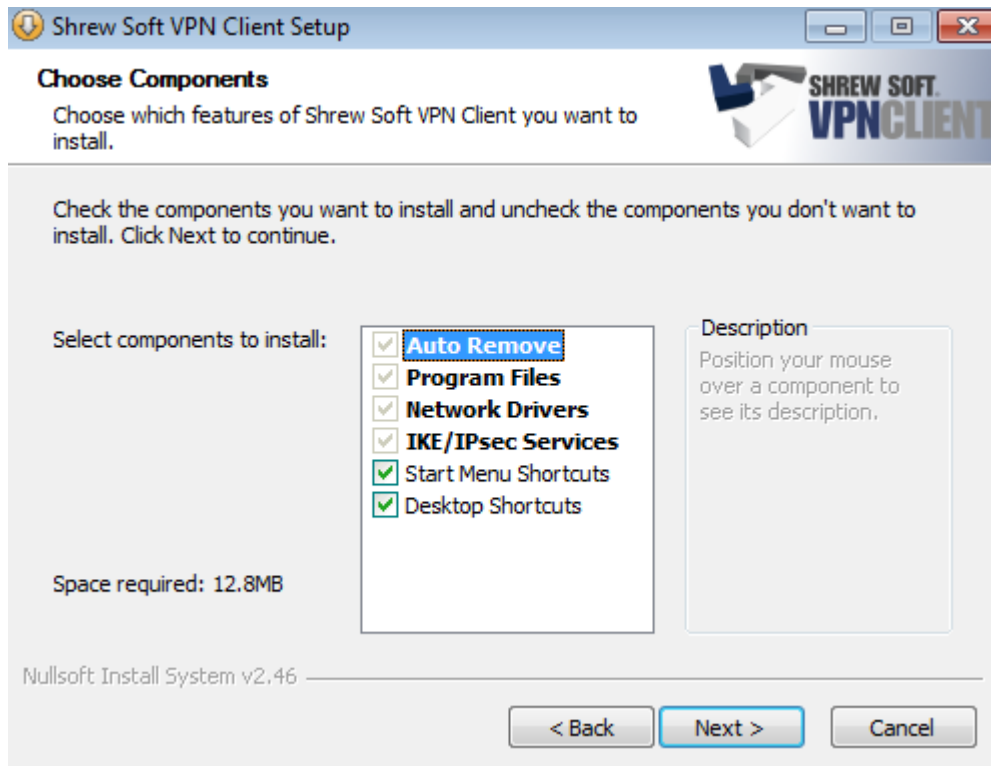
Select: **Standard Edition**



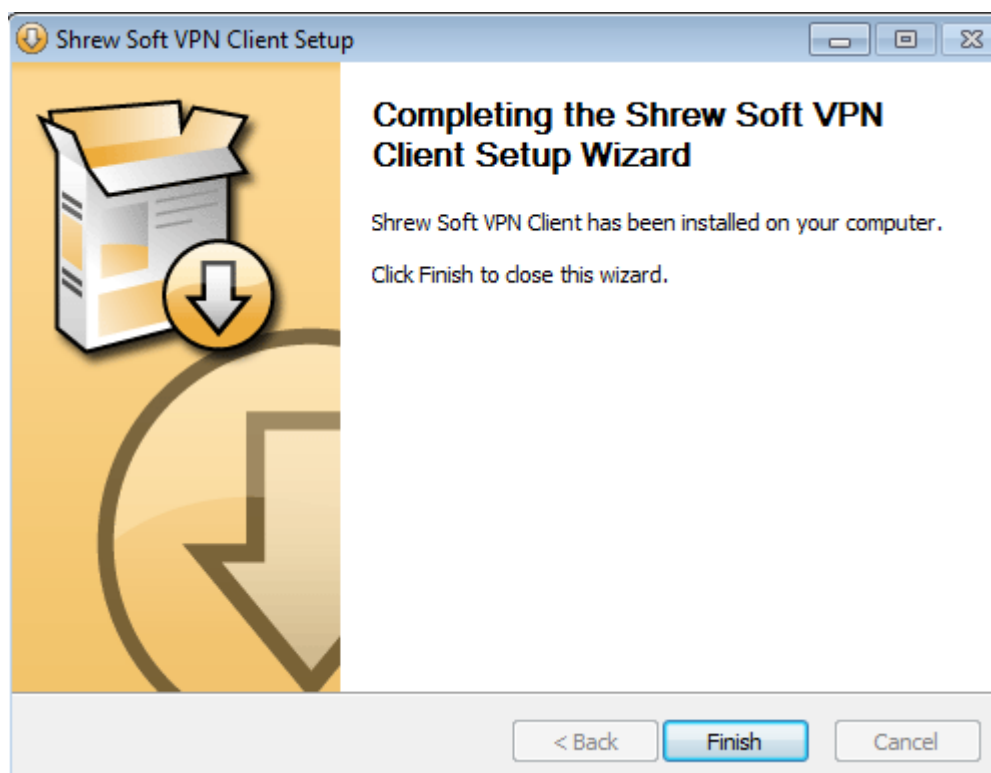
Click **Next >**



Click **I Agree**

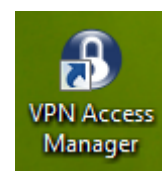


Click **Next >**



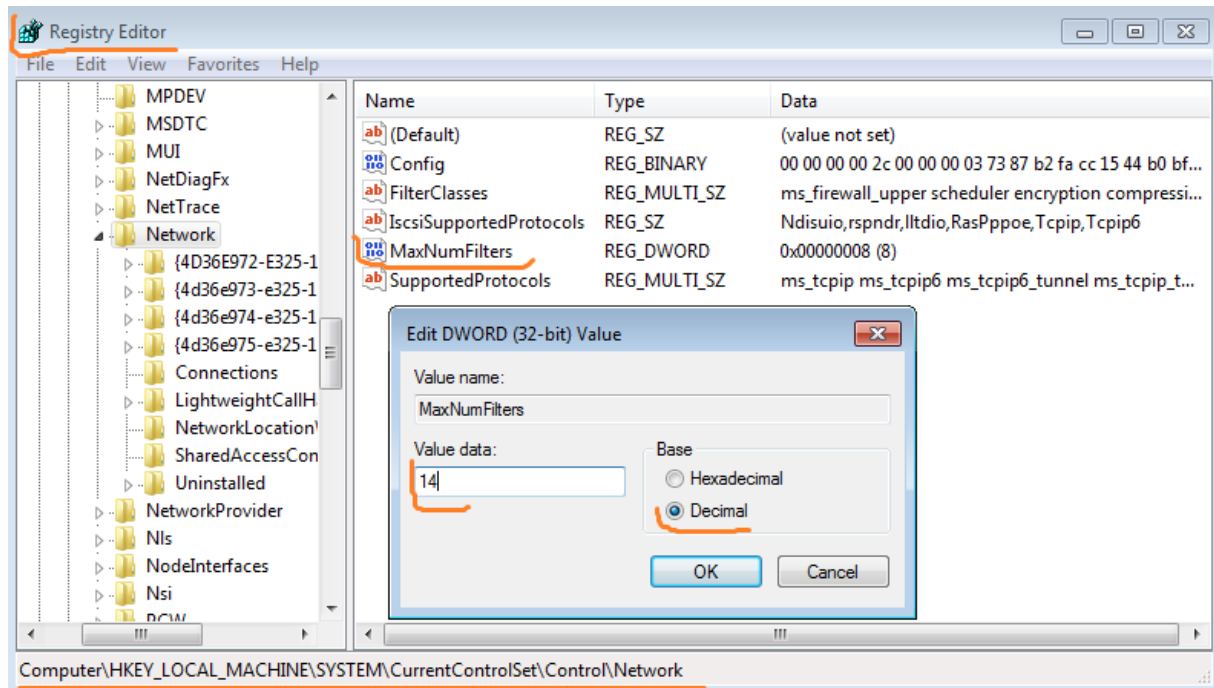
Click **Finish**

The **VPN Access Manager** icon will appear on the Desktop after a successful installation.



If "**Error 0x8004a029: Couldn't install the network component**" appears during installation; you must increase the MaxNumFilters from 8 (default) to 14 (max) in the following registry key:

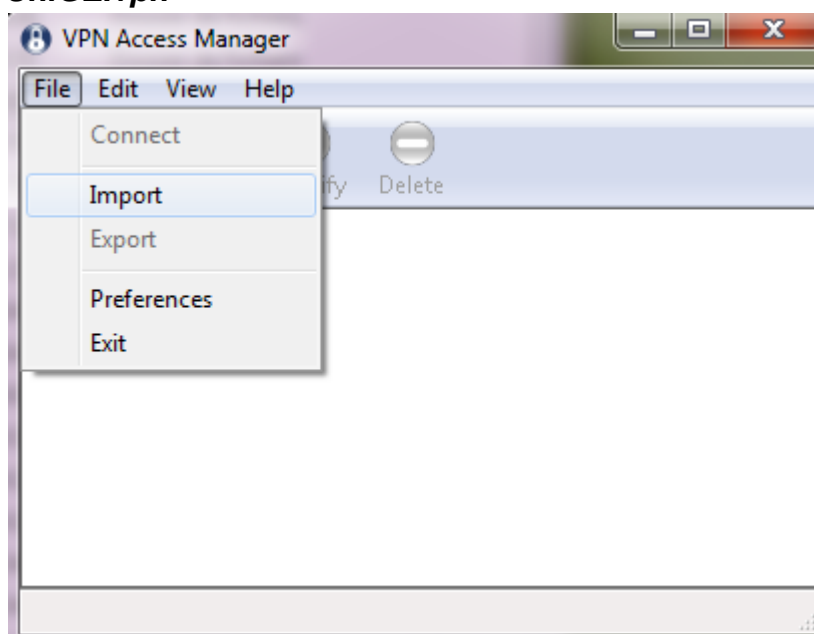
**HKEY\_LOCAL\_MACHINE\SYSTEM\CurrentControlSet\Control\Network\MaxNumFilters**



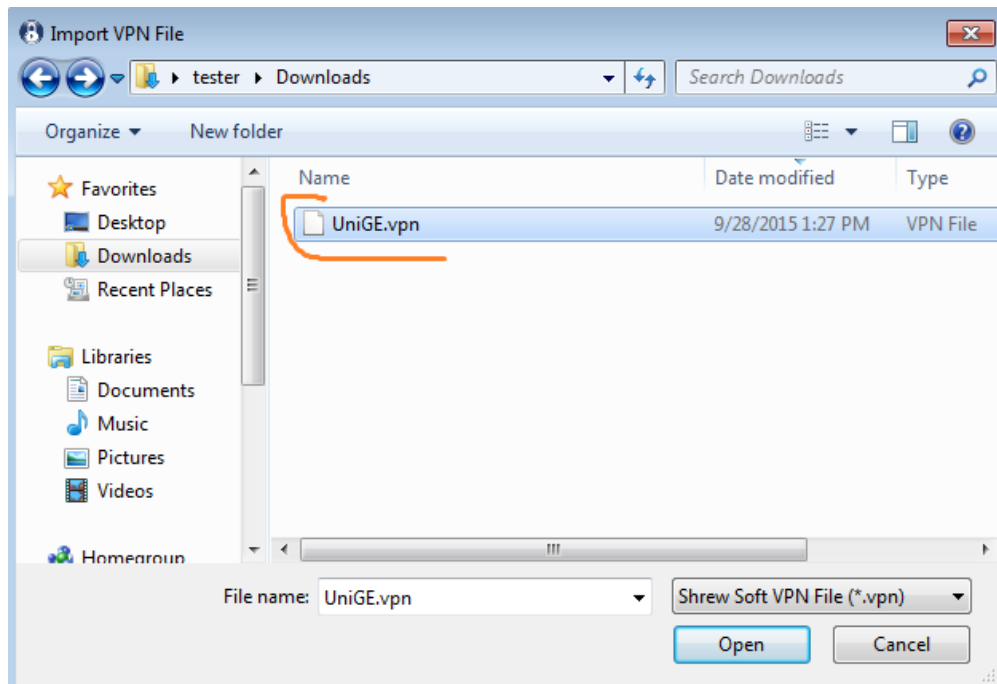
and re-run the installation program (it might be necessary to uninstall the previously broken vpn-client and reboot the PC before re-installation).

## 2. Configuration

Run the **VPN Access Manager** and import the profile: **File >> Import UniGE.vpn**

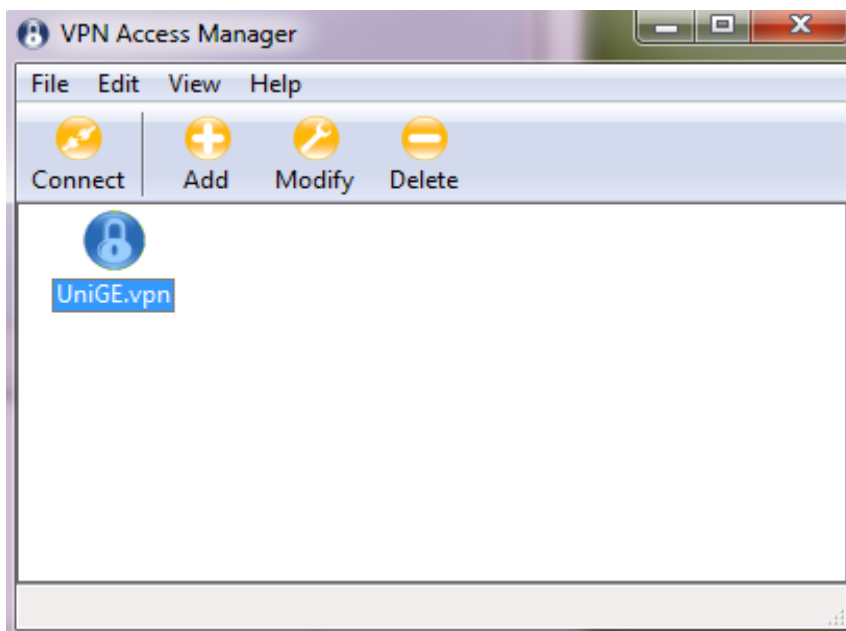


Select the downloaded profile : **UniGE.vpn** and click **Open**

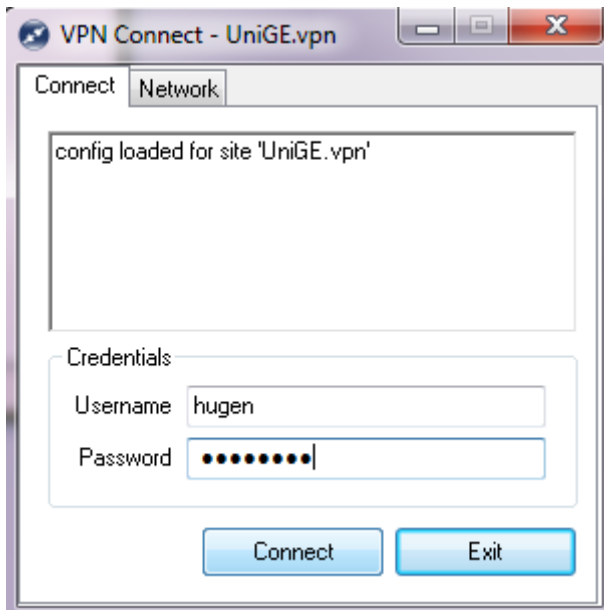


### 3. Connection

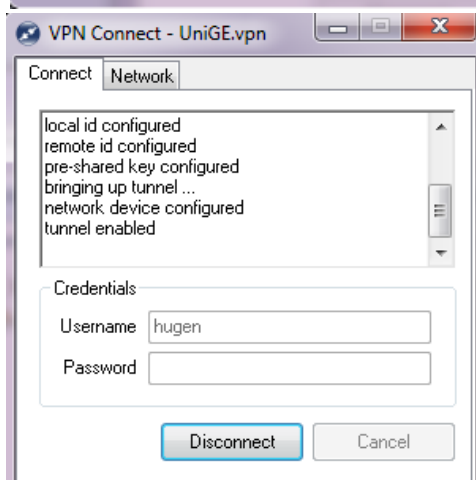
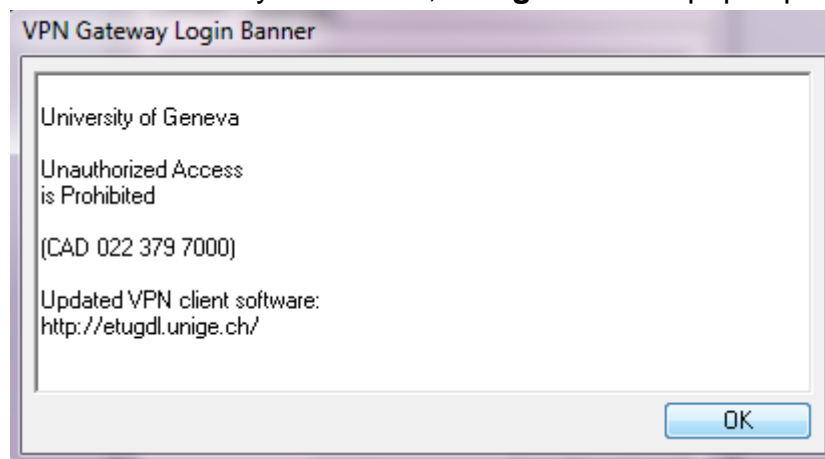
A VPN connection to UniGE is now configured; please remember that it will not work while connected to the UniGE network (wired or WiFi)...



Give your UniGE credentials: **Username** (shortname), **Password** and click **Connect**



When successfully connected, a **Login Banner** pops up:



## 4. UniGE VPN infrastructure rules

The VPN infrastructure is a shared resource often used by 120+ concurrent users ; therefore, in order to preserve network bandwidth, the following activities are strictly prohibited :

- Peer to Peer (P2P)
- Remote filesystem access ( CIFS, SAMBA, NFS, ...)
- Video Streaming
- ....

The VPN infrastructure is provided to carry out academic or administrative tasks ; abuse will result in account locking (temporary or definitive).

All other UniGE IT rules apply, see :

Students : <http://www.unige.ch/stic/etudiants/regles/>

Others : <http://www.unige.ch/stic/papat/acces/>