



Tips and tricks

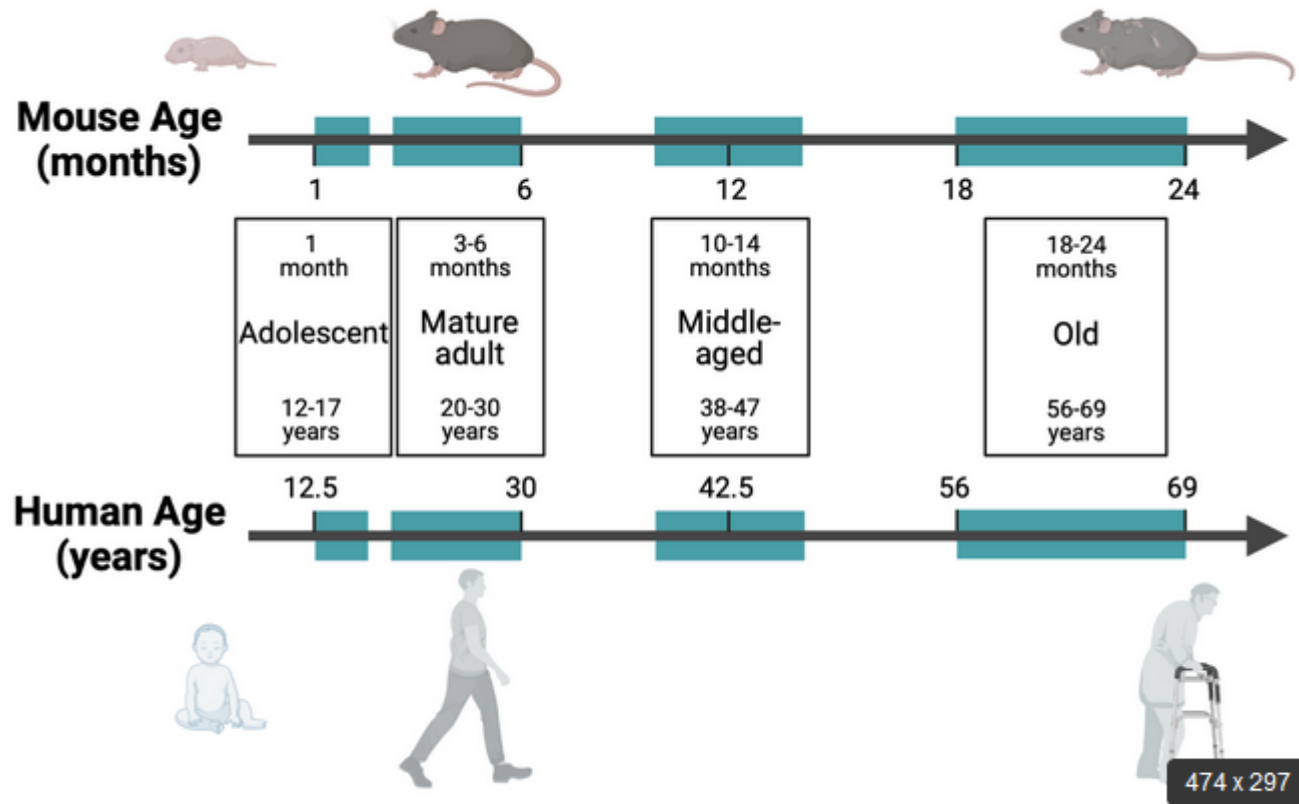
Veyrat-Durebex Christelle, PhD

Level of pain vs. Procedure (some examples)

Procedure Classifications for Mice and Rats

Class	1	2	3	4
Pain Level	Mild Pain	Moderate Pain	Moderate/Severe Pain	Severe Pain
Examples	Subcutaneous implant with trocar Ocular procedures Tracheal injections Skin biopsy/wound Vessel cut down or cannulation Intramuscular injection Subcutaneous osmotic pump Dental extraction	Craniotomy with or without implant Simple laparotomy Embryo transfer Ovariectomy Castration Intra-peritoneal osmotic pump	Laparotomy with major organ manipulation or removal Organ transplant Spinal surgery	Peritonitis/pancreatitis Thoracotomy Hind limb ischemia Spinal or nerve injury Cecal ligation and puncture Orthopedics/Fractures Bone cancer

Mice vs. Human age



At what age are laboratory mice considered adult? | ResearchGate

474 x 297

Mice vs. Human age

	Weaning	Puberty	Adulthood
Human	180d	11.5y	20y
Mice	28d	42d	10w
H/M	$180/28=6.43$	$4198/42=99.95$	$7300/70=104.3$

1d mouse=6.5d human

1d mouse=105d human

1d mouse=100d human

Ex: a treatment of 10 days at 12w of age in mice = 1050 days in humans \approx 3 years



App for generating randomized mouse groups

► <https://github.com/RvE54/RandoMice/releases>