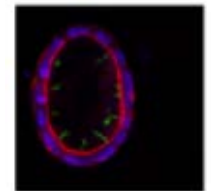
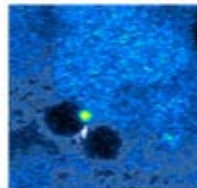
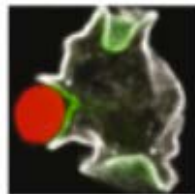
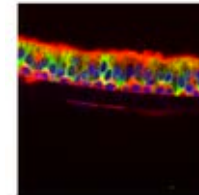
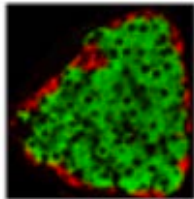


INFORMATION

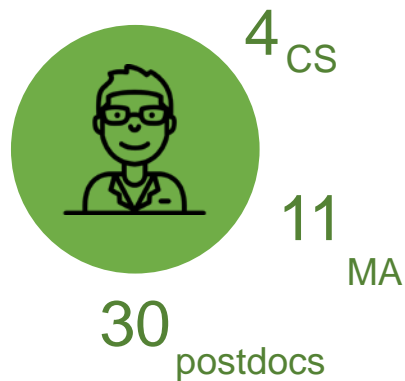
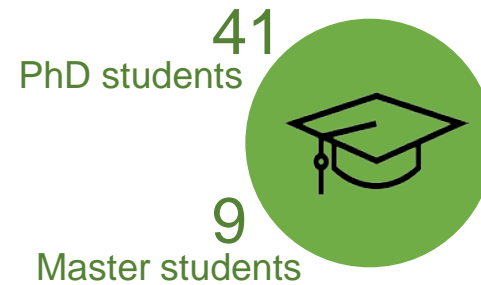
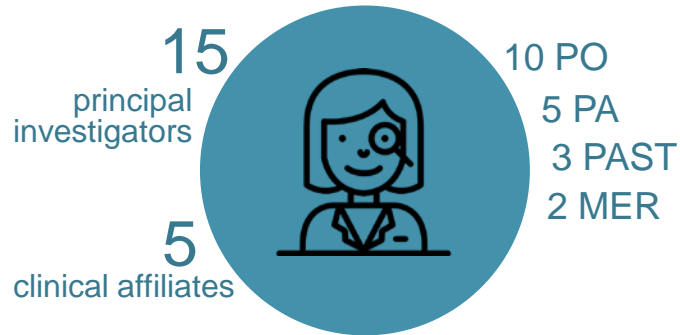
DEPARTMENT CELL PHYSIOLOGY AND METABOLISM (PHYM)

December 6, 2019

Michelangelo Foti

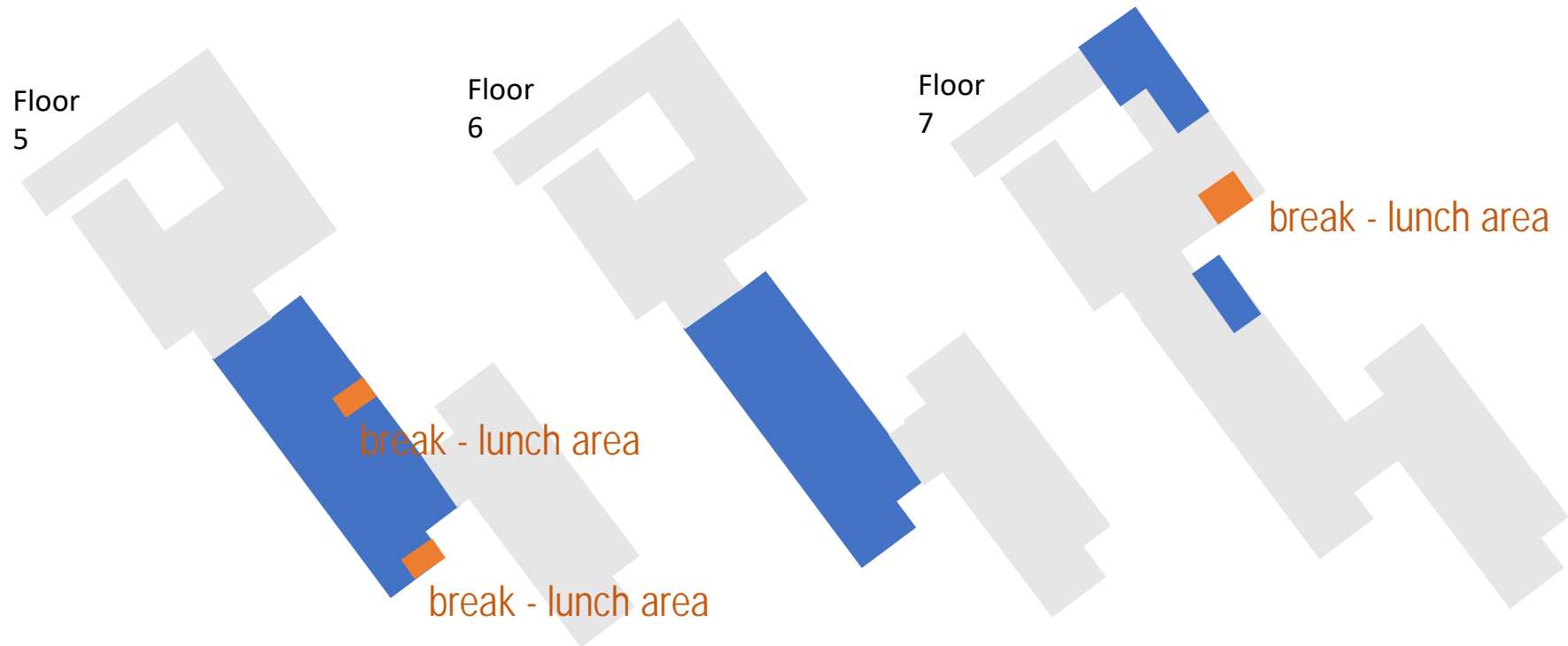


>160 people from over 25 countries



+ Apprentices
Trainees
.....

A department on several floors



+ 1 room 2nd floor

PHYM: 20 PIs

15 members



Perrine
CASTETS
PAST



Roberto
COPPARI
PO



Pierre
COSSON
PO



Nicolas
DEMAUREX
PO



Eric
FERAILLE
PA



Michelangelo
FOTI
PA



Maud
FRIEDEN
MER



Anne-Claude
GAVIN
PO



Monica
GOTTA
PO



Vladimir
KATANAEV
PO



Pierre
MAECHLER
PO



Patrick
MERALDI
PO



Miriam
STOEBER
PAST



Mirko
TRAJKOVSKI
PO



Bernhard
WEHRLE-HALLER
PA

5 clinical affiliates



Marc
CHANSON
PA



Sophie
DE SEIGNEUX
PAST



Charna
DIBNER
MER

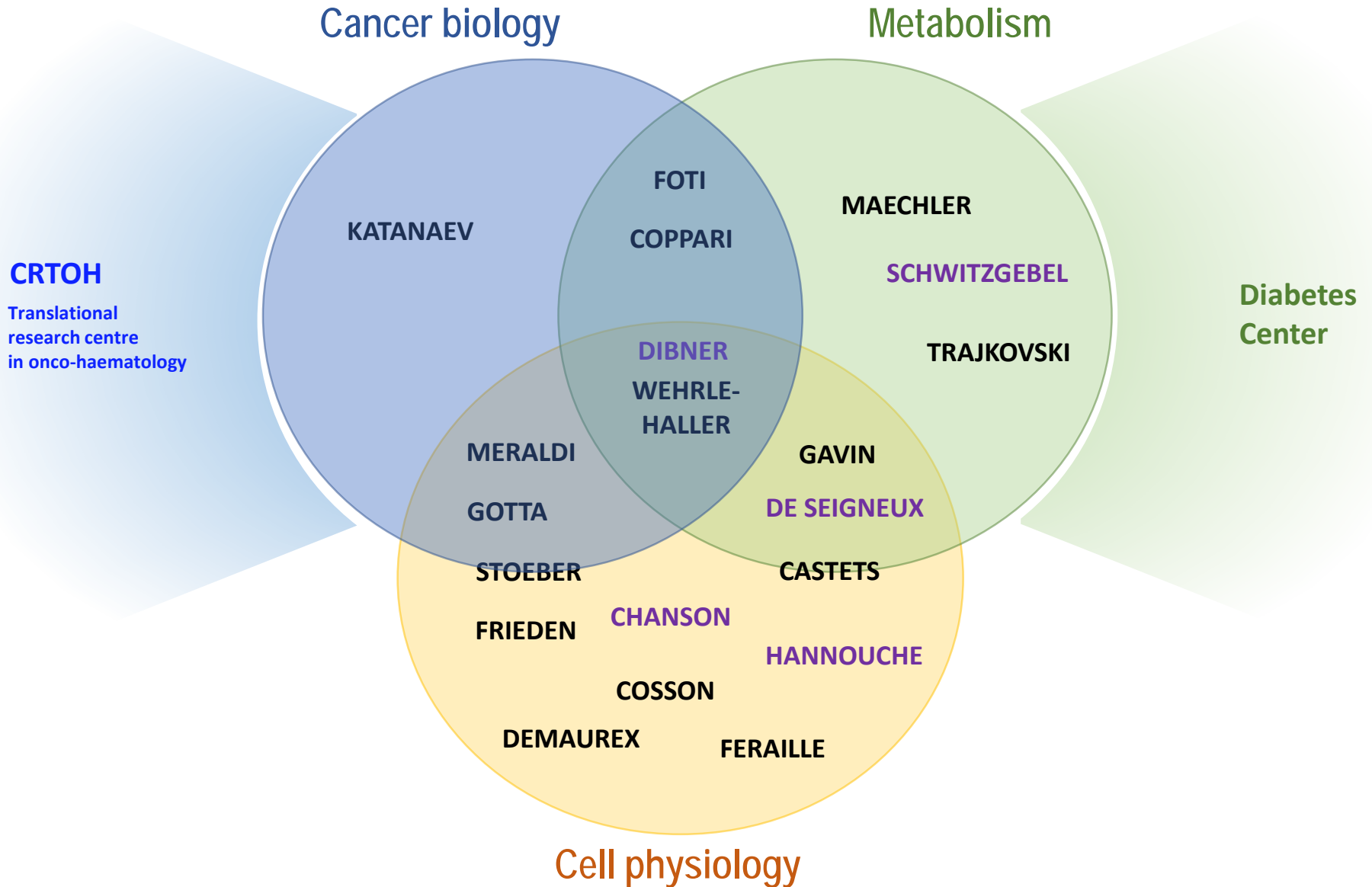


Didier
HANNOUCHE
PO



Valérie
SCHWITZGEBEL
PA

PHYM research




PHYM activities

more than
1'100
hours of
courses



responsibilities
& teaching
in
2
bachelors

involvement
in
2
Faculty
centres



Diabetes
coordination, 9 members

CRTOH
coordination, 4 members

40
seminars



15%
guest
speakers



leads
in
9
core
facilities

2
scientific
retreats



PI
biannual

PhD
annual

Open day
Diabetes & obesity



Telethon

5
social
events



PHYM teaching

Bachelor human medicine

Responsible: M. Chanson

Responsibilities

Croissance et Vieillissement cellulaire (CVC)

M. Foti, B. Wehrle-Haller

Nutrition, Digestion et Métabolisme (NDM)

C. Dibner, T. Brun

Excrétion & Homéostasie (EH)

M. Frieden, S. De Seigneux

Intégration

E. Feraille

Teaching

Croissance et Vieillissement cellulaire

Nutrition, Digestion et Métabolisme

Excrétion & Homéostasie

Intégration

Introduction au système nerveux

TP en histologie, physiologie

...

Bachelor biomedical sc.

Responsible: P. Cosson

Responsibilities

Commitee: P. Cosson, M. Frieden, M. Foti

Analyse & écriture scientifique

P. Cosson

Teaching

Introduction sc. biomédicales

Analyse & écriture scientifique

Initiation biologie moléculaire

Croissance et Vieillissement cellulaire

Excrétion & Homéostasie

TP en histologie ...

Postgraduate courses

Modules for PhD students

Responsibilities

Metabolism: M. Trajkovski, P. Maechler

Scientific writing: P. Meraldi

Communicating your science: M. Gotta

Cell interaction: B. Wehrle-Haller

+ Teaching in many different modules

Selected chapters

Optional courses, MAS

Science Faculty / HES

Various courses/seminars

Leads in Core facilities at the Faculty of Medicine

Bio-imaging

Academic co-director:
B. Wehrle-Haller

Biostock

Academic director:
N. Demaurex

Electron microscopy

Academic director:
M. Foti

Histology

Academic director:
P. Cosson

Phenotyping small animals

Academic director:
R. Coppari

Recombinant antibodies

Academic director:
P. Cosson

R.E.A.D.S Unit

Academic director:
N. Demaurex

Zebra fish

Academic director:
N. Demaurex

ChiRo: Rodent surgery (PHYM)

Academic director:
M. Foti

PHYM involvement in University/Faculty commissions and Faculty Centres

UNIGE

Faculty of Medicine

Teaching

Centres

Commission administrative

N. Demaurex

Commission égalité

P. Meraldi, V. Schwitzgebel

Commission informatique

P. Meraldi, N. Demaurex

LERU réseau

N. Demaurex

Commission des animaleries

P. Maechler

Décanat

N. Demaurex
Vice-dean, Faculty Services

Commission Consultative du Doyen

R. Coppari, M. Foti,
P. Meraldi

Conseil participatif

M. Foti, M. Gotta,
P. Maechler, S. de Seigneux

Bureau de la section

M. Foti, P. Meraldi

Commission de la Recherche et de la Relève

N. Demaurex, M. Frieden

Commission bâtiments

N. Demaurex, president

Délegué à l'intégrité

P. Maechler

CCCACAD

N. Demaurex, P. Meraldi

Commission des Privat-docents

E. Feraille, B. Wehrle-Haller

Division Information Scientifique

B. Wehrle-Haller

Comité bachelor

M. Chanson, president
Members:
P. Cosson, C. Dibner, E. Feraille,
M. Foti, M. Frieden,
S. de Seigneux, B. Wehrle-Haller

Commission d'opposition

P. Cosson, president
Members: P. Maechler

Comité biomed

P. Cosson, president
Members: M. Frieden, M. Foti

Bureau Commission de l'Enseignement

M. Chanson, P. Cosson,

Centre Facultaire du diabetes

R. Coppari, coordinator
V. Schwitzgebel, co-coordinator
Members:
C. Dibner, M. Foti, A-C Gavin,
P. Maechler, S. de Seigneux,
M. Trajkovski, B. Wehrle-Haller

CRTOH

P. Meraldi, coordinator
Members: R. Coppari, M. Foti,
M. Gotta, V. Katanaev

+ many other temporary commissions

How the department operates?

PHYM
BOARD

Nicolas Demaurex, Eric Feraille, Michelangelo
Foti, Pierre Maechler, Patrick Meraldi

Weekly meeting

COLLEGE OF
GROUP LEADERS

All PIs & clinical affiliates

Monthly meeting

DIRECTOR

(M. FOTI)

Single 4 years mandate

ADMINISTRATIVE
DIVISION

Tamara Bollmann, Corine Bondallaz,
Véronique Rosset, xxx (to be hired)

Bi-monthly meeting

TECHNICAL
DIVISION

Hervé Blanchard, Yannick Rochbach,
Christelle Veyrat-Durebex, Florian Visentin

Bi-monthly meeting

PHYM human resources: Administrative and technical divisions

ADMINISTRATIVE DIVISION

SECRETARIAT



Tamara
BOLLMANN
100%



Corine
BONDALLAZ
100%

?

Secrétaire 1
50%

ongoing replacement

SCIENCE & COMM



Véronique
ROSSET
80%

since August

TECHNICAL DIVISION

RODENT SURGERY



Christelle
VEYRAT-
DUREBEX
40%



Hervé
BLANCHARD
80%



Yannick
ROHRBACH
100%



Florian
VISENTIN
60%

ENGINEERING

IT

Total: 6 full-time equivalents

Common equipment

- Experimentation animal zone
- P2 laboratory
- Microscopes (Leica, fluorescence, Polycéphal)
- Imaging : Gel Biorad, PXi,...
- Thermocyclers, PCR
- Nucleic acid extractor QIAcube
- Centrifuges, ultra-centrifuges
- Spectrophotometer
- Fridges & freezers (-20°C, -80°C)
- Homogenizer, sonifier
- Autoclave
- Evaporators and concentrators
- Agitator TissueLyser
- Cell counter
- Laptop
- Nitrogen
- Cold and hot rooms
- Etc...



Online reservation for most of them (PHYM website)

Questions: Hervé Blanchard, Yannick Rohrbach, Christelle Veyrat-Durebex

Persons in charge indicated on the machines or in the room

Exact localisation coming on the PHYM website.

ChiRo: Rodent surgery

SERVICES PROVIDED

various
surgical
techniques

perfusion /
fixation

sampling
dissection

injections /
force-feeding

technical
development

HOW AND WHERE ?

Annual fees

Contact: chiro@unige.ch



Christelle
VEYRAT-
DUREBEX



Florian
VISENTIN

