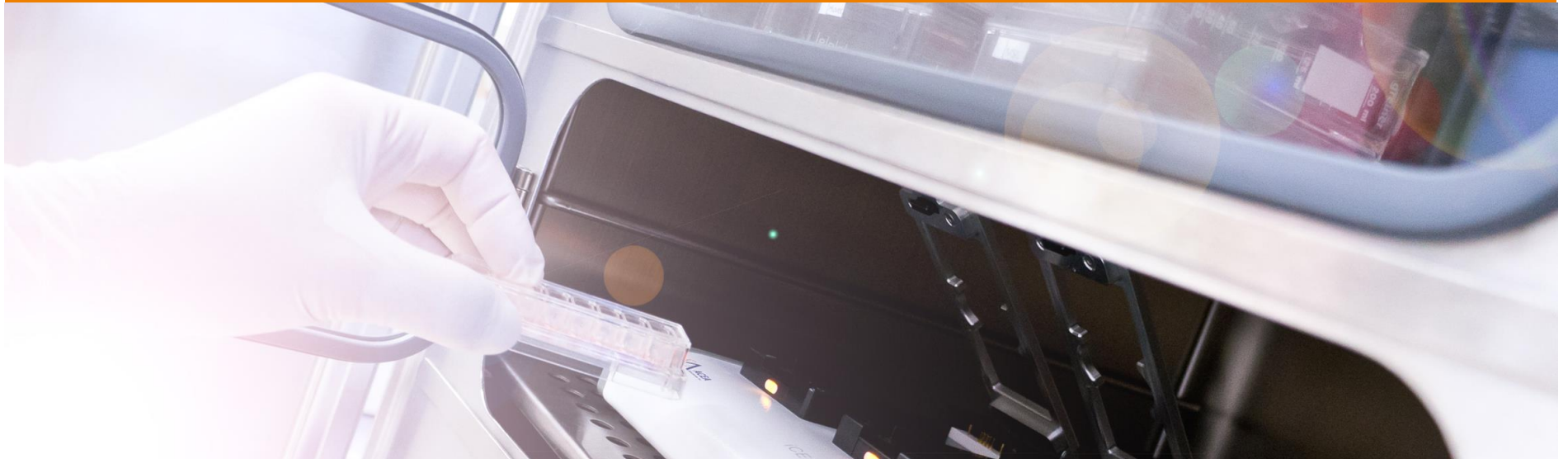


Seminar

CELL ASSAYS for Cytotoxicity & Oncology



Going beyond end-point assays, **xCELLigence Real-Time cell Analyzer**

 **Tuesday Sep 4th, 2018 | 10:00 – 12:00**

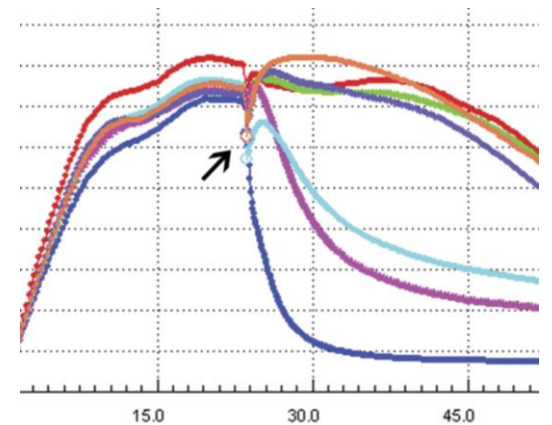
University of Geneva , READS Unit
Department of pathology & Immunology, 9th floor (C09.1530)

[xCELLigence Real-Time Cell Assays for a better understanding of cellular processes and responses: **label-free, full kinetics, non-invasive**, exceeding limitations from traditional Endpoint-Assays]

+ **Real-time and Label-free Assessment of Cytotoxicity using xCELLigence Impedance-based Assays**

+ **Continuously tracking cell migration, invasion**

Dr. Britta Gerlach, Product specialist Cell-based assays, OLS



Real-time monitoring of virus-induced cytopathogenicity.
from: *PLoS One*. 2012;7(2):e31965.
doi: 10.1371/journal.pone.0031965.
Epub 2012 Feb 20.

- + Cytotoxicity (cell, drugs, virus-mediated)
- + Migration/Invasion
- + Receptor mediated signaling
- + Cell-Cell Interaction
- + Adhesion/Proliferation
- + Immune cell activation



Add to your calendar

+ Please register in advance: unite-reads@unige.ch

+ Questions or remarks? Call us at [0800 666 454] or send us an email [info@ols-bio.ch]