

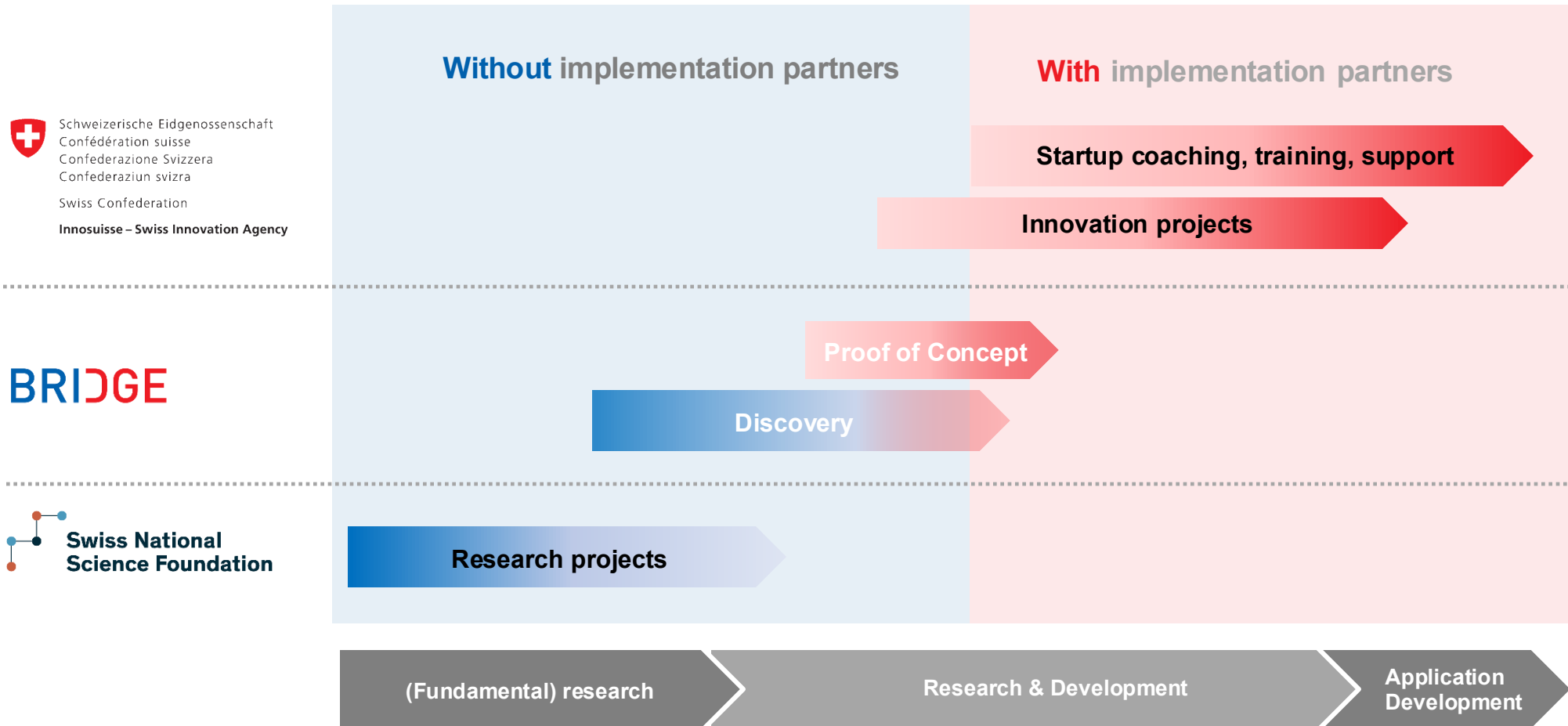
BRIDGE



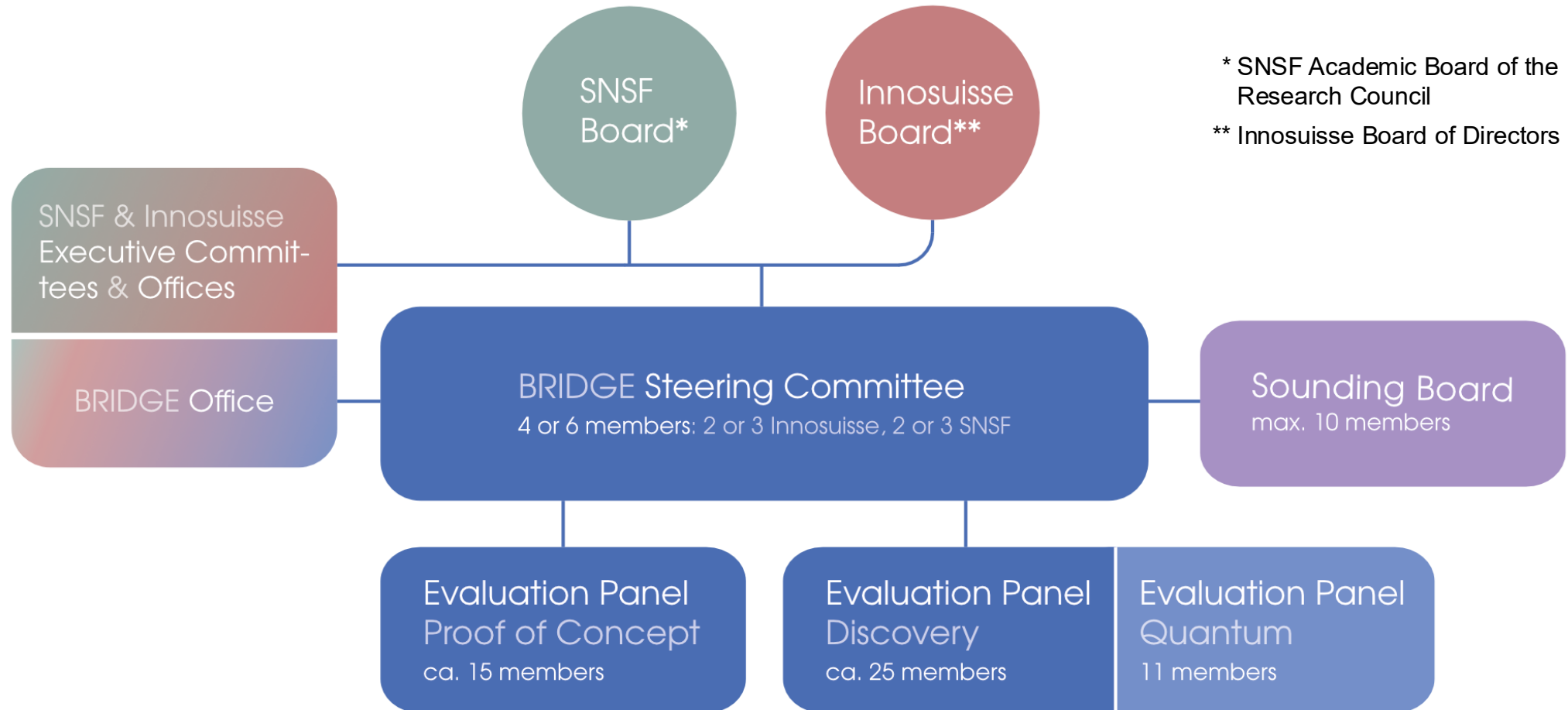
Building Bridges

https://www.snf.ch/media/de/MidiFiP2DarHMDIS/BRIDGE_presentation_general.pdf

Complete the funding portfolio



BRIDGE governance



Goal of the **program**

« Turn scientific results into economic or societal innovation »

BRIDGE...

- ... fosters the economic and societal potential of scientific research,
- ... supports projects in the critical precompetitive phase that have a clear vision of potential application,
- ... facilitates cooperation between Universities, ETHs, research institutes, and Universities of Applied Sciences, Universities of teacher education.

Two lines of funding

Proof of Concept

- Scientific results developed into a product or an application
- Young researchers on their way to entrepreneurship or willing to implement their research findings with an economic or social partner
- Open to all types of innovation

Discovery

- Interaction between basic and applied research to realise the innovation potential of scientific results
- Importance of the societal and economic impact
- Projects may cover any type of innovation or research field



Proof of Concept

Sébastien Le Fouest

Vertical-axis wind turbine performance enhancement using a cyber-physical system

→ [EPFL](#) | → windworks

Image: Alain Herzog / EPFL

Proof of Concept

Details of the funding scheme

Eligibility criteria for the applicants

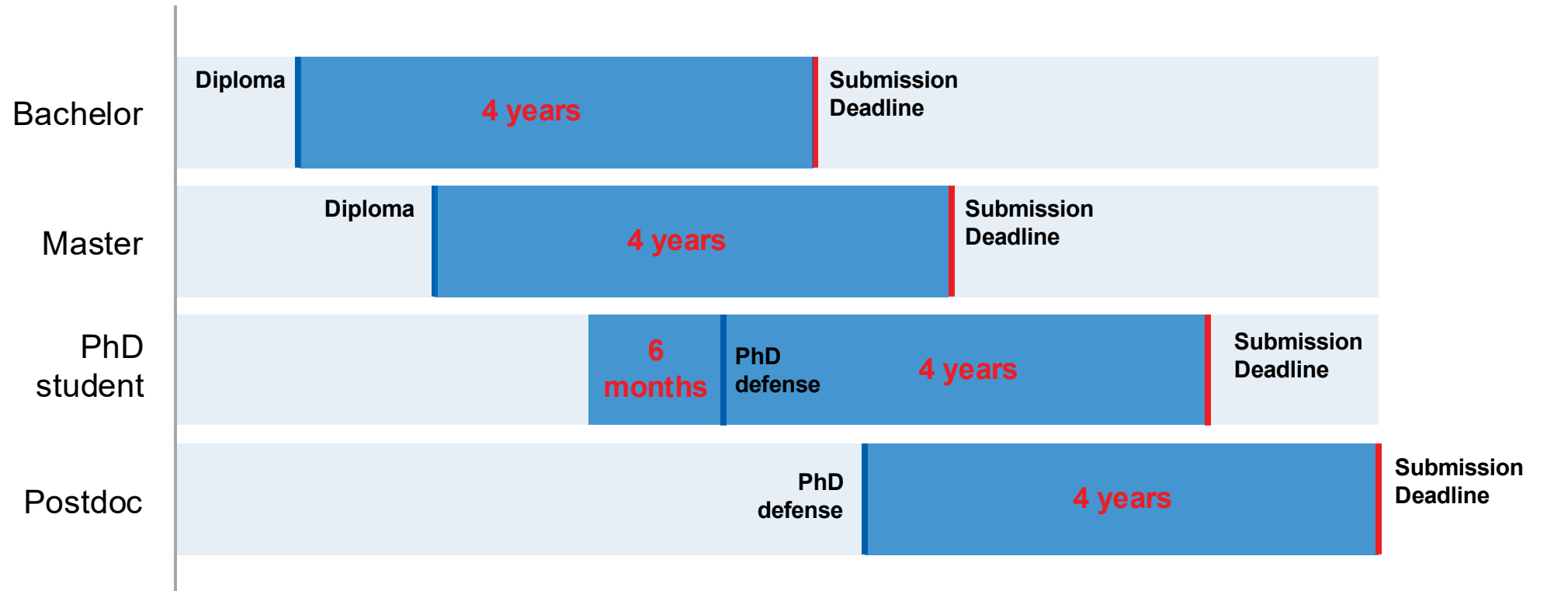
- Early stage of career (bachelor's or master's degree, doctoral students, PhD degree obtained within the last four years)
- Support by a Swiss research institution
- Applicants dedicate their full time to the project

Requirements for the project

- Based on the applicants' own research results or on research results they have substantially contributed to
- The underlying science has been peer-reviewed or documented by publications or another record of achievement (e.g. bachelor's, master's or doctoral thesis, thesis presentation, scientific publication, patent)
- Projects may cover any type of innovation or research field

Requirements for applicants

Eligibility windows



Proof of Concept

Details of the funding scheme

- Up to 4 calls per year
- Projects are submitted by a single applicant

Eligible costs

- Budget of project: max. 130'000 CHF per year
- 100% of applicant's salary (calculated on the basis of current rates at the host institution)
- Costs directly related to the realisation of the project

Duration

12 months (extension of up to 6 additional months exceptionally possible)

Overhead

max. 15% overhead paid to the host institution

Proof of Concept

Evaluation criteria

Quality of the project

- **Innovative potential:** expected **economical or societal impact** for the envisioned innovation, product or service
- **Feasibility of project**
- **Implementation plan**

Qualification of applicant

- Appropriate level of innovation-based, entrepreneurial and managerial **competences of the applicant**, and **motivation to implement**

Proof of Concept

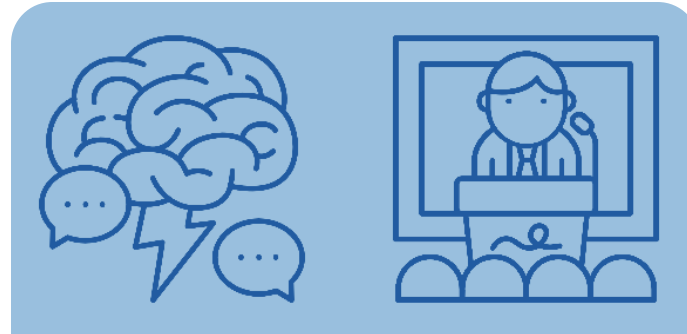
Evaluation procedure



Submission



Formal Check



Qualitative Evaluation



Decision

Level 1

Submitted
Proposal

Level 2

Presentation
& Interview

Duration from submission to funding decision: **3 months**

A woman with long dark hair, wearing a white lab coat, is smiling and holding a wooden stick. She is standing next to a large pile of PET bottles that are being shredded in a machine. The machine has a green and orange handle. The background is a large, wrinkled, light-colored tarp.

Proof of Concept **Support**

Samantha Anderson

Radically Enhanced Room Temperature Degradation of PET

→ EPFL | → depoly

Image: www.pme.ch

Proof of Concept

Additional support

Assisted patent searches

BRIDGE Fellows can request an [assisted patent search for research and innovation](#)

Support for women

BRIDGE supports career development and network building for the next generation of female researchers through the SNSF's [Gender Equality Grants](#).

Support for parents working on the project

BRIDGE provides SNSF's [Flexibility Grants](#) to help researchers better balance their childcare responsibilities with their scientific work and academic careers.

Proof of Concept

Additional support

BRIDGE Coaching

A coaching limited to 10h is offered to all BRIDGE fellows

Innosuisse support

- BRIDGE fellows can take part in the Innosuisse [Start-up Training](#) programme, from Module 2 onwards
- Through the Innosuisse [Start-up Coaching](#) programme, start-ups can attend specialist international trade fairs either as visitors or exhibitors

A photograph of three individuals standing in a lush banana grove under a bright sky. On the left, a person wears a yellow headwrap, yellow sunglasses, a yellow beaded necklace, a yellow knitted vest over a white shirt, and a black belt. In the center, a person wears red sunglasses, a red knitted vest over a black top, and a black belt. On the right, a person wears blue sunglasses, a blue patterned headwrap, a blue knitted vest over a white shirt, and a black belt. All three are wearing prosthetic lower limbs made of recycled plastic, which are visible at the bottom of the frame. The background is filled with large green banana leaves.

Proof of Concept **Application**

Simon Oschwald

Project Circleg – Affordable lower-limb prosthetic system made of recycled plastic

→ [circleg](https://www.circleg.org)

Image: www.circleg.world

Proof of Concept Application

A good application is...

Concrete

- Clear base of research/scientific results exists
- Market and/or societal interest exist; product, application or service has been defined
- Access to the market/end users and/or implementation partners has been described

Clear

- Innovative content is clearly indicated, and innovation is clearly defined
- Project plan is comprehensible
- Tasks are clearly defined and meaningful
- Milestones are reasonably set and goals are quantitatively described

Consistent

- Project planning and financial planning are consistent
- Timetable and resource allocation are realistic

Proof of Concept Application

Dos and Don'ts

Dos

- Provide answer to the problem (start from the end)
- Follow the structure of the template (do not leave blank)
- Know and follow the evaluation criteria (self-evaluation)
- Start early (necessary documents and signatures, proofreading)

Don'ts

- Focus only on the scientific part
- Neglect “impact” and “implementation”
- Hope for exceptions to the rules
- Imply too much

Proof of Concept Application

If you are not successful

Important

- Carefully read the decision letter
- If you have questions, ask the BRIDGE Office to clarify

Can you improve your application?

- If rejected, you can apply a second time for the same project, provided you still meet all the formal requirements
- List and explain the changes made to the former version of the project



BRIDGE Status 2017-2025

Patricia Frei

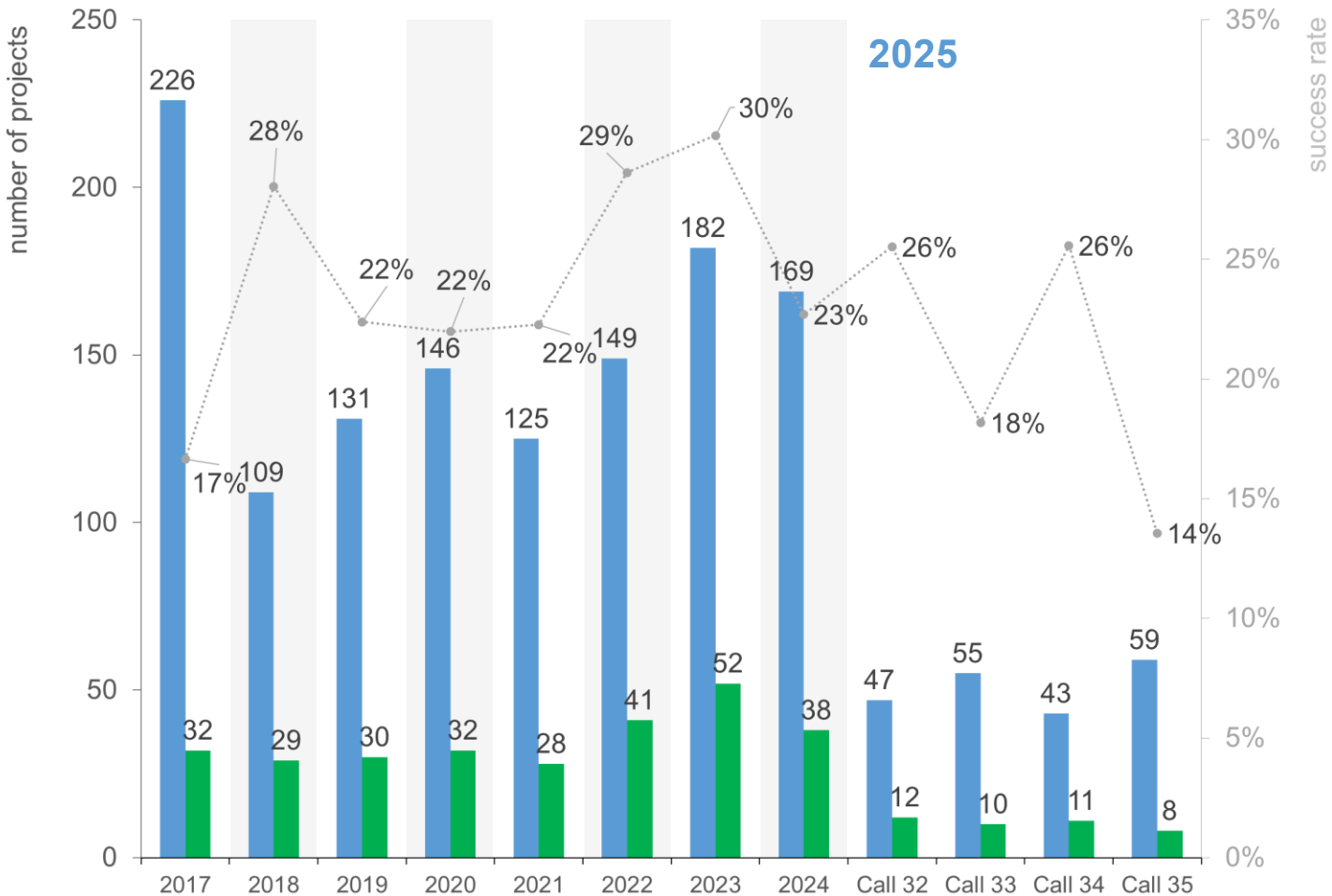
Migrant Birth Kit

→ [BFH](#) | → [ONEDU](#)

Image: [ONEDU](#)

Proof of Concept **Current Status**

Submitted and accepted projects



2017-2020 | 16 calls

2021-2024 | 18 calls

Yearly submitted and accepted proposals and average success rates

■ submitted

♀ 372 (26%)

♂ 1073 (74%)

■ funded

♀ 81 (25%)

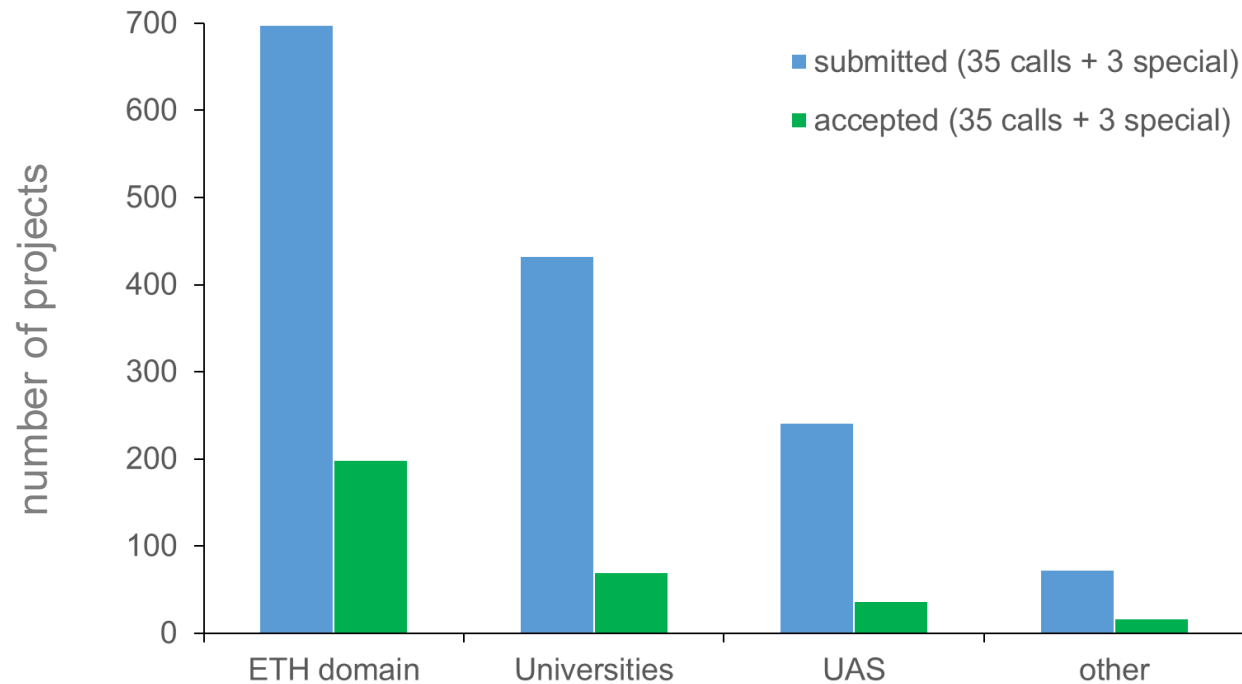
♂ 242 (75%)

··· success rate

(overall average: 24.0%)

Proof of Concept **Current Status**

Submitted/funded projects by institutions 2017-2025

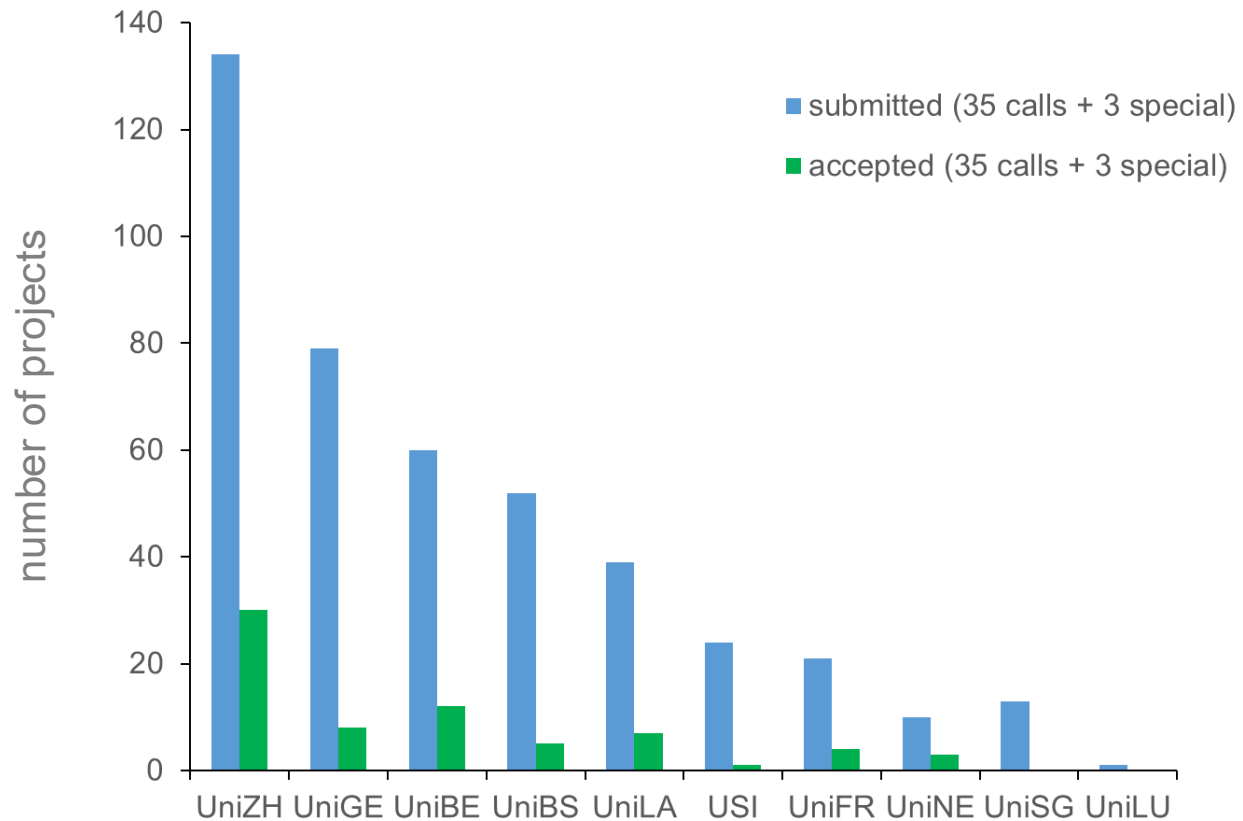


Success rates

ETH domain	29%
Uni	16%
UAS	15%
Other	23%

Proof of Concept **Current Status**

Submitted/funded projects by universities 2017-2024

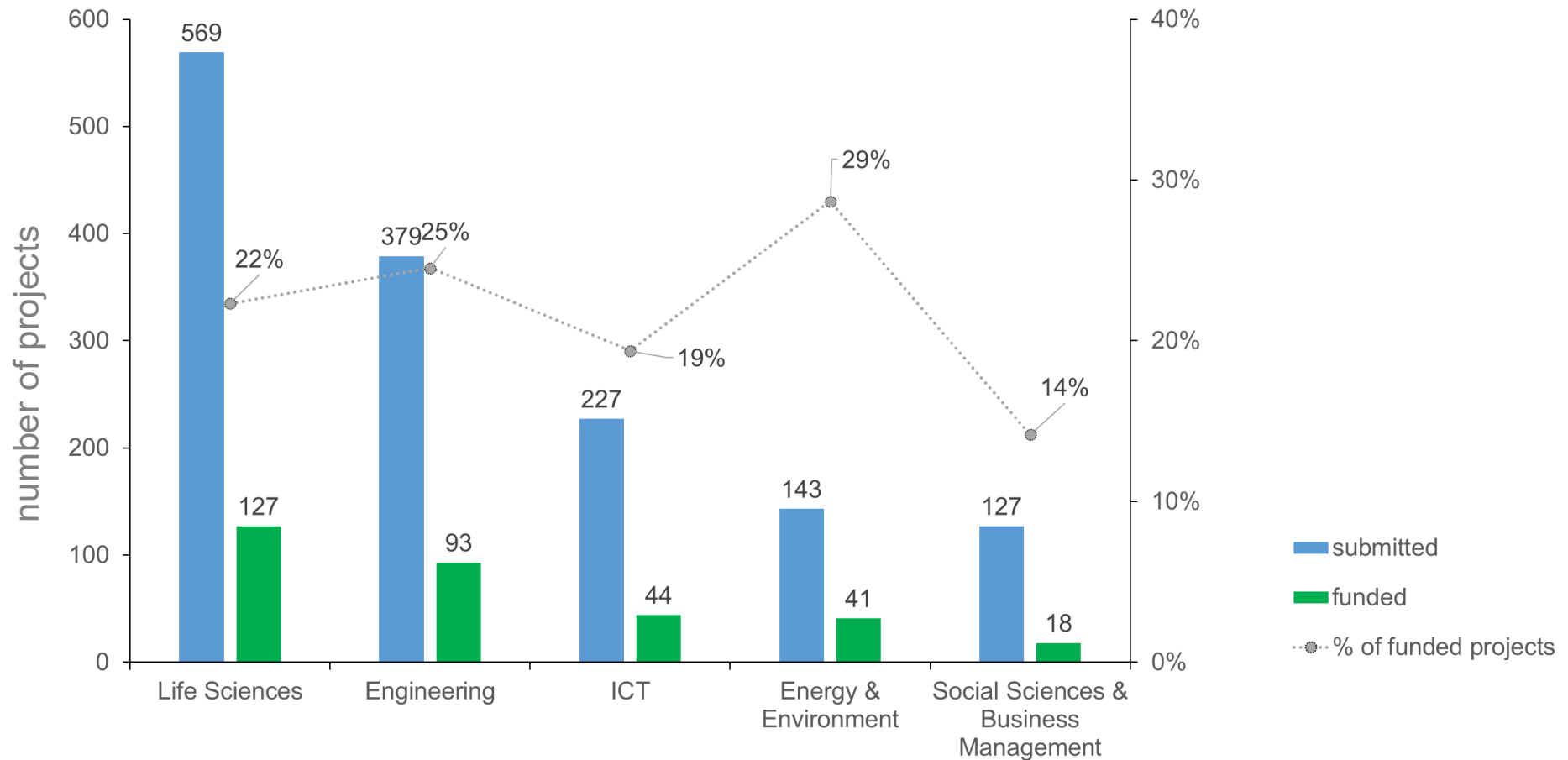


Success rates

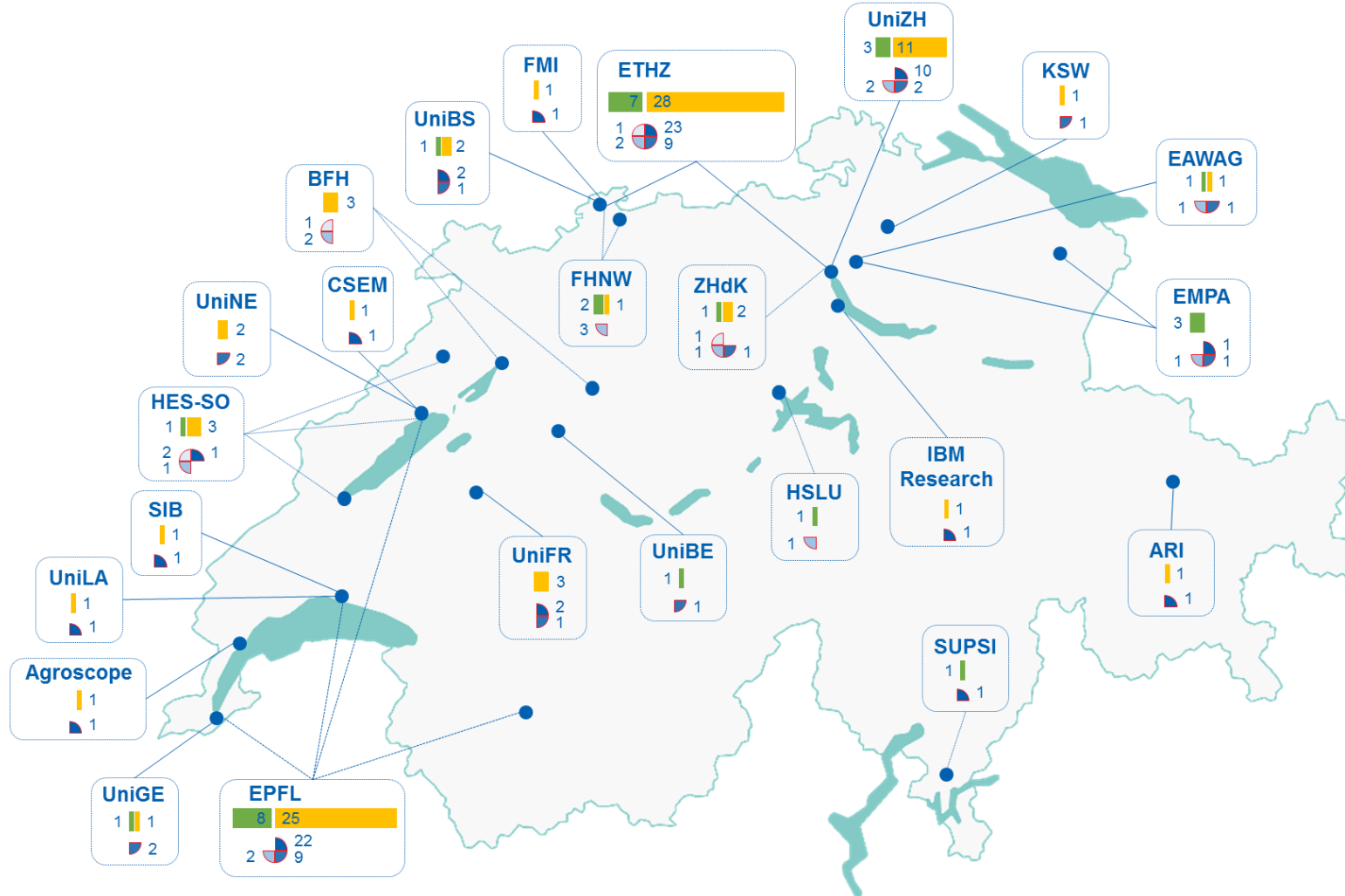
- UniZH: 22%
- **UniGE: 10%**
- UniBE: 20%
- UniBS: 10%
- UniLA: 18%
- USI: 4%
- UniFR: 19%
- UniNE: 30%
- UniSG: 0%

Proof of Concept Current Status

Disciplines (calls 2017-2025)



Proof of Concept **financed projects** 2017-2020



16 calls
612 applications
121 projects approved

Total budget approved: **15.2 mioCHF**
Average grant/project: **126 kCHF**

Host institution

Number of supported ...

... women ... men
... bachelors ... postdocs
... masters ... PhD students

Engineering



ICT



Life Sciences



90 start-ups

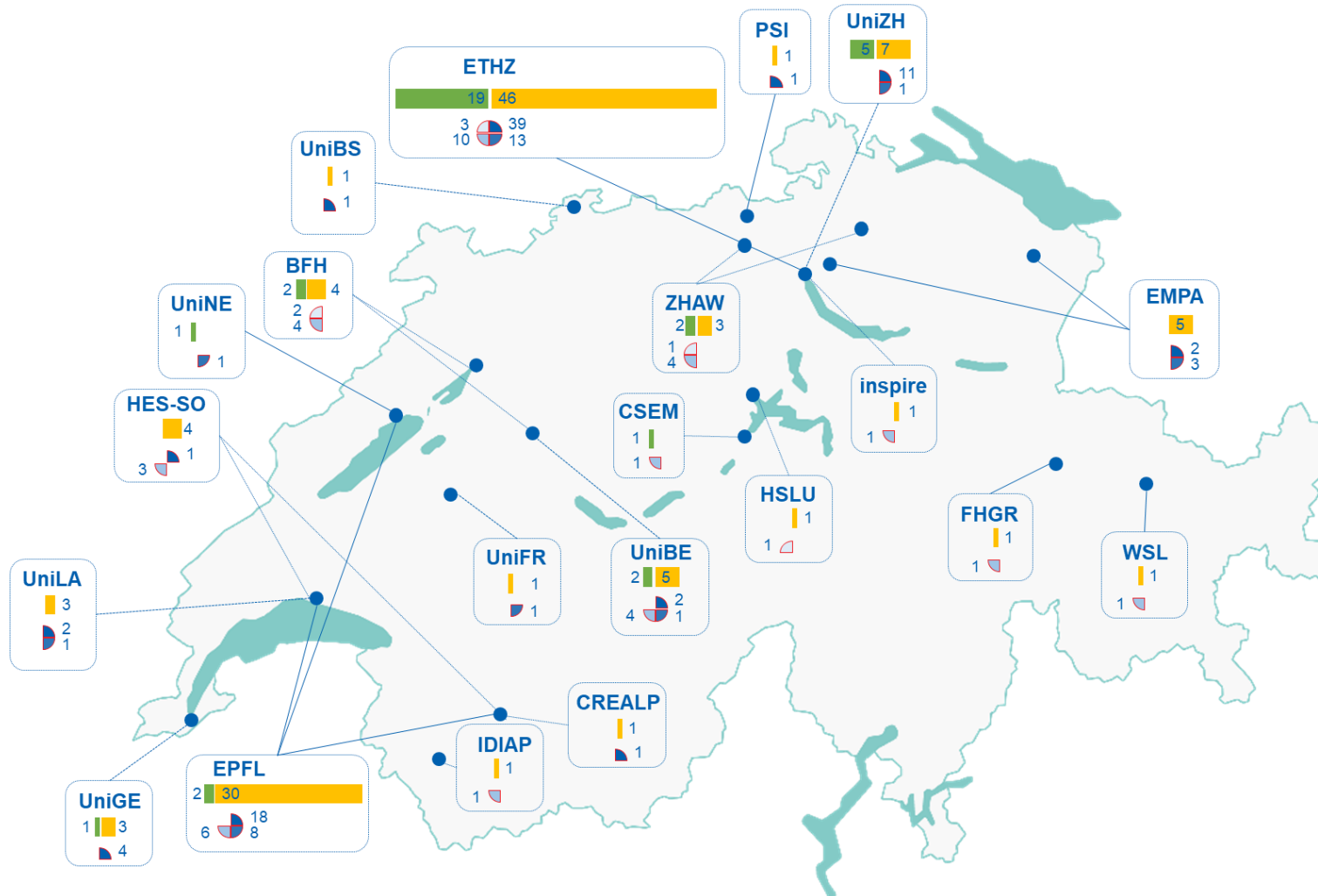
out of 121 BRIDGE Proof of Concept projects
(16 calls 2017-2020)

Energy & Environment



Social Sciences

Proof of Concept **financed projects** 2021-2024



15 calls + 3 special calls
625 applications
154 projects approved

Total budget approved: 19.7 mioCHF
Average grant/project: 128 kCHF

Host institution

Number of supported ...

... women ... men
... bachelors ... postdocs
... masters ... PhD students

Engineering



ICT



Life Sciences



81 start-ups

out of 152 BRIDGE Proof of Concept projects
(18 calls 2021-2024)





BRIDGE Next Calls

Florian Jakober

Swiss Food Co-op Network

→ [BFH](#) | → [koop.cc](#)

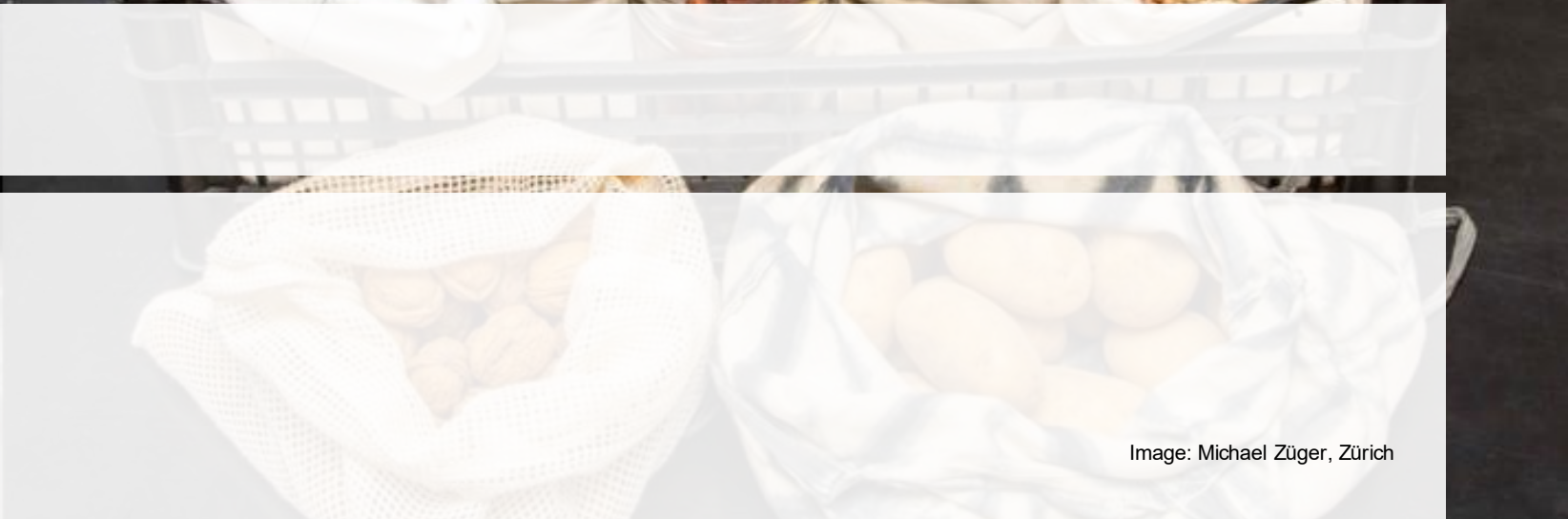


Image: Michael Züger, Zürich

Submission Deadlines

Deadline always 17:00 Swiss local time

Proof of Concept

- **37th call: 2 March 2026**
- **38th call : 1 June 2026**
- **39th call : 1 September 2026**
- **40th call: 1 December 2026**

Interviews

11/12 May 2026

20/21 August 2026

11/12 November 2026

February 2027

Check our website: www.bridge.ch

Proof of Concept Proposal

Proof of Concept

How to apply?

www.bridge.ch

- **Proof of Concept**
- **Section Documents:**
 - ⇒ Regulations
 - ⇒ Checklist
 - ⇒ Template for project description

<https://www.mysnf.ch/newuser.aspx>

- **Section Registration** if you are a new user

Proof of Concept

How to apply?

- **Creation of the mySNF account at least one week before the deadline**
- **Take the time to prepare all the requested documents and information:**
 - Commitment letter from the future host institute (*template*)
 - Reference Letter
 - Your CV (following the [standardised template](#))
 - CV of the Head of the host research group
 - **Project description** (*template*)
 - IP overview (*template*)
 - Etc. (cf. checklist and mySNF)

https://www.snf.ch/media/en/DZdallZws1UxpN9N/BRIDGE_PoC_checklist.pdf



BRIDGE



Schweizerische Eidgenossenschaft
Confédération suisse
Confederazione Svizzera
Confederaziun svizra

Swiss Confederation

Innosuisse – Swiss Innovation Agency

BRIDGE Office Team

Christian Brunner
Thomas Di Franco
Nicole Jacquemin-Rhyn

Tel. +41 31 308 23 67

www.bridge.ch | office@bridge.ch



Innosuisse
Einsteinstrasse 2
CH-3003 Bern

Swiss National Science Foundation (SNSF)
Wildhainweg 3
PO Box
CH-3001 Bern

BRIDGE Steering Committee 2026



Innosuisse

Toufann Chaudhuri (DLMS User Association | Engineering)

Bettina Ernst (Biotech Entrepreneur and Investor | Life Sciences)



SNSF

chair Anna Lisa Martin-Niedecken (ZHdK | Design)

Matthias Stuber (Uni Lausanne, CHUV | Life Sciences)



Advisory function

Dave Brown (Angel Investor and Mentor | ICT) (**chair EP PoC**)

Emine Cagin (Heidelberg Instruments | Engineering) (**chair EP Discovery**)

Proof of Concept Evaluation Panel 2026 (19 members)

Life Sciences

Vincent Forster	Forlight Bio
Arianna Calcinotto	USI
Jacques Schrenzel	UniGE

ad hoc

Ursula Graf-Hausner	3dcellculture
Anja Harmeier	Rewind Therapeutics

ICT

<u>Dave Brown</u>	loganbrown
Lisa Falco	Zühlke Group
Olga Fink	EPFL

Environment

Cara Tobin	C Greene Solutions
-------------------	--------------------

Engineering

James Miners	Fongit
Teodoro Laino	IBM Research
Daniele Inaudi	Smartec / Roctest
Katrin Lohan	OST

Micro-/Nanotechnologies

Christofer Hierold	ETHZ
Giovanni Leo	EFI Lake Geneva Ventures
René Rossi	EMPA

Social Sciences

Paola Ghillani	Paola Ghillani & Friends
Maria Caiata Zufferey	SUPSI

ad hoc

Lesley Spiegel	ETHZ
-----------------------	------