

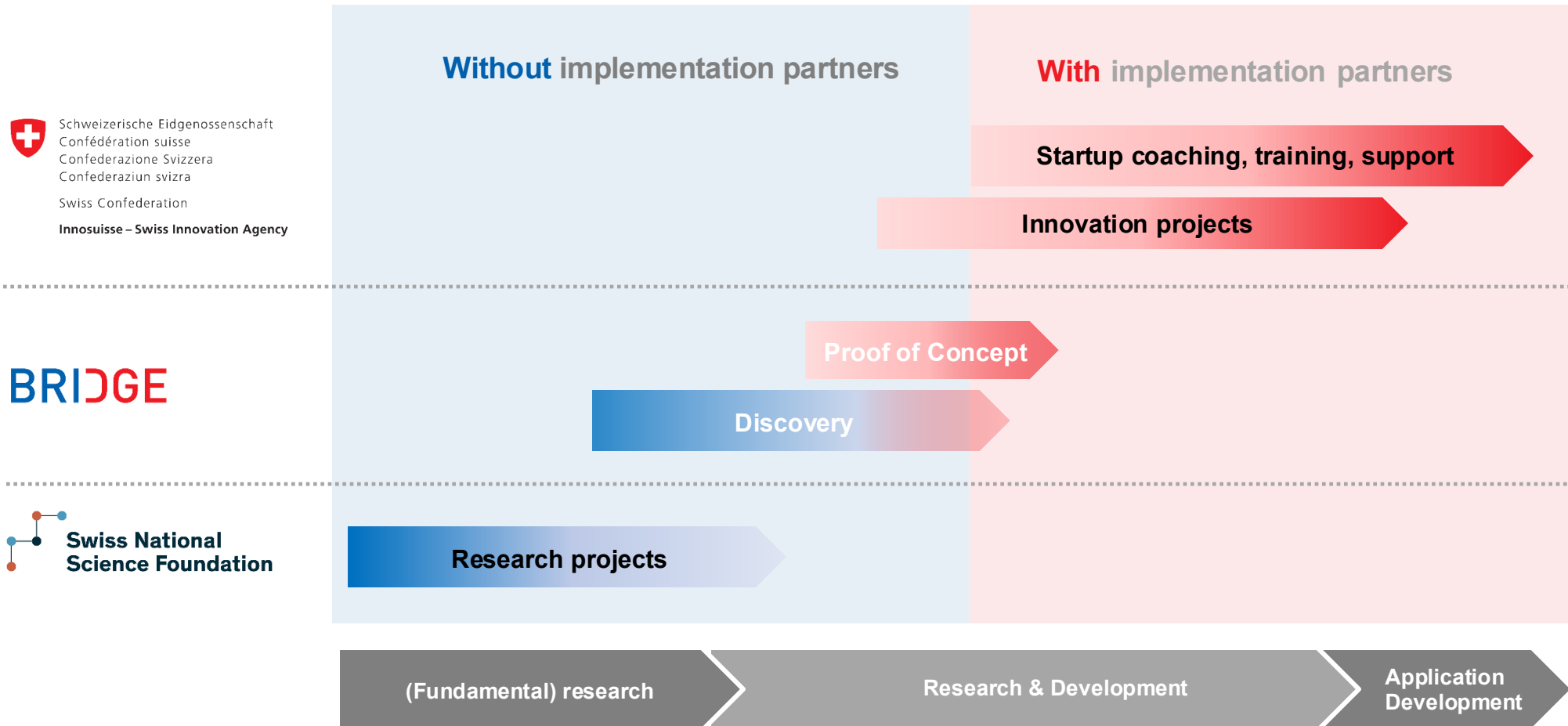
# BRIDGE



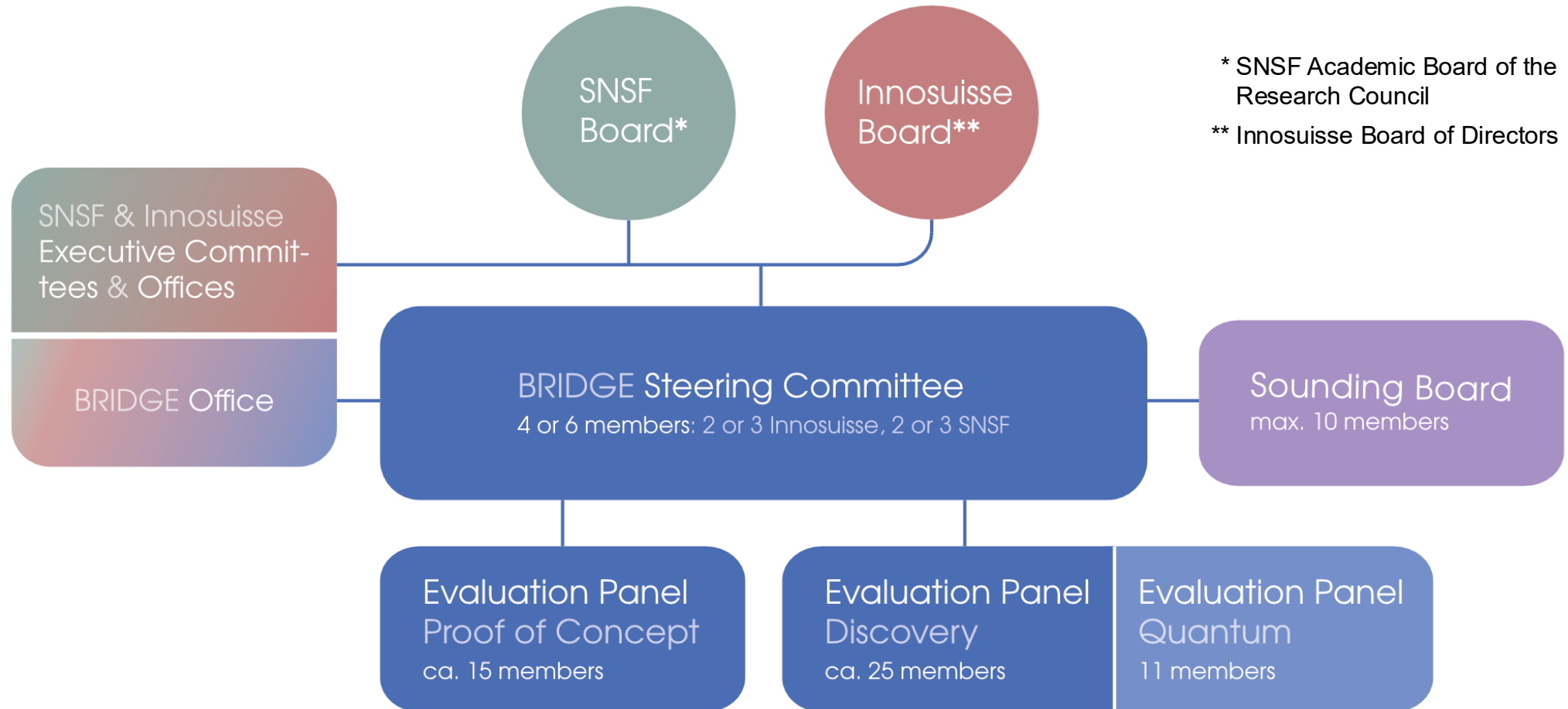
## Building Bridges

[https://www.snf.ch/media/de/MidiFiP2DarHMDIS/BRIDGE\\_presentation\\_general.pdf](https://www.snf.ch/media/de/MidiFiP2DarHMDIS/BRIDGE_presentation_general.pdf)

# Complete the funding portfolio



# BRIDGE governance



# Goal of the **program**

« Turn scientific results into economic or societal innovation »

## **BRIDGE...**

- ... fosters the economic and societal potential of scientific research
- ... supports projects in the critical precompetitive phase that have a clear vision of potential application
- ... facilitates cooperation between Universities, ETHs, research institutes, and Universities of Applied Sciences, Universities of teacher education

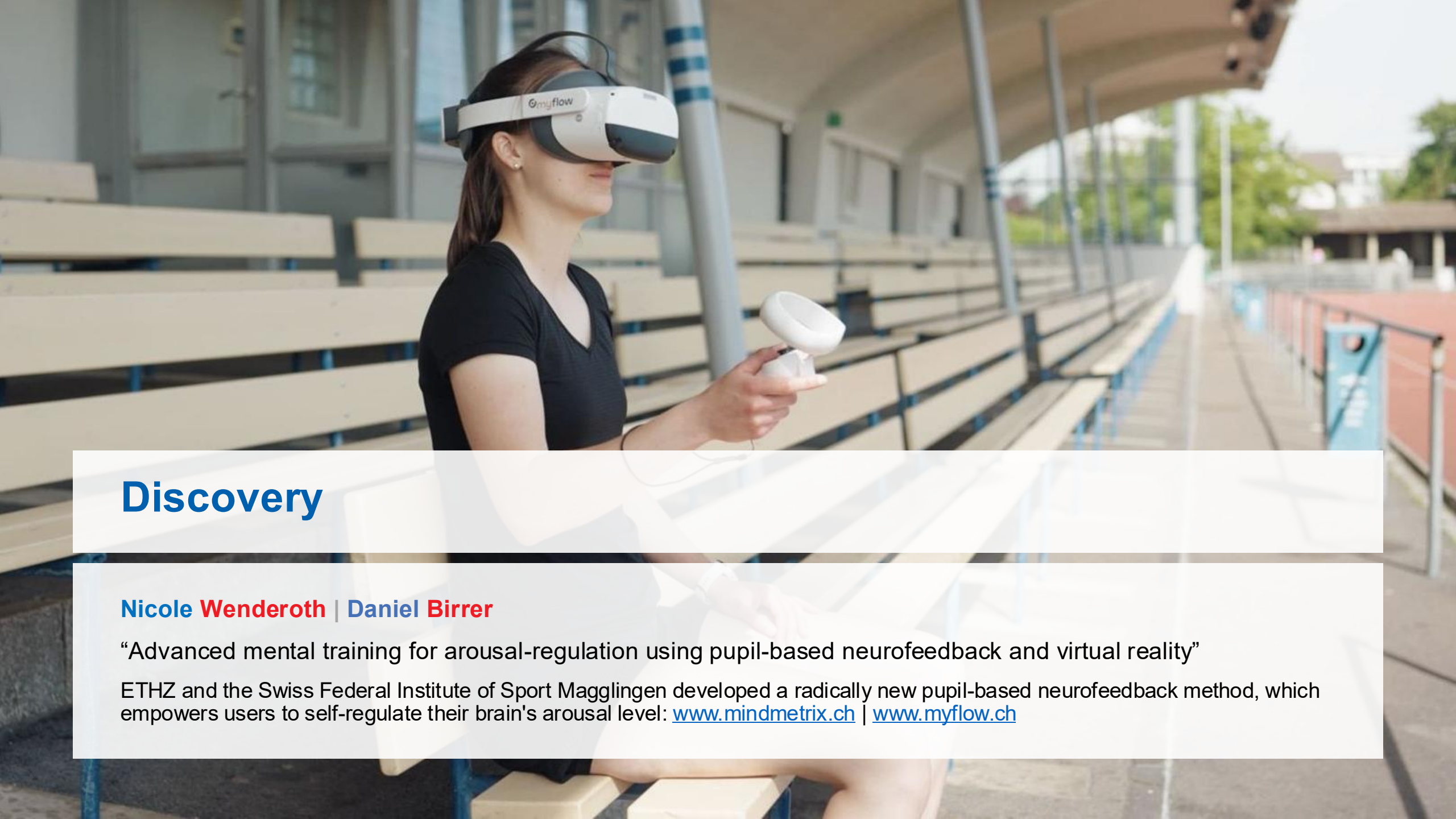
# Two lines of funding

## Proof of Concept

- Scientific results developed into a product or an application
- Young researchers on their way to entrepreneurship or willing to implement their research findings
- Open to all types of innovation

## Discovery

- Interaction between basic and applied research to realise the innovation potential of scientific results
- Importance of the societal and economic impact
- Projects may cover any type of innovation or research field



## Discovery

**Nicole Wenderoth** | **Daniel Birrer**

“Advanced mental training for arousal-regulation using pupil-based neurofeedback and virtual reality”

ETHZ and the Swiss Federal Institute of Sport Magglingen developed a radically new pupil-based neurofeedback method, which empowers users to self-regulate their brain's arousal level: [www.mindmetrix.ch](http://www.mindmetrix.ch) | [www.myflow.ch](http://www.myflow.ch)

# Discovery

## Details of the funding scheme

### Eligibility criteria for the applicants

- Experienced researchers at a Swiss research institution

### Requirements for the project

- Integration of excellent science and high-impact innovation
- Research is at a stage where the risk is too large for implementation partners to co-fund
- Projects may cover any type of innovation or research field
- Up to 3 applicants of independent research groups with a clear vision of innovation

# Discovery

## Details of the funding scheme

- One call per year
- One project per applicant

### Eligible costs

Project budget: max. 850'000 CHF per applicants for 4 years

- Salaries of project personnel, excluding the salary of the applicants (special conditions may apply for UAS and CSEM researchers)
- Project costs directly related to the project

### Duration

Up to 4 years

### Overhead

max. 15% overhead paid to the host institution

# Discovery

## Details of the funding scheme

### Quality of the project

- **High scientific quality** going beyond state of the art
- **Innovative potential:** credible vision of the potential societal, environmental, technological or economical **impact** and its implementation
- **Feasibility**
- Convincing **roadmap towards implementation**

### Qualification of applicant(s)

- Scientific and **innovation-oriented, entrepreneurial** as well as management competence of the applicants
- Added value of the **consortium**

# Discovery

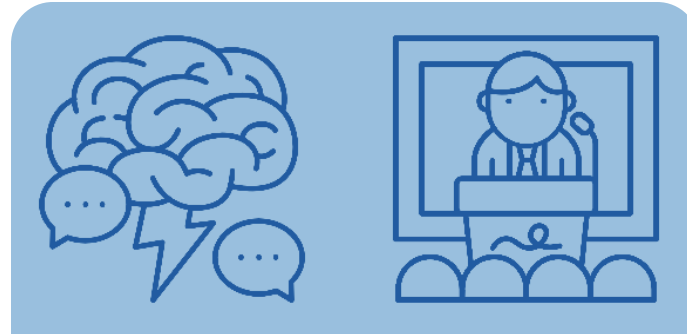
## Evaluation procedure



Submission



Formal Check



**Qualitative Evaluation**



Decision

### Level 1

Submitted  
Proposal  
•  
External  
reviews

### Level 2

Presentation  
& Interview

Duration from submission to funding decision: **6 months**



## Discovery Application

**Yvonne Fabian** | **Dominik Füglistaller** | **Thomas Keller**

“Paddy rice cultivation and biodiversity promotion on wet arable land in Switzerland”

Agroscope and BFH investigate and further develop the cultivation of paddy rice as an alternative, environmentally and climate-friendly cropping method on former peat soils and in regularly waterlogged areas in Switzerland

# Discovery

## Additional support

### Assisted patent searches

- An [assisted patent search for research and innovation](#) can be requested while you are running a BRIDGE project.

### Support for women

- BRIDGE supports career development and network building for the next generation of female researchers through the SNSF's [Gender Equality Grants](#)

### Support for PhDs and postdocs working on the project

- BRIDGE provides SNSF's [Flexibility Grants](#) to help researchers better balance their childcare responsibilities with their scientific work and academic careers

# BRIDGE Application

## Dos and Don'ts

### Dos

- Clearly define your innovation
- Provide answer to the problem (start from the end)
- Follow the structure of the template (do not leave blank)
- Know and follow the evaluation criteria (self-evaluation)
- Start early (necessary documents and signatures, proofreading)

### Don'ts

- Focus only on the scientific part
- Neglect “impact” and “implementation”
- Hope for exceptions to the rules
- Imply too much

# BRIDGE Application

If you are not successful...

**... please first:**

- Read the decision letter carefully
- If you have questions, ask the BRIDGE Office to clarify
- Possibility of asking for reconsideration or of appealing against the decision

**Can you improve your application?**

- If rejected, you can apply a second time for the same project, provided you still meet all the formal requirements
- List and explain the changes made to the former version of the project



## BRIDGE Status 2017-2025

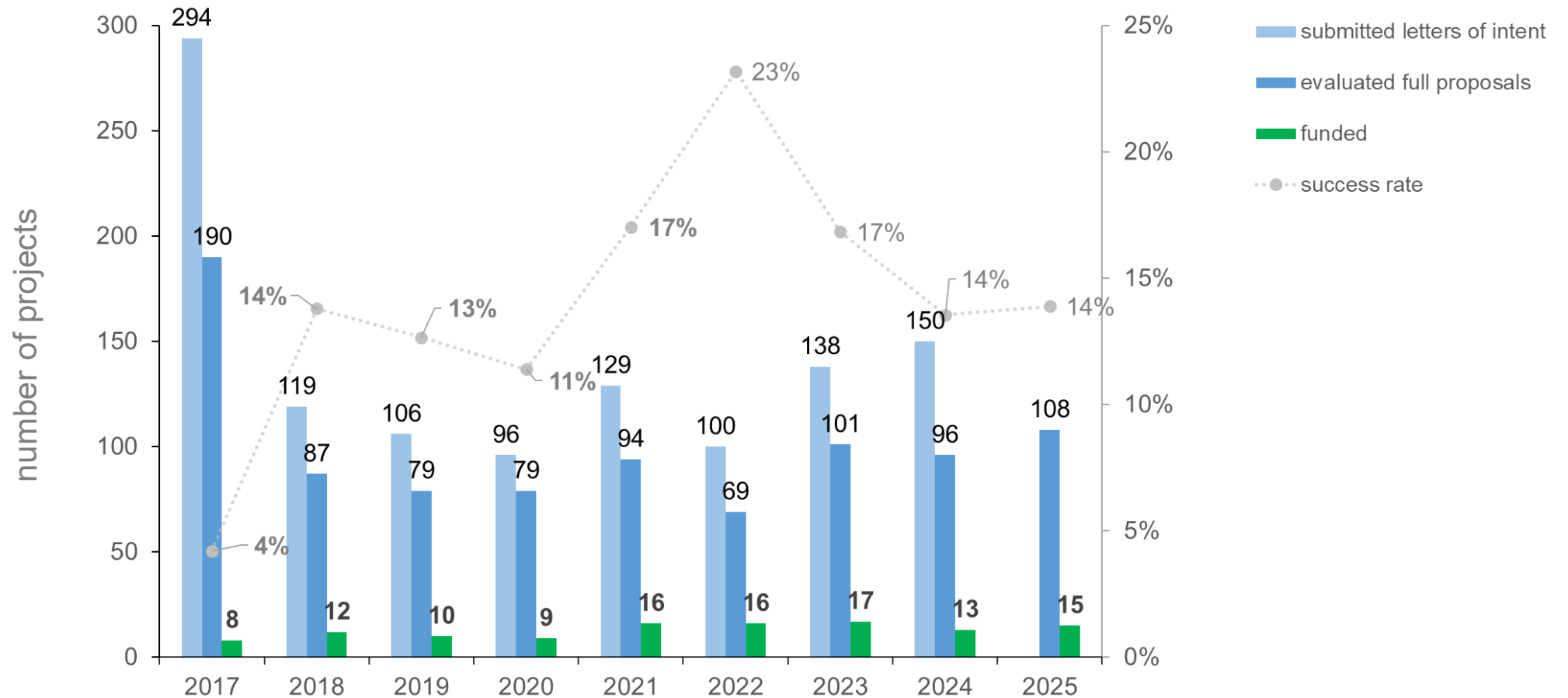
**Daniel Kübler** | **Nenad Stojanovic**

“Swiss Citizens' Assembly: A Democratic Innovation Involving Sortition, Deliberation and Participatory Democracy”

Uni Zurich and Geneva explore complementary forms of democracy and their contribution to solving societal challenges

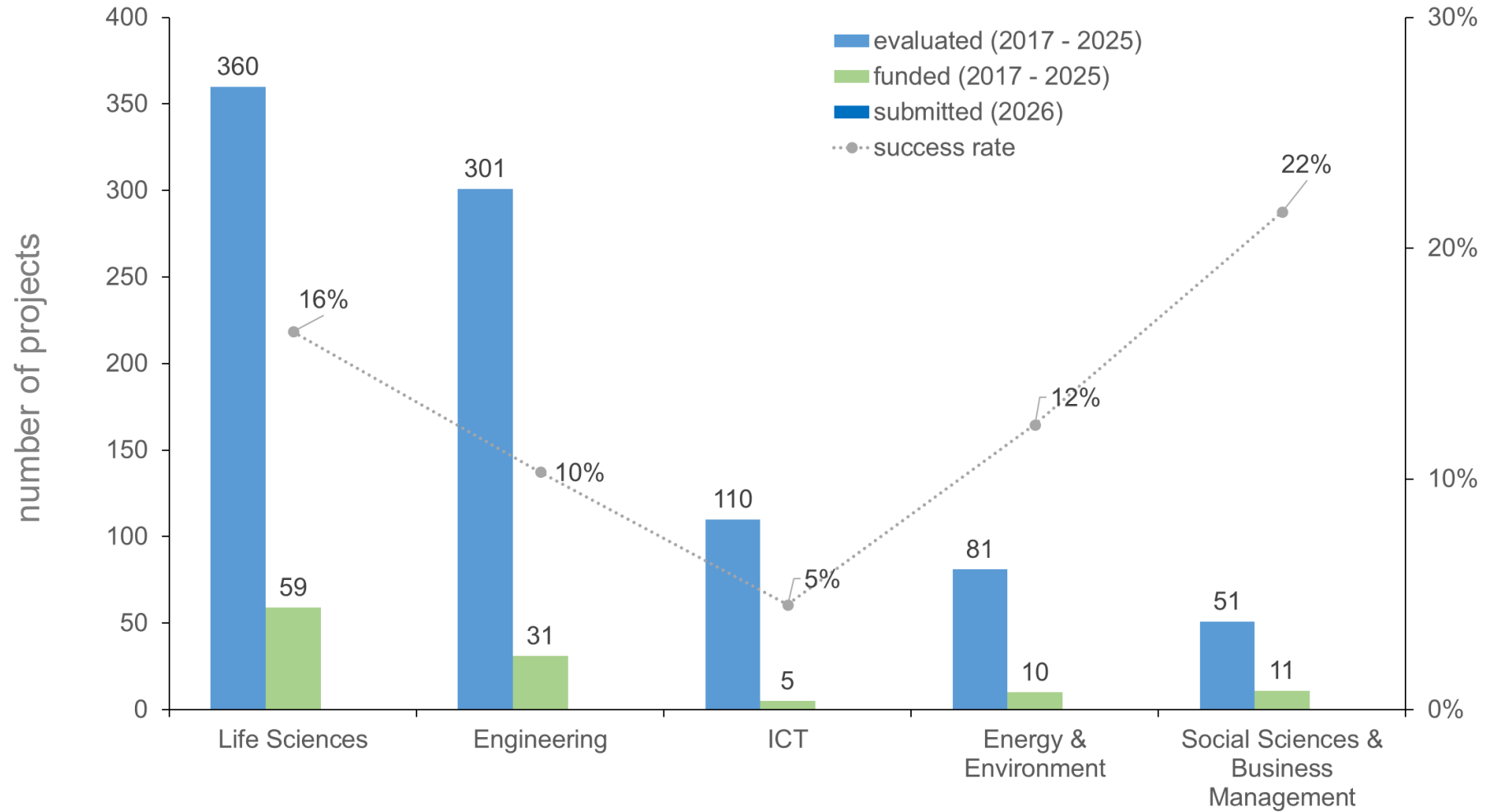
# Discovery Statistics

## Submitted and accepted projects



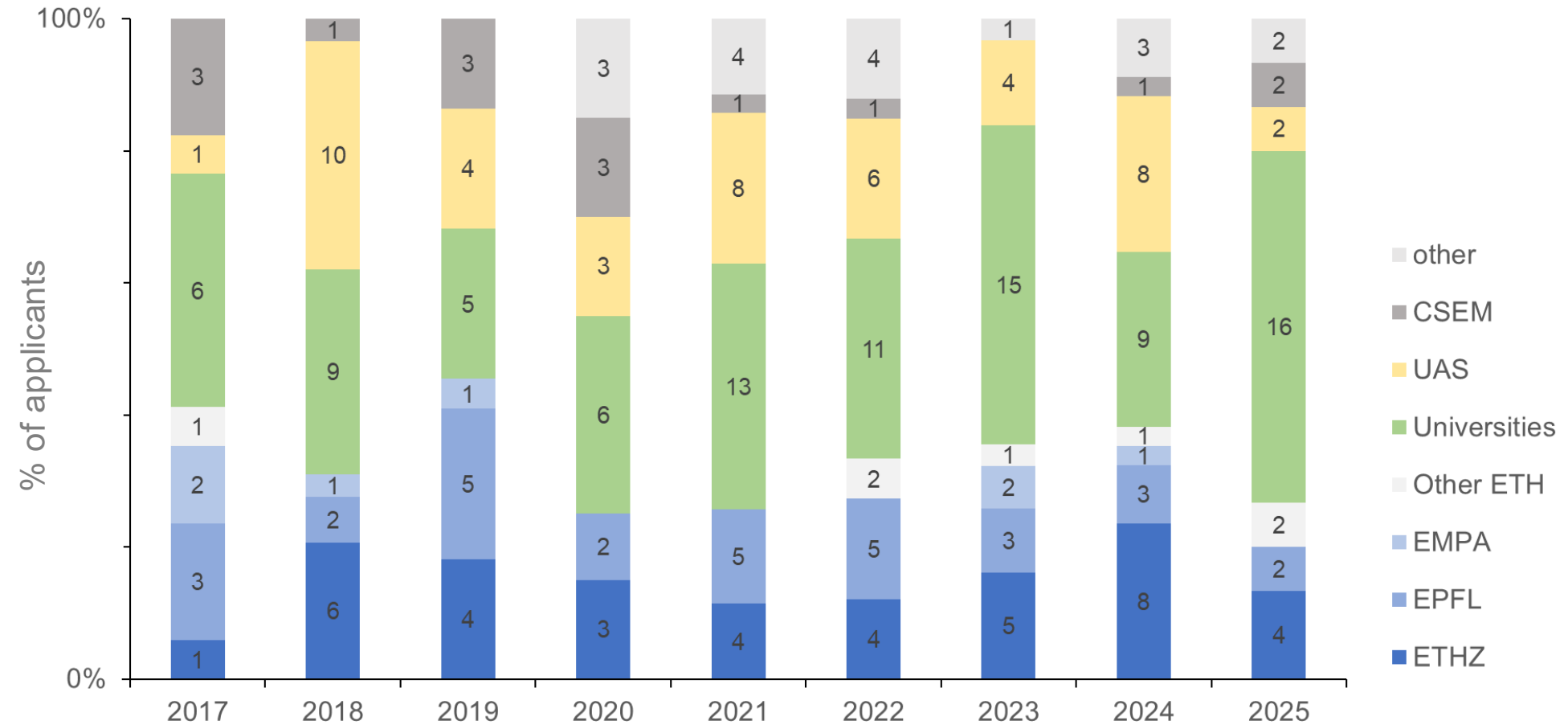
# Discovery Statistics

Disciplines (calls 2017-2025)



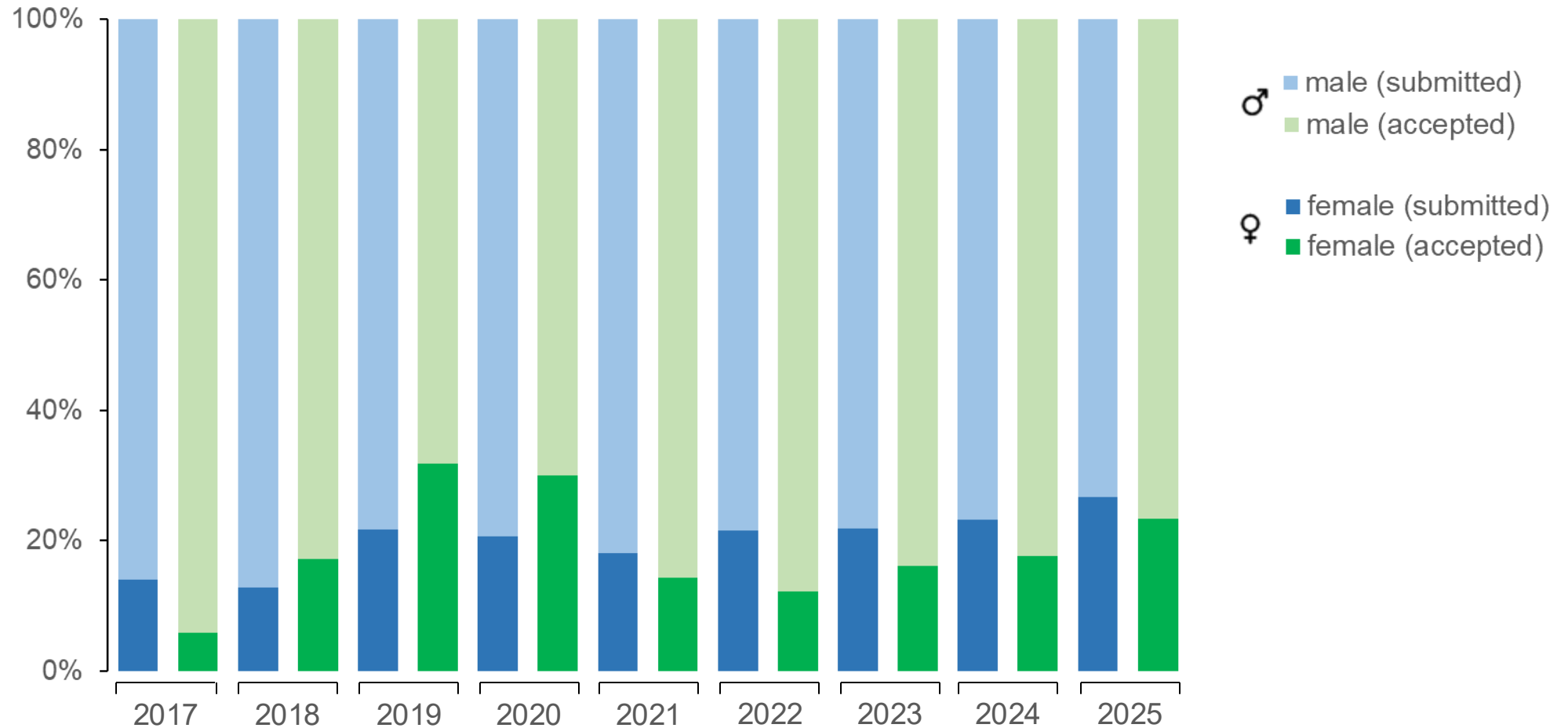
# Discovery Statistics

Involved institutions (all applicants)



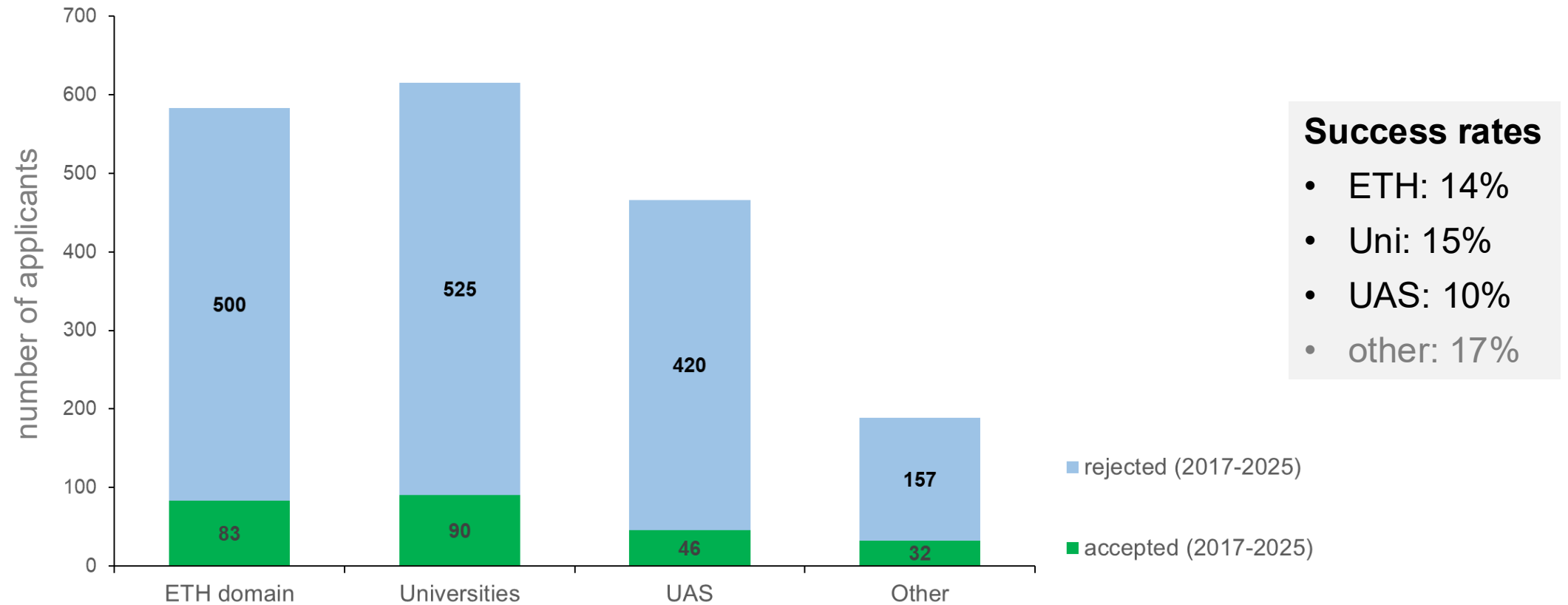
# Discovery Statistics

Gender

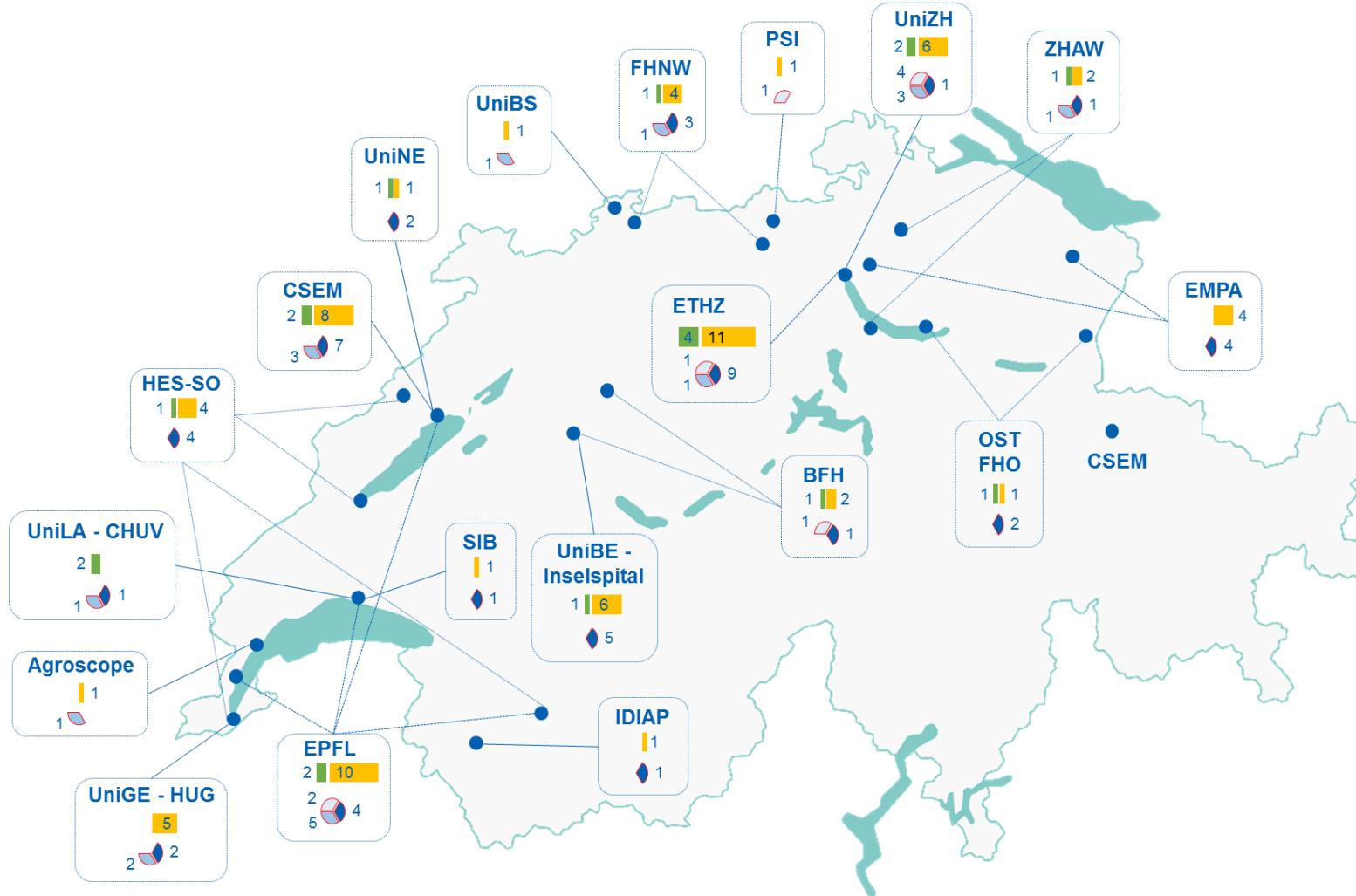


# Discovery information

Submitted/funded projects by applicants and their institutions



# Discovery financed projects 2017-2020



4 calls  
435 applications  
39 projects approved

Total budget approved: **46.5 mioCHF**  
Average grant/project: **1.2 mioCHF**  
Average duration: **43 months**

## Host institution

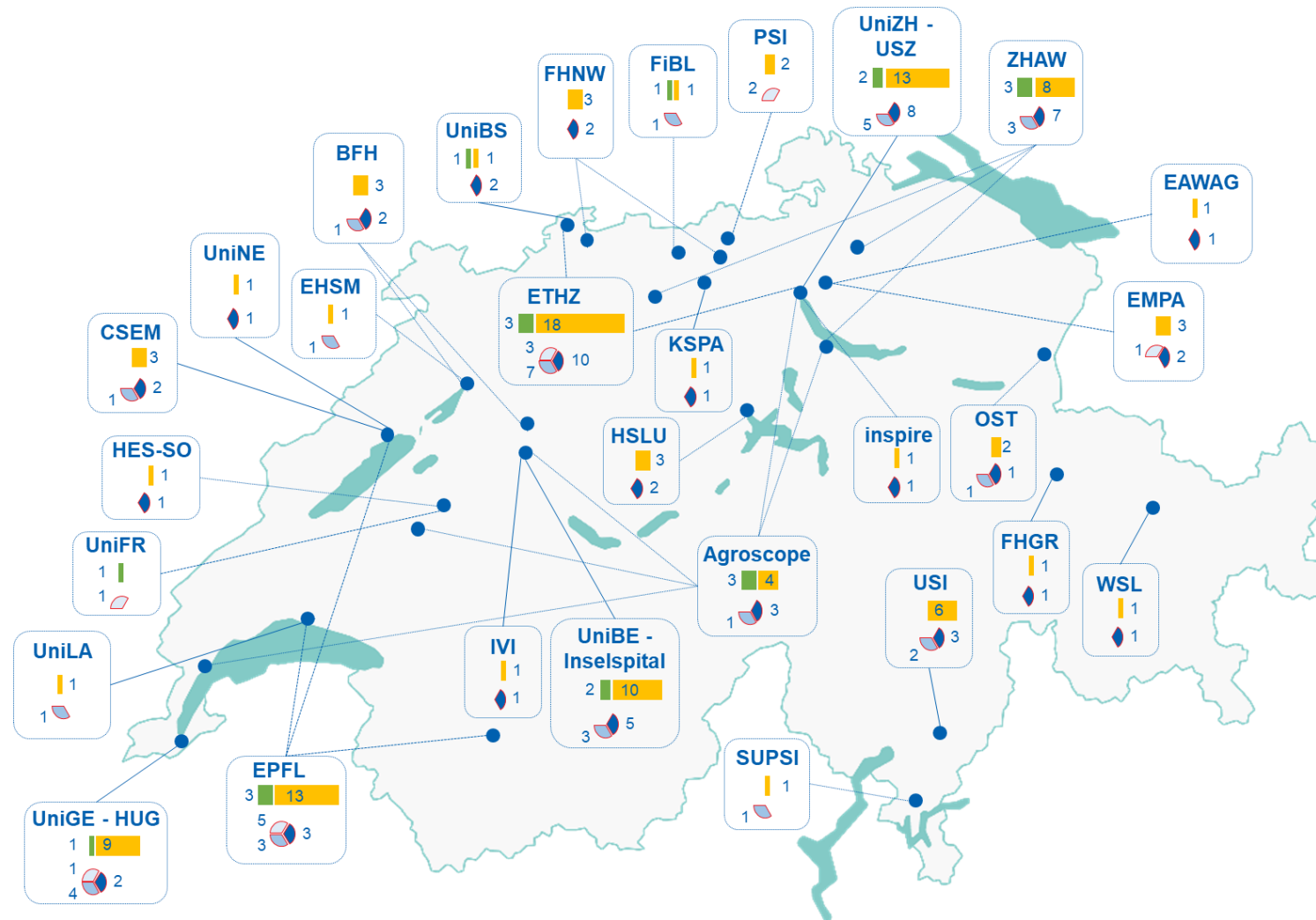
Number of supported ...

... women ... men

Number of projects with ...

... 1 applicant ... 2 applicants ... 3 applicants

# Discovery financed projects 2021-2024



4 calls  
360 applications  
62 projects approved

Total budget approved: **78.0 mioCHF**  
Average grant/project: **1.3 mioCHF**  
Average duration: **43 months**

## Host institution

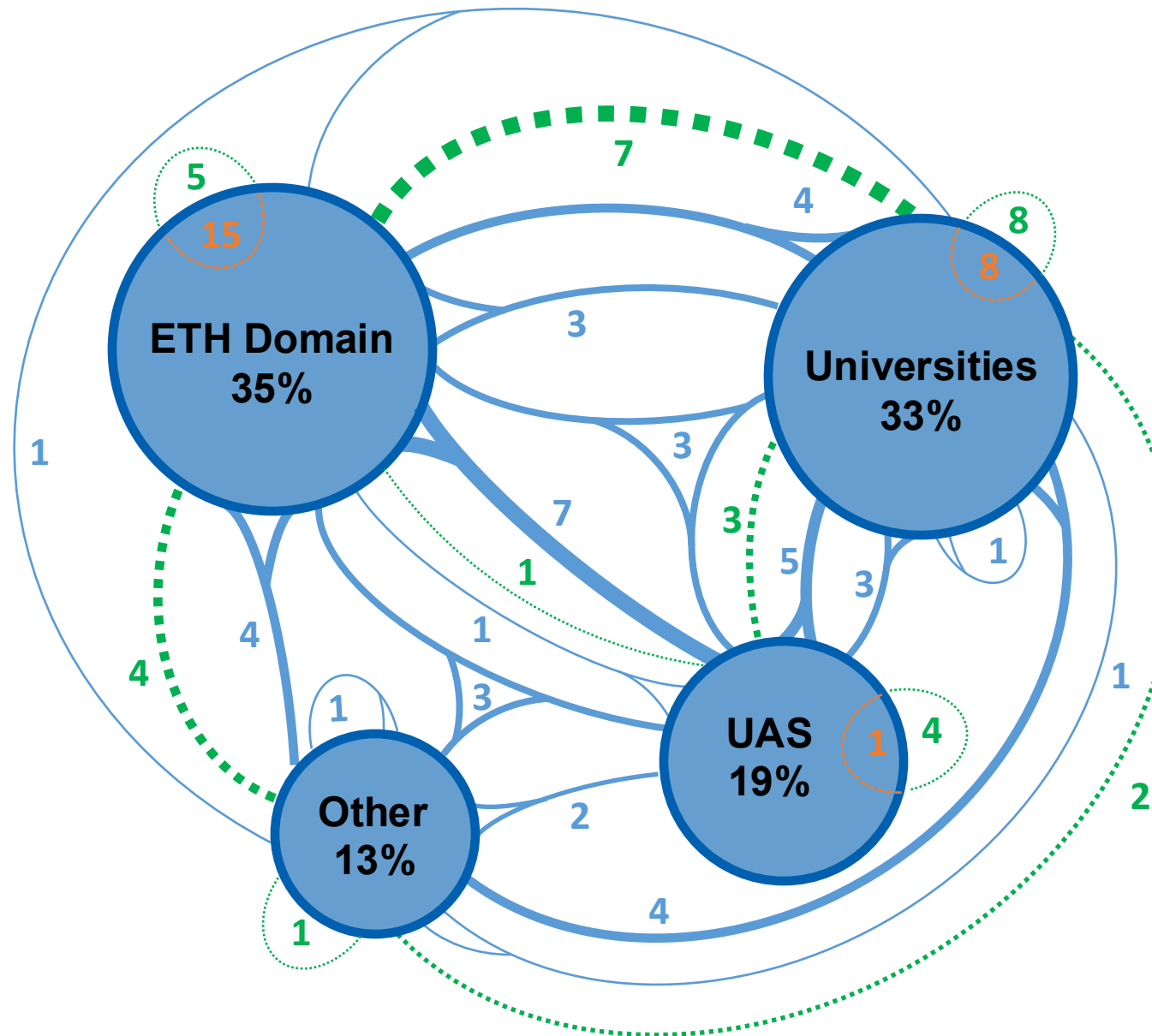
Number of supported ...

... women ... men

Number of projects with ...

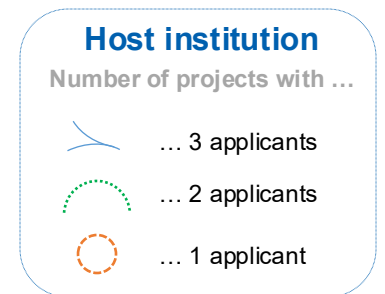
... 1 applicant ... 2 applicants ... 3 applicants

# Discovery **financed projects** 2017-2024



**101** projects approved  
**221** research groups involved  
Average applicant per project: **2.2**

**24** projects with 1 applicant  
**34** projects with 2 applicants  
**43** projects with 3 applicants



# Discovery **financed projects:** outcomes

- **15 start-ups** coming from a Discovery project:



- **Implementation partners** founded by one of the co-applicant:



- **1 association** founded for the implementation:
- Declared use-inspired outputs: **39 Patents**





## BRIDGE Next Calls

**Sebastian Gliga**

“Play it again - Recovering audio, video and data from degraded tapes using X-ray magnetic dichroism”

PSI aims at preventing the permanent loss of 20<sup>th</sup> century audio-visual cultural heritage: using synchrotron X-rays, fragile and/or damaged magnetic tapes are read out in a contactless, non-destructive way, which allows the recovery of analogue and digital information.

# Submission Deadlines

Deadline always 17:00 Swiss local time

## Discovery: 10<sup>th</sup> call

- **Full proposal: 28 April 2026**
- *Interviews: 15/16 October 2026*

Check our website: [www.bridge.ch](http://www.bridge.ch)



# BRIDGE



Schweizerische Eidgenossenschaft  
Confédération suisse  
Confederazione Svizzera  
Confederaziun svizra

Swiss Confederation

**Innosuisse – Swiss Innovation Agency**

# BRIDGE Office Team

Christian Brunner  
Thomas Di Franco  
Nicole Jacquemin-Rhyn

Tel. +41 31 308 23 67

[www.bridge.ch](http://www.bridge.ch) | [office@bridge.ch](mailto:office@bridge.ch)



**Innosuisse**  
Einsteinstrasse 2  
CH-3003 Bern

**Swiss National Science Foundation (SNSF)**  
Wildhainweg 3  
PO Box  
CH-3001 Bern

# BRIDGE Steering Committee 2026



## Innosuisse

Toufann Chaudhuri (DLMS User Association | Engineering)

Bettina Ernst (Biotech Entrepreneur and Investor | Life Sciences)



## SNSF

**chair** Anna Lisa Martin-Niedecken (ZHdK | Design)

Matthias Stuber (Uni Lausanne, CHUV | Life Sciences)



## Advisory function

Dave Brown (Angel Investor and Mentor | ICT) (**chair EP PoC**)

Emine Cagin (Heidelberg Instruments | Engineering) (**chair EP Discovery**)

# Discovery Evaluation Panel 2026 (25 members)

## Life Sciences

<b>Giuseppe Perale</b>	USI, IBI SA
<b>Wolfgang Haap</b>	Roche
<b>Kaspar Binz</b>	Binz Biotech Consult.
<b>Diego Ghezzi</b>	Hôpital Jules-Gonin
<b>Roberto Speck</b>	USZ
<b>Irene Schiller</b>	Elionova
<b>Sylvain Dubey</b>	AgroSustain, UniLA
<b>Olivier Coquoz</b>	EBAMed
<b>Wilma Lukas</b>	W Life Sciences

## ICT

<b>Anne-Marie Kermarrec</b>	EPFL
<b>Stéphane Marchand-Maillet</b>	UniGE
<b>Helmut Grabner</b>	ZHAW
<b>Marco Zaffalon</b>	USI, Artificialy SA

## Engineering

<b><u>Emine Cagin</u></b>	Heidelberg Instruments Nano
<b>Stefan Salentinig</b>	UniFR
<b>Roberto Perez</b>	LTA, UniGE
<b>Gontran Pâques</b>	Hitachi Energy
<b>Andreas Hogg</b>	Coat-X
<b>Albert van den Berg</b>	University of Twente (NL)
<b>Stefano Baraldo</b>	SUPSI

## Energy

<b>Sarah Barber</b>	OST
---------------------	-----

## Environment

<b>David Bresch</b>	ETHZ
---------------------	------

## Social Sciences

<b>Christine Mohr</b>	UniLA
<b>Naomi Häfner</b>	UniSG
<b>Corinne Moser</b>	FHNW

# Discovery Evaluation Panel 2025

## Life Sciences

<b>Giuseppe Perale</b>	USI, IBI SA
<b>Wolfgang Haap</b>	Roche
<b>Kaspar Binz</b>	Binz Biotech Consult.
<b>André Mercanzini</b>	Aleva Neurotherapeutics
<b>Diego Ghezzi</b>	Hôpital Jules-Gonin
<b>Roberto Speck</b>	USZ
<b>Irene Schiller</b>	Elionova
<b>Sylvain Dubey</b>	AgroSustain, UniLA
<b>Olivier Coquoz</b>	EBAMed

## ICT

<b>Anne-Marie Kermarrec</b>	EPFL
<b>Stéphane Marchand-Maillet</b>	UniGE
<b>Helmut Grabner</b>	ZHAW
<b>Marco Zaffalon</b>	USI, Artificialy SA

## Engineering

<b>Emine Cagin</b>	Heidelberg Instruments Nano
<b>Stefan Salentinig</b>	UniFR
<b>Roberto Perez</b>	LTA, UniGE
<b>Gontran Pâques</b>	Hitachi Energy
<b>Sarah Dégallier Rochat</b>	BFH
<b>Andreas Hogg</b>	Coat-X
<b>Albert van den Berg</b>	University of Twente (NL)

## Energy

<b>Sarah Barber</b>	OST
---------------------	-----

## Environment

<b>David Bresch</b>	ETHZ
---------------------	------

## Social Sciences

<b>Christine Mohr</b>	UniLA
<b>Naomi Häfner</b>	UniSG
<b>Corinne Moser</b>	FHNW