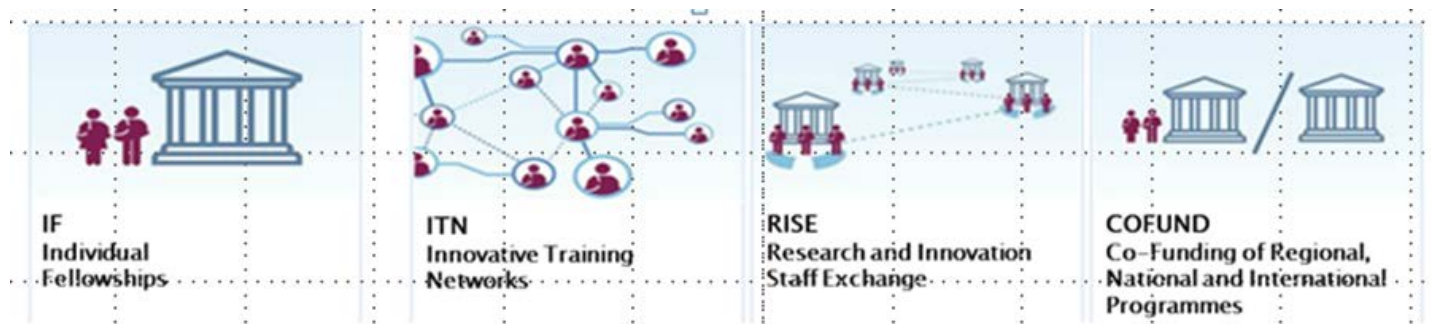


Horizon 2020

Marie Skłodowska-Curie Actions



Daniel Fuhrer, Research Services - Euresearch

Excellent Science (24.4 B €)

European Research
Council
(13.1 B €)

Future and Emerging
Technologies
(2.7 B €)

Marie Skłodowska-Curie
Actions
(6.1 B €)

Research Infrastructures
(2.5 B €)

Industrial Leadership (17 B €)

LEIT = Leadership in
enabling and industrial
technologies

- ICT
- Nano, new materials
- Biotechnology
- Space

(13.5 B €)

Access to Risk Finance
(2.9 B €)

Innovation in SMEs
(0.6 B €)

Societal Challenges (29.7 B €)

Health
(7.5 B €)

Food
(3.9 B €)

Energy
(6 B €)

Transport
(6.3 B €)

Climate
(3 B €)

Inclusive Societies
(1.3 B €)

Security
(1.7 B €)

Spreading Excellence (0.8 B €)

Science for Society (0.5 B €)

EIT (2.7 B €)

JRC (1.9 B €)

Euratom (1.6 B €)

Marie Skłodowska–Curie: A Mobile Researcher



“After all, science is essentially international, and it is only through lack of the historical sense that national qualities have been attributed to it.”

M. Curie

Marie Skłodowska Curie (1867–1934) moved from Poland to France in 1891. She was the **first woman to be awarded a Nobel Prize**, the only woman to be awarded in two **fields**, 1903 in Physics and 1911 in Chemistry.



UNIVERSITÉ
DE GENÈVE

MSCA – Funding throughout your research career

Research and Innovation Staff

« Experienced Researchers »

(in possession of a PhD or at least 4 years of research experience)

« Early Stage Researchers »

(no PhD and less than 4 years of research experience)



UNIVERSITÉ
DE GENÈVE

MSCA – Key Features

- Entirely **bottom-up**
- Open to all domains of **research and innovation**
- **(Physical) Mobility** as the key requirement
- Participation of **non-academic sector** strongly encouraged

Researchers:

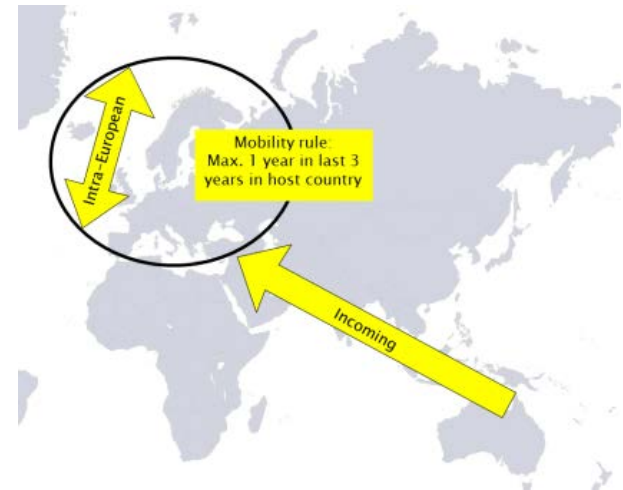
- Of any **nationality**
- **No age limit** for researchers
(but research experience)



UNIVERSITÉ
DE GENÈVE

MSCA – Mobility Rule

The researchers shall **not** have resided or carried out their main activity in the country of their future host organisation for **more than 12 months in the 3 years prior to the reference date** (i.e. the call deadline in the case of MSCA Individual Fellowships or recruitment by the host organisation in the case of MSCA Innovative Training Networks)



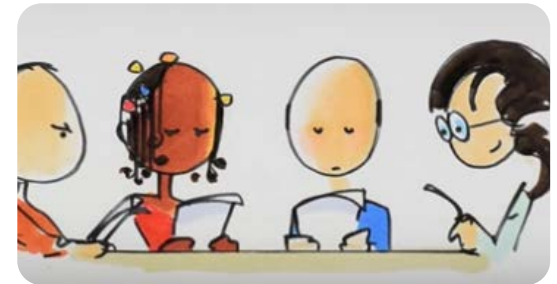
MSCA – Evaluation Criteria

- **Excellence (50%)**

Quality and novelty of the action; Appropriateness of the training / knowledge transfer; Capacity of the researcher to reach or re-enforce professional maturity / independence ...

- **Impact (30%)**

Quality of proposed exploitation / dissemination / communication measures ...



- **Implementation (20%)**

Coherence and effectiveness of the work plan / institutional environment / allocations of tasks and resources ...



UNIVERSITÉ
DE GENÈVE

MSCA – Overview

Individual Fellowships	IF	Support for Experienced Researchers undertaking international (and possibly intersectoral) mobility to acquire new skills through personal research projects
Individual-driven action		
Research and Innovation Staff Exchange	RISE	International and/or intersectoral exchanges of staff through a joint research project to develop sustainable collaboration and knowledge transfer
Co-funding of programmes	COFUND	Co-funding of regional, national and international programmes to foster excellence in researchers' training, mobility and career development
Innovative Training Networks	ITN	Training of Early Stage Researchers through international and interdisciplinary networks
Host-driven action		



MSCA IF – Main Features

- Support to **Experienced Researchers**
- Focus on **career** development
- 2 implementation modes: **European / Global Fellowships**
- Duration of projects: **≤ 2 years** (Global Fellowships: **≤ 3 years**)
- Option: Additional 3 or 6 month **secondment**, within Europe and in another sector

Who can apply? Experienced researchers (together with a supervisor in the proposed host institution)

Next call? [Opening Apr 2019; **Deadline Sep 2019**] TBC



**UNIVERSITÉ
DE GENÈVE**

MSCA IF – Implementation Modes

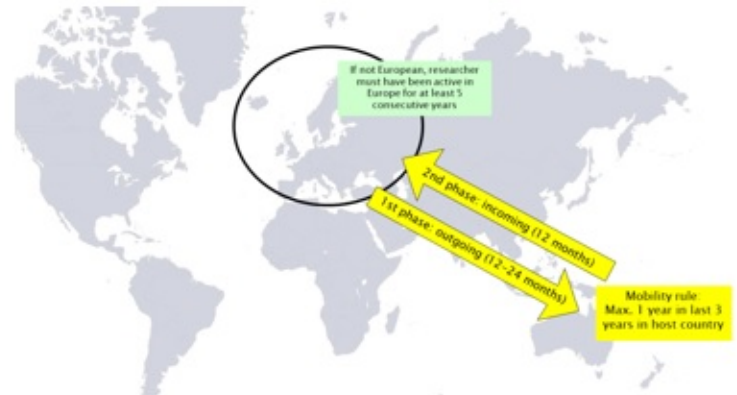
European fellowship (EF):



For fellows coming to
or moving within Europe
(12–24 months)

VS.

Global fellowship (GF):



For fellows from Europe
going to Third countries
(12–24 months) and
returning (12 months)



UNIVERSITÉ
DE GENÈVE

MSCA ITN – Main Features

- Training of **Early Stage Researchers** through individual research projects within the framework of the overall research topic
- Network-wide training activities include e.g. seminars, workshops and summer schools
- **Exchange of students and knowledge** within the network
- Funded projects have a duration of **4 years**; ESR can be recruited for **3–36 months**

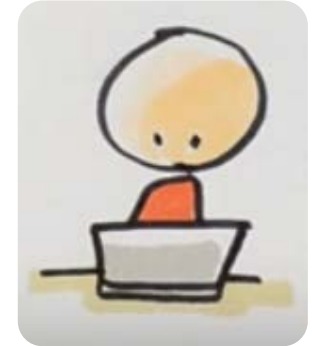
Who can apply? Networks of organisations (also from the private sector) training researchers at doctoral level

Next call? [Opening 13 Sep 2018; **Deadline 15 Jan 2019**]



**UNIVERSITÉ
DE GENÈVE**

Further information



European Commission R&I Participant Portal

<http://ec.europa.eu/research/participants/portal/desktop/en/home.html>

European Commission website on MSCA

<https://ec.europa.eu/programmes/horizon2020/en/h2020-section/marie-sklodowska-curie-actions>

MSCA Jobs

https://ec.europa.eu/research/mariecurieactions/apply/jobs_en

<http://ec.europa.eu/euraxess/index.cfm/jobs>

<https://www.euresearch.ch/en/career-funding>



**UNIVERSITÉ
DE GENÈVE**

Contact details

euresearch@unige.ch

*Thank you for
your attention!*



RESEARCH SERVICES



UNIVERSITÉ
DE GENÈVE