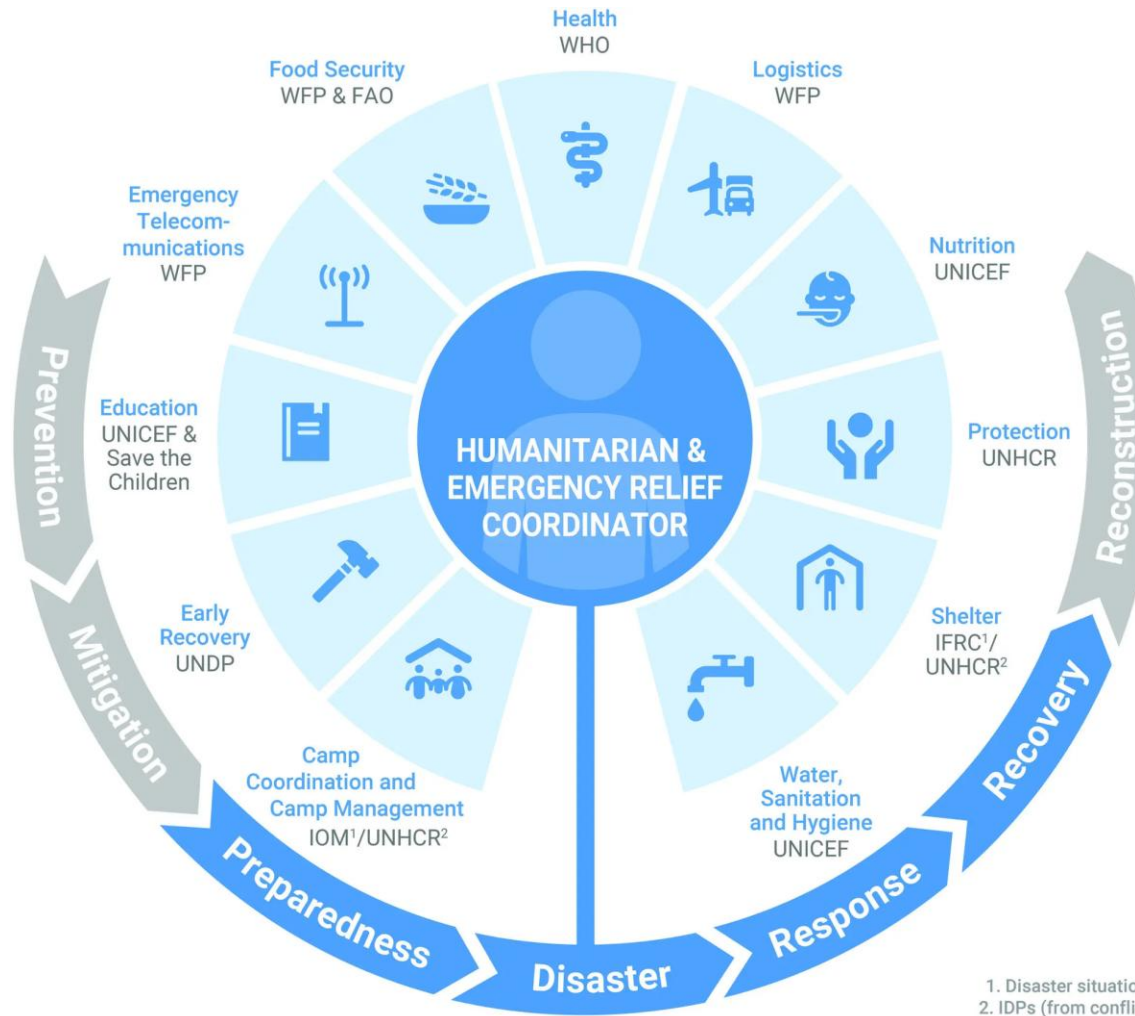


“It works! The early warning system works. Now if only we knew what to do when the siren goes off.”

What are responses?



AMINA



EARLY ACTION PROTOCOL SUMMARY

Ecuador | Volcanic Ash


26 September 2023




Context-specific photo and caption to be inserted here. Note: Photo should ideally capture RC action and show the emblem.

EAP №: EAP2023EC03	Early action lead time: 5 Days	Operation №: MDREC024
EAP approved: 29/09/2023	EAP timeframe: 5 Years	Operational timeframe: 2 Months

Budget: 460,521 CHF
To assist: 10,000 people

	Multi-purpose Cash	Female:	1000	128,439 CHF
		Male:	1500	AP Code: 081
Indicator:		# of people receiving cash assistance to cover their basic needs		
		# Households that have received help have improved their income.		
Prepositioning Activities:		<ol style="list-style-type: none">1. Strengthening the capacities of the NS (training for volunteers on CVA issues).2. Coordination with banking institutions (Multipurpose Cash (MPC) by bank codes).3. Development of community awareness and preparation actions in MPC.		
Priority Early Actions:		<ol style="list-style-type: none">1. Deployment of MPC equipment to intervened sectors for training of families benefiting from MPC.2. Registration and distribution of MPC to more vulnerable families. Around 500 families will receive 200 CHF each. The amount is based on the standard basket's case (final amount will be defined after the activation of the EAP).3. Evaluation of the intervention (MPC).		


PLANNED OPERATIONS

	Livelihoods	Female:	6000	135,598 CHF
		Male:	4000	AP Code: 007
Indicator:		# of families who have been provided with implements for the construction of temporary shelters to protect crops, food, and animals.		

9

	# of families have temporary shelters for their crops, food, and animals
Readiness Activities	<ol style="list-style-type: none"> 1. Strengthening the capacities of the NS (training for volunteers on issues related to Livelihoods) 2. Development of awareness and community preparedness actions in livelihoods.
Prepositioning Activities	<ol style="list-style-type: none"> 1. Acquisition of 2000 Livelihoods protection kits (1 plastic tarpaulin with measures of 4 x 6 m, 1 tool kit). 2. Pre-positioning of implements of the Livelihood protection kits (1 plastic tarpaulin with measures of 4 x 6 m, 1 tool kit) in the strategic warehouses. 3. Acquisition and preparation in the Provincial Boards of sensitization material on the proper use of the livelihood protection kit 4. Coordination, logistics and transport of Livelihoods protection kits
Priority Early Actions:	<ol style="list-style-type: none"> 1. Coordination, logistics and transport of Livelihoods protection kits to the intervened communities 2. Distribution of Livelihoods protection kits in intervened communities

AMINA

- 
- Contact your local Red Cross or Red Crescent National Society, say Jonathan Stone (IFRC) sent you and engage with EW4All at country level
 - Read about our DREF Early Action Protocols (esp for volcanic hazards)
 - Think about how you can support early or anticipatory action
 - Find poster outside to contribute to warning messages