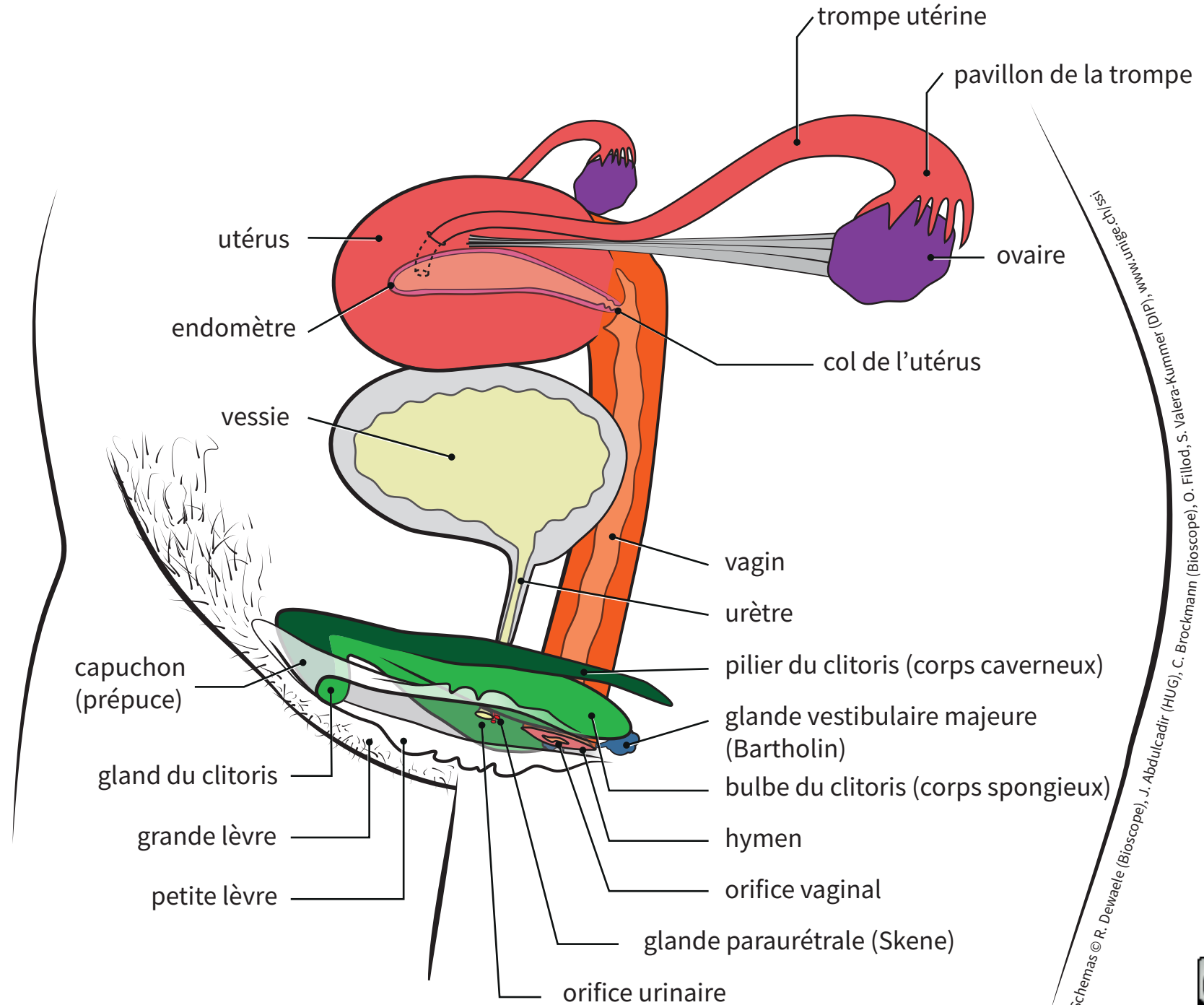


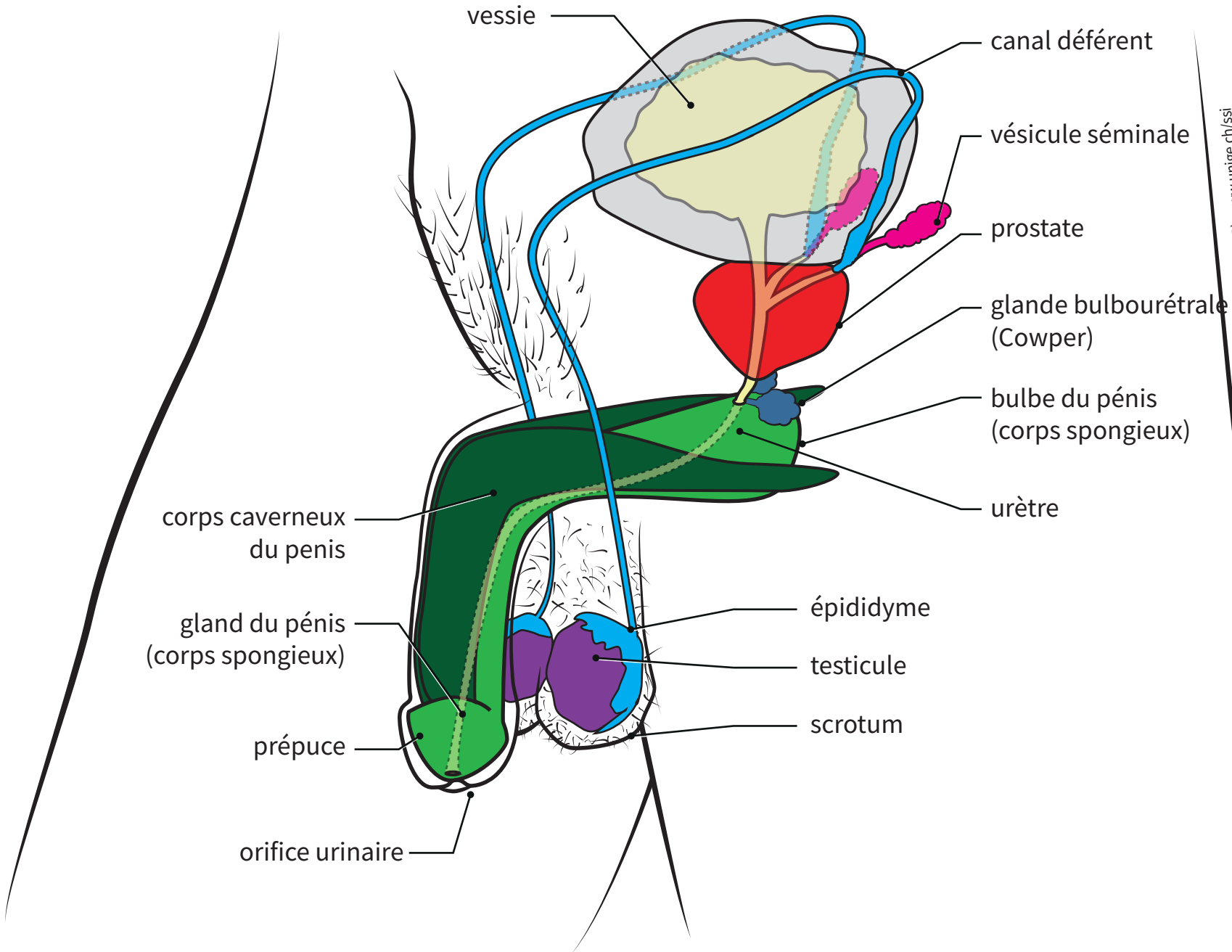
Appareil génital femelle



Schemas © R. Dewaele (Bioscope), J. Abdulkadir (HUG), C. Brockmann (Bioscope), O. Fillod, S. Valera-Kunum-Kunum (CID) (DID) - www.unige.ch/isi



Appareil génital mâle



Schemas © R. Dewaele (Bioscope), J. Abdulkadir (HUG), C. Brockmann (Bioscope), O. Fillod, S. Valera-Kummer (DIP), www.unige.ch/ssi

