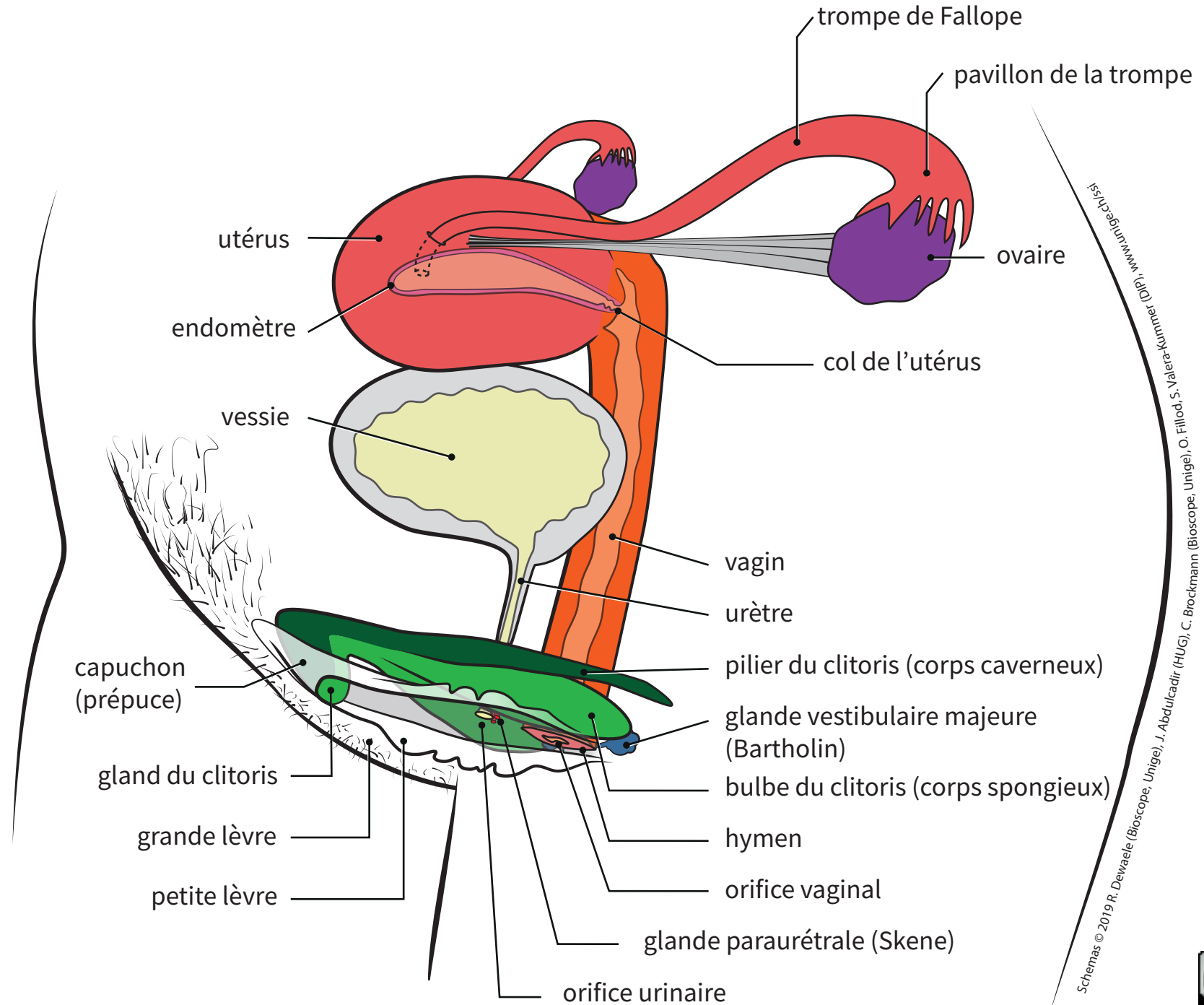
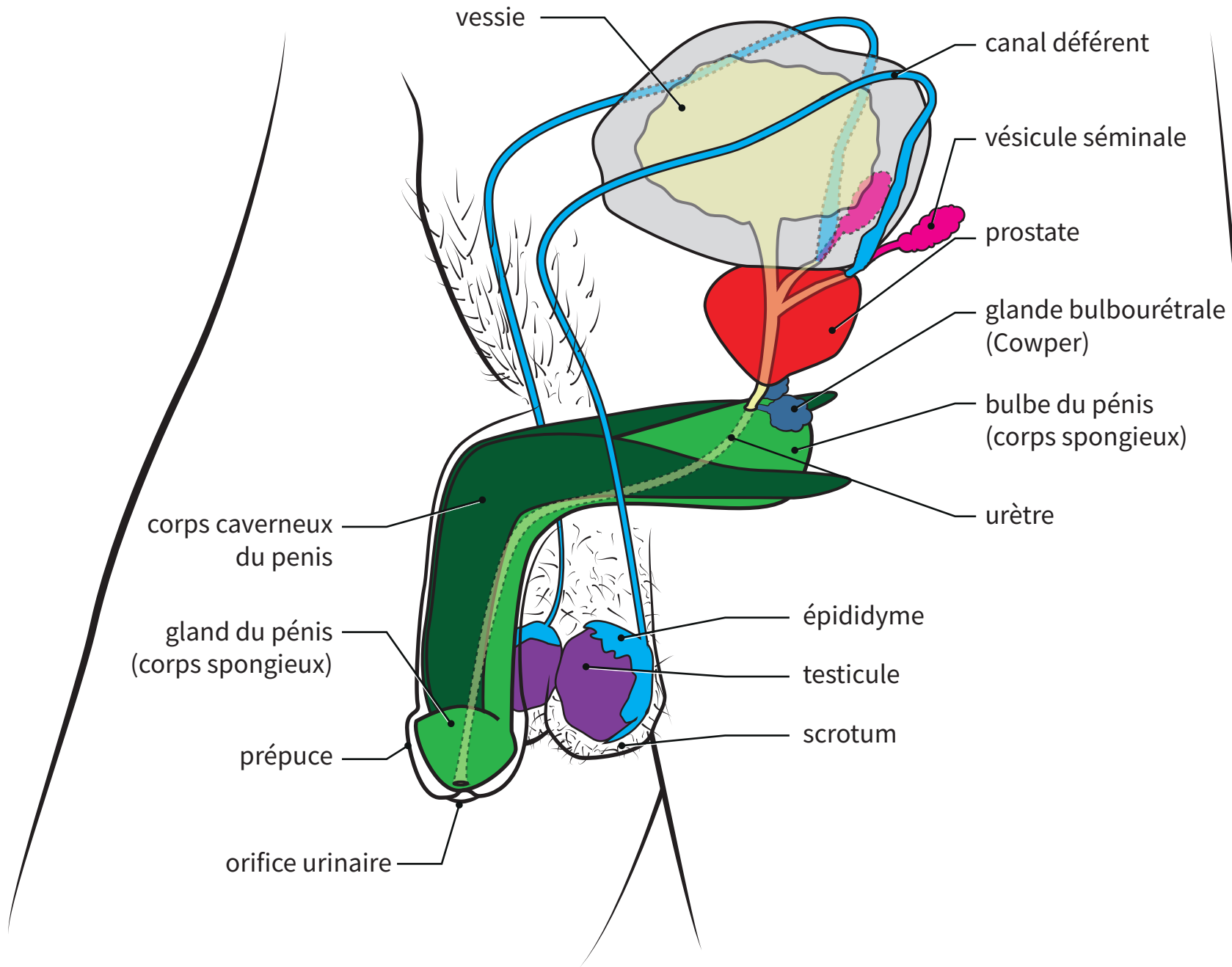


# Appareil reproducteur femelle



Schemas © 2019 R. Dewaele (Bioscope, Unige), J. Abdulkadir (HUG), C. Brockmann (Bioscope, Unige), O. Fillod, S. Valera-Kunmer (JGU), www.unige.ch/ssi

# Appareil reproducteur mâle



Schemas © 2019 R. Dewaele (Bioscope, Unige), J. Abdulcadir (HUG), C. Brockmann (Bioscope, Unige), O. Fillod, S. Valera-Kummer (DIP), www.unige.ch/ssi