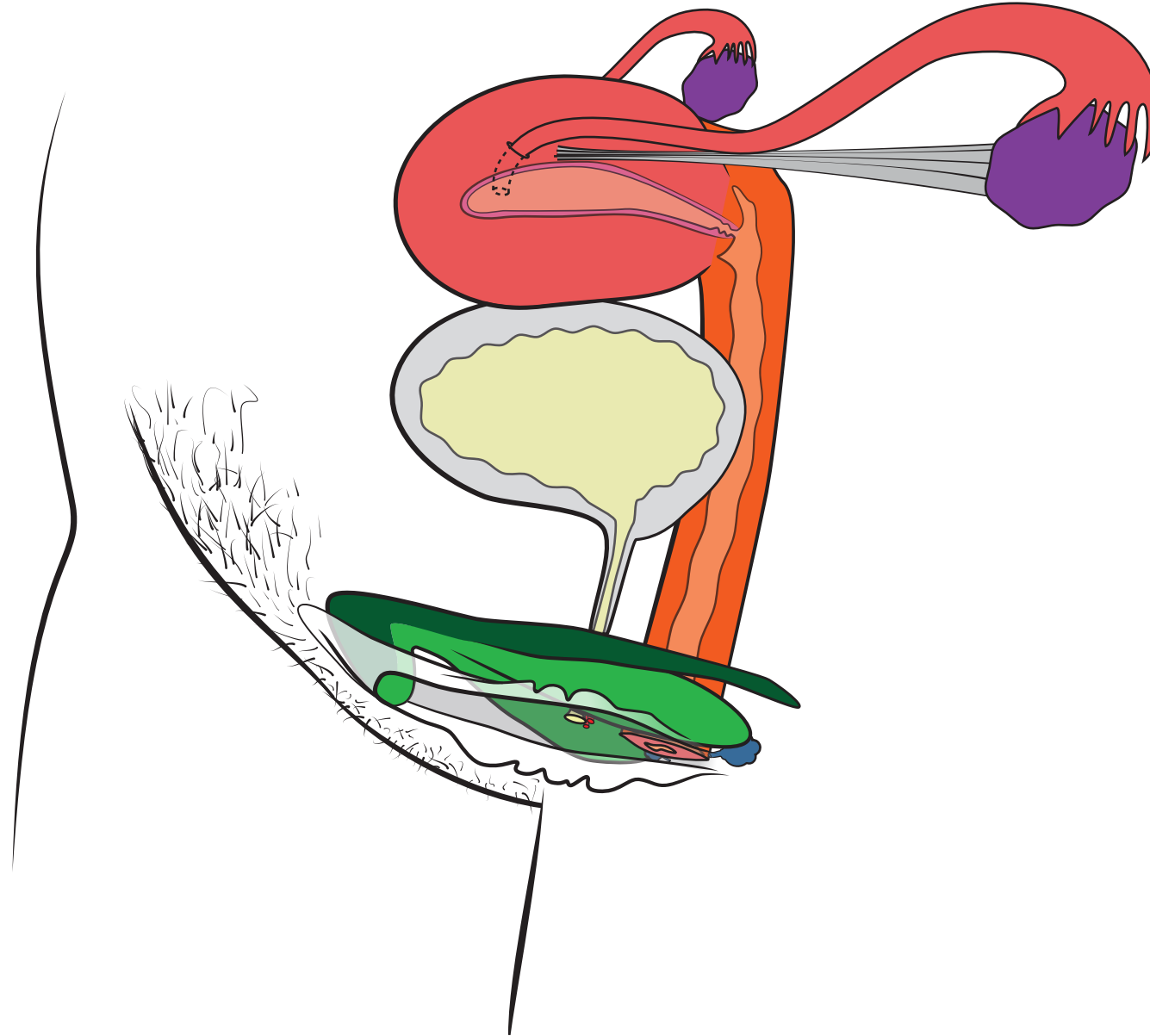


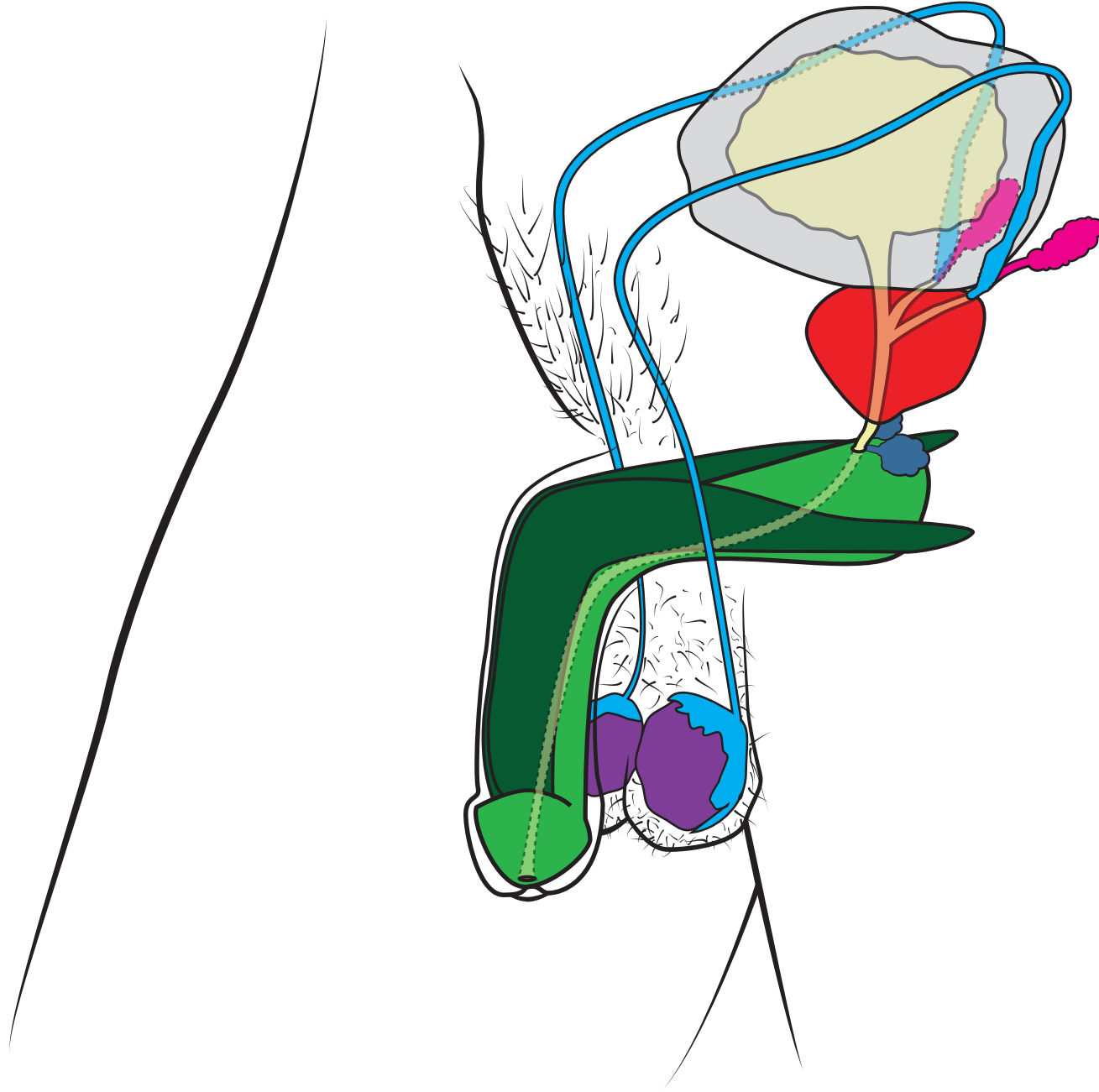
# Appareil génital femelle



Schemas © R. Dewaele (Bioscope), J. Abdulkadir (HUG), C. Brockmann (Bioscope), O. Fillod, S. Valera-Krumm (Bioscope), [www.unige.ch/isi](http://www.unige.ch/isi)



# Appareil génital mâle



Schemas © R. Dewaele (Bioscope), J. Abdulkadir (HUG), C. Brockmann (Bioscope), O. Fillod, S. Valera-Kummer (DIP), [www.unige.ch/ssi](http://www.unige.ch/ssi)

