



Introduction to SWISSUbase

The Consortium, Platform &
Services

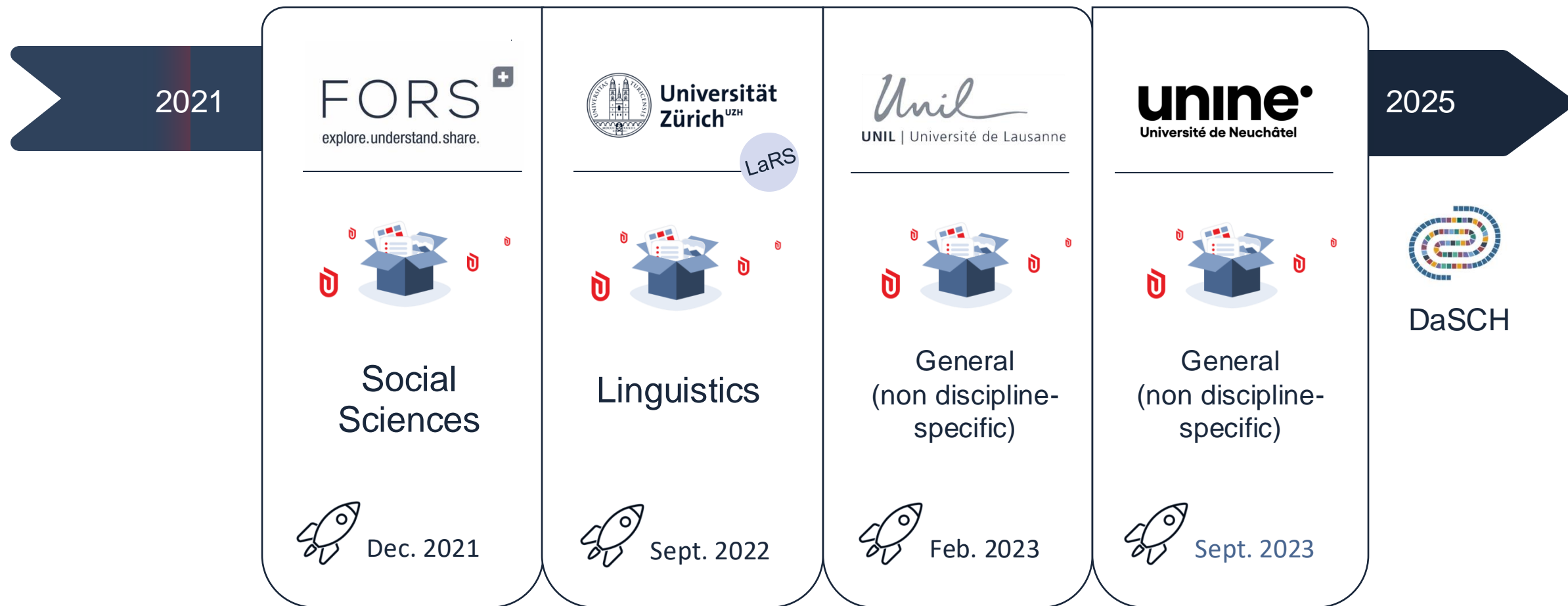
Our mission

To serve the Swiss scientific community to share and preserve research data for future reuse.

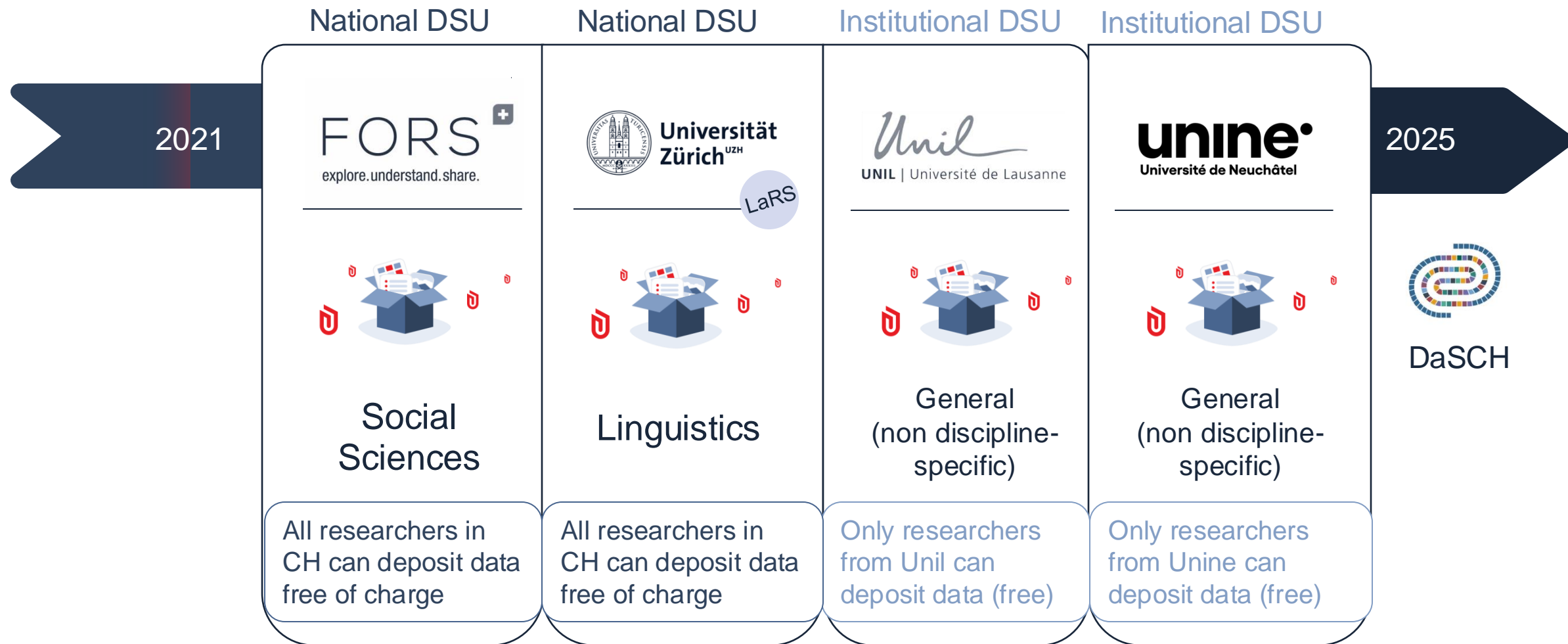


SHARE. PRESERVE.

A Consortium built among Partners



A Consortium built among Partners



What is SWISSUbase?



> **Online Platform** – Multidisciplinary platform for the sharing and preserving of Swiss research data, with tailored metadata for:

→ Long-term preservation, access and reuse.



> **Data Services** – Data curation, support and consultation services direct to researchers and other data professionals.

General situation of data handling



- > Data stored and eventually lost on personal computers
- > No broader knowledge/visibility of the data collected
- > No valorization of the researchers' data processing efforts
- > Data is insufficiently structured and labelled/described
- > Difficulty to share the data internally and/or externally
- > No reuse of the huge amount of data collected

Benefits of SWISSUbase

- > General and discipline-specific metadata (EN, FR, DE, IT)
- > Multilingual user interface (EN, FR, DE)
- > Data curation by archiving experts
- > Personal support & consultation services
- > Data hosted on Swiss servers (SWITCH)
- > Free for researchers (!)



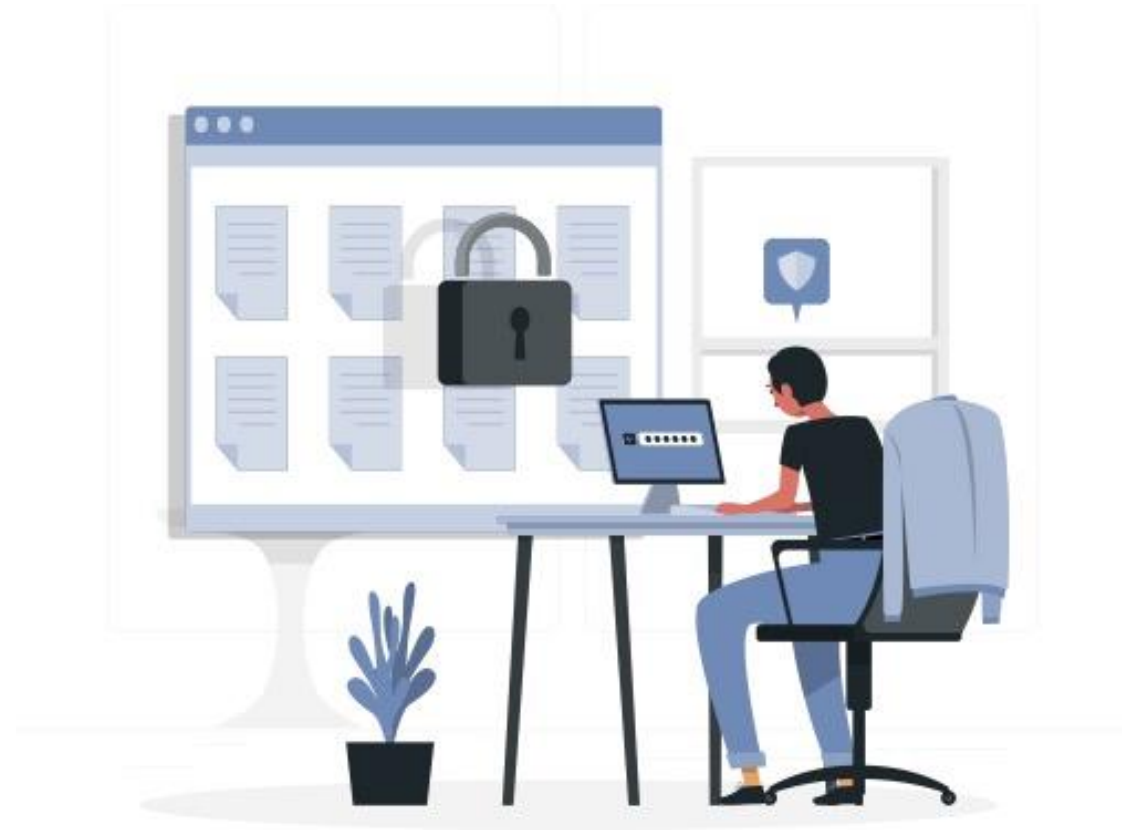
Current Data Access Governance

Access levels

- > Open
- > Restricted
 - > Switch and CLARIN authentication services

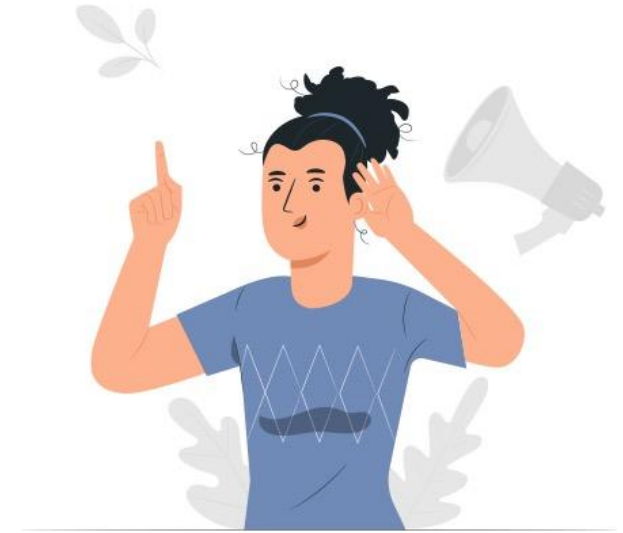
Usage Licenses (dataset level)

- > Open: Creative Commons licenses
- > Restricted
 - > Usage (Teaching, Research, both)
 - > Prior approval by the author
- > Usage license choice assessed by data curators

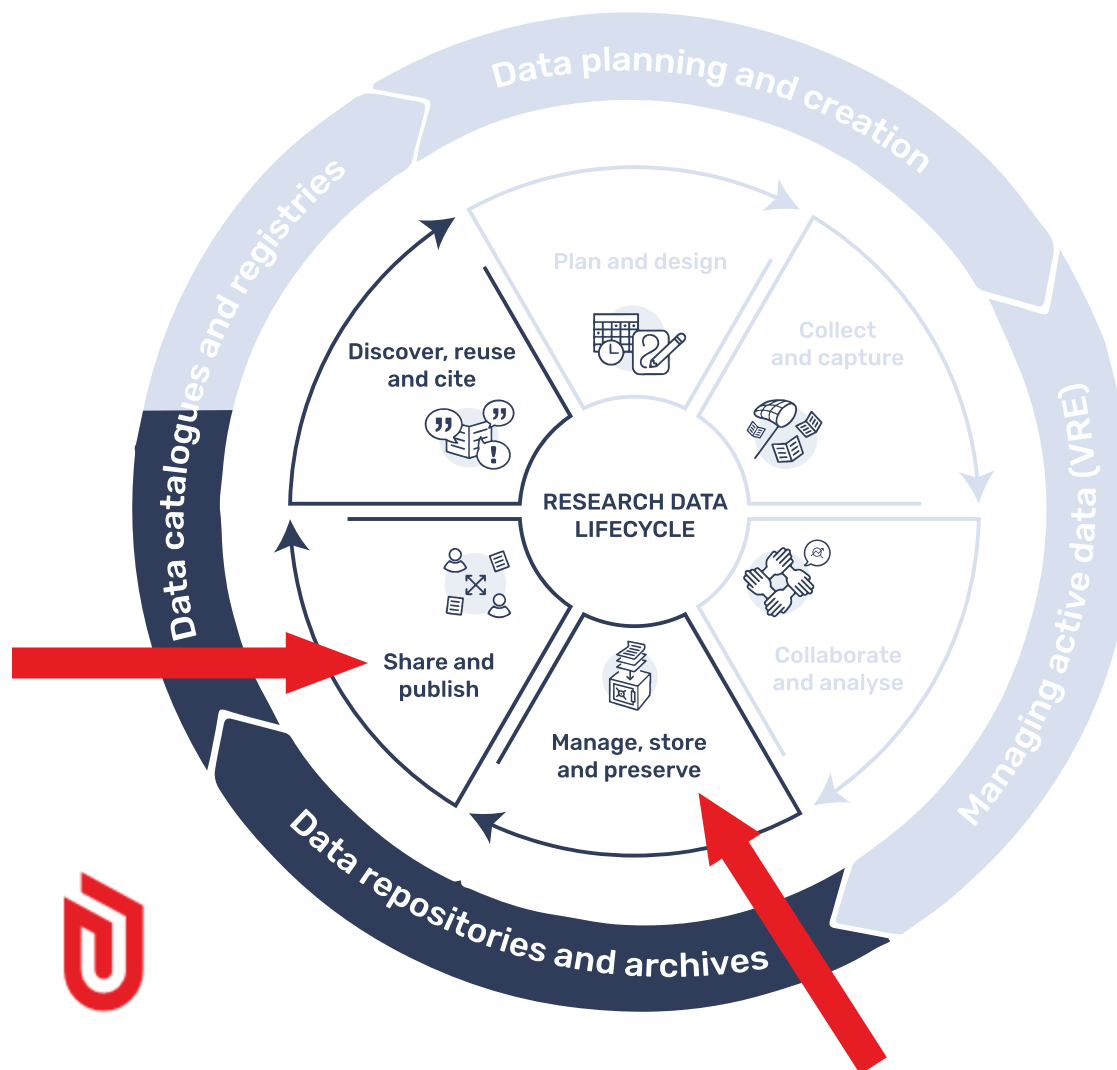


What SWISSUbase is NOT

- >No «deposit and forget» data repository
- >No Virtual Research Environment
- >No Live Archive with living data

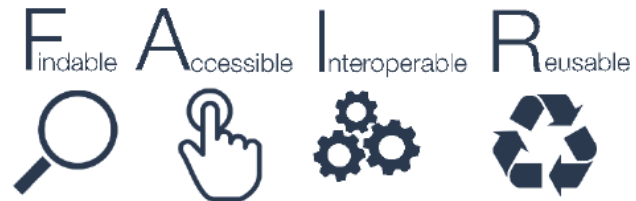


Data deposit at the end of the research life cycle



Compliance with International Standards

Data



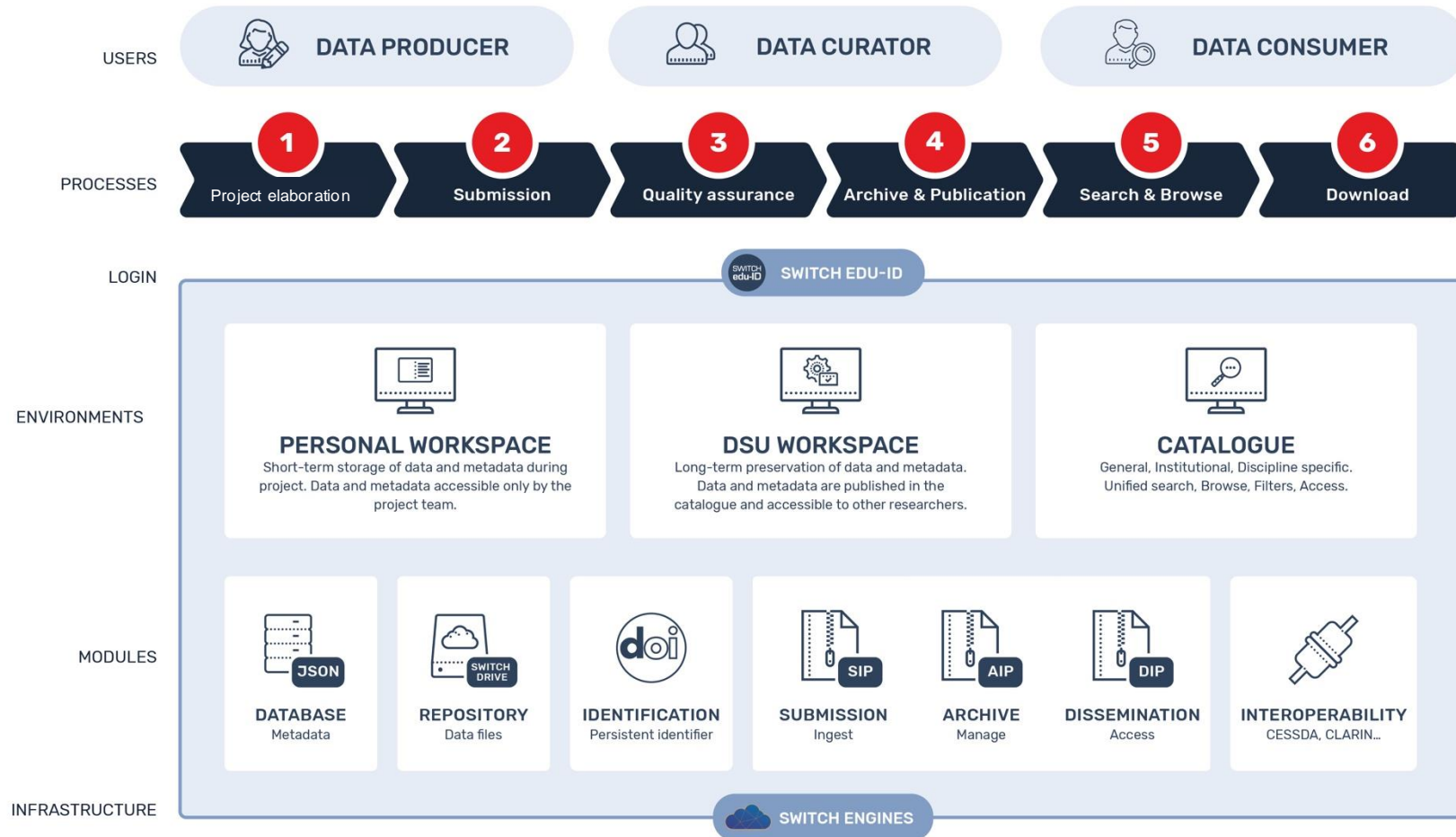
Metadata



Long-term Preservation



The Platform: Three User Groups in the Platform

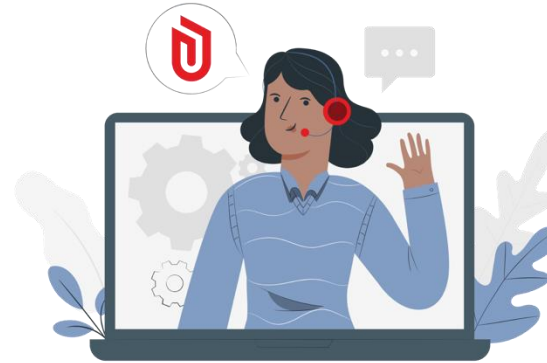


What makes SWISSUbase unique?

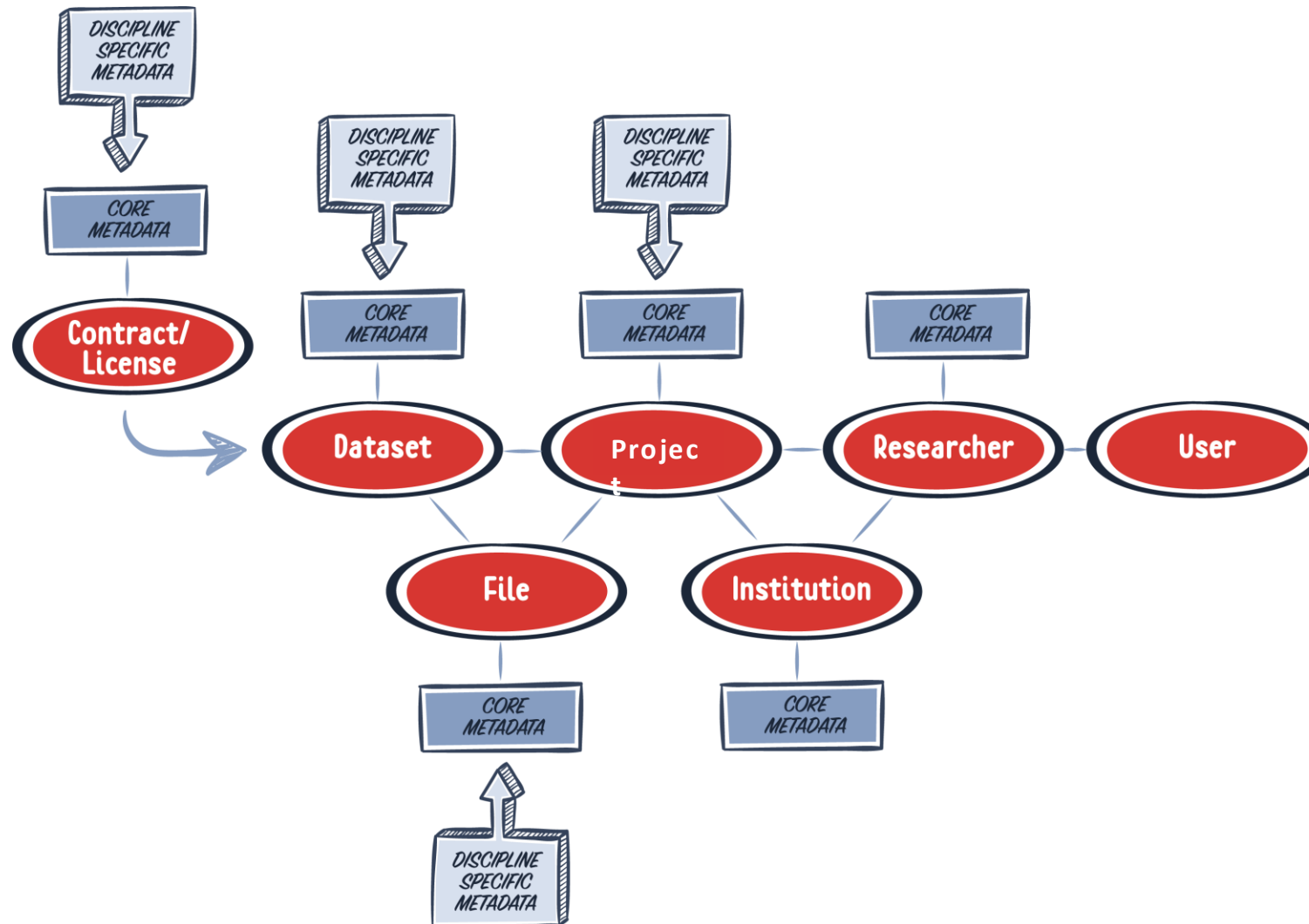
> Rich metadata



> Services and expertise



Rich metadata

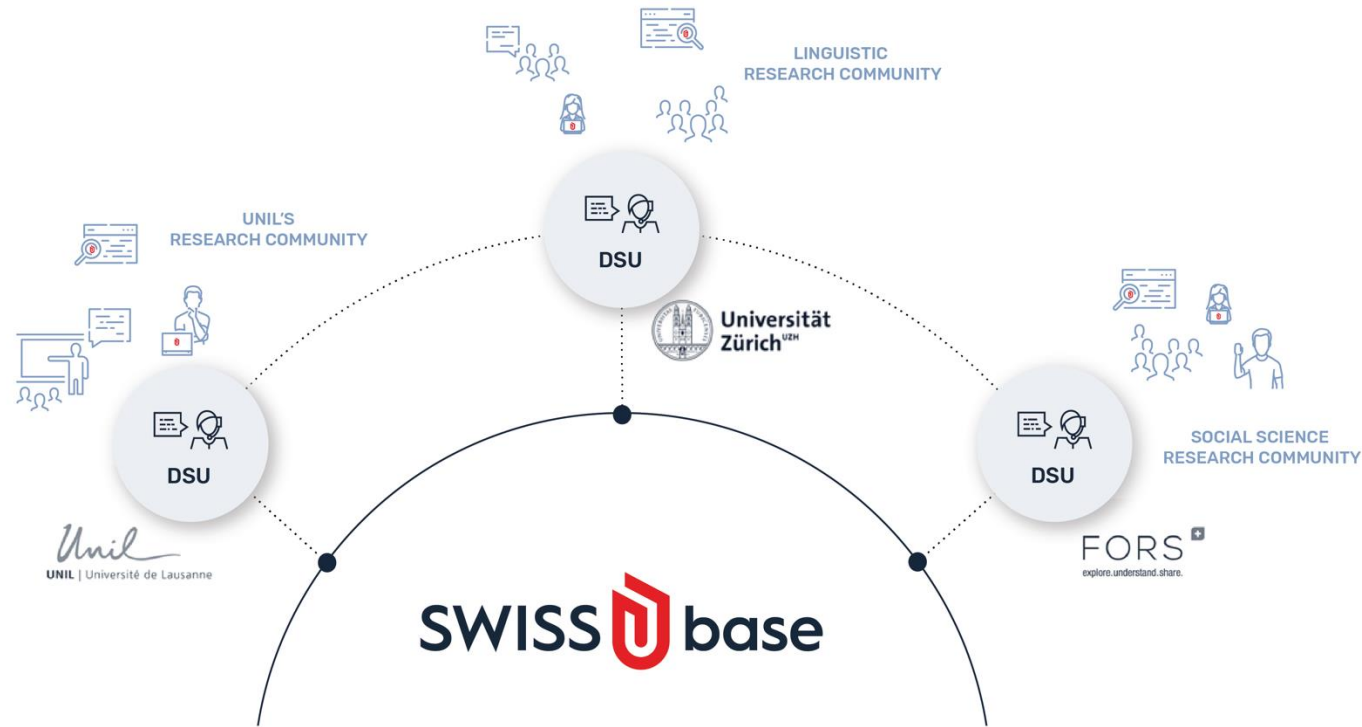


DataCite

DDI

METASHARE

SWISSUbase: A Network of Services



SWISSUbase: Coordination of Services

- > Services provided by SWISSUbase teams to Data Service Units
- > Services provided by Data Service Units to Researchers

SWISSUbase Teams

SWISSUbase Management Team



Bojana Tasic
Head of INDEV Unit – FORS



Stefan Buerli
Head of DTS group – FORS



Jennifer Dean
Project Manager – FORS

SWISSUbase Central Team (IT & Services)



Jonas Boiziau
Webmaster – FORS



Valentin Carpov
Senior Software Developer – FORS



Aurélie Debrot
Software Developer – FORS



Roberto Genesi
Software Developer – FORS



Guillaume Lefebvre
Senior Software Developer – FORS



Nuno Ribeiro da Costa
Software Developer – FORS



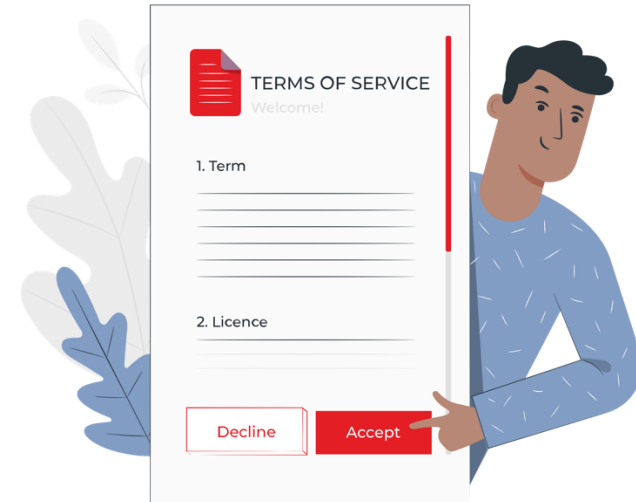
David León González
Junior Software Developer – FORS



Penelope Weissman
Research Data Specialist – FORS

Services

- > Services and expertise based on 25+ years of experience in sharing and archiving research data
 - > Guides
 - > Trainings
 - > Helpline
 - > Policy Support
- > Community-building and knowledge sharing



Data Service Units

Data Service Unit members



Christina Bornatici
Data Service Expert – FORS



Eliane Ferrez
Data Service Expert – FORS



Marieke Heers
Operational Lead – FORS



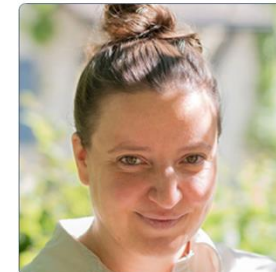
Meret Hildebrandt
Data Service Expert – FORS



Nobutake Kamiya
Data Curator – Language Repository of
Switzerland (UZH)



Urs Muller
Data Curator – Language Repository of
Switzerland (UZH)



Stefanie Strebel
Management & Communication –
Language Repository of Switzerland
(UZH)



Quentin Gallis
Data Steward & Data Curator –
University of Neuchâtel



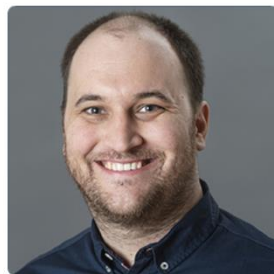
Marielle Kappeler
Data Service Expert – FORS



Vildane Bilali
Data Curator – Language Repository of
Switzerland (UZH)



Yannick Faillard
Data curator – Language Repository of
Switzerland (UZH)



Christian Futter
Operational Lead – Language
Repository of Switzerland (UZH)



Carmen Jambé
Operational Lead – University of
Lausanne



Magalie Vetter
Data Curator – University of Lausanne

Data Service Units

Data service units at partner institutions:

- > Support for researchers
 - > Data depositors: Data preparation and deposit
 - > Data consumers: Finding and reusing data
 - > Data Stewards
- > Data curation and archiving
- > Institutional or discipline-specific (national), depending on the structure



Data Service Units

Structure of Data service units

SWISSUbase Partner	Discipline/Institution	DSU Type	Research Community	DSU-Specific Information
DaSCH – Swiss National Data and Service Center for the Humanities	Humanities	Disciplinary (National)	All humanities researchers in Swiss Higher Education Institutions	<u>DaSCH</u>
FORS – Swiss Centre of Expertise in the Social Sciences	Social Sciences	Disciplinary (National)	All social sciences researchers in Swiss Higher Education Institutions	<u>FORS Data Services</u>
University of Zurich (UZH) / Language Repository of Switzerland (LaRS)	Linguistics	Disciplinary (National)	All linguistics researchers in Swiss Higher Education Institutions	<u>LaRS Data Services</u>
University of Lausanne (UNIL)	University of Lausanne	Institutional (Cross-disciplinary)	Researchers from all UNIL faculties	<u>UNIL Open Science Services</u>
University of Neuchâtel (UNINE)	University of Neuchâtel	Institutional (Cross-disciplinary)	Researchers from all UNINE faculties	<u>UNINE Data Services</u>

Network of Data Service Units



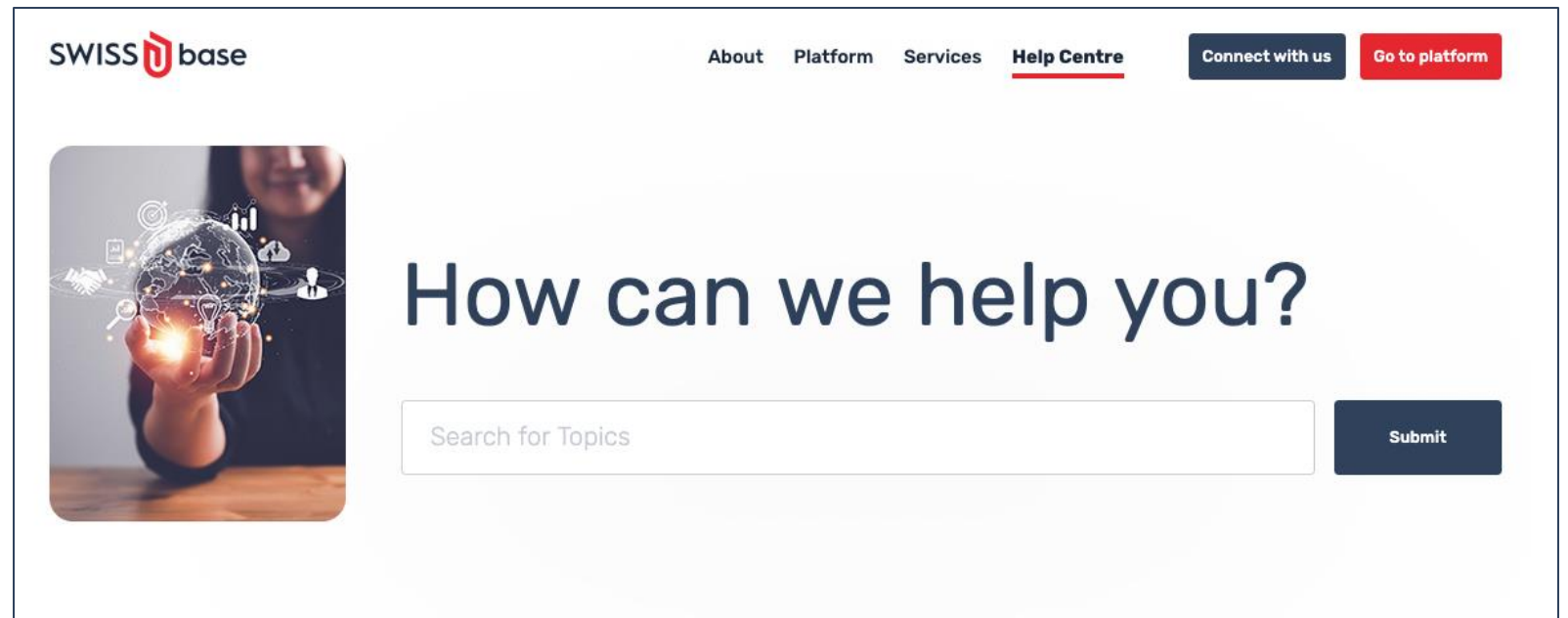
- > FORS Data Service: Social sciences – all CH
- > LaRS (Language Repository of Switzerland): Linguistics – all CH
- > UNIL Data Service: Across 7 UNIL faculties
- > UNINE Data Service: Across 4 UNINE faculties
- > DaSCH: Humanities – all CH (to come in 2025)

Need help? Get Support.

Visit our [Help Centre](#) for more information

> ... discover our [User Guide](#)

> ... read our [FAQs](#)



SWISSUbase:

A platform for sharing and preserving Swiss research data.



Share, find & access
research data:
[swissubase.ch](https://www.swissubase.ch)

Discover our mission, services
& how we can support you:
info.swissubase.ch

Contact Us:
contact@swissubase.ch

Thank you!

Penelope Weissman, Research Data
Specialist
Penelope.Weissman@fors.unil.ch

Stefan Buerli, Project Leader
Stefan.buerli@fors.unil.ch

Jennifer Dean, Project Manager
Jennifer.dean@fors.unil.ch

Bojana Tasic, Technical Leader
Bojana.tasic@fors.unil.ch



www.swissubase.ch

CREDITS: This presentation template was created including Feather icons, infographics & images by Freepik, illustrations by Stories, presentation templates by PresentationGo and freeicons.io

